

DECEMBER  
2006

OFFICE OF INSTITUTIONAL RESEARCH  

---

FISK UNIVERSITY

# The Fact Book 2006-2007

**Fisk University**  
**Nashville, TN 37208-3051**

<b>INTRODUCTION</b> .....	<b>3</b>
<b>QUICK FACTS</b> .....	<b>4</b>
<b>A STATEMENT OF PURPOSE</b> .....	<b>5</b>
<b>BOARD OF TRUSTEES</b> .....	<b>6</b>
<b>HIGHLIGHTS OF FISK’S HISTORY</b> .....	<b>7</b>
<b>PRESIDENTS OF FISK UNIVERSITY</b> .....	<b>9</b>
<b>ACADEMIC CALENDAR</b> .....	<b>11</b>
<b>STUDENT AND ACADEMIC PROGRAM PROFILE</b> .....	<b>12</b>
<b>QUICK FACTS</b> .....	<b>13</b>
<b>ADMISSIONS</b> .....	<b>14</b>
<b>FINANCIAL AID</b> .....	<b>19</b>
<b>ENROLLMENT</b> .....	<b>21</b>
<b>MAJOR PROGRAMS</b> .....	<b>25</b>
<b>CREDIT HOURS</b> .....	<b>26</b>
<b>CLASS SIZE</b> .....	<b>30</b>
<b>ACADEMIC ACHIEVEMENT</b> .....	<b>31</b>
<b>DISTRIBUTION OF GRADES</b> .....	<b>33</b>
<b>DEGREES CONFERRED</b> .....	<b>34</b>
<b>RETENTION AND GRADUATION RATES</b> .....	<b>39</b>
<b>FACULTY/STAFF PROFILES</b> .....	<b>40</b>
<b>QUICK FACTS</b> .....	<b>41</b>
<b>FISK UNIVERSITY INSTRUCTIONAL FACULTY</b> .....	<b>42</b>
<b>RESEARCH FACULTY AND STAFF</b> .....	<b>46</b>
<b>FACULTY STATISTICS</b> .....	<b>47</b>
<b>GENERAL INFORMATION</b> .....	<b>55</b>
<b>Housing</b> .....	<b>59</b>
<b>HOUSING</b> .....	<b>59</b>
<b>STUDENT AFFAIRS</b> .....	<b>61</b>
<b>INSTITUTIONAL ADVANCEMENT</b> .....	<b>64</b>
<b>ALUMNI</b> .....	<b>65</b>
<b>FINANCES</b> .....	<b>67</b>
<b>HIGHLIGHTS OF FY 2004</b> .....	<b>68</b>

**FINANCIAL PROFILE ..... 68**  
**CURRENT FUND REVENUES, EXPENDITURES AND BALANCES ..... 69**  
**CURRENT FUND REVENUES ..... 71**  
**EDUCATION AND GENERAL REVENUES ..... 72**  
**CURRENT FUND EXPENDITURES ..... 73**  
**PERCENT DISTRIBUTION OF ..... 74**  
**EDUCATION AND GENERAL EXPENDITURES ..... 74**  
**STATEMENTS OF CURRENT FUNDS, REVENUES, ..... 75**  
**EXPENDITURES, AND OTHER CHANGES ..... 75**

---

## **INTRODUCTION**

The Fisk University Fact Book is an annual compilation of academic and financial statistical data about the university. It provides a snapshot of our operations that can be used to evaluate institutional effectiveness. The academic data is concentrated on the fall semester of the year, since this is the semester of record for most external reports. Certain functions, such as graduation and financial reporting, lend themselves to being expressed for the entire academic and fiscal years and are so reported

---

## **QUICK FACTS**

### **Fisk College and Normal School**

- The Fisk College and Normal School opened for classes January 9, 1866.
- 

### **Fisk University**

- Fisk School was incorporated as Fisk University August 12, 1867.
  - The original Fisk Jubilee Singers departed Nashville October 6, 1871, to raise money for the University.
  - Jubilee Hall was formally dedicated in 1876, becoming the first permanent structure built in America for educating African Americans.
  - In 1930, Fisk became the first historically black college to gain accreditation by the Southern Association of Colleges and Schools.
  - Professional Accreditations:
    - 1. American Chemical Society
      2. National Association of Schools of Music
      3. Council of Graduate Schools
      4. International Assembly for Collegiate Business Education
  - Fisk University's Academic Calendar is based on the semester system.
  - Degrees offered are:
    - Bachelor of Arts
    - Bachelor of Music
    - Bachelor of Science
    - Master of Arts
- 

## **Fisk University Rankings**

U.S. News and World Report in its 2006 Edition of "America's Best Colleges" ranks Fisk University among the Tier 3 National Liberal Arts Colleges. The National Science Foundation ranks Fisk University as one of the highest per capita producers in the nation for the number of its African American Baccalaureates who go on to earn the Doctorate in the Natural Sciences. For the eighth consecutive year, Fisk is included in the Princeton Review "Top 361 Colleges and Universities." Newsweek Magazine also featured Fisk in its annual list of the "Hottest 25 Colleges and Universities".

## **A STATEMENT OF PURPOSE**

Since its founding in 1866, Fisk has committed itself to providing an excellent liberal arts education for students irrespective of race, gender, and religion. While from its earliest days the university has exhibited a concern for the needs and problems of black Americans, it has always been an academic haven to all citizens of America and the world. Indeed, of the eight members of the first graduating class, two were white and five were women. Fisk University's traditional mission of leadership development and support for pioneering research is conducted in an atmosphere of respect for ethnic diversity.

As the twenty-first century begins, opportunities for leaders from all ethnic segments of America are increasing. The cultural landscape of our world demands leaders who possess the skill, knowledge, vision and values that enable them to work effectively with others. Historically black institutions are among the best examples of colleges and universities that preserve cultural heritage, offer academic excellence and present leadership opportunities to black students and other ethnic groups.

## **THE MISSION**

Fisk University provides a rich academic experience steeped in the liberal arts tradition. Our faculty and students exhibit a passion for learning and personal growth. We are committed to ethical leadership and engagement in our local and global communities.

## BOARD OF TRUSTEES

**Table 1.1 Members of the Board of Trustees (2006-07 Academic Year)**

<b>Member</b>	<b>Resident City</b>
Mrs. Carolyn J. Booker	Atlanta, GA
Mrs. Barbara L. Bowles (student representative)	Chicago, IL Nashville, TN
Mrs. Alma Arrington Brown	Bethesda, MD
Mrs. Carolyn Hogan Byrd	Atlanta, GA
Mr. Anthony R. Chase	Houston, TX
Mr. Mike Curb	Nashville, TN
Dr. John Hope Franklin (Emeritus)	Durham, NC
Mr. Reynaldo P. Glover	Chicago, IL
Mr. Ernest G. Green	Washington, DC
Mrs. Ann B. Holliday	Wilmington, DE
Dr. Adrienne Lash Jones	Shaker Heights, OH
Mr. Gregory M. Makowski	Totowa, NJ
Mr. Robert L. Mallett	New York, NY
Mrs. Leatrice B. Mckissack	Nashville, TN
Dr. Joan Thompson Mobley, M.D.	Wilmington, DE
Mr. Robert W. Norton	Savannah, GA
Mrs. Hazel R. O'Leary	Nashville, TN
Dr. Sheila Peters (faculty representative)	Nashville, TN
Mrs. Donna Daniels Rice	Columbia, MD
Mr. Michael D. Shmerling	Nashville, TN
Mr. Irby C. Simkins, Jr	Nashville, TN
Dr. Robert Troutt	Memphis, TN
Mr. Cal Turner	Nashville, TN
Mr. Samuel L. Williams, Jr.	Adelphi, MD
Dr. Robert Wingfield (faculty representative)	Nashville, TN

## HIGHLIGHTS OF FISK'S HISTORY

Table 1.2 Selected Events from Fisk's History

Year	Event
1865	John Ogden, the Reverend Erastus Milo Cravath, and the Reverend Edward P. Smith established the Fisk School in Nashville.
1866	On January 9, Fisk convened its first classes.
1867	On August 12, Fisk School was incorporated as Fisk University.
1871	On October 6, the original Jubilee Singers departed Fisk to raise money.
1873	January 1, groundbreaking ceremony held for Jubilee Hall.
1875	Reverend E. M. Cravath became the first President of Fisk University. Fisk graduated its first class consisting of eight students that included two women and two whites.
1876	Jubilee Hall was formally dedicated.
1878	Fisk's first Missionaries, Albert P. Miller and Andrew E. Jackson, graduated. Upon leaving the Mendi Mission, Miller in a short address left Fisk its motto: "Her Sons and Daughters Are Ever On The Alter."
1880	The Mozart Society, the first Musical Organization in Tennessee, was formed. In later years, the Society becomes the Fisk University Choir.
1882	Livingston Hall was erected through a \$60,000 gift by Mrs. Valerie Stone.
1883	The Fisk Herald began.
1884	The Fisk Alumni Association was founded.
1885	The Music Department was created.
1888	W.E.B. DuBois graduated.
1889	The Gymnasium and workshop (presently Van Vechten Art Gallery) was created.
1891	Bennett Hall, named from the Reverend H.S. Bennett, was elected at the cost of \$25,000.
1892	Fisk Memorial Chapel was built with a legacy of \$25,000 from the estate of Clinton B. Fisk.
1893	First Football Team was organized.
1901	James G. Merrill became the second President of Fisk, in June.
1906	Chase Hall (Science Building) was erected on the site where the statue of W.E.B. DuBois now stands.
1908	The Carnegie Library (now the Academic Building) was erected.
1909	George A. Gates was elected third President of Fisk.
1915	Fayette A. McKenzie became the fourth President of Fisk.
1925	Fisk students strike against the Administration policies of President McKenzie on February 4.
1926	Thomas E. Jones was selected the fifth President of Fisk.
1927	The Fisk News was established as an Alumni Publication; Fisk celebrated its first Homecoming.
1930	Fisk became the first Historically Black College to gain accreditation by the Southern Association of Colleges and Schools.



**Table 1.2 Selected Events from Fisk's History - Continued**

<b>Year</b>	<b>Event</b>
1931	James Weldon Johnson was appointed to the Adam K. Spence Chair in Creative Writing.
1945	Effective July 1946, President Jones resigns.
1946	Charles S. Johnson was appointed the sixth and first black President of Fisk.
1948	The Fisk Forum, the student newspaper, was established.
1949	Georgia O'Keefe presented Fisk with the Alfred Stieglitz collection of Modern Art.
1952	Fisk became the first black college to be granted a charter to establish a chapter of the Phi Beta Kappa Honor Society.
1956	Charles S. Johnson dies, October 28.
1957	Stephen J. Wright was elected the seventh President of Fisk.
1960	The Nashville sit-in movement was organized by John Lewis, '67.
1966	Fisk held her Centennial Celebration.
1967	James R. Lawson was selected the eighth President of Fisk.
1969	The Modern Black Mass Choir was organized.
1972	Fisk attained an enrollment of 1559, the largest in the college's history.
1975	James Lawson resigned as President.
1977	Walter J. Leonard became the ninth President of Fisk.
1978	Fisk's entire campus was officially designated an historical district by the U.S. Department of Interior.
1980	The name, Jubilee Singers, became a registered trademark.
1981	The Jubilee Singers Memorial Bridge opened.
1984	Walter Leonard resigned as President of Fisk; Henry Ponder became the tenth President.
1988	Cecilia N. Adkins, '43, became the first woman elected chair of the Fisk University Board of Trustees.
1990	Fisk begins restoration of historic buildings after receiving an initial United States Congressional Grant.
1991	Fisk breaks ground for the Honors Building, the first new building in twenty years.
1996	The Historic Fisk Race Relations Institute is reestablished with a grant from the W.K. Kellogg Foundation; Henry Ponder resigns as President of Fisk.
1997	Rutherford H. Adkins became the eleventh President of Fisk.
1998	President Adkins dies February, after serving only eight months.
1999	John L. Smith, Jr. became the twelfth President of Fisk.
2001	Carolynn Reid-Wallace becomes the thirteenth President of Fisk.
2003	Carolynn Reid-Wallace resigns as President of Fisk.
2004	Charles Fuget became interim President of Fisk.
2004	Hazel O'Leary became the fourteenth president of Fisk.

Source: Library, 1997 Homecoming Committee

---

**PRESIDENTS OF FISK**  
**UNIVERSITY**

---

Erastus M. Cravath  
1875 – 1900

James G. Merrill  
1901 – 1908

George A. Gates  
1909 – 1912

Fayette A. McKenzie  
1915 – 1925

Thomas E. Jones  
1926 – 1945

Charles S. Johnson  
1946 – 1956

Stephen J. Wright  
1957 – 1966

James R. Lawson  
1967 – 1975

Walter J. Leonard  
1977 – 1984

Henry Ponder  
1984 – 1996

Rutherford H. Adkins  
1997 – 1998

John L. Smith, Jr.  
1999 – 2001

Carolynn Reid-Wallace  
2001 – 2003

Hazel R. O'Leary  
2004 - Present

**Table 1.3: Senior Administrators (Fall 2006)**

<b>SENIOR ADMINISTRATORS</b>	<b>AREA</b>
	<b>Office of the President</b>
<b>Hazel R. O'Leary</b>	<b>President</b>
<b>Sherri Rucker</b>	<b>Executive Assistant to the President</b>
<b>Stacey Garrett</b>	<b>University Counsel and Secretary to the Board</b>
<b>Ken West</b>	<b>VP for Communications and Public Affairs</b>
<b>Bobby Harris</b>	<b>Director of Information Technology Services</b>
	<b>Office of Financial Affairs</b>
<b>E. Thomas Oliver</b>	<b>Senior VP for Finance and Chief Financial Officer</b>
<b>Spence Maners</b>	<b>VP - Comptroller</b>
	<b>Office of Administrative Services</b>
<b>Marie Lang</b>	<b>VP for Administrative Services</b>
<b>Jim Adams</b>	<b>Director, Facilities &amp; Grounds</b>
	<b>INSTITUTIONAL ADVANCEMENT</b>
<b>(Vacant)</b>	<b>Vice President for Institutional Advancement</b>
<b>Debbie Faye</b>	<b>Assistant VP for Advancement Services</b>
<b>Joan Bahner</b>	<b>Director of Alumni Affairs</b>
<b>Adrienne Latham</b>	<b>Assistant Director of Alumni Affairs</b>
<b>Danielle Edwards</b>	<b>Director of Advancement Communications</b>
<b>(Vacant)</b>	<b>Director for Corporate &amp; Foundation Relations</b>
<b>Lolita Toney</b>	<b>Director Development Systems and Stewardship</b>
	<b>Office of the Provost</b>
<b>Dr. Kofi Lomotey</b>	<b>Executive VP and Provost</b>
<b>Sessi Aboha</b>	<b>Exec. Assistant to the Provost</b>
<b>Sheila Peters</b>	<b>Assistant Provost</b>
<b>Adam Myer</b>	<b>Director, Humanities &amp; Fine Arts Division</b>
<b>W. Eugene Collins</b>	<b>Director, Natural Science &amp; Mathematics Division</b>
<b>Reavis Mitchell</b>	<b>Director, Social Science Division</b>
<b>Princilla Evans</b>	<b>Director, Graduate Studies</b>
<b>James Quirin</b>	<b>Director, W.E.B. DuBois Honors Program</b>
<b>John Springer</b>	<b>VP for Institutional Assessment and Research</b>
<b>Victor Simmons</b>	<b>Curator, University Galleries</b>
<b>Jessie C. Smith</b>	<b>Director, Library &amp; Learning Resource Center</b>
<b>Alicia Gibbs</b>	<b>Associate Registrar</b>
<b>Keith Chandler</b>	<b>Dean of Admission</b>
	<b>Office of Student Affairs</b>
<b>Barbara Murrell</b>	<b>VP for Student Affairs</b>
<b>Jason Meriwether</b>	<b>Associate Dean of Student Affairs</b>
<b>Echelle Eady</b>	<b>Director, Career Planning and Placement</b>
<b>Lynwood Berry</b>	<b>Director, Orientation &amp; Student Activities</b>
<b>S. Head</b>	<b>Director of Athletics</b>

**Table 1.4 Academic Calendar Overview, Fall 2006 – Fall 2007**

**FALL SEMESTER 2006**

Classes Begin	Monday	August 28
Fall Break	Monday-Tuesday	October 23-24
Thanksgiving Vacation	Wednesday – Friday	November 22-24
Classes End	Tuesday	December 12

**SPRING SEMESTER 2007**

Classes Begin	Monday	January 9
Spring Vacation	Monday- Friday	March 6 -10
Classes End	Wednesday	April 26
Final Exams End	Friday	May 5
Commencement	Monday	May 8

**FALL SEMESTER 2007**


# **STUDENT AND ACADEMIC PROGRAM PROFILE**

## QUICK FACTS

### Students

- Average SAT for Entering Freshmen, Fall Semester 2005:

<u>Verbal</u>	<u>Math</u>	<u>Combined</u>
<b>491</b>	<b>480</b>	<b>971</b>

- Average ACT for All Entering Freshmen, Fall Semester 2005: Composite = 20.0
- Average High School GPA for Entering Freshmen, Fall Semester 2005: **3.02**
- Admissions, Fall Semester 2005:

	Number Applied	Number Accepted	Accepted Yield	Number Enrolled	Enrollment Yield
Freshman	1643	1310	79.3%	214	16.3%
Transfer	68	62	91.1%	32	51.6%

- Students at Fisk represent 36 states, The District of Columbia, The U.S. Virgin Islands, and 6 foreign countries.
- Fall Semester 2005 Headcount:
 

Full-Time:	844
Part-Time:	76
<b>Total:</b>	<b>920</b>

Full-Time Equivalent (FTE) Students                      887.5

- Degrees Conferred by Division, Academic Year 2004-05:

	Bachelors	Masters
Business Administration	27	---
Humanities and Fine Arts	24	---
Natural Science and Math	25	5
Social Science	64	3
<b>Total</b>	<b>140</b>	<b>8</b>

- First-to-Second year retention:    86.5%
- Graduation Rates:(May 2005 Graduation)

Four-Year Rate	41%
Five-Year Rate	52%
Six-Year Rate	59%

## ADMISSIONS

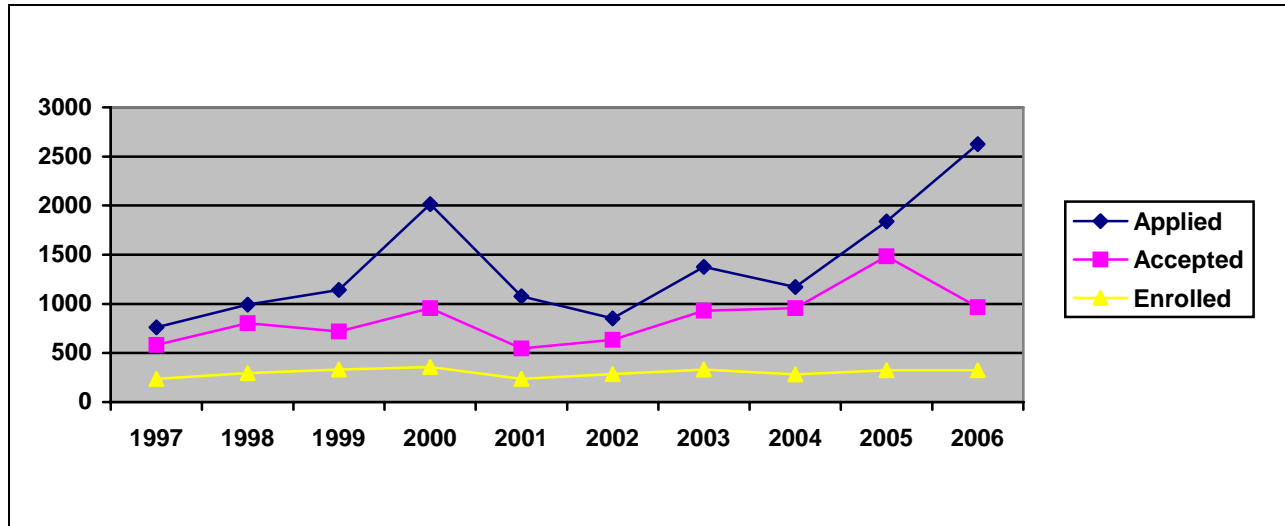
**Table 2.1 New Student Admissions (Includes new freshmen, transfer, re-admits and graduate students)**

**Fall Semesters, 1997-2006**

Fall Term	Number Applied	Number Accepted	Acceptance Yield	Number Enrolled	Enrollment Yield
2006	2627	967	36.8%	325	33.6%
2005	1,838	1,483	80.6%	324	21.8%
2004	1,170	957	81.8%	284	29.7%
2003	1,376	932	67.7%	331	35.5%
2002	853	636	74.6%	285	34.6%
2001	1,076	546	50.7%	236	43.2%
2000	2,015	956	47.4%	358	37.4%
1999	1,143	718	62.8%	331	42.4%
1998	991	804	81.8%	297	36.1%
1997	760	581	76.4%	239	41.4%

**Figure 2.1 New Student Applicants by Admission Status**

**Fall Semesters 1997 - 2006**



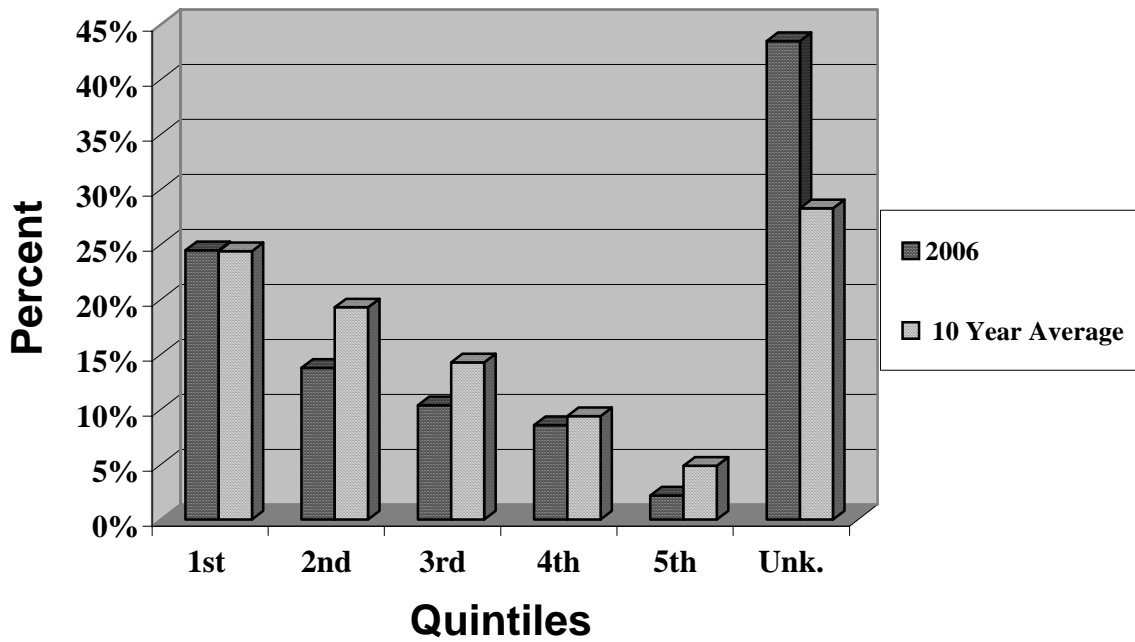
## ADMISSIONS

**Table 2.2 Percent Distribution of High School Rank**

**Fall Semesters, 1997-2006**

	<b>First Quintile</b>	<b>Second Quintile</b>	<b>Third Quintile</b>	<b>Fourth Quintile</b>	<b>Fifth Quintile</b>	<b>% Unknown Rank</b>
2006	24.5%	13.8%	10.4%	5.6%	2.2%	43.5%
2005	21.5%	23.4%	17.2%	8.6%	2.4%	26.8%
2004	24.7%	14.2%	14.6%	12.4%	6.2%	28.7%
2003	27.3%	14.7%	11.7%	13%	7.8%	25.1%
2002	22.2%	18.6%	15.9%	8.2%	4.5%	30.5%
2001	25.8%	21.9%	18.5%	12.6%	2.6%	17.9%
2000	27.0%	24.6%	13.7%	10.5%	7.7%	18.5%
1999	19.0%	16.1%	9.1%	6.2%	4.1%	54.1%
1998	27.2%	21.0%	12.9%	11.2%	4.0%	23.7%
1997	25.0%	24.4%	18.6%	10.3%	7.7%	14.1%
<b>10 Year Avg</b>	<b>24.4%</b>	<b>19.3%</b>	<b>14.3%</b>	<b>9.4%</b>	<b>4.9%</b>	<b>28.3%</b>

**Figure 2.2: Fall 2006 vs Ten-Year Average of High School Rank by Quintile**



- First quintile is the highest class rank
- Unk. means “unknown”



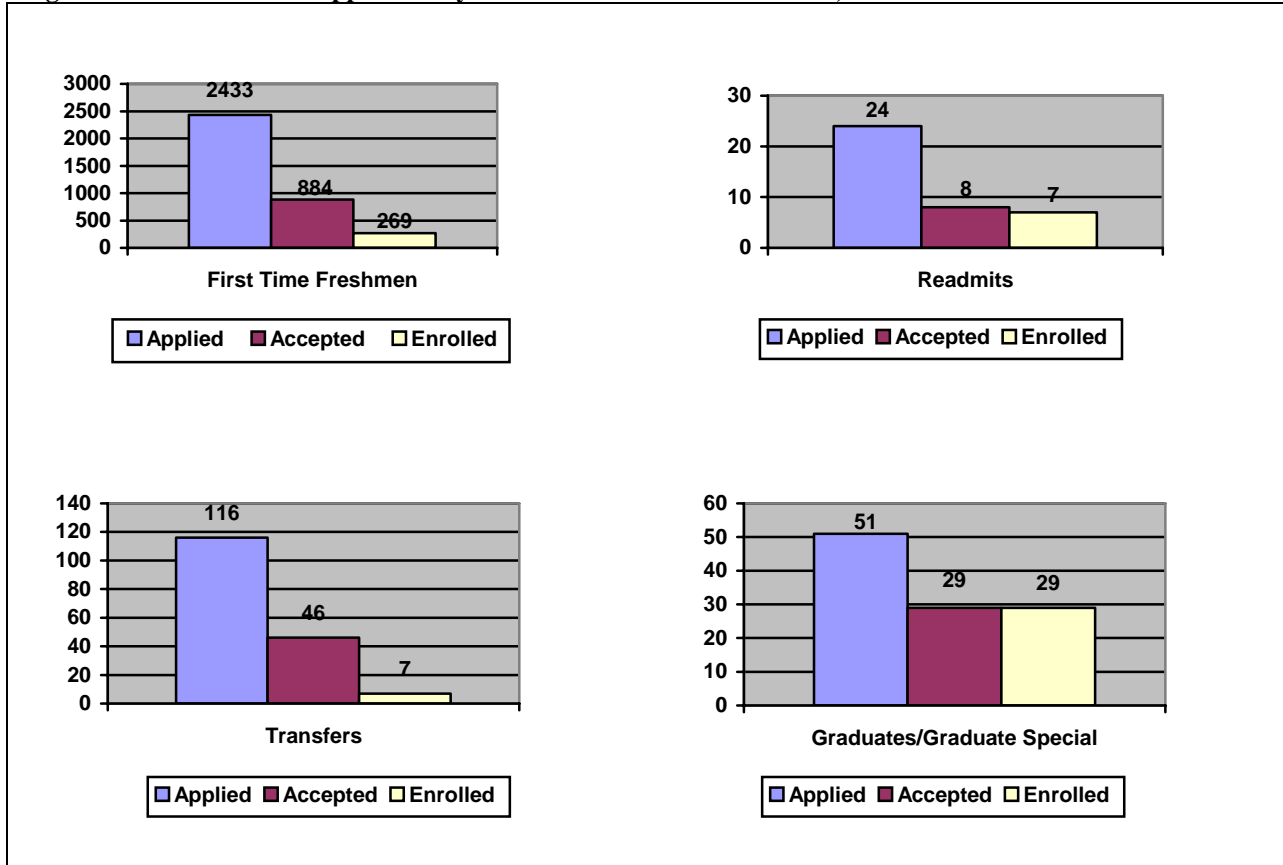
## ADMISSIONS

**Table 2.3: Entering Status of New Students, Fall Semester, 2006**

	First-Time Freshmen	Transfer	Readmit	Graduate	Graduate Special	Transient and Exchange	Total
Number Applied	2433	116	24	43	8	5	2627
Number Accepted	884	46	8	24	5	4	967
Accepted Yield	36.4%	39.7%	33.3%	55.8%	62.5%	80%	36.8%
Number Enrolled	269	30	7	24	5	3	324
Enrollment Yield	30.4%	65.25	87.5%	100%	100%	75%	28.6%

Fisk includes first-time freshmen (traditional), transfer, readmit (returned, after have dropped out for at least one semester), graduate, graduate special (post-baccalaureate), transient, and exchange students in the “new” student category each semester.

**Figure 2.3: New Student Applicants by Admission Status Fall Semester, 2005**



## ADMISSIONS

**Table 2.4: Admissions of First-Time Freshmen, Fall 2006**

### Entering Test Scores

	SAT	ACT
Range	980-2160	16-29
75 <sup>th</sup> Percentile	1630	24
Mean	1504	21.4
25 <sup>th</sup> Percentile	1380	20
Number students submitting scores	146	149

The SAT exams have recently changed in format, and the old two part exam (Quantitative and Verbal) now has three parts. The maximum score on the previous SAT was 1600; the new exam has a maximum score of 2400.

### High School Performance

#### High School GPA

Range	1.86 – 4.0
75 <sup>th</sup> Percentile	3.40
Mean	3.08
25 <sup>th</sup> Percentile	2.77
Number students submitting scores	237

#### High School Rank

Percent in Top 10%	28%
Percent in Top 50%	76%
Number students submitting scores	152

Data Source: Banner

## ADMISSIONS

**Table 2.5 Distribution of First Time Freshman Enrollment by Geographic Region and State  
Fall Semester, 2006**

<b><u>EAST</u></b>			<b><u>SOUTHWEST</u></b>	
Connecticut	0		Arkansas	11
Delaware	1		Louisiana	1
District of Columbia	2		New Mexico	0
Maryland	3		Oklahoma	0
Massachusetts	3		Texas	13
New Hampshire	0			
New Jersey	2		<b>Total</b>	<b>25</b>
New York	6			
Pennsylvania	2			
<b>Total</b>	<b>19</b>		<b><u>WEST</u></b>	
			Alaska	0
			Arizona	1
			California	14
<b><u>MIDWEST</u></b>			Colorado	1
Illinois	34		Hawaii	0
Indiana	4		Idaho	0
Iowa	0		Nevada	0
Kansas	0		Washington	2
Kentucky	2		Utah	0
Michigan	4			
Minnesota	2		<b>Total</b>	<b>18</b>
Missouri	8			
Ohio	10		<b><u>INTERNATIONAL/Territories</u></b>	
Wisconsin	5		Bahamas	7
West Virginia	0		Jamaica	34
			Trinidad	8
			Virgin Islands	1
<b>Total</b>	<b>69</b>		<b>Total</b>	<b>50</b>
<b><u>SOUTH</u></b>				
Alabama	5		<b>GRAND TOTAL FTFM</b>	<b>269</b>
Florida	5			
Georgia	25			
Mississippi	4			
North Carolina	2			
South Carolina	2			
Tennessee	40			
Virginia	1			
<b>Total</b>	<b>84</b>			

## FINANCIAL AID

**Table 2.6 Financial Aid Summaries: 2000-01 to 2004-05**

	<u>2000-01</u>	<u>2001-02</u>	<u>2002-2003</u>	<u>2003-2004</u>	<u>2004-2005</u>
<b>Grants<sup>1</sup></b>	\$1,325,104	\$1,809,660	\$1,867,816	\$1,854,449	\$1,666,298
<b>Loans<sup>2</sup></b>	\$5,222,629	\$4,931,958	\$6,107,801	\$5,781,973	\$5,372,593
<b>Self Help<sup>3</sup></b>	\$217,392	\$219,863	\$220,920	\$11,952	\$120,792
<b>Scholarships<sup>4</sup></b>	\$2,054,649	\$1,814,322	\$2,573,203	\$3,418,799	\$2,778,393
<b>TOTAL AID</b>	<b>\$8,819,774</b>	<b>\$8,775,803</b>	<b>\$10,769,740</b>	<b>\$11,067,173</b>	<b>\$9,938,076</b>
Unduplicated Recipients	730	699	733	831	753
Average Aid Per Student	\$11,967	\$12,555	\$14,693	\$13,318	\$13,198
<b>GRANTS:</b>					
-Average Grant/Student	\$1,798	\$2,589	\$2,548	\$2,232	\$2,213
-Percent of Total Aid	15.0%	20.6%	17.3%	16.7%	16.7%
<b>LOANS:</b>					
-Average Loan/ Student	\$7,086	\$7,056	\$8,333	\$6,957	\$7,135
-Percent of Total Aid	59.2%	56.3%	56.7%	52.2%	54.1%
<b>SELF-HELP:</b>					
-Average Amount Student	\$295	\$315	\$301	\$14	\$160
-Percent of Total Aid	2.4%	2.5%	2.1%	0.1%	1.2%
<b>SCHOLARSHIPS:</b>					
-Average Scholarship/ Student	\$2,788	\$2595	\$3,511	\$4,114	\$3,690
-Percent of Total Aid	23.3%	20.7%	23.9%	30.9%	28.0%

<sup>1</sup> Pell, SEOG, State

<sup>2</sup>Stafford, Perkins, Plus

<sup>3</sup>College Work Study, University Work

<sup>4</sup>UNCF, University, Outside Sources

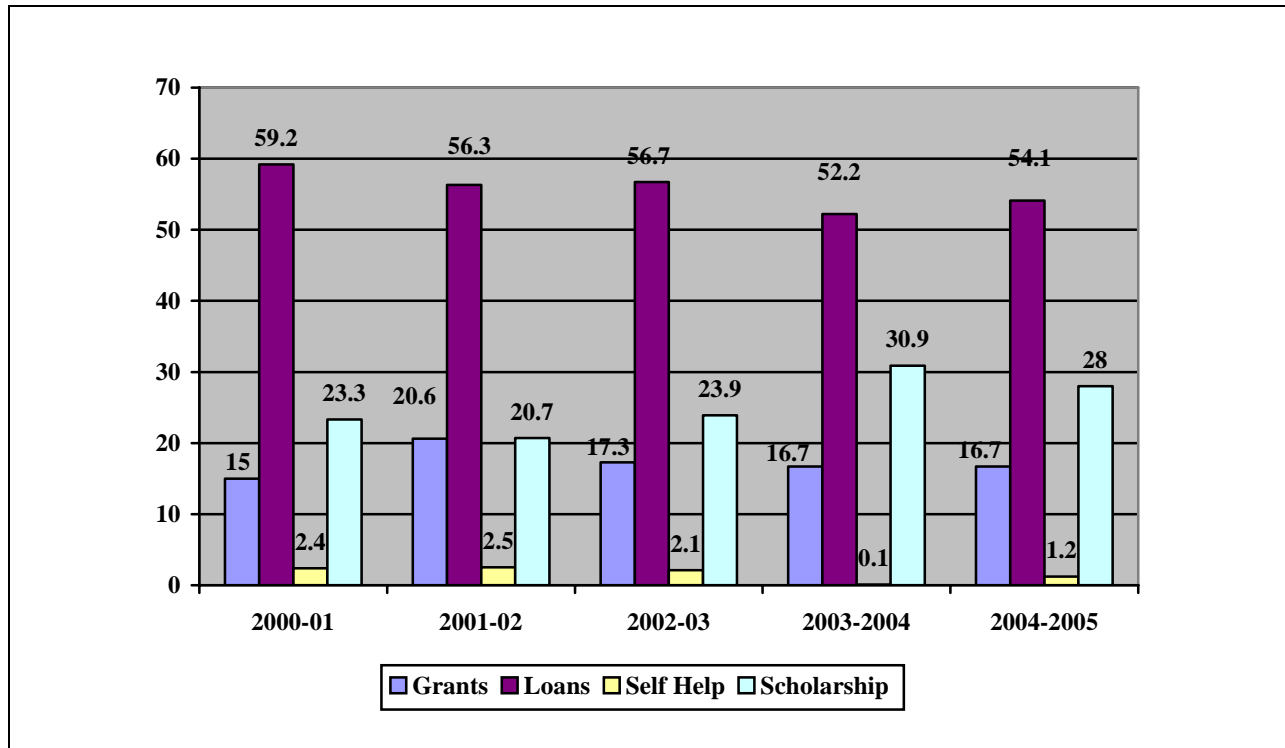
## FINANCIAL AID

**Table 2.7 Financial Aid Allocations 2003-04 and 2004-05**

TYPE OF AID	2003-2004		2004-2005	
	Number of Students	Amount Awarded	Number of Students	Amount Awarded
Pell Grants	472	\$1,432,679	417	\$1,224,724
SEOG	224	\$239,225	131	\$246,556
College Work Study		\$11,592	0	\$0
Stafford Loans	892	\$3,333,101	560	\$2,902,846
Perkins Loans	164	\$442,345	214	\$774,846
Plus Loans	156	\$1,415,003	155	\$1,694,901
Academic Scholarship/Grants		\$2,556,702	288	\$1,758,299
State Scholarship/Grants	63	\$154,965	95	\$448,566
Other Scholarship/Grants	312	\$62,097	183	\$887,338
<b>Total</b>		<b>\$11,067,173</b>		<b>\$9,938,076</b>

**Source: Institutional Research, Banner Database**

**Figure 2.4 Percent Distribution of Financial Aid by Category: 2000-01 through 2004-05**



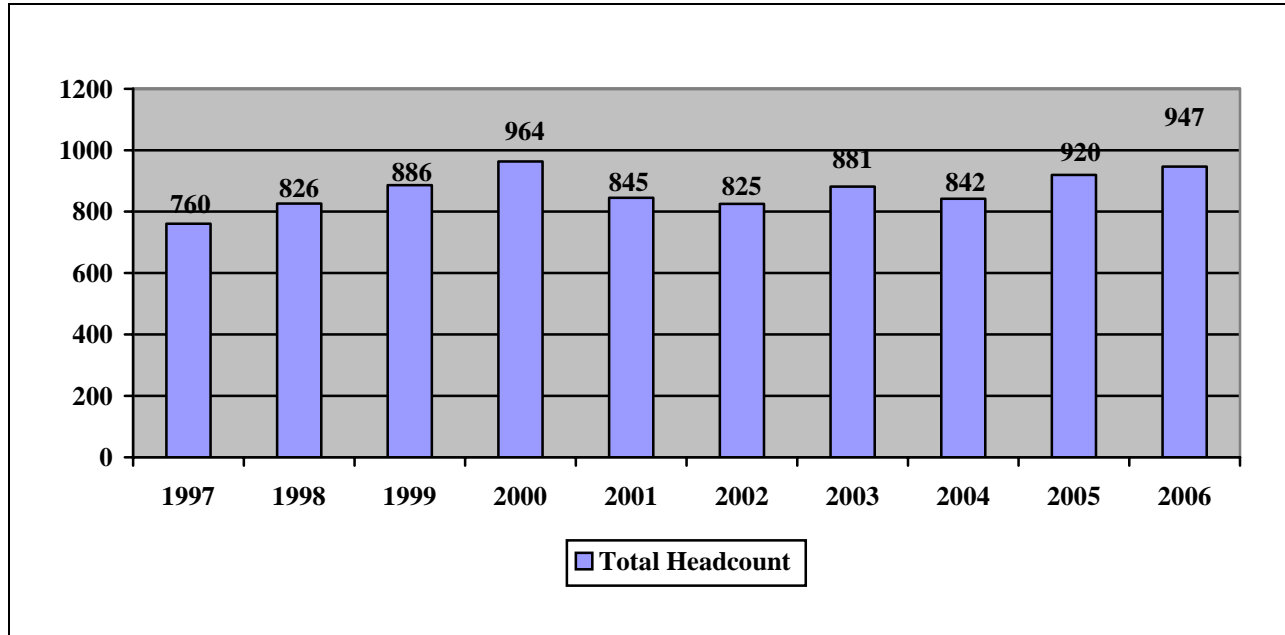
**Table 2.8: Total Headcount by Gender**

Fall Semesters 1997 – 2006

YEAR	MALE	FEMALE	TOTAL
2006	278	669	947
2005	282	638	920
2004	293	549	842
2003	278	603	881
2002	254	571	825
2001	260	625	845
2000	311	653	964
1999	268	618	886
1998	248	578	862
1997	226	534	760
<b>Ten Year Average</b>	<b>270</b>	<b>604</b>	<b>873</b>
<b>Average %</b>	<b>30.1%</b>	<b>69.9%</b>	

**Figure 2.5: Total Headcount**

Fall Semesters 1997 – 2006



## ENROLLMENT

**Table 2.9: Total Headcount by Academic Classification\***

**Fall Semesters 1997 – 2006**

YEAR	FRESHMEN	SOPHOMORES	JUNIORS	SENIORS	GRADUATE*	POST BAC	TOTALS
2006	397	194	149	141	52	14	947
2005	434	161	169	100	41	15	920
2004	342	191	142	119	29	19	842
2003	285	200	143	222	31		881
2002	339	170	175	108	33		825
2001	327	138	155	163	62		845
2000	375	172	149	148	120		964
1999	378	147	139	153	69		886
1998	322	120	128	189	67		826
1997	246	135	142	174	63		760
<b>10 Year Average</b>	<b>345</b>	<b>163</b>	<b>149</b>	<b>152</b>	<b>57</b>	<b>16</b>	<b>870</b>

\*For historical reasons, the Graduate column before 2004 also includes Post-Baccalaureate students who are not in the graduate degree program, but are taking courses for such programs as teacher certification, after receiving a Bachelor's degree at Fisk or elsewhere. As of fall 2004, we are reporting these separately.

\* Academic classifications are by earned credit hours (Freshman = 0-29; sophomore =30-59; junior = 60-89; senior >= 90). The large freshman count is to a certain extent due to the fact that many third semester students are still one or two credits shy of the 30 hours they need for sophomore status.

**Table 2.10: Headcount by Class and Gender: Fall Semester, 2006**

	Male	Female	Total
Freshmen	111	286	397
Sophomore	62	132	194
Junior	49	100	149
Senior	34	107	141
Graduate	19	33	52
Graduate, Special	3	11	14
-----	-----	-----	-----
Totals	278	609	947
(% Total)	29.4%	70.6%	100%

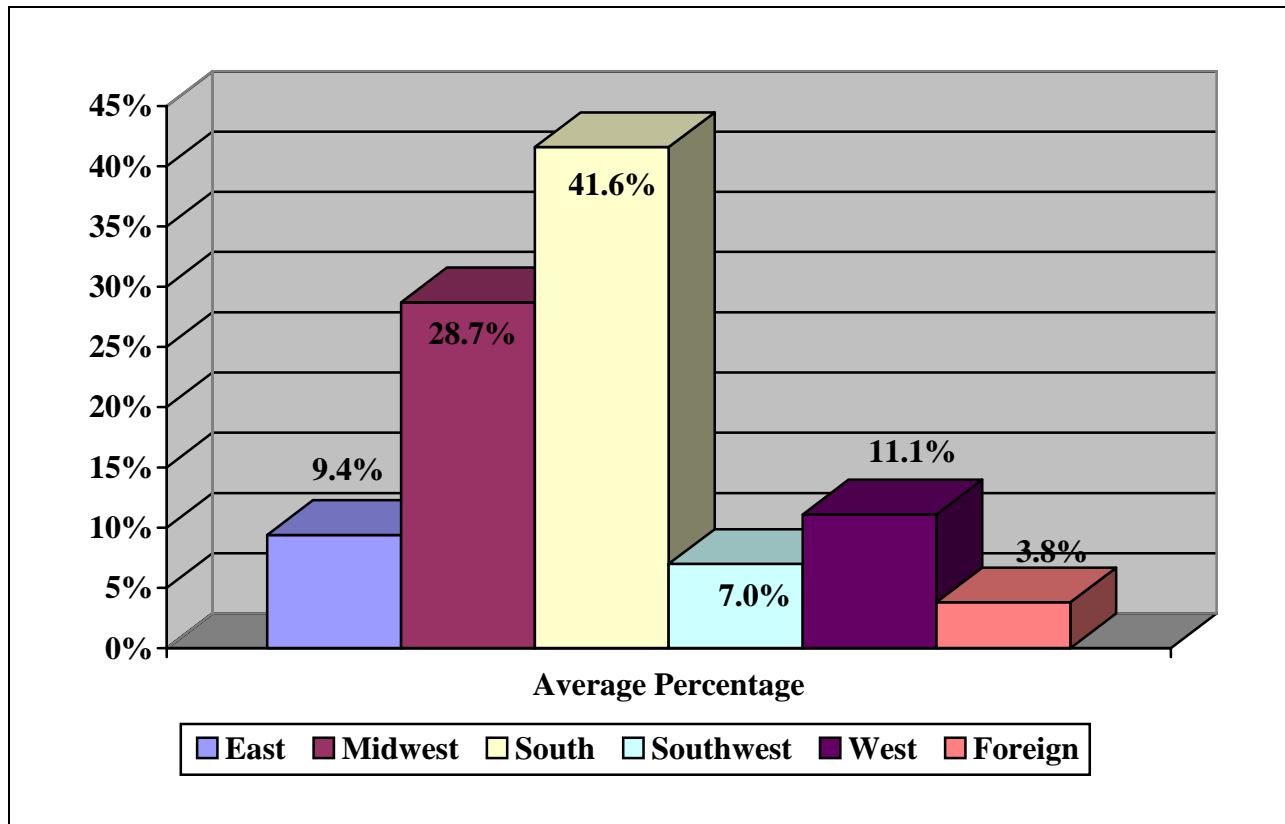
## ENROLLMENT

**Table 2.11 Percent Distribution of Headcount by Geographical Region**

Fall Semesters 1997 – 2006

	EAST	MIDWEST	SOUTH	SOUTHWEST	WEST	FOREIGN	TOTAL COUNT
2006	12.9%	26.7%	39.2%	8%	10.6%	7.8%	947
2005	6.9%	27.5%	43.9%	6.6%	12.1%	2.4%	920
2004	8.9%	29.0%	40.4%	5.1%	12.4%	4.2%	842
2003	8.6%	30.3%	40.4%	5.8%	11.4%	3.6%	881
2002	8.3%	29.3%	40.7%	6.0%	11.6%	5.0%	825
2001	8.2%	28.9%	41.2%	6.9%	10.0%	5.0%	845
2000	8.0%	27.5%	44.8%	6.8%	9.9%	3.0%	964
1999	9.5%	28.4%	40.9%	7.2%	10.2%	3.8%	886
1998	10.0%	28.5%	41.8%	8.0%	10.0%	1.5%	826
1997	11.2%	27.4%	42.6%	7.6%	10.8%	0.4%	760
1996	11.2%	26.4%	41.3%	8.5%	12.6%	0.2%	812
<b>10 Year Average</b>	<b>9.4%</b>	<b>28.7%</b>	<b>41.6%</b>	<b>7.0%</b>	<b>11.1%</b>	<b>3.5%</b>	<b>864</b>

Figure 2.6: Ten-Year Average of Percent Distribution of Fall Semester Headcount by Region: 1997 - 2006





## ENROLLMENT

**Table 2.12 Total Headcount Enrollment Distribution by Region and State**

Fall Semesters 2005 and 2006

	2005	2006		2005	2006
<b><u>EAST</u></b>			<b><u>SOUTH</u></b>		
Connecticut	2	9	Alabama	18	15
Delaware	0	1	Florida	17	17
District of Columbia	7	7	Georgia	54	68
Maryland	19	19	Mississippi	15	17
Massachusetts	3	6	North Carolina	4	3
New Jersey	5	7	South Carolina	3	5
New York	23	230	Tennessee	281	235
New Hampshire	0	0	Virginia	11	11
Pennsylvania	6	5	<b>TOTAL</b>	<b>403</b>	<b>381</b>
Rhode Island	0	0			
<b>TOTAL</b>	<b>64</b>	<b>73</b>			
			<b><u>SOUTHWEST</u></b>		
			Arkansas	22	29
<b><u>MIDWEST</u></b>			Louisiana	11	7
Illinois	133	130	Oklahoma	4	4
Indiana	7	9	Texas	24	36
Iowa	0	0	<b>TOTAL</b>	<b>61</b>	<b>76</b>
Kansas	1	0			
Kentucky	17	15	<b><u>WEST</u></b>		
Michigan	20	15	Alaska	0	0
Minnesota	0	3	Arizona	0	1
Missouri	21	22	California	99	90
Nebraska	2	2	Colorado	1	2
Ohio	43	40	Nevada	1	2
Wisconsin	9	13	New Mexico	1	2
West Virginia	0	4	Oregon	3	2
<b>TOTAL</b>	<b>253</b>	<b>253</b>	Idaho	0	0
			Washington	4	0
			Hawaii	1	1
			Utah	1	0
			<b>TOTAL</b>	<b>111</b>	<b>100</b>
			<b>INTERNATIONAL/TERRITORIAL</b>		
			Virgin Islands	16	2
			Puerto Rico	0	2
			Bahamas		18
			Jamaica		36
			Nigeria		6
			Trinidad		10
			Varied	23	0
			UNKNOWN	5	0
			<b><u>GRAND TOTAL</u></b>	<b>920</b>	<b>947</b>

## MAJOR PROGRAMS

**Table 2.14: Distribution of Undergraduate Majors by Division and Discipline**

Fall Semesters, 2002 through 2006

\*Joint majors are weighted ½, once in each major field.

	2002	2003	2004	2005	2006
<b><u>BUSINESS ADMINISTRATION</u></b>					
Business Administration	132	108.5	116.5	124.5	113.5
<b>DIVISION TOTAL</b>	<b>132</b>	<b>108.5</b>	<b>116.5</b>	<b>124.5</b>	<b>113.5</b>
% DECLARED MAJORS	20.6%	17.2%	14.6%	16.5%	
% HEADCOUNT	16.7%	12.8%	13.8%	13.5%	12.8%
<b><u>Humanities &amp; Fine Arts</u></b>					
Art	18.5	12.5	14.5	15.5	7
Dramatics & Speech	27	31	22	20	18
English	31	31.5	36.5	40	37
Modern Foreign Lang.	10	7	5	10.5	6.5
Music	13	23	25	29	29.5
Religion and Philosophy	9	5.5	8.5	8.5	6
<b>DIVISION TOTAL</b>	<b>99.5</b>	<b>110.5</b>	<b>111.5</b>	<b>123.5</b>	<b>104</b>
% DECLARED MAJORS	15.5%	17.5%	18.1%	16.3%	
% HEADCOUNT	12.6%	13%	14.0%	13.4%	
<b><u>NSM</u></b>					
Biology	94.5	122.5	116.5	153	159
Chemistry	26.5	28.5	28	33	24
Computer Science	19	26.5	22	22	14.5
Mathematics	9.5	9.5	4.5	4	5.5
Nursing (new in 2004)			26	33	50
Physics	9.5	3	6.5	28.5	9
<b>DIVISION TOTAL</b>	<b>159</b>	<b>190</b>	<b>203.5</b>	<b>273.5</b>	<b>262</b>
% DECLARED MAJORS	36.0%	30%	33.0%	36.2%	
% HEADCOUNT	26.6%	22.4%	25.6%	29.7%	
<b><u>Social Science</u></b>					
History	13	19.5	19	24	18
Political Science	60.5	51.5	45	49.5	40
Psychology	157	127	88.5	112	119
Sociology	20	25	2	23	44.5
Special Education (new in 2003)			12	26	13
<b>DIVISION TOTAL</b>	<b>250.5</b>	<b>223</b>	<b>185.5</b>	<b>234.5</b>	<b>245.5</b>
% DECLARED MAJORS	39.0%	35.3%	30.1%	31%	
% HEADCOUNT	31.6%	26.2%	23.4%	25.5%	
<b>TOTAL DECLARED MAJORS</b>	<b>641</b>	<b>632</b>	<b>617</b>	<b>756</b>	<b>725</b>
% HEADCOUNT	80.9%	74.4%	77.8%	82.2%	
<b>TOTAL UNDECLARED MAJORS</b>	<b>151</b>	<b>218</b>	<b>177</b>	<b>164</b>	
% HEADCOUNT	19.1%	25.6%	22.3%	17.8%	
<b>TOTAL HEADCOUNT</b>	<b>792</b>	<b>850</b>	<b>794</b>	<b>920</b>	

## CREDIT HOURS

**Table 2.15: Distribution of Credit Hours Offered, Produced, and Produced Per FTE Faculty and Average Class Size - Fall Semesters, 2001 through 2005**

	2001	2002	2003	2004	2005
<b>CORE CURRICULUM</b>					
No of Sections	29	29	28	33	40
Credit Hours Offered	116	112	108	108	128
Headcount	761	759	1,014	940	1062
Credit Hours Produced <sup>1</sup>	3,044	3,036	3,092	2992	3236
Credit Hours Produced /FTE/Faculty <sup>2</sup>	315	314	343.6	332.4	305.3
Average Class Size <sup>3</sup>	26.2	26.2	36.2	28.5	26.5
<b>UNDERGRADUATE STUDIES</b>					
No of Sections	232	220	215	225	231
Credit Hours Offered	675.5	654	630	660	682
Headcount	3,046	3,028	3,210	2913	3238
Credit Hours Produced	9,713	9,494	10,021	9042	10039
Credit Hours Produced /FTE/Faculty	173	174	190.9	164.4	176.7
Average Class Size	13.1	13.8	14.9	12.9	14.0
<b>GRADUATE STUDIES</b>					
No of Sections	28	19	16	18	21
Credit Hours Offered	55.5	34.5	40.5	42.5	48.5
Headcount	83	58	66	83	114
Credit Hours Produced	171	115	181.5	210	272
Credit Hours Produced /FTE Faculty	37	40	53	59	67
Average Class Size	3.8	3.1	4.1	4.6	5.4
<b>TOTALS</b>					
No of Sections	289	268	259	276	292
Credit Hours Offered	847	801	778.5	810.5	858.5
Headcount	3,245	3,845	4,290	3936	4414
Credit Hours Produced	12,928	12,635	13,294.5	1224.4	13,547
Credit Hours Produced /FTE/Faculty	183	189	205	181.3	189.5
Average Class Size	11.3	14.3	16.6	13.2	15.1

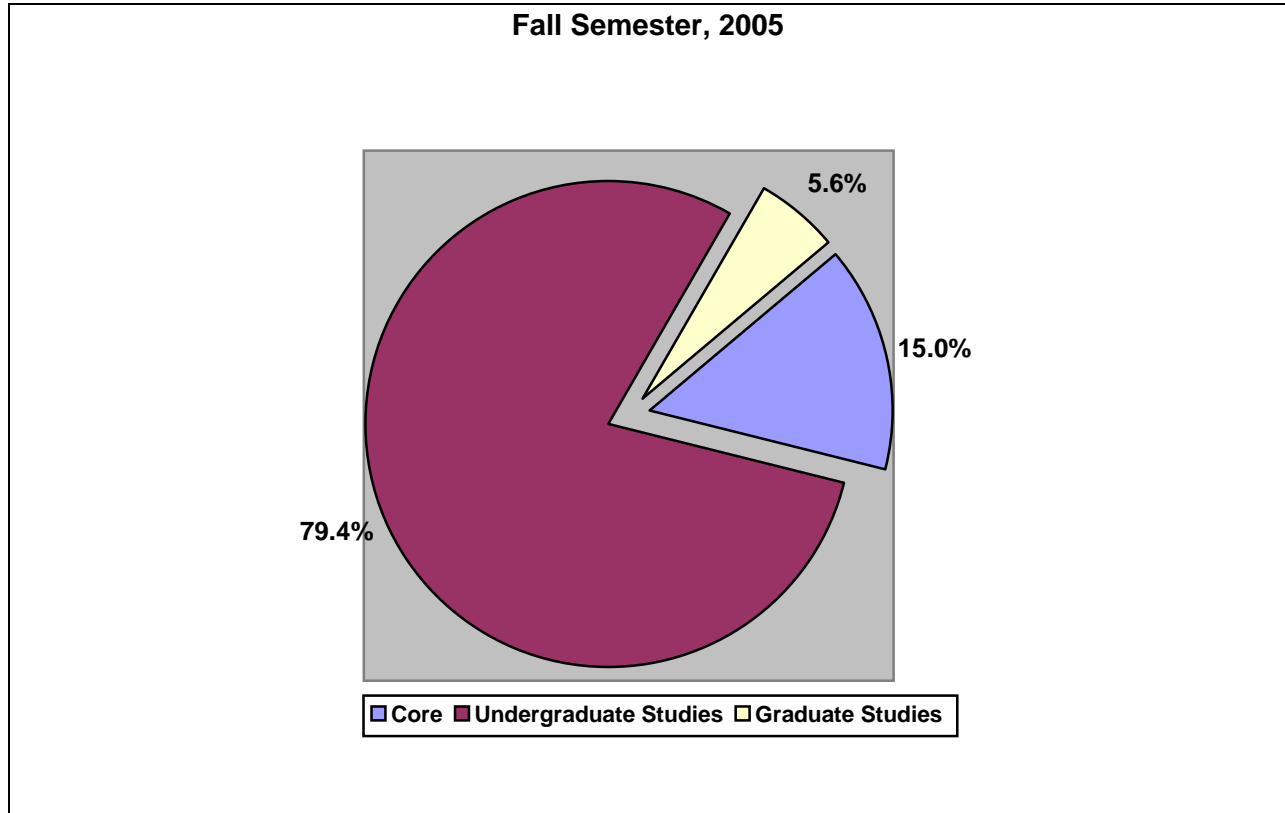
**SOURCE: Institutional Research, Banner Database**

1 Credit Hours Produced is derived by multiplying credit hours for each course by number of students enrolled in a course

2 FTE is "Credit hrs offered divided by 12 credits, where 12 credits is faculty load"

3 Average Class Size is "Headcount divided by number of sections"

Figure 2.7: Profile of Total Credit Hours Offered



**Table 2.16 Undergraduate Disciplines with Highest Credit Hours Produced**

**Fall Semester, 2005**

Discipline	Number Sections	Credit Hours Produced	Fall 2005 Rank
SPANISH	16	1288	1
MATH	13	1236	2
PSYCHOLOGY	11	1062	3
BUSINESS ADMIN	15	832	4
BIOLOGY	17	772	5

**Table 2.17: Distribution of Credit Hours Offered, Credit Hours Produced, Credit Hours Produced per FTE Faculty and Average Class Size****Fall Semester, 2006**

	Number of Sections	Credit Hours Offered	Enrollment	Credit Hours Produced	CHP/FTE-Faculty	Average Class Size
<b>By Curricular Level:</b>						
Core	39	120	1,042	3,132	305.3	26.5
Undergraduate Studies	257	766	3,442	10,642	176.7	14.0
Graduate Studies	25	52.5	148	340	67	5.4
<b>Total</b>	<b>321</b>	<b>946.5</b>	<b>4,632</b>	<b>14,114</b>	<b>189.5</b>	<b>15.1</b>

<b>Core Curriculum by Course:</b>						
100	9	0	259	0	0	31
110	10	40	274	1096	306	25
130	4	16	66	264	312	26
140	1	4	24	96	278	23
210	4	16	106	424	349	29
220	2	8	81	204	325	27
230	3	12	92	332	231	19
250	3	12	83	332	320	26
360	3	12	87	348	296	25
<b>Total</b>	<b>39</b>	<b>120</b>	<b>1042</b>	<b>3132</b>	<b>305</b>	<b>26</b>
<b>Undergraduate Studies by Division/Program:</b>						
BUA	18	60	311	992	92	16.4
HFA	114	323	1136	3546	133	10.2
NSM	76	217	1311	3416	227	18.1
SSC	49	195	684	2686	206	16.4
<b>Total</b>	<b>257</b>	<b>768</b>	<b>3442</b>	<b>10,642</b>	<b>177</b>	<b>14.0</b>
<b>Graduate Studies by Discipline:</b>						
BIO	2	3	11	16	0	0
CHE	6	12.5	18	23.5	23.5	4.8
PHY	6	13	38	76	76	5.6
PSY	11	24	81	224	101	5.6
<b>Total</b>	<b>21</b>	<b>48.5</b>	<b>114</b>	<b>339.5</b>	<b>68</b>	<b>5.4</b>

**UNDERGRADUATE STUDIES CREDIT HOURS**

Table 2.18: Credit Hours Offered, Credit Hours Produced, Credit Hours Produced per FTE Faculty and Average Class Size

**Fall Semester, 2006**

	NO. SECTIONS	CREDIT HOURS OFFERED	FTE FACULTY ENROLLED	CREDIT HOURS PRODUCED	CREDIT HOURS PRODUCED/ FTE-FAC	AVG CLASS SIZE
<b><u>BUA</u></b>						
ACC	4	14	0.9	64	112	11.3
BUA	7	21	1.7	153	485	22.8
ECO	2	6	0.8	43	151	16.0
FIN	3	11	0.9	36	110	10.6
MGT	2	8	0.6	15	84	10.5
<b>TOTAL</b>	<b>18</b>	<b>60</b>	<b>5.1</b>	<b>311</b>	<b>942</b>	<b>16.4</b>
<b><u>HFA</u></b>						
ART	10	40	3.3	76	304	7.6
DSP	9	30.3	1.8	55	171	7.8
ENG	7	28	2.3	101	404	15.3
HFA	9	26;5	1.9	47	139	5.2
<b><u>MFL</u></b>						
FRE	2	8	0.6	44	176	11.0
SPA	17	68	5.3	345	1380	82.6
SWA	1	4		17	68	
MUS	48	80	5.2	316	394	7.5
RPH	4	16	2.0	46	184	9.0
<b>TOTAL</b>	<b>107</b>	<b>300.8</b>	<b>22.6</b>	<b>1040</b>	<b>3206</b>	<b>10.2</b>
<b><u>HON</u></b>	<b>6</b>	<b>24</b>	<b>1.2</b>	<b>24</b>	<b>96</b>	<b>2.2</b>
<b><u>NSM</u></b>						
BIO	17	37	2.5	447	772	23.0
CHE	14	30	2.5	277	565	19.2
CSC	10	22.5	2.3	88	241	8.2
MTH	18	69	4.3	339	1236	23.7
NSCI	3	6.5	0.6	43	62	9.3
PHY	9	19	1.5	89	246	12.7
<b>TOTAL</b>	<b>74</b>	<b>190</b>	<b>13.7</b>	<b>1311</b>	<b>3122</b>	<b>18.1</b>
<b><u>SSC</u></b>						
EDU	9	32	1.6	61	160	18.6
HIS	5	19.3	1.6	58	227	17.0
PSC	8	32	2.6	89	356	40.7
PSY	11	43.5	3.4	273	1168	24.5
SOC	7	28	2.2	129	516	19.0
SPED	6	24	1.5	42	132	9.3
SSC	2	8	1.0	39	156	19.6
<b>TOTAL</b>	<b>46</b>	<b>185.8</b>	<b>14.2</b>	<b>701</b>	<b>2715</b>	<b>16.4</b>
<b><u>UNDERGRAD</u></b>						
<b>TOTALS</b>	<b>255</b>	<b>760</b>	<b>56.7</b>	<b>3387</b>	<b>10,422</b>	<b>14.0</b>

SOURCE: Institutional Research, Banner Data

**CLASS SIZE****Table 2.21 Distribution of Class Sizes - Undergraduate and Core Studies: Fall Semester 2006**

Size Range	BU	CORE	HFA	HON	NSM	SSC	Total
<b>1 - 5</b>	0	1	53	5	15	12	86
<b>6 - 10</b>	5	1	22	1	8	11	48
<b>11-15</b>	2	0	9	0	14	9	34
<b>16-20</b>	3	4	5	0	16	1	29
<b>21-25</b>	5	10	9	0	5	6	35
<b>26-30</b>	1	11	8	0	6	4	30
<b>31-35</b>	1	12	1	0	3	0	17
<b>36-40</b>	0	2	0	0	3	2	7
<b>41-50</b>	0	0	0	0	3	3	6
<b>50 and Above</b>	0	0	1	0	1	0	2
<b>TOTAL</b>	<b>17</b>	<b>41</b>	<b>108</b>	<b>6</b>	<b>74</b>	<b>48</b>	<b>294</b>

**Table 2.22: Distribution of Class Size for Graduate Studies: Fall Semester 2006**

Size Range	NSM	SSC	Total
1 - 5	7	6	13
6-10	7	2	9
11-15	0	3	3
<b>Total</b>	<b>14</b>	<b>11</b>	<b>25</b>

**Table 2.23: Academic Performance of Students**

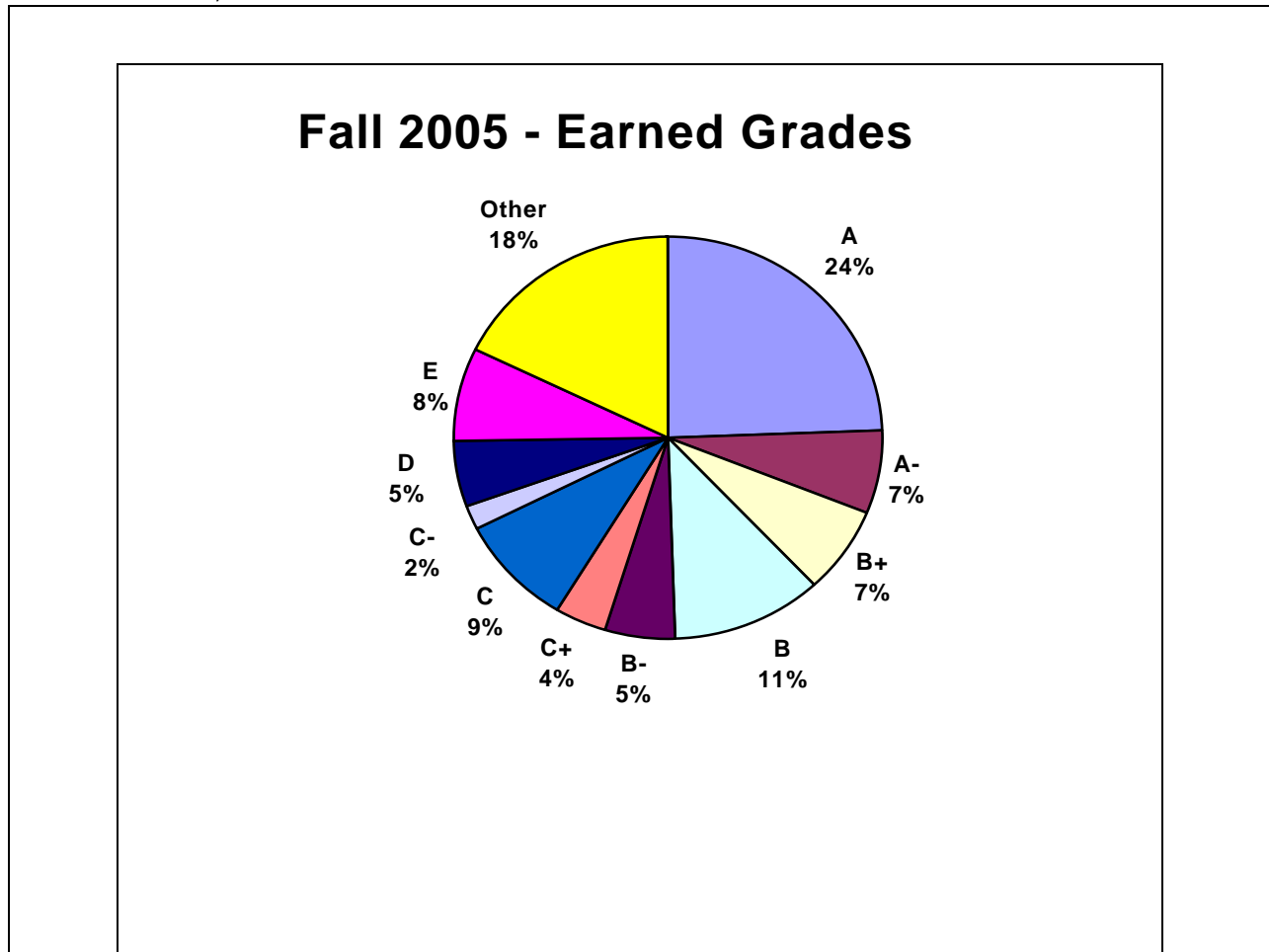
**Fall Semester 2006**

CLASS	4.00 GPA Fall Semester	DEAN'S LIST (3.30 GPA and Above) Fall Semester
Freshmen	11	56
Sophomores	7	35
Juniors	2	29
Seniors	8	27
<b>Totals</b>	<b>28</b>	<b>147</b>
<b>% Undergraduate Enrollment</b>	<b>3.2%</b>	<b>16.7%</b>

SOURCE: Banner Academic History

**Figure 2.8: Profile of All Earned Grades: Fall 2006**

Other = Withdrawn, Pass/Fail

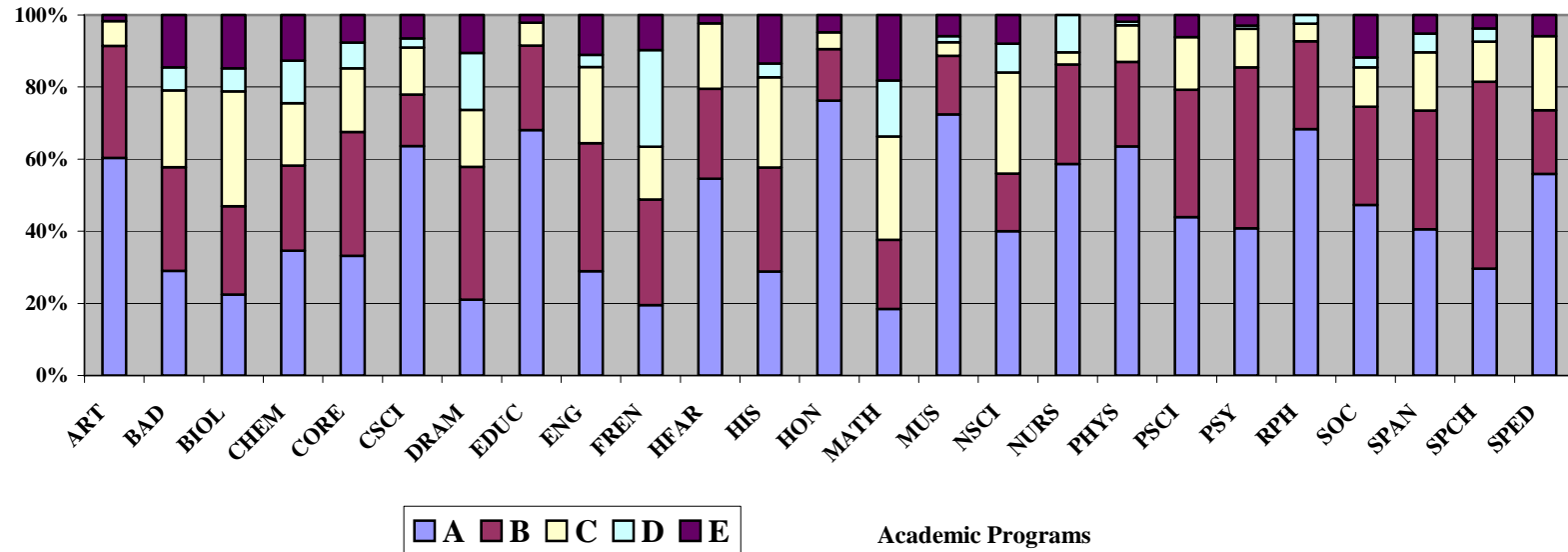






## DISTRIBUTION OF GRADES

**PERCENT GRADE DISTRIBUTIONS BY DISCIPLINE - FALL 2006 (+/- Grades Combined)**



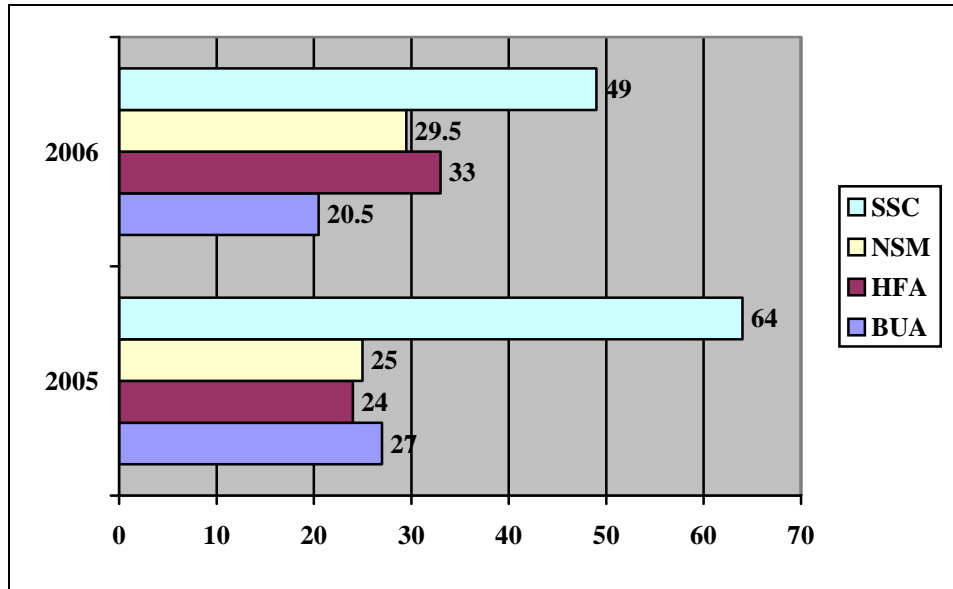
**Table 2.26: Degrees Awarded by Major**

Commencements May 2002 through May 2006 (Including degrees completed in previous December)

	2002	2003	2004	2005	2006
<b>BACHELOR DEGREES</b>					
<u>Business Administration</u>	<b>47</b>	<b>24</b>	<b>25.5</b>	<b>27</b>	<b>20.5</b>
<u>HFA Division</u>					
ART	9	4.5	4	3.5	8
DRAMA & SPEECH	4	4	12.5	5	5
ENGLISH	10.5	8.5	10	8	11
MODERN FOR LANG	2.5	2	4	1.5	3.5
MUSIC	0	5	6.5	3	2
RELIGION & PHIL	1	5	1	3	3.5
HFA TOTAL	<b>27</b>	<b>29</b>	<b>39</b>	<b>24</b>	<b>33</b>
<u>NSM</u>					
BIOLOGY	10	17	17	17	18.5
CHEMISTRY	8	9	4	5	5
COMP SCI	11	3.5	6	3	3
MATH	0	1.5	1	0	0
PHYSICS	7	3	1	0	3
Natural Science Total	<b>36</b>	<b>34</b>	<b>29</b>	<b>25</b>	<b>29.5</b>
<u>SOCIAL SCIENCES DIV</u>					
HISTORY	6.5	3.5	3.5	6	6.5
POLITICAL SCI	13	12.5	16.5	13	9
PSYCHOLOGY	35	38.5	49.5	32.5	29
SOCIOLOGY	9.5	7.5	6	6.5	4.5
SPECIAL ED	-	-	2	6	0
SSC TOTAL	<b>64</b>	<b>62</b>	<b>77.5</b>	<b>64</b>	<b>49</b>
GENERAL STUDIES	-	-	2	-	-
<b>TOTAL BACHELOR DEGREES</b>	<b>174</b>	<b>149</b>	<b>171</b>	<b>140</b>	<b>132</b>
<b>MASTERS DEGREES</b>					
BIOLOGY	1	-	0	1	0
CHEMISTRY	1	1	0	0	0
PHYSICS	6	-	3	4	3
PSYCHOLOGY	5	2	3	3	4
SOCIOLOGY	5	1	0*	0	0
<b>TOTAL MASTERS DEGREES</b>	<b>18</b>	<b>4</b>	<b>6</b>	<b>8</b>	<b>7</b>
<b>TOTAL DEGREES</b>	<b>192</b>	<b>153</b>	<b>177</b>	<b>148</b>	<b>139</b>
Source: Banner, Registrar	*Sociology MA program dropped				

## DEGREES CONFERRED

**Figure 2.9: Undergraduate Degrees Conferred by Division  
Commencements 2005 and 2006**



**Table 2.27 Percent Distribution of Bachelor's Degrees Conferred by Major  
Commencements 2005 and 2006**

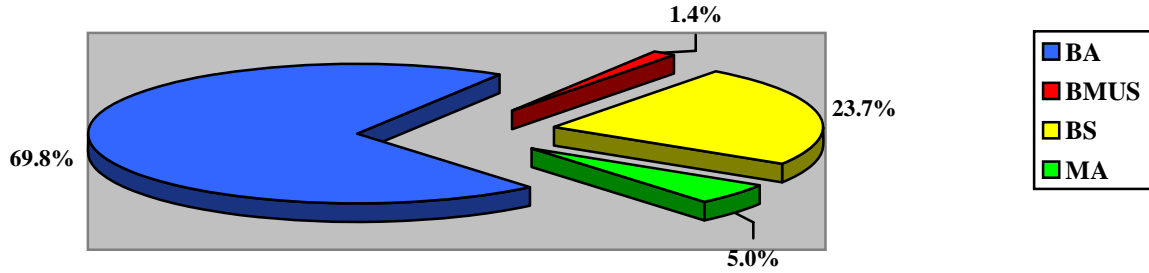
2005		2006	
Psychology	23.2%	Psychology	23.2%
Business Admin	19.2%	Business Admin	19.2%
Biology	12.1%	Biology	12.1%
Political Science	9.6%	Political Science	9.6%
All Other Departments	36.3%	All Other Departments	36.3%

**SOURCE: Banner; Office of the Registrar**

## DEGREES CONFERRED

**Figure 2.10: Degrees Conferred by Type**

Commencement 2006



**Table 2.28: Characteristics of Undergraduate Degree Recipients**

Commencement, 2006

Percent Graduating in Four Years	68.9%
Percent Graduating in Five Years	13.6%
Percent Graduating in Six Years	2.2%
Percent Graduating in more than Six Years	2.2%
Percent Graduating who were Transfer Students	23.5%
<b>Percent Graduating with Honors:</b>	
Phi Beta Kappa	%
Summa Cum Laude	%
Magna Cum Laude	%
Cum Laude	%
General University Honors	%
Departmental Honors	%

## DEGREES CONFERRED

Table 2.29 Degrees Conferred by Gender and Discipline - Commencements 2005 and 2006

	2005			2006		
	M	F	TOTAL	M	F	TOTAL
<b>BACHELORS OF ARTS</b>						
<u>Business Administration</u>	-	1	1	0.5	0.5	1
<u>Humanities &amp; Fine Arts</u>						
ART	-	-	-	0.5	1.5	2
DSP	-	5	5	1	4	5
ENG	2	6	8	3	7.5	10.5
FRE	-	-	-	-	-	-
MUS	-	2	2	-	-	-
RPS	2.5	0.5	3	2.5	1	3.5
SPA	-	1.5	1.5	-	3.5	3.5
<b>SUBTOTAL</b>	<b>4.5</b>	<b>16</b>	<b>20.5</b>	<b>7</b>	<b>17.5</b>	<b>24.5</b>
<u>Natural Sciences &amp; Math</u>						
BIO	6	11	17	2	16.5	18.5
CHE	-	-	-	-	-	-
CSC	0.5	-	0.5	0.5	0.5	1
MTH	-	-	-	-	-	-
PHY	-	-	-	3	-	3
<b>SUBTOTAL</b>	<b>6.5</b>	<b>11</b>	<b>17.5</b>	<b>5.5</b>	<b>17</b>	<b>22.5</b>
<u>Social Sciences</u>						
HIS	3	3	6	2	4.5	6.5
PSC	3	10	13	2	7	9
PSY	8	24.5	32.5	5.5	23.5	29
SOC	5	1	6	1	3.5	4.5
SPED	5	1	6	0	0	0
<b>SUBTOTAL</b>	<b>20.5</b>	<b>43.5</b>	<b>64</b>	<b>10.5</b>	<b>38.5</b>	<b>49</b>
General Studies	-	-	-	-	-	-
<b>TOTAL B.A.</b>	<b>31.5</b>	<b>70.5</b>	<b>102</b>	<b>23.5</b>	<b>73.5</b>	<b>97</b>
<b>BACHELOR OF MUSIC</b>						
MUPF	1	3	4	-	2	2
<b>TOTAL B OF MUS</b>	<b>1</b>	<b>3</b>	<b>4</b>	<b>-</b>	<b>2</b>	<b>2</b>
<b>BACHELOR OF SCIENCE</b>						
<u>Business Administration</u>	16	10	26	4	15.5	19.5
<b>SUBTOTAL</b>	<b>16</b>	<b>10</b>	<b>26</b>	<b>4</b>	<b>15.5</b>	<b>19.5</b>
<u>Humanities and Fine Arts</u>						
ART	1.5	2	3.5	4.5	1.5	6
MUS	-	-	-	-	-	-
<b>SUBTOTAL</b>	<b>1.5</b>	<b>2</b>	<b>3.5</b>	<b>4.5</b>	<b>1.5</b>	<b>6</b>
<u>Natural Sciences and Math</u>						
CHE	1	4	5	2	3	5
CSC	1	1.5	2.5	1.5	1	2.5
PHY	-	-	-	-	-	-
<b>SUBTOTAL</b>	<b>2</b>	<b>5.5</b>	<b>7.5</b>	<b>3.5</b>	<b>4</b>	<b>8.5</b>
<b>TOTAL Bach. of Sci</b>	<b>19.5</b>	<b>17.5</b>	<b>37</b>	<b>12</b>	<b>21</b>	<b>33</b>

<b>TOTAL BACHELOR DEGREES</b>	<b>51</b>	<b>89</b>	<b>140</b>		<b>35.5</b>	<b>96.5</b>	<b>132</b>
<b>MASTERS OF ARTS</b>	<b>M</b>	<b>F</b>	<b>T</b>		<b>M</b>	<b>F</b>	<b>T</b>
<u>NSM</u>							
BIO	-	1	1		-	-	-
CHE	-	-	-		-	-	-
PHY	4	-	4		3	-	3
<b>SUBTOTAL</b>	<b>4</b>	<b>-</b>	<b>5</b>		<b>3</b>	<b>-</b>	<b>3</b>
<u>Social Sciences</u>							
PSY	-	3	3		1	3	4
SOC	-	-	-		-	-	-
<b>SUBTOTAL</b>	<b>-</b>	<b>3</b>	<b>3</b>		<b>1</b>	<b>3</b>	<b>4</b>
<b>TOTAL MASTERS DEGREES</b>	<b>4</b>	<b>4</b>	<b>8</b>		<b>3</b>	<b>4</b>	<b>7</b>
<b>TOTAL DEGREES</b>	<b>55</b>	<b>93</b>	<b>148</b>		<b>38.5</b>	<b>100.5</b>	<b>139</b>

## RETENTION AND GRADUATION RATES

**Table 2.30: Retention and Graduation Rates: Fall Semesters, 1997 through 2006**

<b><u>RETENTION</u></b>	<b><u>1997</u></b>	<b><u>1998</u></b>	<b><u>1999</u></b>	<b><u>2000</u></b>	<b><u>2001</u></b>	<b><u>2002</u></b>	<b><u>2003</u></b>	<b><u>2004</u></b>	<b><u>2005</u></b>	<b><u>2006</u></b>
<b>A.</b> No of new (First-Time) Freshmen.	<b>159</b>	<b>224</b>	<b>242</b>	<b>248</b>	<b>151</b>	<b>220</b>	<b>231</b>	<b>178</b>	<b>214</b>	<b>269</b>
<b>B.</b> No. of students from line <b>A</b> who returned for a second year.	<b>150</b> (94.3%)	<b>196</b> (87.5%)	<b>232</b> (95.9%)	<b>186</b> (75.0%)	<b>125</b> (83%)	<b>185</b> (84.1%)	<b>192</b> (83.1%)	<b>154</b> (86.5%)	<b>171</b> (80%)	
<b>C.</b> No. of students from line <b>A</b> who returned for a third year.	<b>149</b> (93.7%)	<b>175</b> (78.1%)	<b>159</b> (65.7%)	<b>166</b> (67%)	<b>109</b> (72.2)	<b>148</b> (67.3%)	<b>160</b> (69.3%)	<b>125</b> (70.2%)		
<b>D.</b> No. of students from line <b>A</b> who returned for a fourth year.	<b>127</b> (79.9%)	<b>149</b> (66.5%)	<b>153</b> (63.2%)	<b>132</b> (53.2%)	<b>97</b> (64.2%)	<b>133</b> (60.0%)	<b>143</b> (61.9%)			
<b>E.</b> No. of students from line <b>A</b> who returned for a fifth year.	<b>26</b> (16.3%)	<b>22</b> (9.8%)	<b>29</b> (12.0%)	<b>34</b> (13.7%)	<b>25</b> (16.5%)	<b>31</b> (14.1%)				
<b>F.</b> No. of students from line <b>A</b> who returned for a sixth year.	<b>3</b> (1.9%)	<b>2</b> (0.9%)	<b>7</b> (2.9%)	<b>5</b> (2.0%)	<b>6</b> (2.4%)					
<b><u>GRADUATION</u></b>										
<b>G.</b> No of students from line <b>A</b> who graduated in four years.	<b>86</b> (54.1%)	<b>120</b> (53.4%)	<b>107</b> (44.2%)	<b>102</b> (41.1%)	<b>62</b> (41.0%)	<b>91</b> (41.4%)				
<b>H.</b> No. of students from line <b>A</b> who graduated in five years.	<b>113</b> (71.1%)	<b>147</b> (65.6%)	<b>134</b> (55.4%)	<b>130</b> (52.4%)	<b>76</b> (50.3%)					
<b>I.</b> No. of students from line <b>A</b> who graduated in six years.	<b>114</b> (71.6%)	<b>152</b> (67.9%)	<b>144</b> (59.5%)	<b>133</b> (53.6%)						

**SOURCE: Institutional Research, Banner Database**



---

## **FACULTY/STAFF PROFILES**

---

## QUICK FACTS

---

### Faculty – Fall Semester 2006

- Instructional and Research Faculty Profile:

Full-Time Instructional* Faculty	60
On-Leave Faculty	3
Part-Time Instructional Faculty**	50
Research Faculty	<u>17</u>
<b>Total</b>	<b>130</b>

- Full and Part-Time Faculty Profile by Gender:

Male	81
Female	<u>49</u>
<b>Total</b>	<b>130</b>

- Full and Part-Time Faculty by Highest Degree:

Doctoral	79
Master's	<u>51</u>
<b>Total</b>	<b>130</b>

- Percent Tenured Full-Time Instructional Faculty **82%**

- Full-Time Instructional Faculty Profile by Race and Ethnicity:

Black	35
White	19
Asian	5
Hispanic	<u>1</u>
<b>Total</b>	<b>60</b>

\*Instructional faculty are those with classes and other academic duties equivalent to a twelve credit-hour load.

\*\*Many part-time instructional faculty hold full-time staff and administrative positions

FALL 2004: Table 3.1 Full-Time Instructional Faculty

<b>Department of Business Administration</b>			
	<b>RANK</b>	<b>HIGHEST DEGREE</b>	<b>DEGREE FIELD</b>
Cargill, Stafford (Chair)	Associate Professor	PhD	Economics
Cambronero, Alfredo	Associate Professor	PhD	Economics
Holman, Vinita	Assistant Professor	MA	Accounting
Umontuen, Nicholas*	Adjunct Lecturer	MPA	Business Administration
<b>Division of Humanities and Fine Arts</b>			
Dr. Adam Meyer, Director			
<b>Art</b>			
Fort, L. Fran (on leave)	Lecturer	MAT	Art
Henry, Alicia, Chair	Associate Professor	MFA	Art
<b>Dramatics and Speech</b>			
Fields, Peter (Chair)	Assistant Professor	PhD	Dance
Felder-Fentress, Persephone	Associate Professor	MFA	Theater
Lambert, E. Jean	Associate Professor	PhD	Speech
<b>English</b>			
Bracks, Lean'tin (Chair)	Associate Professor	PhD	English Literature
Clark, Jill	Assistant Professor	PhD	English
Collins, L. M.	Professor Emeritus	PhD	English
Davidson, Adenike	Associate Professor	PhD	English
Hale, Gwendolyn	Assistant Professor	PhD	English
Meyer, Adam (Chair)	Associate Professor	PhD	English
Popkin, David	Associate Professor	PhD	English
<b>Modern Foreign Languages</b>			
Brooks, Marcellus	Assistant Professor	MA	Spanish
Goavec, Della (Leave) (Chair)	Assistant Professor	PhD	French
Meriwether, Curline	Lecturer	MA	Spanish
Mgonja, Zablon	Fulbright Foreign language Visiting Scholar		
Nasatir, Robert	Assistant Professor	PhD	Spanish
Rasico, Nancy (Interim Chair)	Lecturer	MAT	Spanish
Robinson, Candace	Lecturer		Spanish
<b>Music</b>			
Autry, Philip (Chair)	Associate Professor	DMA	Music
Bumbulis, Valija	Assistant Professor	M. Music	Music (Voice)
Kwami, Paul	Curb-Beaman Professor of Music	M. Music	Music
Nash, Gary	Associate Professor	PhD	Music
Stofko, Diane	Assistant Professor	PhD	Music
Williams, Anthony	Associate Professor	PhD	Music
<b>Religious and Philosophical Studies</b>			
Collier, Karen (Chair)	Associate Professor	PhD	Religion
Curry, Jason	Assistant Professor	PhD	Religion
McCoy, Matthew	Lecturer	MA	-

Table 3.1: Full-Time Instructional Faculty – *Continued*

<b>Division of Natural Science and Mathematics</b>			
Dr. W. Eugene Collins, Director			
DEPARTMENT	RANK	HIGHEST DEGREE	DEGREE FIELD
<b>Biology</b>			
Freeman-Junior, Phyllis	Associate Professor	PhD	Biomedical Science
Gunasekaran, Muthukumaran	Professor	PhD	Biology
Ike, Justus (Chair)	Associate Professor	PhD	Biology
Martin, Patrick M.	Assistant Professor	PhD	Biology
McCarroll, Patricia (On Leave)	Lecturer, Core Coordinator	MS	Biology
<b>Chemistry</b>			
Evans, Princilla (Chair, Dir. of Graduate Studies)	Associate Professor	PhD	Chemistry
Gostowski, Rudy C.	Visiting Professor	PhD	Chemistry
Lu, Weijie	Associate Professor	PhD	Chemistry
Pratt, Lawrence	Assistant Professor	PhD	Chemistry
Wingfield, Robert	Associate Professor	PhD	Chemistry
<b>Mathematics &amp; Computer Science</b>			
Egarievwe, Steve	Associate Professor	PhD	Physics
Hota, Sanjukta (Math Coord.)	Associate Professor	PhD	Mathematics
Kim, TaeEun	Visiting Professor	PhD	Mathematics
Mann, II, N. Horace	Associate Professor	PhD	Biomedical Engineering
Martin, Cathy	Associate Professor	PhD	Mathematics
Melvin, Peter J.*	Dir. of the Math Laboratory		
Murray, Leroy	Associate Professor	MA, JD	Mathematics
Papousek, Elizabeth	Associate Professor	PhD	Mathematics
Qian, Lei (Computer Science Coordinator)	Assistant Professor	PhD	Computer Science
Smith, Ronald	Lecturer	MS	Mathematics
<b>Physics</b>			
Burger, Arnold	Associate Professor, Director of Materials Science Labs)	PhD	Physics
Collins, Warren E.	Professor	PhD	Physics
Morgan, Steven (Chair)	Professor	PhD	Physics
Mu, Richard	Associate Professor	PhD	Physics
Springer, John M.*	Professor	PhD	Physics
Wallace, Bryan Kent	Laboratory Instructor	MA	Physics
Watson, Michaeld (On Leave)	Assistant Professor	PhD	Physics
<b>Division of Social Science</b>			
Dr. Reavis Mitchell, Director			
<b>History</b>			
Mitchell, Reavis (Chair)	Associate Professor	DA	History
Quirin, James	Professor	PhD	History
Wynn, Linda	Visiting Lecturer	MPA	History
<b>Political Science</b>			
Adebanjo, Jennifer (Chair)	Associate Professor	PhD	Political Sci
King, Preston	Visiting Distinguished Professor	PhD	Political Sci
Nimley, Anthony	Professor	PhD	Political Sci

<b>Psychology</b>			
Bellard, Stephanie	Visiting Assistant Professor	PhD	Psychology
Carson, Richard (Interim Chair)	Assistant Professor	PhD	Psychology
Cunningham, Rhonda	Visiting Assistant Professor	PhD	Psychology
Peters, Sheila (Chair)*, Assoc. Provost	Associate Professor	PhD	Psychology
Stadler, Jonathan	Visiting Professor	PhD	Psychology

<b>Sociology &amp; Anthropology</b>			
Brignall, Thomas W.	Visiting Assistant Professor	PhD	Sociology
Smith, Dani (Chair)	Associate Professor	PhD	Sociology
<b>Teacher Education Program</b>			
Lomotey, Kofi	Professor	PhD	Teacher Education
Thomas, Debbie	Associate Professor; Director	EdD	Teacher Education
Steele, Earlie	Assistant Professor	EdD	Special Education

### Core Curriculum Instructional Faculty (Full-Time)

Dr. Lean'tin L. Bracks, Interim Coordinator

Dr. Lean'tin L. Bracks	Associate Professor	PhD	English
Dr. Jill Clark	Assistant Professor	PhD	English
Dr. Karen Collier	Associate Professor	PhD	Religion and Philosophy
Dr. Adenike Davidson	Associate Professor	PhD	English
Dr. Phyllis Freeman-Junior	Associate Professor	PhD	Biology
Dr. Gwendolyn Hale	Assistant Professor	PhD	English
Dr. Alicia M. Henry	Associate Professor	PhD	Art
Dr. Jean Lambert	Associate Professor	PhD	Dramatics and Speech
Mr. Matthew A. McCoy	Lecturer	PhD	Dramatics and Speech
Dr. Caqthy Martin	Associate Professor	PhD	Mathematics
Dr. Adam Meyer	Associate Professor	PhD	English
Dr. David Popkin	Associate Professor	PhD	English
Dr. James Quirin	Professor	PhD	History
Mr. Ronald Smith	Lecturer	MS	Mathematics
Dr. Diane Stofko	Associate Professor	PhD	Music
Ms. Linda T. Wynn	Visiting Lecturer	MPA (Public Admin)	History
Dr. Anthony Williams	Associate Professor	PhD	History

### Part-Time Instructional Faculty

**Table 3.2: Part-Time Instructional Faculty**

<b>Department of Business Administration</b>			
Kawatra, Sunil			Accounting
McNamee, Dennis	Adjunct Lecturer	JD	
Potts, Felicha	Adjunct Lecturer	MS	
<b>Division of Humanities and Fine Arts</b>			
Collins, L.M.	Professor Emeritus	PhD	English
Conkwright, Kathy	Adjunct Lecturer	BA	Communications
Duke, Christopher*	Lecturer	MA	Music
Fisher, Joseph	Adjunct Lecturer		Education
Grigsby, Paul	Adjunct Lecturer	EdD	Art
Hardy, William	Adjunct Lecturer	DMIN	Religious and Phil. Studies
Jones, Theodore	Lecturer	MFA	Art
Lassiter, Stanley O.	Adjunct Lecturer		Music

Miller, Paul**	Visiting Professor	PhD	Spanish
Minkins, Andre A.	Adjunct Lecturer	MA	Speech
Newby, Linda	Adjunct Lecturer		Music
Pendergrast	Adjunct Lecturer		Music
Simmons, Victor*	Adjunct Lecturer		Art
Weiss, Lisa A.**	Visiting Professor		French
Wilkinson, Carlton**	Adjunct Lecturer	MFA	Art

<b>Division of Natural Science and Mathematics (Part-Time)</b>			
Cleveland, James*	Adjunct Lecturer	MS	Chemistry
Cook, Thomas H.	Visiting Professor	PhD	Nursing
Frierson, Eli	Adjunct Lecturer	MeD	Mathematics
Hall, Mack	Adjunct Lecturer	MA	Biology
Johnson, Rolanda L.	Visiting Professor	PhD	Nursing
McShepard, Gerard	Adjunct Lecturer	MS	Biology
Martin, Kelvisha	Adjunct Lecturer	MS	Biology
Ueda, Akira*	Research Assistant Professor	PhD	Physics
<b>Division of Social Science (Part-Time)</b>			
Bowers, Richard	Adjunct Lecturer	MS	Special Education
Karpos, Mary	Visiting Professor **	PhD	Sociology
Kilcrease, Karolyn	Adjunct Lecturer	MEd	Special Education
Menzise, Jeffery	Adjunct Lecturer	PhD	Psychology
Sawyers, James	Adjunct Lecturer	MEd	Teacher Education
Smith, Derek	Adjunct Lecturer	MEd	Special Education
Smith, Tarik A.	Adjunct Lecturer	MA	Social Sciences
Stewart, Tanesha	Adjunct Lecturer	MS	Education
<b>Core Curriculum (Part-Time)</b>			
Collier, Ingrid*	Adjunct Lecturer	MA	Core 100
Crenshaw, Tiffany	Adjunct Lecturer	MS	Core 230
Crowder, Stephanie	Adjunct Lecturer	PhD	Core 210, 250
Faulkner, Roosevelt*	Adjunct Lecturer	EdD	Core 100
Giles, Bernice*	Adjunct Lecturer		Core 100
Gilmore, Erica	Adjunct Lecturer		Core 100
Irby, Jocelyn	Adjunct Lecturer	PhD	Core 110
Joyner-Smith, Hazel	Adjunct Lecturer		Core 100
King, Anita	Adjunct Lecturer		Core 100
McShepard, Gerard	Adjunct Lecturer	MA	Core 230
Menzise, Jeffery	Adjunct Lecturer	PhD	Core 100
Roche, Nancy	Adjunct Lecturer		Core 110
Smith, Tarik	Adjunct Lecturer		Core 100
Tribble, Sherman	Lecturer	PhD	Core 210

**Notes:**

\* Full-Time Administrator or Staff

\*\*Vanderbilt University Exchange Professor

## RESEARCH FACULTY AND STAFF

**Table 3.3: Research Faculty and Staff**

<b>NAME</b>	<b>RANK</b>	<b>HIGHEST DEGREE</b>	<b>RESEARCH AREAS</b>
Aga, Roberto	Research Assistant Professor	PhD	Physics
Bhattacharya, Ajanta	Research Associate		Physics
Bhattacharya, Pijush	Research Assistant Professor	PhD	Physics
Buliga, Vladimir	Research Associate		
Caulfield, John	Distinguished Research Professor	PhD	Holography , Optical Logic
Crenshaw, Tiffany	Research Technician	MA	Natural Science and Math
Cui, Yunlong	Research Associate Professor	PhD	Physics
Groza, Michael	Research Assistant	MA	Radiation Detectors
Hawrami, Rastgo	Research Associate (PT)		Physics
Guo, Mingsheng	Research Assistant Professor	PhD	Physics
Lawrie, Jenifer	Research Assistant		
Pan, Zhengda	Research Assistant Professor	PhD	Optical Materials, Laser Spectroscopy, and Fiber Optics
Roy, Utpal	Research Assistant Professor	PhD	Physics
Sambandam, Senthil	Research Assistant Professor	PhD	Electrical Contacts to SIC, and Growth of Carbon Nanostructures
Silberman, Enrique	Research Professor	PhD	Physics
Ueda, Akira	Research Assistant Professor	PhD	Physics
Vikram, Chandra	Research Professor	PhD	Holography , Speckle Metrology, Optical Logic, and Interferometry

## FACULTY STATISTICS

### Fall Semesters, 2005 and 2006

**Table 3.4: Distribution of Full-Time Instructional Faculty by Division and Gender**

DIVISIONS	2005					2006			
	M	F	TOT	%		M	F	TOT	%
Business Administration	2	1	3	3.8%		3	1	4	6.7%
Humanities & Fine Arts	8	11	19	36.5%		10	11	21	35%
Natural Sciences/ & Math	15	5	20	36.5%		17	4	21	35%
Social Sciences	5	7	12	23.0%		6	8	14	23/3%
<b>TOTALS</b>	<b>30</b>	<b>24</b>	<b>54</b>	<b>100%</b>		<b>36</b>	<b>24</b>	<b>60</b>	<b>100%</b>

\*Individuals with non-teaching administrative appointments or on leave are not counted unless they also teach, even though they may retain a tenure-track status, as an administrator.

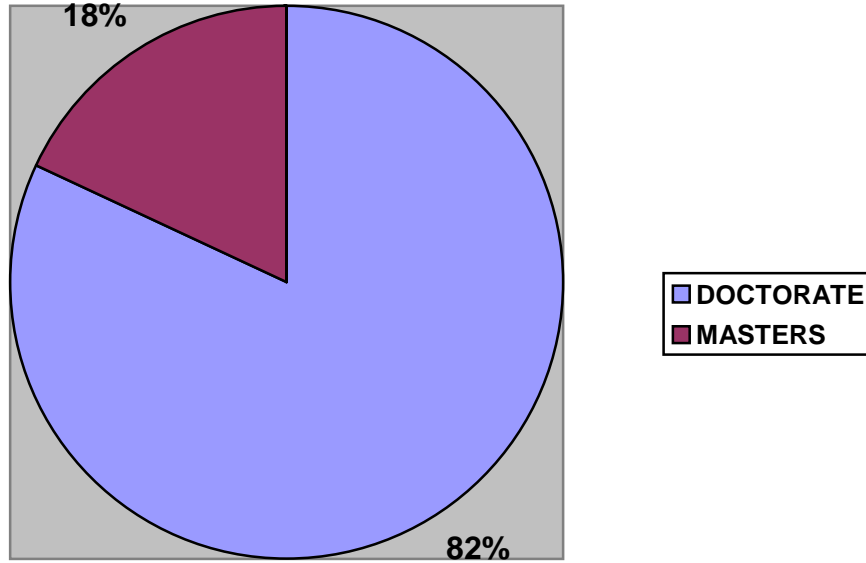
**Table 3.4.2: Distribution of Full-Time Instructional Faculty by Academic Discipline and Gender**

DISCIPLINES	2005				2006		
	M	F	T		M	F	T
ART	0	2	2		0	1	1
BIOLOGY	2	2	4		3	1	4
BUSINESS ADMIN	2	0	2		3	1	4
CHEMISTRY	3	1	4		4	1	5
COMPUTER SCIENCE	2	0	2		3	0	3
DRAMATICS & SPEECH	1	1	2		1	2	3
ENGLISH	3	2	5		2	4	6
HISTORY	2	1	3		2	1	3
MODERN FOREIGN LANG	2	2	4		2	1	3
MATHEMATICS	2	3	5		3	2	5
MUSIC	3	2	5		4	2	6
PHYSICS	4	0	4		4	0	4
POLITICAL SCIENCE	1	1	2		1	1	2
PSYCHOLOGY	2	2	4		2	3	5
RELIGION & PHIL. STUDIES	0	1	1		1	1	2
SOCIOLOGY	1	1	2		1	1	2
TEACHER CERTIFICATION	0	1	1		0	2	2
<b>TOTALS (Count)</b>	<b>30</b>	<b>24</b>	<b>54</b>		<b>36</b>	<b>24</b>	<b>60</b>
<b>TOTALS (%)</b>	<b>56%</b>	<b>44%</b>			<b>60%</b>	<b>40%</b>	



**Table 3.5: Profile of Highest Earned Degree for Full-Time Instructional Faculty**

Fall Semester, 2006			
	MASTERS	DOCTORATE	TOTAL
<b>BUA</b>	2	2	4
<b>HFA</b>	6	15	21
<b>NSM</b>	2	19	21
<b>SSC</b>	1	13	14
<b>TOTAL</b>	11	49	60
<b>(%)</b>	<b>(18%)</b>	<b>(82%)</b>	<b>(100%)</b>



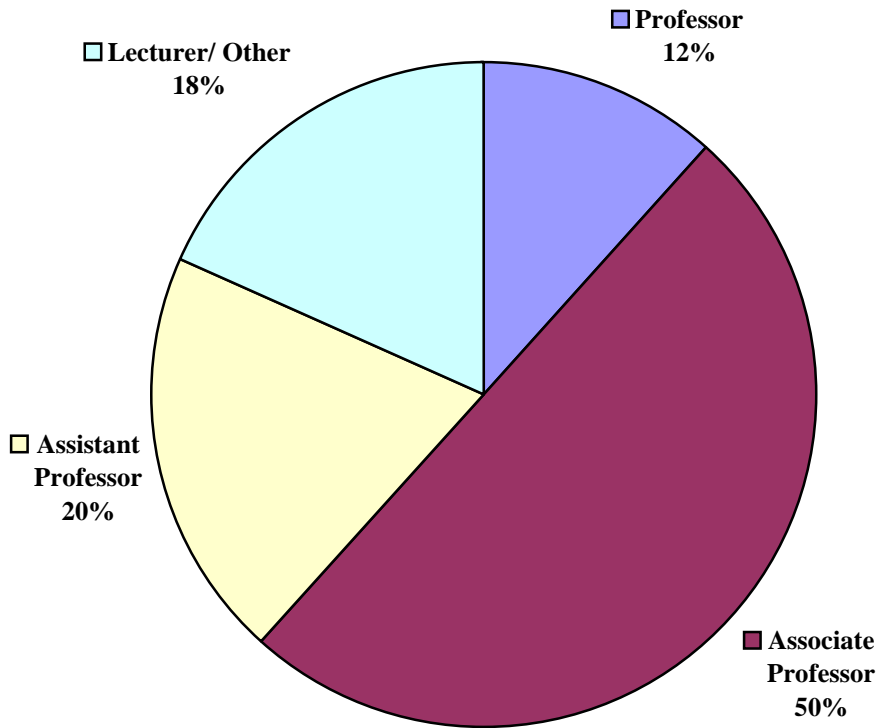
**Table 3.6: Distribution of Academic Rank of Full-Time Instructional Faculty by Division**

**Fall Semester, 2006**

	Professor	Associate Professor	Assistant Professor	Instructor	Lecturer / Other	Total
<b>BUA</b>	0	2	1	0	1	4
<b>HFA</b>	0	12	6	0	3	21
<b>NSM</b>	4	12	2	0	3	21
<b>SSC</b>	3	4	3	0	4	14
<b>TOTALS</b>	7	30	12	0	11	60
(%)	(11.7%)	(50%)	(20%)	(0%)	(18.3%)	(100.0%)

**Figure 3.2 Profile of Academic Rank for Full-Time Faculty**

**Fall Semester, 2006**



**Table 3.7 Distribution of Gender and Tenure for Full-Time Instructional Faculty by Division**

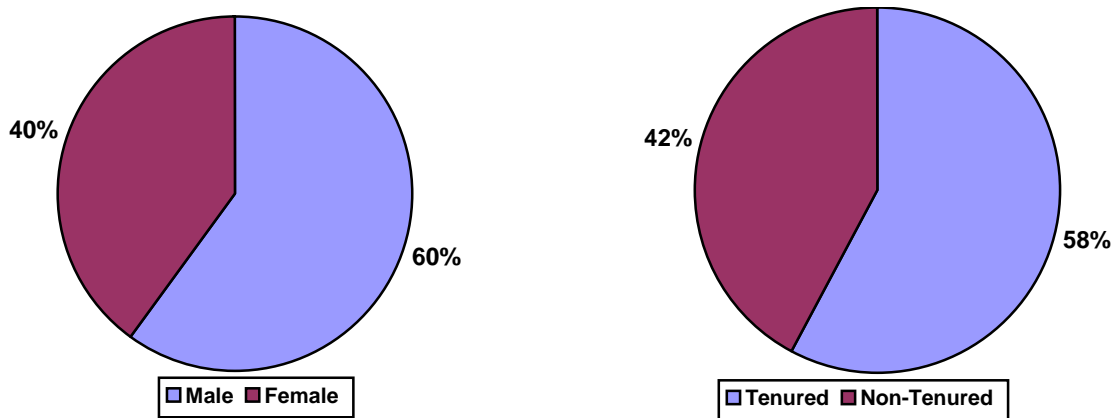
Fall Semester, 2006

	MALE		FEMALE		TOTALS	
	T	NT	T	NT	T	NT
BUA	2	1	0	1	2	2
HFA	5	5	6	5	11	10
NSM	10	6	5	0	15	6
SSC	3	3	3	3	6	6
<b>SUBTOTALS</b>	<b>20</b>	<b>16</b>	<b>14</b>	<b>10</b>	<b>34</b>	<b>26</b>
					(57.6%)	(42.3%)
<b>TOTALS</b>	<b>36</b>		<b>24</b>		<b>60</b>	
(%)	(60%)		(40%)		(100.0%)	

T = Tenured, NT = Not Tenured

**Figure 3.3: Profile of Gender and Tenure for Full-Time Instructional Faculty**

**Fall Semester, 2006**

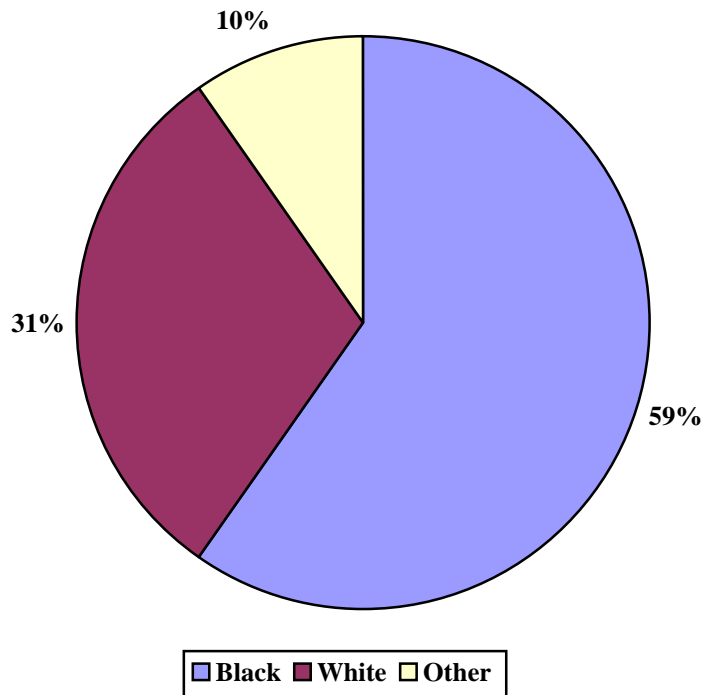


**Table 3.8: Distribution of Race for Full-Time Instructional Faculty by Division  
Fall Semester, 2006**

	<b>BLACK</b>	<b>WHITE</b>	<b>OTHER</b>	<b>TOTAL</b>
<b>BUA</b>	3	1	0	4
<b>HFA</b>	12	9	0	21
<b>NSM</b>	10	5	6	21
<b>SSC</b>	10	4	0	14
<b>TOTALS</b>	<b>35</b>	<b>19</b>	<b>6</b>	<b>60</b>
	<b>(58.3%)</b>	<b>(31.7%)</b>	<b>(10%)</b>	<b>(100%)</b>

**Figure 3.4 Profile by Race for Full-Time Faculty**

**Fall Semester, 2006**



**Table 3.9: Distribution of Full-Time Instructional Faculty by Rank, Race and Gender  
Fall Semesters, 2005 and 2006**

**MALE**

	2005				2006			
	B	W	O	TOTAL	B	W	O	TOTAL
<b>PROFESSOR.</b>	2	2	1	<b>5</b>	3	4	0	<b>7</b>
<b>ASSOCIATE PROFESSOR</b>	9	4	4	<b>17</b>	9	5	3	<b>16</b>
<b>ASSISTANT PROFESSOR.</b>	3	1	0	<b>4</b>	3	2	1	<b>6</b>
<b>INSTRUCTOR</b>	0	0	0	<b>0</b>	0	0	0	<b>0</b>
<b>LECTURER</b>	2	2	0	<b>4</b>	2	1	1	<b>4</b>
<b>OTHER</b>	0	0	0	<b>0</b>	1	2	0	<b>3</b>
<b>TOTAL</b>	<b>14</b>	<b>8</b>	<b>4</b>	<b>30</b>	<b>18</b>	<b>14</b>	<b>4</b>	<b>36</b>

**FEMALE**

	2005				2006			
	B	W	O	TOTAL	B	W	O	TOTAL
<b>PROFESSOR</b>	1	0	0	<b>1</b>	0	0	0	<b>0</b>
<b>ASSOCIATE PROFESSOR</b>	7	1	1	<b>9</b>	12	1	1	<b>14</b>
<b>ASSISTANT PROFESSOR</b>	2	4	0	<b>6</b>	2	4	0	<b>6</b>
<b>INSTRUCTOR</b>	0	0	0	<b>0</b>	0	0	0	<b>0</b>
<b>LECTURER</b>	4	1	0	<b>5</b>	0	1	0	<b>1</b>
<b>OTHER</b>	1	0	0	<b>1</b>	3	0	0	<b>3</b>
<b>TOTAL</b>	<b>15</b>	<b>6</b>	<b>1</b>	<b>22</b>	<b>17</b>	<b>6</b>	<b>1</b>	<b>24</b>

**Table 3.10: Average Salaries of Full-Time Instructional Faculty – By Rank and Gender**

**Academic Year 2006-2007 (as of Fall Semester, 2006)\***

<b>RANK</b>	<b>MALE</b>	<b>FEMALE</b>
Professor	\$69,796	N/A
Associate Professor	\$51,218	\$47,317
Assistant Professor	\$41,797	\$40,810
Lecturer	\$26,092	\$32,862

\*Data based on a regular 10 month contract period.



**Table 3.11: Distribution of Full-Time Instructional Faculty by Highest Degree Earned, Race and Gender**

Fall Semesters, 2005 and 2006

	MALE							
	2005				2006			
	Black	White	Other	TOTAL	Black	White	Other	TOTAL
<b>DOCTORATE</b>	12	8	5	<b>25</b>	15	12	5	<b>30</b>
<b>MASTERS</b>	4	1	0	<b>5</b>	5	1	0	<b>6</b>
<b>TOTAL</b>	<b>16</b>	<b>10</b>	<b>4</b>	<b>30</b>	<b>18</b>	<b>13</b>	<b>5</b>	<b>36</b>

	FEMALE							
	2005				2006			
	Black	White	Other	TOTAL	Black	White	Other	TOTAL
<b>DOCTORATE</b>	10	4	1	<b>15</b>	14	4	1	<b>19</b>
<b>MASTERS</b>	5	2	0	<b>7</b>	3	2	0	<b>5</b>
<b>TOTAL</b>	<b>15</b>	<b>6</b>	<b>1</b>	<b>22</b>	<b>17</b>	<b>6</b>	<b>1</b>	<b>24</b>

SOURCE: Banner Data

**Table 3.13: Instructional and Non-Instructional Full-Time and Part-Time Faculty: Fall Semester, 2004**

Division/Program	FT Faculty	PT Faculty <sup>1</sup>	FT (FTE)	PT (FTE) <sup>2</sup>	TOTAL FTE
<b>BUA</b>	2	2 (12 hrs)	2	1	3
<b>HFA</b>	19	10 (44 hrs)	19	3.6	22.68
<b>NSM</b>	19	7 (33 hrs)	19	2.7	21.7
<b>SSC</b>	12	13 (63 hrs)	12	5.2	17.2
<b>CORE<sup>3</sup></b>	0	7 (48 hrs)	0	4	4
<b>HONORS<sup>3</sup></b>	0	0(0 hrs)	0	0	0
<b>TOTAL</b>	<b>52</b>	<b>39 (200 hrs)</b>	<b>52</b>	<b>16.5</b>	<b>68.5</b>

<sup>1</sup>This column gives both the part-time faculty headcount and the number of credit hours taught by part-timers in the academic area

<sup>2</sup>Part-time FTEs are calculated by dividing the number of credit hours taught by part-time faculty by 12, which is a full-time teaching load.

<sup>3</sup>Since full-time faculty instructors are associated with a Division, not Core or Honors, it somewhat misleadingly appears that for these latter programs there are no faculty who are employed full-time. In actuality fifteen full-time faculty taught one or more Core courses and three full-time faculty taught Honors courses

Source: Banner Data

---

## **GENERAL INFORMATION**



## QUICK FACTS

- Tuition and Fees, Fall Semester, 2005:

Tuition	\$6,240
Activity Fee	\$190
Technology Fee	\$160

- Estimated Academic Year Cost for on-campus student, 2005-06:

Tuition and Fees	\$ 13,180
Room and Board	\$ 6,730
Books and Supplies	\$ 1,000
Transportation	\$ 1,800
Personal Expenses	\$ 2,000
<b>TOTAL</b>	<b>\$ 24,710</b>

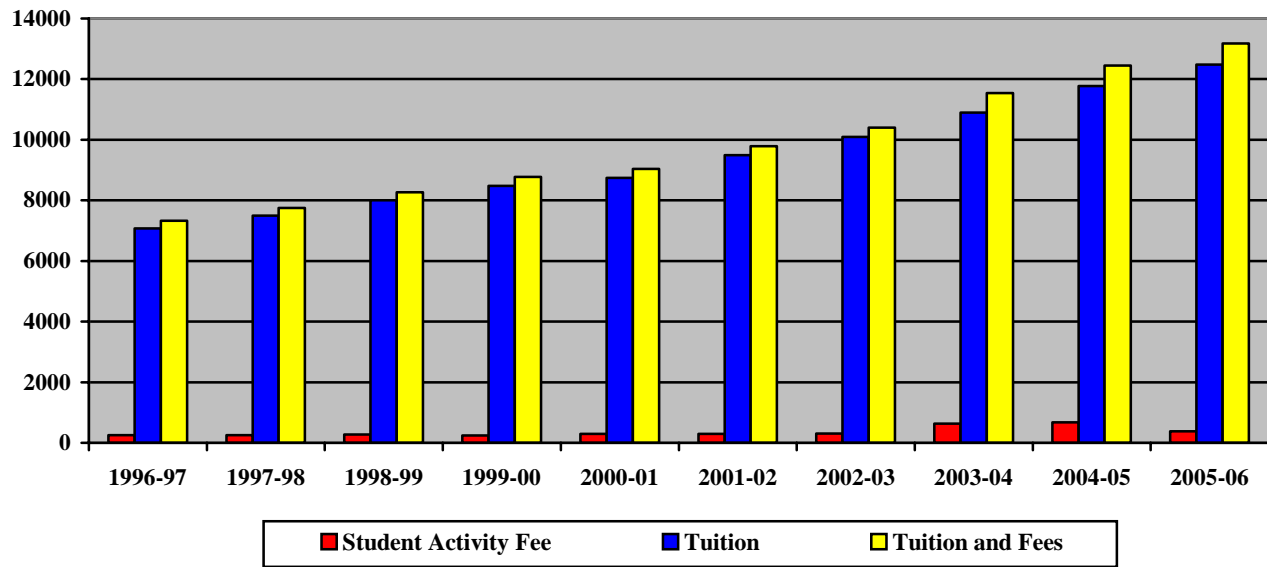
## TUITION AND FEES

**Table 4.1 Tuition and Student Activity Fee**

1996-97 through 2005-06

	Student Activity Fee	Technology Fee	Tuition	Tuition And Fees
2005-06	380	320	12,480	13,180
2004-05	360	320	11,770	12,450
2003-04	335	300	10,900	11,535
2002-03	310	-	10,090	10,400
2001-02	300	-	9,489	9,789
2000-01	300	-	8,740	9,040
1999-00	290	-	8,480	8,770
1998-99	270	-	8,000	8,270
1997-98	250	-	7,500	7,750
1996-97	250	-	7,078	7,328

**Figure 4.1 Tuition and Student Fees: 1996-97 through 2005-06**



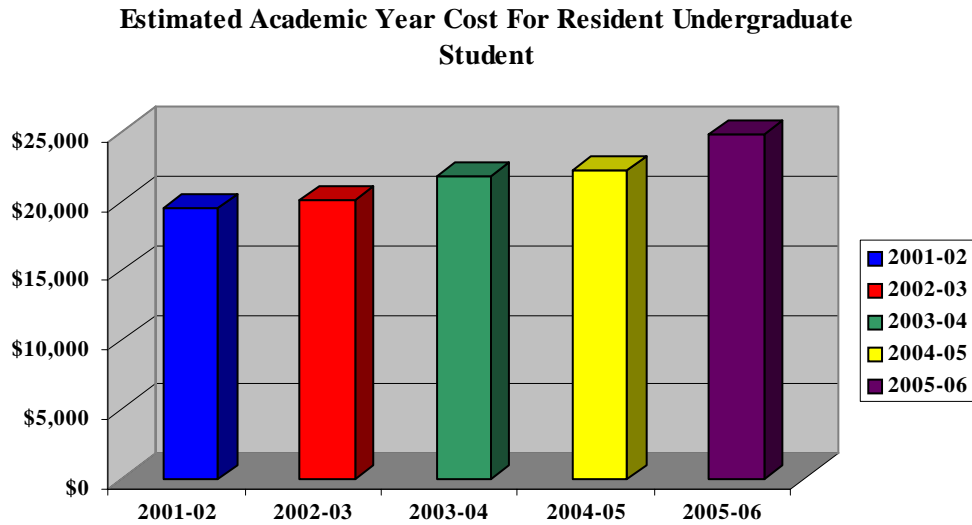
**Table 4.2 Estimated Academic Year Cost for Resident Undergraduate Student**

2001-2002 to 2005-06

	2002-03	2003-04	2004-05	2005-06	2006-07
<b>Tuition &amp; Fees</b>	\$10,400	\$11,535	\$12,450	\$12,480	
Room and Board	\$5,340	\$5,770	\$6,230	\$6,730	
Books and Supplies	\$1,000	\$1,000	\$1,000	\$1,000	
Transportation	\$1,450	\$1,450	\$1,000	\$1,800	
Personal Expenses	\$1,800	\$2,050	\$1,500	\$2,000	
<b>Total Estimated Cost</b>	<b>\$19,990</b>	<b>\$21,805</b>	<b>\$22,180</b>	<b>\$24,710</b>	<b>\$19,471</b>

**NOTE:** The estimated academic year cost is used to determine a student’s financial aid need

**Figure 4.2 Tuition and Student Fees: 2001-2002 to 2005-06**



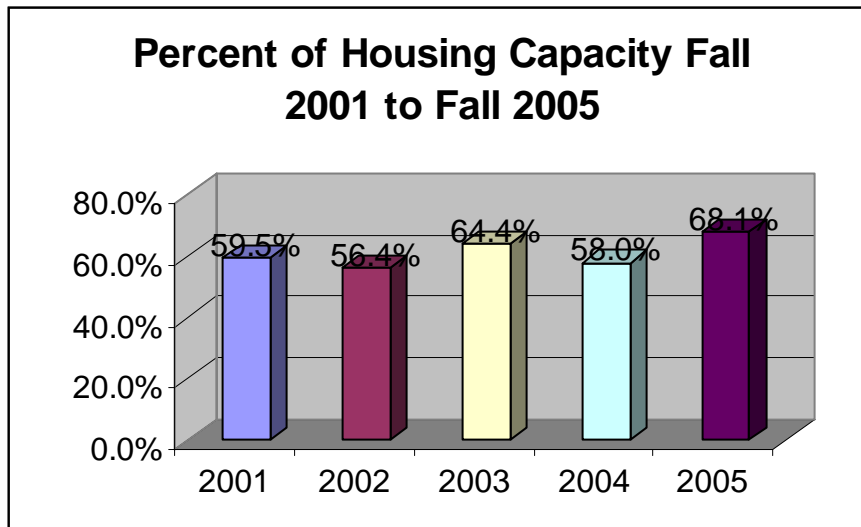
Source: Financial Aid; includes tuition, fees, room and board, books, transportation and personal expenses.

## Housing

**Table 4.3 Capacity and Occupancy: 2001-2005**

	<b>Crosthwaite</b>	<b>Jubilee</b>	<b>Livingstone</b>	<b>Shane</b>	<b>Total</b>
<b>Capacity</b>	<b>206</b>	<b>148</b>	<b>226</b>	<b>271</b>	<b>851</b>
Fall 2005 Occupancy	140	137	126	177	<b>580</b>
(% Capacity)	(24.1%)	(25.5%)	(21.7%)	(30.5%)	<b>(68.1%)</b>
<b>Capacity</b>	<b>206</b>	<b>146</b>	<b>220</b>	<b>324</b>	<b>896</b>
Fall 2004 Occupancy	140	117	63	206	<b>526</b>
(% Capacity)	(68.0%)	(80.0%)	(29.0%)	(64.0%)	<b>(58.0%)</b>
<b>Capacity</b>	<b>206</b>	<b>146</b>	<b>220</b>	<b>324</b>	<b>896</b>
Fall 2003 Occupancy	140	138	112	187	<b>577</b>
(% Capacity)	(68%)	(93%)	(51%)	(58%)	<b>(64.4%)</b>
<b>Capacity</b>	<b>206</b>	<b>146</b>	<b>220</b>	<b>324</b>	<b>896</b>
Fall 2002 Occupancy	90	131	137	147	<b>505</b>
(% Capacity)	(43.7%)	(89.7%)	(62.3%)	(45.4%)	<b>(56.4%)</b>
<b>Capacity</b>	<b>0</b>	<b>146</b>	<b>220</b>	<b>324</b>	<b>896</b>
Fall 2001 Occupancy	NA	124	163	246	<b>533</b>
(% Capacity)	NA	84.9%	74.1%	75.9%	<b>59.5%</b>

**Figure 4.2 Student Housing Occupancy**



**FACILITIES****Table 4.4 University Buildings by Square Footage**

<b>Building Name</b>	<b>Gross Square Footage</b>	<b>Year Constructed</b>	<b>Year of Last Major Renovation</b>
Adult Student Complex	5,800	1992	-
Basic College	7,925	1955	
Biology Research Lab	1,600	1993	
Boyd House	2,762	1921	1996
Burrus Hall	6,620	1935	
Carnegie	11,994	1907	1994
Cravath	24,520	1929	2002
Crosthwaite Residence Hall	47,086	1962	2002
DuBois	33,189	1959	
Faculty Apartments	41,784	1969	
Harris House	2,868	1876	
Honors Program Building	3,376	1992	-
Johnson Gymnasium	27,552	1946	-
Jubilee Residence Hall	55,392	1873	
Library and Learning Center	74,610	1969	-
Little Theatre	2,685	1888	
New Livingstone Residence hall	52,217	1962	-
Memorial Chapel	10,008	1892	1992
Park-Johnson	32,595	1953	2001
President's Residence	4,510	1969	-
Race Relations Institute	2,500	1945	-
Richardson Alumni House	1,690	1905	
Science Lab Building	3,600	1973	-
Shane Residence Hall	86,680	1973	
Adams K. Spence	31,238	1953	
Talley-Brady Chemistry Building	30,021	1931	1991
Van Vechten Gallery	7,460	1881	

## STUDENT AFFAIRS

**Table 4.5 Fraternities and Sororities: 2004-05**

Social Organization	Year Established On Campus
Fraternities	
OMEGA PSI PHI, Eta Psi Chapter	1926
ALPHA PHI ALPH, Alpha Chi Chapter	1927
PHI BETA SIGMA, Alpha Gamma Chapter	1927
Sororities	
ALPHA KAPPA ALPHA, Pi Chapter	1927
SIGMA GAMMA RHO, Alpha Upsilon Chapter	1945
ZETA PHI BETA, Kappa Gamma Chapter	1966

**Table 4.6 Student Organizations**

<u>Organization</u>	<u>Purpose</u>
---------------------	----------------

### Student Governing Organizations

Pan Hellenic Council	Governing body of Greek organizations
Residence Hall Councils	Represents residents of and organizes residence halls
Student Government Association	Provides for student involvement in the institution
Freshmen Class	
Sophomore Class	
Junior Class	
Senior Class	
Student Athletic Advisory Committee	

### Production Organizations

Fisk Forum	Student-run newspaper
The Spirit	Student publication of poetry and prose
Phi Mu Alpha Sinfonia	Men's Choral Group
Jazz Ensemble	Performance jazz group
Jubilee Singers	Fisk's premier performance group
Modern Black Mass Choir	Perform gospel works
Orchesis	Performing Dance Group
Oval	Student Year Book
Pep Squad	Promotes school spirit
Stagecrafters	Dramatic Performances
University Choir	Official Chapel Choir
Ladies of R.A.G.E. Dance Team	Performs dance routines primarily at half-time
WFSK Radio	Fisk University Operated
Fisk Television	Fisk University Operated

### Honor Societies

BETA KAPPA CHI	Recognizes Achievement and excellence in all sciences
MORTAR BOARD	Recognizes Support scholarship in all fields of study
PHI BETA KAPPA	Recognizes undergraduate achievement in liberal arts
SIGMA XI	Recognizes achievement in scientific research

**Table 4.6 Student Organizations – Continued**

<b>Organization</b>	<b>Organization</b>	
<b><u>Departmental Honoraries</u></b>		
ALPHA GAMMA MU	Foreign Languages	
ALPHA KAPPA DELTA	Sociology	
DELTA MU DELTA	Business	
LAMDA IOTA TAU	Literature	
PSI CHI	Psychology	
Pi Sigma Alpha	Political Science	
W.E.B. DuBois Honors Program	University Honors Program	
<b><u>Departmental and Professional Societies</u></b>		
Business Club	Promotes Application of business practices	
Pre-Health Careers Club	Promotes student interests in pursuing health careers	
Psychology Club	Promotes interaction between students and faculty in psychology	
Spanish Club	Promotes interest in the language and culture of Spain	
Tanner Art Society	Fosters support and interest in the arts	
Teacher Education Club	Promotes interest in careers in teaching	
French Club	Promotes interest in the language and culture of France	
Investment Club		
Sociology Club	Promotes interaction between students and faculty in sociology	
Political Science Club	Promotes interaction between students and faculty in political science	
Society of Physics Students	Promotes interaction between students and faculty in physics	
Alpha Phi Omega	National Service Organization	
Phi Mu Alpha, Zeta Rho Chapter (Sinfonic Club)	Professional Music Fraternity for Men	
National Organization for the Professional Advancement of Black Chemists and Chemical Engineers	Promotes interest in chemistry and related fields	
<b><u>Geographical Clubs and Organizations</u></b>		
Arkansas Club	Kentucky Club	
Chicagoland Club	St. Louis Club	
Dillard/Xavier Club	Michigan Club	
DC/MD/VA Club	Ohio Club	
Georgia Club	Tennessee Club	
<b><u>Religious and Spiritual Organizations</u></b>		
Baptist Student Union	Royal Life Ministry	
Chapel Assistants	Wesley Foundation	
Every Nation Campus Ministries	Y.E.S. Ministries (Young Excited and Saved)	
IMANI Praise Team (Religious Interpretive Dance Group)		
LIFT		
Mt. Zion College Ministry		
Muslim Students Association		
Nation of Islam Students		
Pentecostal Tabernacle Club		
<b><u>Political, Sports and Social Organizations</u></b>		
Big Sister Mentoring and Etiquette	Highlighter Club	Race Relations Student Org.
Honda Campus All-Star Challenge	Pep Squad	The Black Research Coalition
Cheerleaders	Kings of '07	White Gloves and Silver Spoons
NAACP	Perfect Gentlemen	Women of Perfection
Recycle Club	Anti Apathy	

---

**Cultural Organizations**

---

African Student Association  
Caribbean Student Union

International Student Association

---

**Other**

---

FUSA (Fisk University Student Ambassadors)  
Pre-Alumni Club  
Students In Free Enterprise (SIFE)  
Collegiate 100  
Target Hope  
Young Scholars Club

Admissions support group. Provides official University tours.  
Alumni-In-Training program  
Promotes interest in free enterprise



**INSTITUTIONAL ADVANCEMENT**

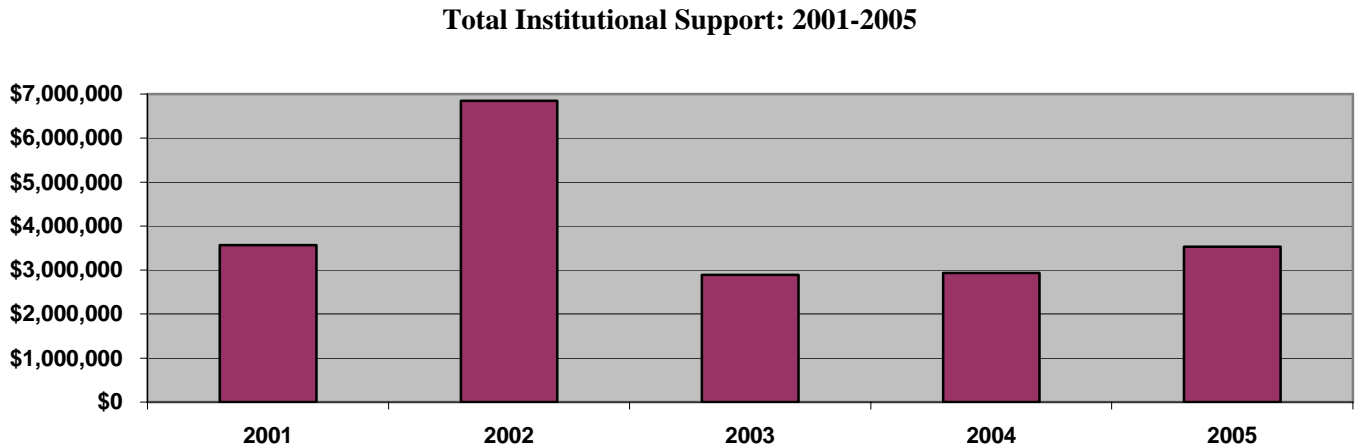
The Office of Institutional Advancement is responsible for generating gifts from the private sector to increase contributions and constituent support to accomplish the mission and goals of the University. This Office also serves as the liaison for all fundraising initiatives including the General Alumni Association.

**Sources of Support**

**Table 4.7 Sources of Major Institutional Support – Fiscal Years 2001-2005**

Source	2001	2002	2003	2004	2005
Alumni	1, 231, 605	877,299	794,899	622,708	773,217
Non-Alumni	459,909	4,232,950	321,935	383,198	144,029
Corporations	428,912	489,561	501,329	460,359	279,210
Foundations	657,451	178,212	536,065	177,050	485,992
Other	792,333	1,069,266	736,772	1,276,145	1,818,008
<b>TOTAL</b>	<b>3,570,210</b>	<b>6,847,288</b>	<b>2,891,000</b>	<b>2,937,558</b>	<b>3,531,705</b>

**Figure 4.7 Private Gifts and Grants – Fiscal Years 2001-2005**



**ALUMNI****Table 4.8 Geographical Distribution of Alumni – as of December 2006\***

<b>STATE</b>		<b>STATE</b>		<b>STATE</b>	
Alabama	230	Maine	5	Oregon	12
Alaska	3	Maryland	372	Pennsylvania	160
Arizona	32	Massachusetts	80	Rhode Island	2
Arkansas	45				
California	556	Michigan	299	South Carolina	99
Colorado	28	Minnesota	30	Tennessee	1178
Connecticut	49	Mississippi	83	Texas	393
Delaware	30	Missouri	175	Utah	0
District of Columbia	152	Montana	1	Vermont	0
Florida	309	Nebraska	10	Virginia	202
Georgia	629	Nevada	25	Washington	27
Hawaii	11	New Hampshire	2	West Virginia	3
Idaho	0	New Jersey	163	Wisconsin	42
Illinois	509	New Mexico	5	Wyoming	1
Indiana	163	New York	323		
Iowa	6	North Carolina	167		
Kansas	19	North Dakota	0	Puerto Rico	0
Kentucky	78	Ohio	395	Virgin Island	23
Louisiana	76	Oklahoma	51		
				<b>TOTAL</b>	<b>7253</b>

\*Data based on the number of valid alumni addresses.

**Table 4.9 Foreign Country Residence of Alumni, as of December 2006\***

<b>COUNTRY</b>	<b>NUMBER</b>
APO	2
Bahamas	48
Bermuda	2
British West Indies	0
Canada	4
China	5
England	2
Germany	3
Jamaica	2
Japan	1
Mexico	0
Nigeria	1
South Africa	1
Sweden	1
Trinidad and Tobago	1
West Indies	3
Zimbabwe	1
<b>TOTAL</b>	<b>77</b>

\*Data based on the number of valid alumni addresses.

**Table 4.10 Alumni Clubs, as of December 2006**

<b>LOCATION</b>	<b>STATE</b>	<b>CLUB PRESIDENT/CONTACT</b>
Atlanta	GA	Linda L. Smith '81
Austin	TX	Trent Spears '02
Nassau	Bahamas	Judson F. Eneas, MD '67
Baltimore	MD	Peter Buchanan '54
Birmingham	AL	Newstell Dowdell '53
Chicago	IL	Eleta J. Murray '74
Cincinnati	OH	Anna E. Hutchinson '96
Cleveland	OH	Robert Wiley '76
Dallas	TX	Vincent Leal '76
Detroit	MI	John Carruthers '73
Gary/NW Indiana	IN	Chester Bell '52
Hampton Roads Club	VA	George Tillerson, III '67
Houston	TX	Dr. Harold B. Crawford '65
Huntsville	AL	David Points '77
Indianapolis	IN	Raymond O. Pierce '51
Los Angeles	CA	Elroy Bond '57
Louisville	KY	Cheri Bryant Hamilton '72
Memphis	TN	Jeanette McKinley '96
Miami	FL	Brenda Benedict Lee '68
Milwaukee	WI	Helen Kelley '52
Minneapolis	MN	Valton Henderson '77
Nashville	TN	Faye Weaver '67
New York/New Jersey	NY/NJ	Karen Maynard '82
Oakland/San Francisco Area	CA	Alphonso Campbell '54
Philadelphia	PA	Vivian B. Gonzalez '69
San Diego	CA	Jean Colston '63
Washington DC	MD	Gloria Elliott '72
Executive Director		Joan A. Bahner '64

**Table 4.13 General Alumni Association of Fisk University – Board of Trustees 2005****OFFICERS****Chairman**

Denise Billye Sanders, JD '74

**Vice Chair**

Linda Brown Coleman, Ph.D. '70

**Treasurer**

Harold W. Kelley '58

**General Counsel**

Allegra Montgomery Walker, JD '93

**Secretary**

Janis Edwards Marley '68

**Parliamentarian**

Andrew L. Brown, Jr. '85

**BOARD**

Denise C. Bridgeford-Lightner, MD '86

Andrew L. Brown Jr. '85

Linda Brown Coleman, Ph.D. '70

Tena Walton Gardner '65

Vivian Gonzalez '69

P. Gregory Johnson '70

Grace Kelly-Driver '55

Sandra Lawson, Ph.D. '67

Sharon Wilson Murphy '72

Donna Daniels Rice '64

William E. Settle '77

Linda L. Smith '81

Genevieve M. Stewart '70

Samuel L. Williams, Jr. '68

Stephanie V. Williams '72

---

**FINANCES**

## **HIGHLIGHTS OF FY 2004**

### **FINANCIAL PROFILE**

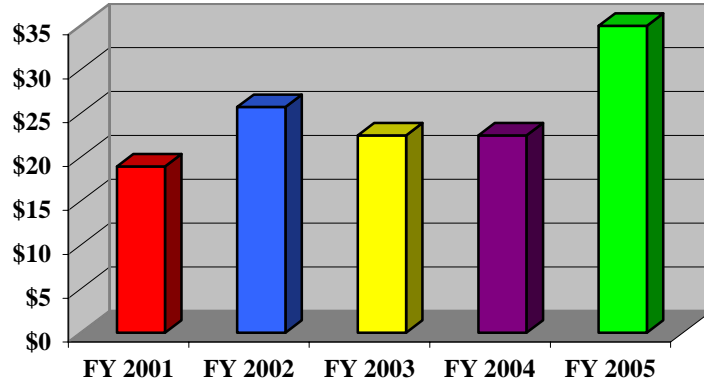
- Total current fund revenues for FY 2003 were approximately \$22.5 million, down 12% from 2002.
- Government grants and contracts for FY 2003 were up 23% from FY 2001 and private gifts and grants were down 51% for the same period. In FY 2003, net tuition and fees was \$6.3 million, compared with \$6.1 in FY 2001.
- Education and general (E & G) revenues per student were \$22,791 for FY 2003, down \$5,600 from FY 2002 level.
- Tuition and Fees (32%) and private gifts and grants (30%) combine for about two-thirds (62%) of all revenues for 2003.
- Total current fund expenditures were \$21.1 million for FY 2003, down 8% from FY 2002.
- Academically related expenditures for 2003 totaled 62% of E & G expenditures: cost of instruction, 39%; research, 14%; and academic support, 9%. The five-year average for research is 19% of E & G expenditures.
- Net auxiliary enterprise revenue for FY 2003 was \$110,115

## CURRENT FUND REVENUES, EXPENDITURES AND BALANCES

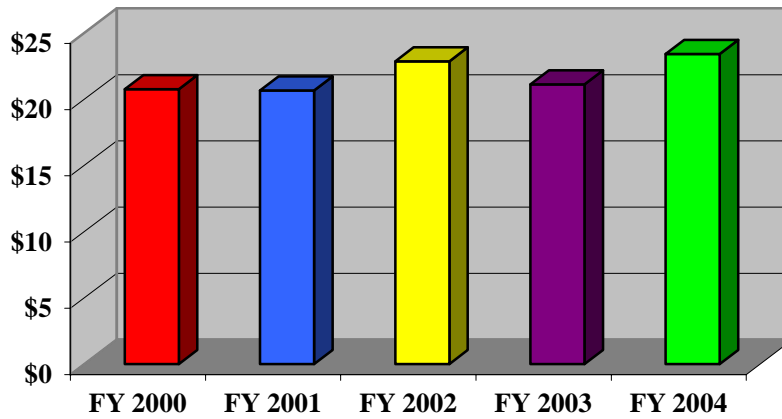
FY 2000 through FY 2004

Figure 5.1 Current Fund Revenues, Expenditures and Balances

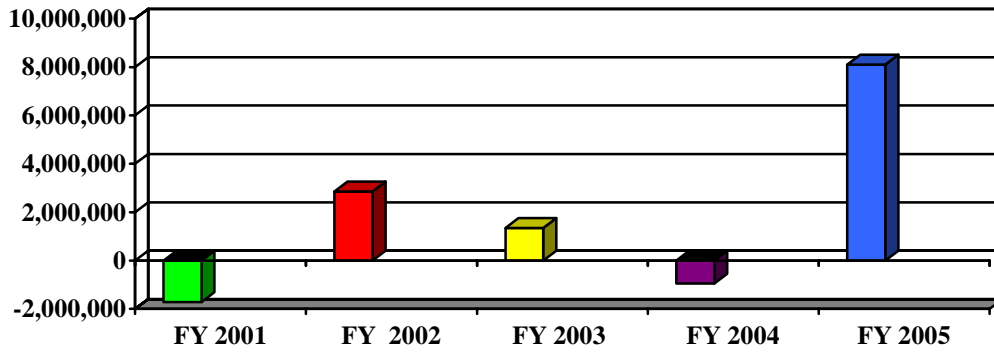
### TOTAL CURRENT FUND REVENUES



### TOTAL CURRENT FUND EXPENDITURES



**TOTAL CURRENT FUND BALANCE**



**Table 5.1 Current Fund Revenues, Expenditures and Balances**

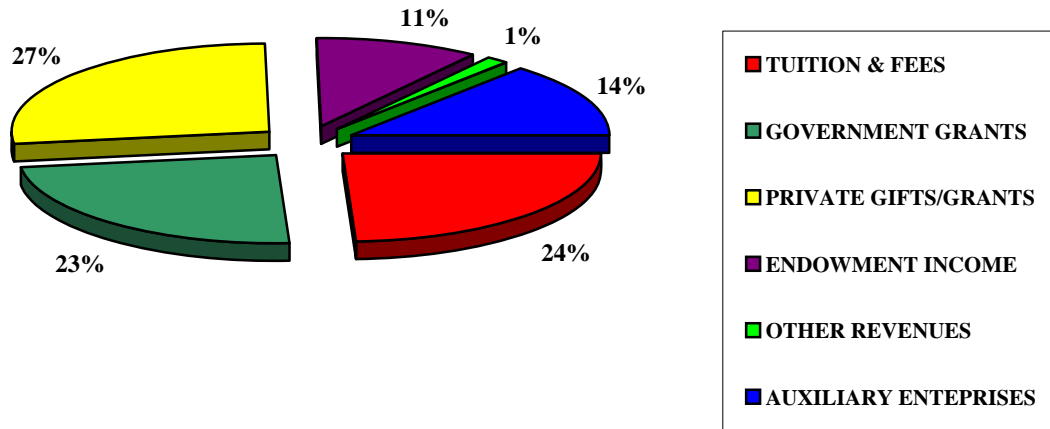
	<b>FY 2001</b>	<b>FY 2002</b>	<b>FY 2003</b>	<b>FY 2004</b>	<b>FY 2005</b>
<b>TOTAL CURRENT FUND REVENUES</b>	\$18,941,372	\$25,717,380	\$22,472,189	\$22,462,503	\$34,958,704
<b>TOTAL CURRENT FUND EXPENDITURES</b>	\$20,654,495	\$22,855,248	\$21,124,685	\$23,408,657	\$26,857,225
<b>CURRENT FUND BALANCE</b>	(\$1,713,123)	\$2,862,132	\$1,347,504	(\$946,154)	\$8,101,479

**SOURCE: Financial Affairs**

## CURRENT FUND REVENUES

FY 2001 through FY 2005

**Figure 5.2 Current Fund Revenues, Five-Year Average: FY 2001-FY 2005**



**Table 5.2 Current Fund Revenues**

	<b>FY 2001</b>	<b>FY 2002</b>	<b>FY 2003</b>	<b>FY 2004</b>	<b>FY 2005</b>
<b>TUITION &amp; FEES</b>	\$3,877,536	\$6,083,519	\$6,299,054	\$6,935,345	\$7,212,667
<b>GOVERNMENT GRANTS</b>	5,690,938	4,486,459	5,535,492	5,831,815	\$7,782,769
<b>PRIVATE GIFTS/GRANTS</b>	6,412,283	11,962,184	5,830,833	4,750,259	\$4,750,259
<b>ENDOWMENT INCOME</b>	(1,057,058)	41,034	1,387,208	994,122	\$11,798,417
<b>OTHER REVENUES</b>	688,270	309,678	387,983	300,217	0
<b>TOTAL EDUCATION &amp; GENERAL REVENUES</b>	<b>\$15,611,969</b>	<b>\$22,882,874</b>	<b>19,440,570</b>	<b>18,811,758</b>	<b>\$21,544,112</b>
<b>AUXILIARY ENTERPRISES</b>	\$3,329,403	\$2,834,506	\$3,031,619	\$3,650,745	\$3,388,076
<b>TOTAL CURRENT FUND REVENUES</b>	<b>\$18,941,372</b>	<b>\$25,717,380</b>	<b>\$22,472,189</b>	<b>\$22,462,503</b>	<b>\$34,958,704</b>

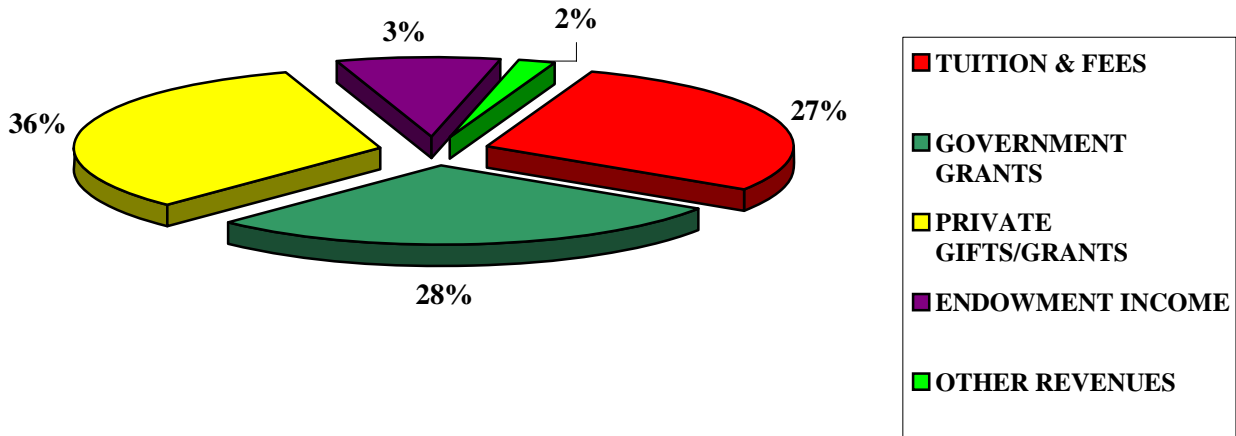
**SOURCE: Financial Affairs**



## EDUCATION AND GENERAL REVENUES

FY 2001 through FY 2005

**Figure 5.3 Education and General Revenues, Five-Year Average: FY 2001-FY 2005**



**Table 5.3 Percent Distribution Of Total Educational And General Revenues:**

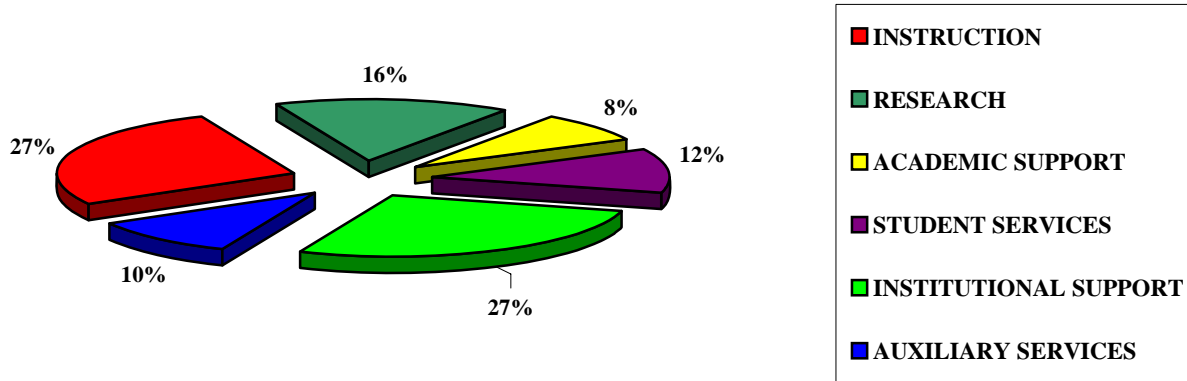
	FY 2001	FY 2002	FY 2003	FY 2004	FY 2005
TUITION & FEES	25%	27%	32%	37%	23%
GOVERNMENT GRANTS	36%	20%	28%	31%	25%
PRIVATE GIFTS/GRANTS	41%	52%	30%	25%	15%
ENDOWMENT INCOME	-7%	0%	7%	5%	37%
OTHER REVENUES	4%	1%	2%	2%	0%
<b>TOTAL EDUCATION &amp; GENERAL REVENUES</b>	<b>\$15,611,969</b>	<b>\$22,882,874</b>	<b>19,440,570</b>	<b>18,811,758</b>	<b>\$31,544,112</b>
<b>FULL YEAR FTE ENROLLMENT</b>	<b>861</b>	<b>806</b>	<b>853</b>	<b>879</b>	<b>871</b>
<b>E&amp;G REVENUES PER STUDENT</b>	<b>\$18,132</b>	<b>\$28,391</b>	<b>\$22,791</b>	<b>\$21,401</b>	<b>24,735</b>

SOURCE: Financial Affairs

## CURRENT FUND EXPENDITURES

FY 2000 through FY 2004

**Figure 5.4 Current Fund Expenditures, Five-Year Average: FY 2000 - FY 2004**



**Table 5.4 Current Fund Expenditures**

	<b>FY 2001</b>	<b>FY 2002</b>	<b>FY 2003</b>	<b>FY 2004</b>	<b>FY 2005</b>
<b>INSTRUCTION</b>	\$5,953,740	\$6,226,239	\$7,139,481	\$5,536,460	\$5,817,705
<b>RESEARCH</b>	3,708,986	3,401,923	2,516,881	3,291,193	\$5,711,061
<b>ACADEMIC SUPPORT</b>	1,096,190	1,149,324	1,598,815	2,475,797	\$2,917,228
<b>STUDENT SERVICES</b>	2,131,265	2,540,941	2,550,763	2,972,681	\$3,270,260
<b>INSTITUTIONAL SUPPORT</b>	5,447,269	6,506,671	4,397,241	7,497,297	\$7,424,819
<b>SCHOLARSHIPS/FELLOWSHIPS</b>	-	-	-	-	-
<b>TOTAL E &amp; G EXPENDITURES</b>	<b>18,337,450</b>	<b>19,825,098</b>	<b>18,203,181</b>	<b>21,773,428</b>	<b>\$25,141,073</b>
<b>AUXILIARY SERVICES</b>	2,317,046	3,030,150	2,921,504	1,635,229	\$1,716,152
<b>TOTAL CURRENT FUND EXPENDITURES</b>	<b>\$20,654,496</b>	<b>\$22,855,248</b>	<b>\$21,124,685</b>	<b>\$23,408,657</b>	<b>\$26,857,225</b>

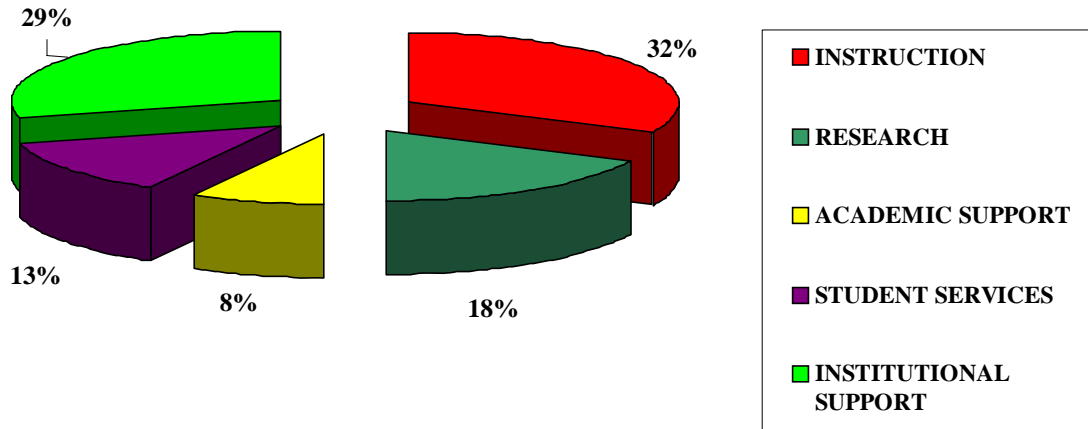
**SOURCE: Financial Affairs**

## PERCENT DISTRIBUTION OF EDUCATION AND GENERAL EXPENDITURES

FY 2001 through FY 2005

**Figure 5.5: Percent Distribution of Education and General Expenditures**

**Five-Year Average: FY 2001 - FY 2005**



**Table 5.5 Percent Distribution of Total Education and General Expenditures**

	FY 2001	FY 2002	FY 2003	FY 2004	FY 2005
INSTRUCTION	32%	31%	39%	25%	23%
RESEARCH	20%	17%	14%	15%	23%
ACADEMIC SUPPORT	6%	6%	9%	12%	12%
STUDENT SERVICES	12%	13%	14%	14%	13%
INSTITUTIONAL SUPPORT	30%	33%	24%	34%	30%
SCHOLARSHIPS/FELLOWSHIPS	-	-	-	-	-
<b>TOTAL E &amp; G EXPENDITURES + MT</b>	<b>18,337,450</b>	<b>19,825,098</b>	<b>18,203,181</b>	<b>21,773,428</b>	<b>\$25,141,073</b>

**SOURCE: Financial Affairs**

Year Ended June 30, 2005

**STATEMENTS OF CURRENT FUNDS, REVENUES,  
EXPENDITURES, AND OTHER CHANGES**

(With Comparative Totals for FY2004)

**Table 5.6 Statements of Current Funds, Revenues, Expenditures, and Other Changes**

<b>REVENUES:</b>		<b>2004</b>	<b>2005</b>
	<b>TUITION AND FEES***</b>	6,935,345	
	<b>PRIVATE GIFTS AND GRANTS</b>	4,750,259	
	<b>GOVERNMENT GRANTS/CONTRACTS</b>	5,831,815	
	<b>INVESTMENT INCOME</b>	994,122	
	<b>SALES/AUXILIARY ENTERPRISES</b>	3,650,745	
	<b>OTHER INCOME</b>	300,217	
	<b>TOTAL REVENUES</b>	<b>\$22,462,503</b>	

<b>EXPENSES:</b>		<b>2004</b>	<b>2005</b>
	<b>INSTRUCTION</b>	5,536,460	
	<b>RESEARCH</b>	3,291,193	
	<b>ACADEMIC SUPPORT</b>	2,475,797	
	<b>STUDENT SERVICES</b>	2,972,681	
	<b>INSTITUTIONAL SUPPORT</b>	7,497,297	
	<b>EXPENSES/AUXILIARY ENTERPRISES</b>	1,635,229	
	<b>TOTAL EXPENSES</b>	<b>\$23,408,657</b>	
	<b>CHANGE IN ASSETS</b>	<b>(\$946,154)</b>	

**SOURCE: FY 2004 and FY 2005 Audit Reports**

\*\*\* Tuition and fees do not include scholarships and fellowships, which were \$2,573,203 for 2003 and \$ for 2004