

DECEMBER
2005

OFFICE OF INSTITUTIONAL RESEARCH

FISK UNIVERSITY

The Fact Book 2005-2006

Fisk University
Nashville, TN 37208-3051

INTRODUCTION..... 1

QUICK FACTS..... 2

A STATEMENT OF PURPOSE 3

BOARD OF TRUSTEES..... 4

HIGHLIGHTS OF FISK’S HISTORY 5

PRESIDENTS OF FISK UNIVERSITY 7

ADMINISTRATION 8

ACADEMIC CALENDAR 10

STUDENT AND ACADEMIC PROGRAM PROFILE 11

QUICK FACTS..... 12

ADMISSIONS 13

FINANCIAL AID..... 18

ENROLLMENT..... 20

MAJOR PROGRAMS..... 24

CREDIT HOURS..... 25

CLASS SIZE..... 29

ACADEMIC ACHIEVEMENT 30

DISTRIBUTION OF GRADES..... 32

DEGREES CONFERRED 33

RETENTION AND GRADUATION RATES..... 38

FACULTY/STAFF PROFILES..... 39

QUICK FACTS..... 40

FISK UNIVERSITY INSTRUCTIONAL FACULTY 41

RESEARCH FACULTY AND STAFF..... 45

FACULTY STATISTICS..... 46

GENERAL INFORMATION..... 53

Housing 57

HOUSING..... 57

STUDENT AFFAIRS 59

INSTITUTIONAL ADVANCEMENT 62

ALUMNI..... 63

FINANCES 65

FINANCIAL PROFILE 66
CURRENT FUND REVENUES, EXPENDITURES AND BALANCES 66
CURRENT FUND REVENUES 68
EDUCATION AND GENERAL REVENUES 69
CURRENT FUND EXPENDITURES 70
EDUCATION AND GENERAL EXPENDITURES -PERCENT DISTRIBUTION 71
STATEMENTS OF CURRENT FUNDS, REVENUES,..... 72
EXPENDITURES, AND OTHER CHANGES 72

INTRODUCTION

The Fisk University Fact Book is an annual compilation of academic and financial statistical data about the university. It provides a snapshot of our operations that can be used to evaluate institutional effectiveness. The academic data is concentrated on the fall semester of the year, since this is the semester of record for most external reports. Certain functions, such as graduation and financial reporting, lend themselves to being expressed for the entire academic and fiscal years and are so reported

QUICK FACTS

Fisk College and Normal School

- The Fisk College and Normal School opened for classes January 9, 1866.
-

Fisk University

- Fisk School was incorporated as Fisk University August 12, 1867.
 - The original Fisk Jubilee Singers departed Nashville October 6, 1871, to raise money for the University.
 - Jubilee Hall was formally dedicated in 1876, becoming the first permanent structure built in America for educating African Americans.
 - In 1930, Fisk became the first historically black college to gain accreditation by the Southern Association of Colleges and Schools.
 - Professional Accreditations:
 - 1. American Chemical Society
 2. National Association of Schools of Music
 3. Council of Graduate Schools
 4. International Assembly for Collegiate Business Education
 - Fisk University's Academic Calendar is based on the semester system.
 - Degrees offered are:
 - Bachelor of Arts
 - Bachelor of Music
 - Bachelor of Science
 - Master of Arts
-

Fisk University Rankings

U.S. News and World Report in its 2006 Edition of "America's Best Colleges" ranks Fisk University among the Tier 3 National Liberal Arts Colleges. The National Science Foundation ranks Fisk University as one of the highest per capita producers in the nation for the number of its African American Baccalaureates who go on to earn the Doctorate in the Natural Sciences. For the eighth consecutive year, Fisk is included in the Princeton Review "Top 361 Colleges and Universities." Newsweek Magazine also featured Fisk in its annual list of the "Hottest 25 Colleges and Universities".

A STATEMENT OF PURPOSE

Since its founding in 1866, Fisk has committed itself to providing an excellent liberal arts education for students irrespective of race, gender, and religion. While from its earliest days the university has exhibited a concern for the needs and problems of black Americans, it has always been an academic haven to all citizens of America and the world. Indeed, of the eight members of the first graduating class, two were white and five were women. Fisk University's traditional mission of leadership development and support for pioneering research is conducted in an atmosphere of respect for ethnic diversity.

As the twenty-first century begins, opportunities for leaders from all ethnic segments of America are increasing. The cultural landscape of our world demands leaders who possess the skill, knowledge, vision and values that enable them to work effectively with others. Historically black institutions are among the best examples of colleges and universities that preserve cultural heritage, offer academic excellence and present leadership opportunities to black students and other ethnic groups.

THE MISSION

Fisk University provides a rich academic experience steeped in the liberal arts tradition. Our faculty and students exhibit a passion for learning and personal growth. We are committed to ethical leadership and engagement in our local and global communities.

BOARD OF TRUSTEES

Table 1.1 Members of the Board of Trustees (2005-06 Academic Year)

Member	Resident City
Mrs. Paula A. Banks	Chicago, IL
Mrs. Carolyn J. Booker	Atlanta, GA
Mrs. Barbara L. Bowles	Chicago, IL
Ms. Marshelle I. Brooks (student representative)	Nashville, TN
Mrs. Alma Arrington Brown	Bethesda, MD
Mrs. Carolyn Hogan Byrd	Atlanta, GA
Mr. Anthony R. Chase	Houston, TX
Mr. Mike Curb	Nashville, TN
Dr. John Hope Franklin (Emeritus)	Durham, NC
Mr. Reynaldo P. Glover	Chicago, IL
Mr. Ernest G. Green	Washington, DC
Mrs. Ann B. Holliday	Wilmington, DE
Dr. Adrienne Lash Jones	Shaker Heights, OH
Mr. Gregory M. Makowski	Totowa, NJ
Mr. Robert L. Mallett	New York, NY
Mrs. Leatrice B. Mckissack	Nashville, TN
Dr. Joan Thompson Mobley, M.D.	Wilmington, DE
Mr. Robert W. Norton	Savannah, GA
Mrs. Hazel R. O'Leary	Nashville, TN
Dr. Sheila Peters (faculty representative)	Nashville, TN
Mrs. Donna Daniels Rice	Columbia, MD
Mr. Michael D. Shmerling	Nashville, TN
Mr. Irby C. Simkins, Jr.	Nashville, TN
Mr. Cal Turner	Nashville, TN
Mr. Samuel L. Williams, Jr.	Adelphi, MD
Dr. Robert Wingfield (faculty representative)	Nashville, TN

HIGHLIGHTS OF FISK'S HISTORY

Table 1.2 Selected Events from Fisk's History

Year	Event
1865	John Ogden, the Reverend Erastus Milo Cravath, and the Reverend Edward P. Smith established the Fisk School in Nashville.
1866	On January 9, Fisk convened its first classes.
1867	On August 12, Fisk School was incorporated as Fisk University.
1871	On October 6, the original Jubilee Singers departed Fisk to raise money.
1873	January 1, groundbreaking ceremony held for Jubilee Hall.
1875	Reverend E. M. Cravath became the first President of Fisk University. Fisk graduated its first class consisting of eight students that included two women and two whites.
1876	Jubilee Hall was formally dedicated.
1878	Fisk's first Missionaries, Albert P. Miller and Andrew E. Jackson, graduated. Upon leaving the Mendi Mission, Miller in a short address left Fisk its motto: "Her Sons and Daughters Are Ever On The Alter."
1880	The Mozart Society, the first Musical Organization in Tennessee, was formed. In later years, the Society becomes the Fisk University Choir.
1882	Livingston Hall was erected through a \$60,000 gift by Mrs. Valerie Stone.
1883	The Fisk Herald began.
1884	The Fisk Alumni Association was founded.
1885	The Music Department was created.
1888	W.E.B. DuBois graduated.
1889	The Gymnasium and workshop (presently Van Vechten Art Gallery) was created.
1891	Bennett Hall, named from the Reverend H.S. Bennett, was elected at the cost of \$25,000.
1892	Fisk Memorial Chapel was built with a legacy of \$25,000 from the estate of Clinton B. Fisk.
1893	First Football Team was organized.
1901	James G. Merrill became the second President of Fisk, in June.
1906	Chase Hall (Science Building) was erected on the site where the statue of W.E.B. DuBois now stands.
1908	The Carnegie Library (now the Academic Building) was erected.
1909	George A. Gates was elected third President of Fisk.
1915	Fayette A. McKenzie became the fourth President of Fisk.
1925	Fisk students strike against the Administration policies of President McKenzie on February 4.
1926	Thomas E. Jones was selected the fifth President of Fisk.
1927	The Fisk News was established as an Alumni Publication; Fisk celebrated its first Homecoming.
1930	Fisk became the first Historically Black College to gain accreditation by the Southern Association of Colleges and Schools.

Table 1.2 Selected Events from Fisk's History - Continued

Year	Event
1931	James Weldon Johnson was appointed to the Adam K. Spence Chair in Creative Writing.
1945	Effective July 1946, President Jones resigns.
1946	Charles S. Johnson was appointed the sixth and first black President of Fisk.
1948	The Fisk Forum, the student newspaper, was established.
1949	Georgia O'Keefe presented Fisk with the Alfred Stieglitz collection of Modern Art.
1952	Fisk became the first black college to be granted a charter to establish a chapter of the Phi Beta Kappa Honor Society.
1956	Charles S. Johnson dies, October 28.
1957	Stephen J. Wright was elected the seventh President of Fisk.
1960	The Nashville sit-in movement was organized by John Lewis, '67.
1966	Fisk held her Centennial Celebration.
1967	James R. Lawson was selected the eighth President of Fisk.
1969	The Modern Black Mass Choir was organized.
1972	Fisk attained an enrollment of 1559, the largest in the college's history.
1975	James Lawson resigned as President.
1977	Walter J. Leonard became the ninth President of Fisk.
1978	Fisk's entire campus was officially designated an historical district by the U.S. Department of Interior.
1980	The name, Jubilee Singers, became a registered trademark.
1981	The Jubilee Singers Memorial Bridge opened.
1984	Walter Leonard resigned as President of Fisk; Henry Ponder became the tenth President.
1988	Cecilia N. Adkins, '43, became the first woman elected chair of the Fisk University Board of Trustees.
1990	Fisk begins restoration of historic buildings after receiving an initial United States Congressional Grant.
1991	Fisk breaks ground for the Honors Building, the first new building in twenty years.
1996	The Historic Fisk Race Relations Institute is reestablished with a grant from the W.K. Kellogg Foundation; Henry Ponder resigns as President of Fisk.
1997	Rutherford H. Adkins became the eleventh President of Fisk.
1998	President Adkins dies February, after serving only eight months.
1999	John L. Smith, Jr. became the twelfth President of Fisk.
2001	Carolynn Reid-Wallace becomes the thirteenth President of Fisk.
2003	Carolynn Reid-Wallace resigns as President of Fisk.
2004	Charles Fuget became interim President of Fisk.
2004	Hazel O'Leary became the fourteenth president of Fisk.

Source: Library, 1997 Homecoming Committee

PRESIDENTS OF FISK
UNIVERSITY

Erastus M. Cravath
1875 – 1900

James G. Merrill
1901 – 1908

George A. Gates
1909 – 1912

Fayette A. McKenzie
1915 – 1925

Thomas E. Jones
1926 – 1945

Charles S. Johnson
1946 – 1956

Stephen J. Wright
1957 – 1966

James R. Lawson
1967 – 1975

Walter J. Leonard
1977 – 1984

Henry Ponder
1984 – 1996

Rutherford H. Adkins
1997 – 1998

John L. Smith, Jr.
1999 – 2001

Carolynn Reid-Wallace
2001 – 2003

Hazel R. O'Leary
2004 - Present

Table 1.3: Senior Administrators (Fall 2005)

Senior Administrators	AREA
	Office of the President
Hazel R. O'Leary	President
Stacey Barrett	University Counsel & Secretary to the Board
	Office of Financial Affairs
Amanda Fowler	VP for Finance and Chief Financial Officer
Spence Maners	Comptroller
	Office of Administrative Services
Marie Lang	VP for Administrative Services
Jim Adams	Director, Facilities & Grounds
	INSTITUTIONAL ADVANCEMENT
Joan Bahner	Vice President for Institutional Advancement
Adrienne Latham	Director of Alumni Affairs
Danielle Edwards	Director of Advancement Communications
Darryl Griffin	Director for Corporate & Foundation Relations
Catherine Brown	Senior Gifts Processor
Hazel Coleman	Annual Funds Director
Jennifer Gamble	Prospect Research Manager
Patrick Johnson	Director of Planned Giving and Major Gifts
Lolita Toney	Director Development Systems and Stewardships
	Office of the Provost
	Academic Leadership Team
W. Eugene Collins	Associate Provost
Reavis Mitchell	Associate Provost
Sheila Peters	Associate Provost
Alfredo Cambroner	Director, Business Administration Division
Adam Myer	Director, Humanities & Fine Arts Division
W. Eugene Collins	Director, Natural Science & Mathematics Division
Reavis Mitchell	Director, Social Science Division
Princilla Evans	Director, Graduate Studies
James Quirin	Director, W.E.B. DuBois Honors Program
Sheila Peters	Director, Race Relations Division
Enrique Silberman	Director, NASA Research Center
Victor Simmons	Curator, University Galleries
Jessie C. Smith	Director, Library & Learning Resource Center
Alicia Gibbs	Associate Registrar
Karen Martin	Director of Sponsored Programs
	Office of Information Services
John Springer	Chief Information Officer, VP for Institutional Assessment
Bobby Harris	Dir. of Information Technology Services

Tsehay Demeke	Coordinator of Instructional Technology
	Student Affairs
Cheryl Garner	Dean of Student Affairs
Jason Meriwether	Associate Dean of Student Affairs
Echelle Eady	Director, Career Planning and Placement
Lynwood Berry	Director, Orientation & Student Activities
Larry Glover	Director of Athletics
	Office of Admission and Financial Aid
Keith Chandler	Director of Admission
Damien Jackson	Director of Financial Aid
	NASA Research Center
Enrique Silberman	Director, NASA Research Center
W. Eugene Collins	Associate Director, Research Center

Table 1.4 Academic Calendar Overview, Fall 2005 – Fall 2006**FALL SEMESTER 2005**

Classes Begin	Monday	August 29
Thanksgiving Vacation	Wednesday - Friday	November 23-25
Classes End	Tuesday	December 13
Final Exams End	Tuesday	December 20

SPRING SEMESTER 2006

Classes Begin	Monday	January 9
Spring Vacation	Monday- Friday	March 6 -10
Classes End	Wednesday	April 26
Final Exams End	Friday	May 5
Commencement	Monday	May 8

FALL SEMESTER 2006

Classes Begin	Monday	August 28
Fall Break	Monday-Tuesday	October 23-24
Thanksgiving Vacation	Wednesday – Friday	November 22-24
Classes End	Tuesday	December 12
Final Exams End	Thursday - Tuesday	December 14-19

STUDENT AND ACADEMIC PROGRAM PROFILE

QUICK FACTS

Students

- Average SAT for Entering Freshmen, Fall Semester 2005:

<u>Verbal</u>	<u>Math</u>	<u>Combined</u>
491	480	971

- Average ACT for All Entering Freshmen, Fall Semester 2005: Composite = 20.0
- Average High School GPA for Entering Freshmen, Fall Semester 2005: **3.02**
- Admissions, Fall Semester 2005:

	Number Applied	Number Accepted	Accepted Yield	Number Enrolled	Enrollment Yield
Freshman	1643	1310	79.3%	214	16.3%
Transfer	68	62	91.1%	32	51.6%

- Students at Fisk represent 36 states, The District of Columbia, The U.S. Virgin Islands, and 6 foreign countries.
- Fall Semester 2005 Headcount: Full-Time: 844
Part-Time: 76
Total: 920

Full-Time Equivalent (FTE) Students 887.5

- Degrees Conferred by Division, Academic Year 2004-05:

	Bachelors	Masters
Business Administration	27	---
Humanities and Fine Arts	24	---
Natural Science and Math	25	5
Social Science	64	3
Total	140	8

- First-to-Second year retention: 86.5%
- Graduation Rates:(May 2005 Graduation)

Four-Year Rate	41%
Five-Year Rate	52%
Six-Year Rate	59%

ADMISSIONS

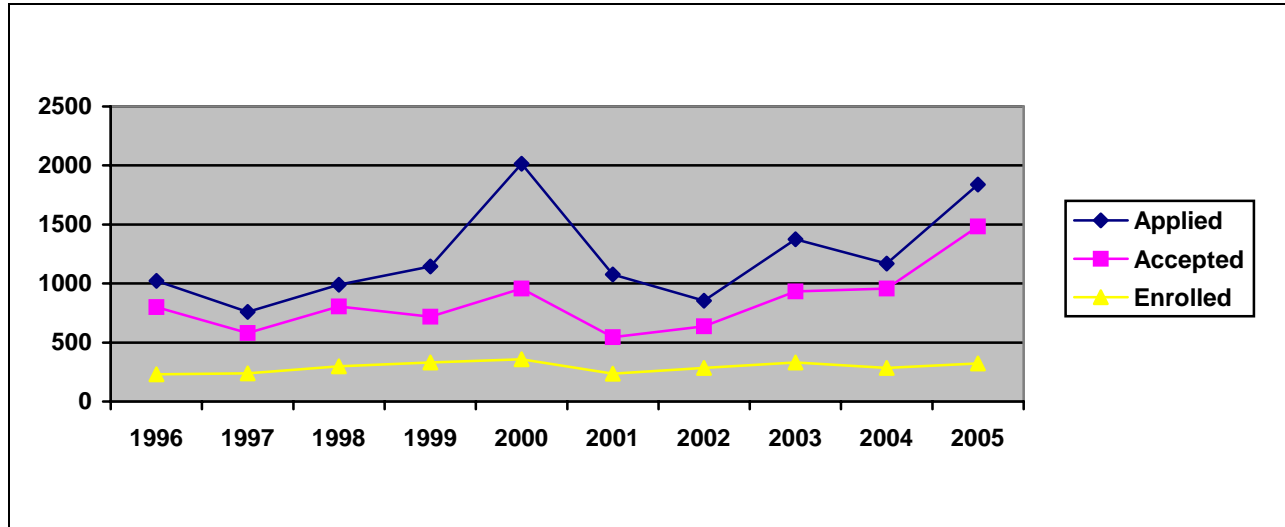
Table 2.1 New Student Admissions (Includes transfer, re-admits and graduate)

Fall Semesters, 1996-2005

	Number Applied	Number Accepted	Acceptance Yield	Number Enrolled	Enrollment Yield
2005	1,838	1,483	80.6%	324	21.8%
2004	1,170	957	81.8%	284	29.7%
2003	1,376	932	67.7%	331	35.5%
2002	853	636	74.6%	285	34.6%
2001	1,076	546	50.7%	236	43.2%
2000	2,015	956	47.4%	358	37.4%
1999	1,143	718	62.8%	331	42.4%
1998	991	804	81.8%	297	36.1%
1997	760	581	76.4%	239	41.4%
1996	1,023	800	78.2%	230	28.8%

Figure 2.1 New Student Applicants by Admission Status

Fall Semesters 1996 – 2005

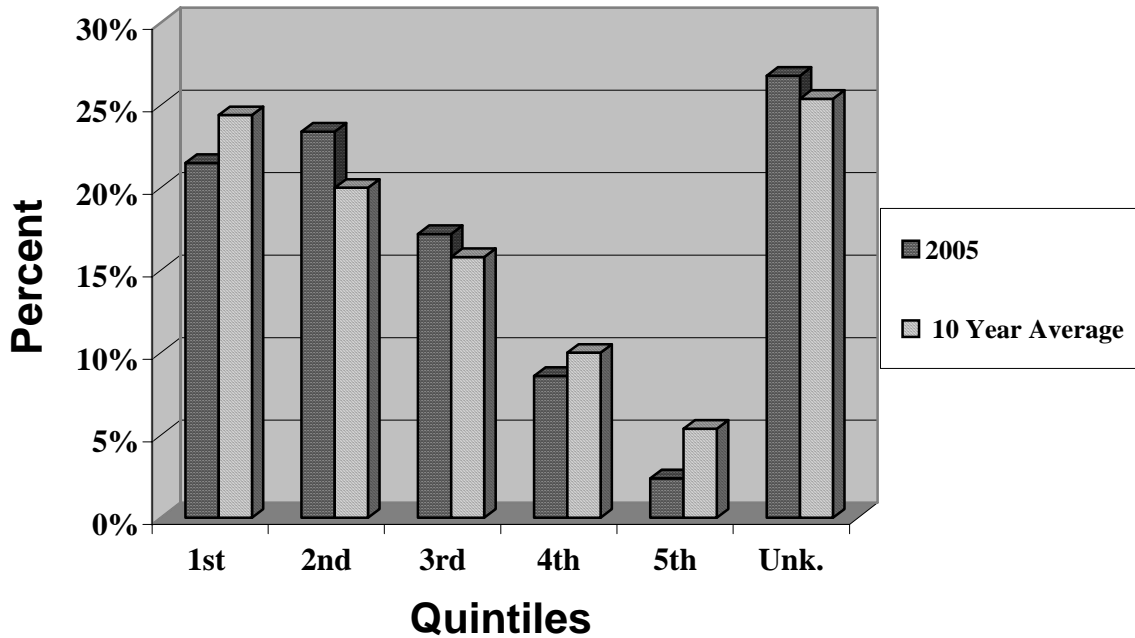


ADMISSIONS

Table 2.2 Percent Distribution of High School Rank
Fall Semesters, 1996-2005

	First Quintile	Second Quintile	Third Quintile	Fourth Quintile	Fifth Quintile	% Unknown Rank
2005	21.5%	23.4%	17.2%	8.6%	2.4%	26.8%
2004	24.7%	14.2%	14.6%	12.4%	6.2%	28.7%
2003	27.3%	14.7%	11.7%	13%	7.8%	25.1%
2002	22.2%	18.6%	15.9%	8.2%	4.5%	30.5%
2001	25.8%	21.9%	18.5%	12.6%	2.6%	17.9%
2000	27.0%	24.6%	13.7%	10.5%	7.7%	18.5%
1999	19.0%	16.1%	9.1%	6.2%	4.1%	54.1%
1998	27.2%	21.0%	12.9%	11.2%	4.0%	23.7%
1997	25.0%	24.4%	18.6%	10.3%	7.7%	14.1%
1996	24.0%	21.1%	25.7%	7.4%	6.9%	14.9%
10 Year Avg	24.4%	20.0%	15.8%	10.0%	5.4%	25.4%

Figure 2.2 Fall 2005 and Ten-Year Average of High School Rank by Quintile



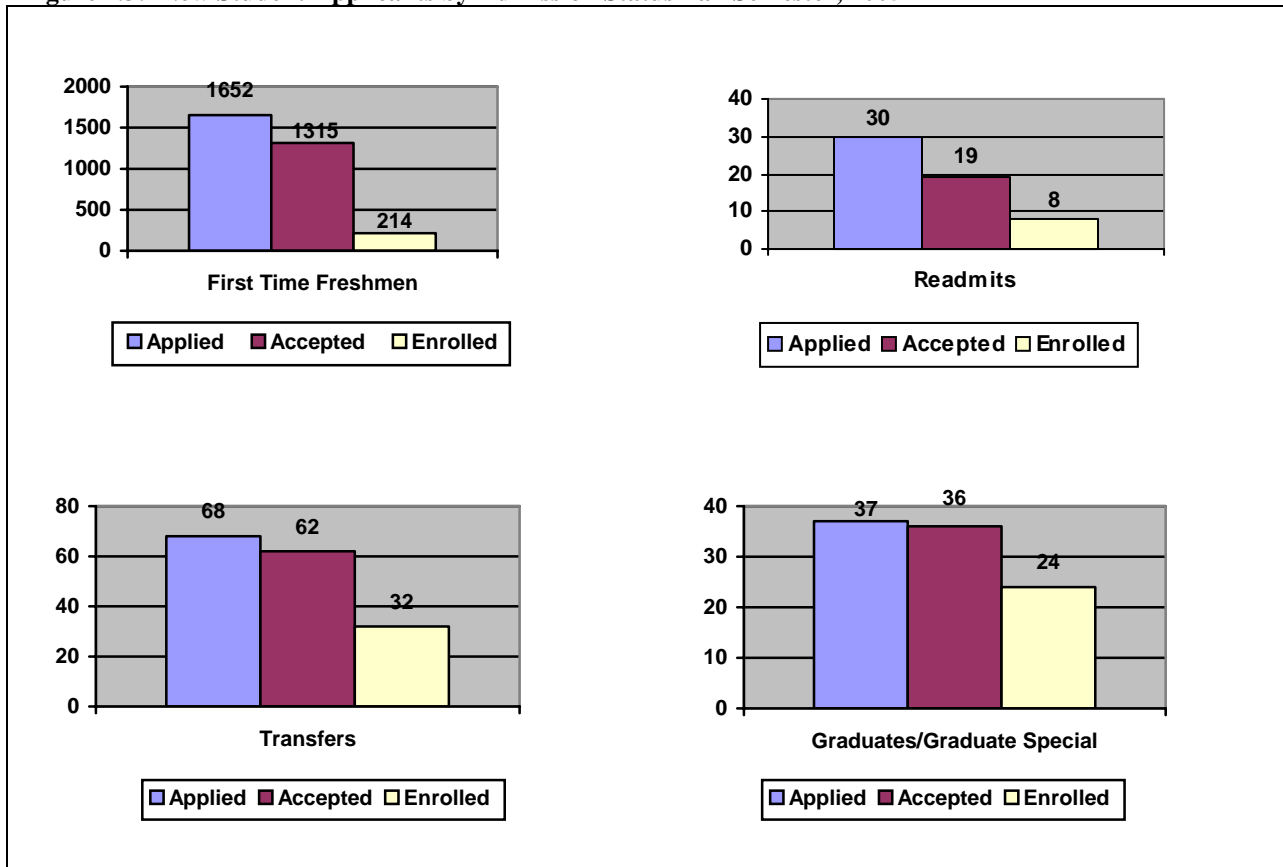
- First quintile is the highest class rank
- Unk. means “unknown”

ADMISSIONS

Table 2.3: Entering Status of New Students, Fall Semester, 2005

	First-Time Freshmen	Transfer	Readmit	Graduate	Graduate Special	Transient and Exchange	Total
Number Applied	1643	68	30	26	11	51	1838
Number Accepted	1310	62	19	26	10	51	1483
Accepted Yield	79.7%	91.1%	63.3%	100%	90.9%	100%	80.6%
Number Enrolled	214	32	8	17	7	46	324
Enrollment Yield	16.3%	51.6%	42.1%	65.3%	70.0%	90.1%	21.8%

Figure 2.3: New Student Applicants by Admission Status Fall Semester, 2005



ADMISSIONS

Table 2.4: Admissions of First-Time Freshmen, Fall 2005

	<u>Entering Test Scores</u>	
	SAT	ACT
Range	640-1420	14-29
75 th Percentile	1100	22
Mean	971	20
25 th Percentile	850	18
Number students submitting scores	101	156
High School GPA		
Range	1.30 – 4.0	
75 th Percentile	3.43	
Mean	3.02	
25 th Percentile	2.67	
Number students submitting scores	194	
High School Rank		
Percent in Top 10%	17%	
Percent in Top 50%	74.5%	
Number students submitting scores	153	

ADMISSIONS

**Table 2.5 Distribution of First Time Freshman Enrollment by Geographic Region and State
Fall Semester, 2005**

<u>EAST</u>			<u>SOUTH</u>	
Connecticut	0		Alabama	3
District of Columbia	0		Florida	2
Maryland	3		Georgia	20
Massachusetts	2		Mississippi	6
New Hampshire	0		North Carolina	1
New Jersey	1		South Carolina	1
New York	3		Tennessee	57
Pennsylvania	0		Virginia	1
Total	9 (4.2%)		Total	91 (42.5%)
 <u>MIDWEST</u>			<u>SOUTHWEST</u>	
Illinois	35		Arkansas	8
Indiana	6		Louisiana	2
Iowa	0		New Mexico	1
Kansas	0		Oklahoma	1
Kentucky	5		Texas	7
Michigan	8		Total	19 (8.9%)
Minnesota	0			
Missouri	3		<u>WEST</u>	
Ohio	7		Arizona	0
Wisconsin	2		California	22
West Virginia	0		Colorado	0
Total	68 (31.7%)		Idaho	0
			Nevada	0
			Oregon	0
			Washington	2
			Total	24 (11.2%)
			<u>FOREIGN</u>	
			Total	3 (1.4%)
			<u>GRAND TOTAL</u>	
				214

FINANCIAL AID

Table 2.6 Financial Aid Summaries: 2000-01 to 2004-05

	<u>2000-01</u>	<u>2001-02</u>	<u>2002-2003</u>	<u>2003-2004</u>	<u>2004-2005</u>
Grants¹	\$1,325,104	\$1,809,660	\$1,867,816	\$1,854,449	\$1,666,298
Loans²	\$5,222,629	\$4,931,958	\$6,107,801	\$5,781,973	\$5,372,593
Self Help³	\$217,392	\$219,863	\$220,920	\$11,952	\$120,792
Scholarships⁴	\$2,054,649	\$1,814,322	\$2,573,203	\$3,418,799	\$2,778,393
TOTAL AID	\$8,819,774	\$8,775,803	\$10,769,740	\$11,067,173	\$9,938,076
Unduplicated Recipients	730	699	733	831	753
Average Aid Per Student	\$11,967	\$12,555	\$14,693	\$13,318	\$13,198
GRANTS:					
-Average Grant/Student	\$1,798	\$2,589	\$2,548	\$2,232	\$2,213
-Percent of Total Aid	15.0%	20.6%	17.3%	16.7%	16.7%
LOANS:					
-Average Loan/ Student	\$7,086	\$7,056	\$8,333	\$6,957	\$7,135
-Percent of Total Aid	59.2%	56.3%	56.7%	52.2%	54.1%
SELF-HELP:					
-Average Amount Student	\$295	\$315	\$301	\$14	\$160
-Percent of Total Aid	2.4%	2.5%	2.1%	0.1%	1.2%
SCHOLARSHIPS:					
-Average Scholarship/ Student	\$2,788	\$2595	\$3,511	\$4,114	\$3,690
-Percent of Total Aid	23.3%	20.7%	23.9%	30.9%	28.0%

¹ Pell, SEOG, State

²Stafford, Perkins, Plus

³College Work Study, University Work

⁴UNCF, University, Outside Sources

FINANCIAL AID

Table 2.7 Financial Aid Allocations 2003-04 and 2004-05

TYPE OF AID	2003-2004		2004-2005	
	Number of Students	Amount Awarded	Number of Students	Amount Awarded
Pell Grants	472	\$1,432,679	417	\$1,224,724
SEOG	224	\$239,225	131	\$246,556
College Work Study		\$11,592	0	\$0
Stafford Loans	892	\$3,333,101	560	\$2,902,846
Perkins Loans	164	\$442,345	214	\$774,846
Plus Loans	156	\$1,415,003	155	\$1,694,901
Academic Scholarship/Grants		\$2,556,702	288	\$1,758,299
State Scholarship/Grants	63	\$154,965	95	\$448,566
Other Scholarship/Grants	312	\$62,097	183	\$887,338
Total		\$11,067,173		\$9,938,076

Source: Institutional Research, Banner Database

Figure 2.4 Percent Distribution of Financial Aid by Category: 2000-01 through 2004-05

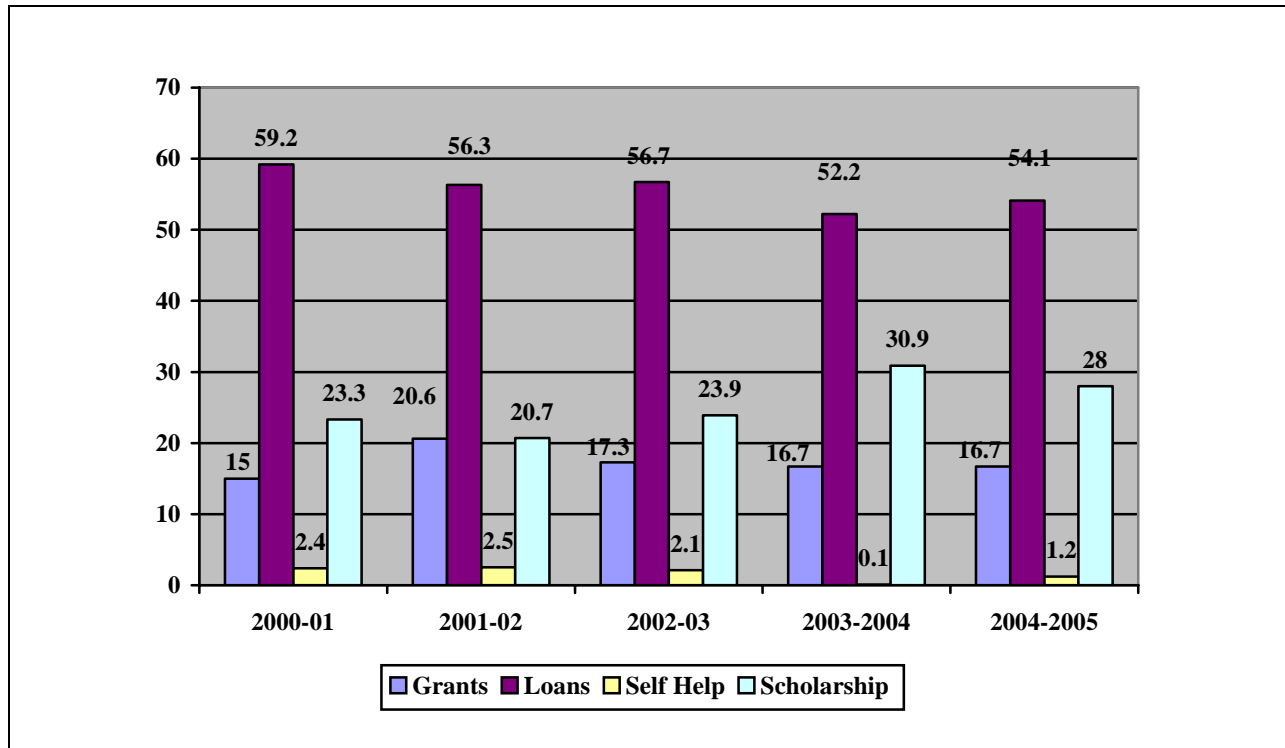


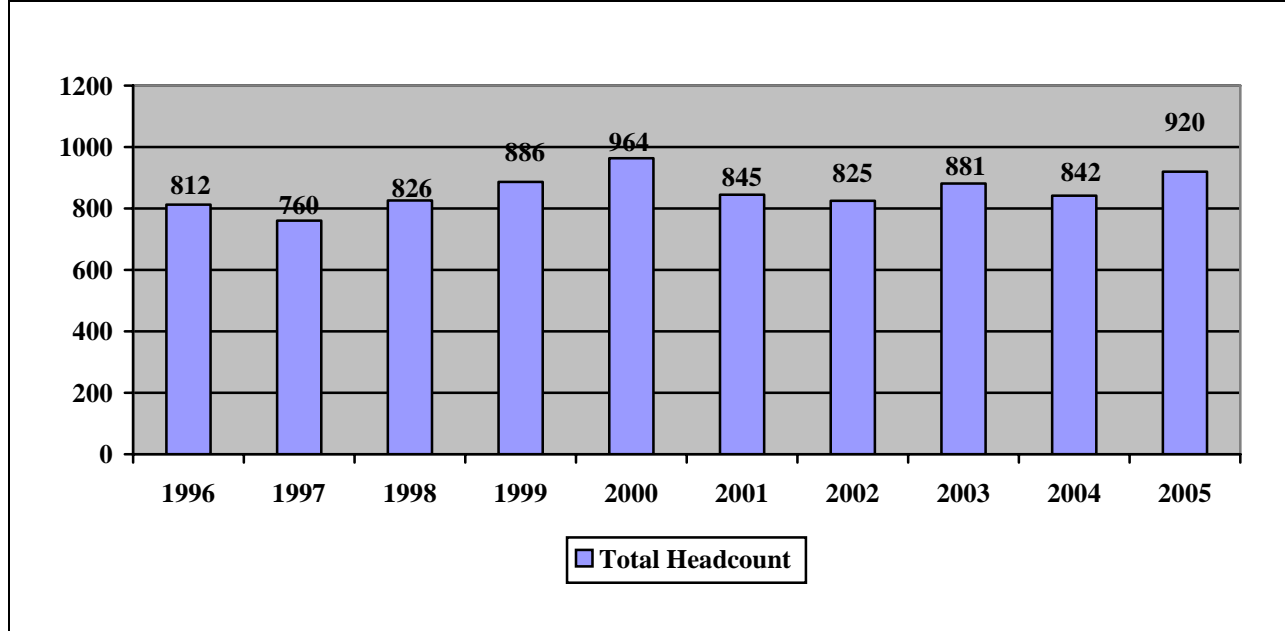
Table 2.8: Total Headcount by Gender

Fall Semesters 1996 – 2005

YEAR	MALE	FEMALE	TOTAL
2005	282	638	920
2004	293	549	842
2003	278	603	881
2002	254	571	825
2001	260	625	845
2000	311	653	964
1999	268	618	886
1998	248	578	862
1997	226	534	760
1996	246	566	812
Period Average	267	593	860
Average %	31%	69.0%	100%

Figure 2.5: Total Headcount

Fall Semesters 1996 – 2005



ENROLLMENT

Table 2.9: Total Headcount by Academic Classification*

Fall Semesters 1996 – 2005

YEAR	FRESHMEN	SOPHOMORES	JUNIORS	SENIORS	GRADUATE*	POST BAC	TOTALS
2005	434	161	169	100	41	15	920
2004	342	191	142	119	29	19	842
2003	285	200	143	222	31		881
2002	339	170	175	108	33		825
2001	327	138	155	163	62		845
2000	375	172	149	148	120		964
1999	378	147	139	153	69		886
1998	322	120	128	189	67		826
1997	246	135	142	174	63		760
1996	292	144	147	185	44		812
10 Year Average	334	158	149	156	56	17	856

*For historical reasons, the Graduate column before 2004 also includes Post-Baccalaureate students who are not in the graduate degree program, but are taking courses for such programs as teacher certification, after receiving a Bachelor's degree at Fisk or elsewhere. As of fall 2004, we are reporting these separately.

* Academic classifications are by earned credit hours (Freshman = 0-30; sophomore =31-60; junior = 61-90; senior = 91-120). The large freshman count is to a certain extent due to the fact that many third semester students are still one or two credits shy of the 31 hours they need for sophomore status.

Table 2.10: Headcount by Class and Gender: Fall Semester, 2005

	Male	Female	Total
Freshmen	139	295	434
Sophomore	57	104	162
Junior	41	128	169
Senior	26	74	101
Graduate	13	28	41
Graduate, Special	3	12	15
-----	-----	-----	-----
Totals	282	638	920
(% Total)	30.8%	69.3%	100%

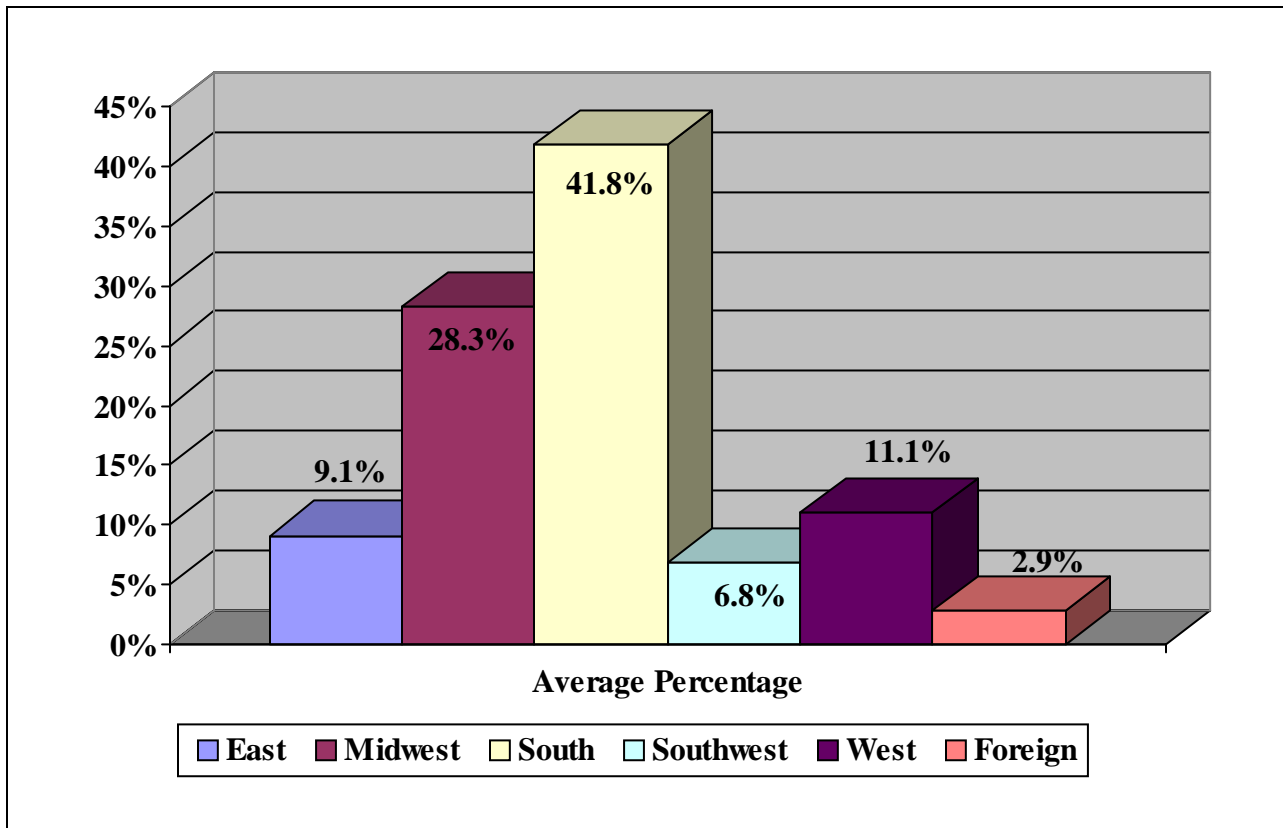
ENROLLMENT

Table 2.11 Percent Distribution of Headcount by Geographical Region

Fall Semesters 1996 – 2005

	EAST	MIDWEST	SOUTH	SOUTHWEST	WEST	FOREIGN	TOTAL COUNT
2005	6.9%	27.5%	43.9%	6.6%	12.1%	2.4%	920
2004	8.9%	29.0%	40.4%	5.1%	12.4%	4.2%	842
2003	8.6%	30.3%	40.4%	5.8%	11.4%	3.6%	881
2002	8.3%	29.3%	40.7%	6.0%	11.6%	5.0%	825
2001	8.2%	28.9%	41.2%	6.9%	10.0%	5.0%	845
2000	8.0%	27.5%	44.8%	6.8%	9.9%	3.0%	964
1999	9.5%	28.4%	40.9%	7.2%	10.2%	3.8%	886
1998	10.0%	28.5%	41.8%	8.0%	10.0%	1.5%	826
1997	11.2%	27.4%	42.6%	7.6%	10.8%	0.4%	760
1996	11.2%	26.4%	41.3%	8.5%	12.6%	0.2%	812
10 Year Average	9.1%	28.3%	41.8%	6.8%	11.1%	2.9%	856

Figure 2.6: Ten-Year Average of Percent Distribution of Headcount by Region: 1996-2005



ENROLLMENT

Table 2.12 Total Headcount Enrollment Distribution by Region and State

Fall Semesters 2004 and 2005

	2004	2005		2004	2005
<u>EAST</u>			<u>SOUTH</u>		
Connecticut	4	2	Alabama	18	18
Delaware	0	0	Florida	17	17
District of Columbia	7	6	Georgia	34	54
Maryland	21	19	Mississippi	12	15
Massachusetts	1	3	North Carolina	3	4
New Jersey	6	5	South Carolina	10	3
New York	26	23	Tennessee	233	281
New Hampshire	1	0	Virginia	13	11
Pennsylvania	7	6	TOTAL	340	403
Rhode Island	0	0			
TOTAL	75	64			
			<u>SOUTHWEST</u>		
			Arkansas	18	22
<u>MIDWEST</u>			Louisiana	6	11
Illinois	121	133	Oklahoma	4	4
Indiana	5	7	Texas	15	24
Iowa	1	0	TOTAL	43	61
Kansas	1	1			
Kentucky	14	17	<u>WEST</u>		
Michigan	20	20	Alaska	0	0
Minnesota	3	0	Arizona	1	0
Missouri	19	21	California	92	99
Nebraska	0	2	Colorado	3	1
Ohio	52	43	Nevada	0	1
Wisconsin	8	9	New Mexico	0	1
West Virginia	0	0	Oregon	3	3
TOTAL	244	253	Idaho	1	0
			Washington	4	4
			Hawaii	1	1
			Utah	0	1
			TOTAL	105	111
			Virgin Islands	2	16
			Puerto Rico	2	0
			INTERNATIONAL	34	23
			UNKNOWN		5
			GRAND TOTAL	842	920

MAJOR PROGRAMS

Table 2.14: Distribution of Undergraduate Majors by Division and Discipline

Fall Semesters, 2001 through 2005

*Joint majors are weighted ½, once in each major field.

	2001	2002	2003	2004	2005
<u>BUSINESS ADMINISTRATION</u>					
Business Administration	100	132	108.5	116.5	124.5
DIVISION TOTAL	100	132	108.5	116.5	124.5
% DECLARED MAJORS	17.6%	20.6%	17.2%	14.6%	16.5%
% HEADCOUNT	13.0%	16.7%	12.8%	13.8%	13.5%
<u>Humanities & Fine Arts</u>					
Art	6	18.5	12.5	14.5	15.5
Dramatics & Speech	12	27	31	22	20
English	26	31	31.5	36.5	40
Modern Foreign Lang.	3	10	7	5	10.5
Music	17	13	23	25	29
Religion and Philosophy	1	9	5.5	8.5	8.5
DIVISION TOTAL	65	99.5	110.5	111.5	123.5
% DECLARED MAJORS	11.5%	15.5%	17.5%	18.1%	16.3%
% HEADCOUNT	8.5%	12.6%	13%	14.0%	13.4%
<u>NSM</u>					
Biology	117	94.5	122.5	116.5	153
Chemistry	20	26.5	28.5	28	33
Computer Science	44	19	26.5	22	22
Mathematics	12	9.5	9.5	4.5	4
Nursing (new in 2004)				26	33
Physics	11	9.5	3	6.5	28.5
DIVISION TOTAL	204	159	190	203.5	273.5
% DECLARED MAJORS	36.0%	36.0%	30%	33.0%	36.2%
% HEADCOUNT	26.6%	26.6%	22.4%	25.6%	29.7%
<u>Social Science</u>					
History	16	13	19.5	19	24
Political Science	44	60.5	51.5	45	49.5
Psychology	121	157	127	88.5	112
Sociology	17	20	25	2	23
Special Education (new in 2003)				12	26
DIVISION TOTAL	198	250.5	223	185.5	234.5
% DECLARED MAJORS	34.9%	39.0%	35.3%	30.1%	31%
% HEADCOUNT	25.8%	31.6%	26.2%	23.4%	25.5%
TOTAL DECLARED MAJORS	567	641	632	617	756
% HEADCOUNT	73.8%	80.9%	74.4%	77.8%	82.2%
TOTAL UNDECLARED MAJORS	201	151	218	177	164
% HEADCOUNT	26.2%	19.1%	25.6%	22.3%	17.8%
TOTAL HEADCOUNT	768	792	850	794	920

CREDIT HOURS

Table 2.15: Distribution of Credit Hours Offered, Produced, and Produced Per FTE Faculty and Average Class Size - Fall Semesters, 2001 through 2005

	2001	2002	2003	2004	2005
CORE CURRICULUM					
No of Sections	29	29	28	33	40
Credit Hours Offered	116	112	108	108	128
Headcount	761	759	1,014	940	1062
Credit Hours Produced ¹	3,044	3,036	3,092	2992	3236
Credit Hours Produced /FTE/Faculty ²	315	314	343.6	332.4	305.3
Average Class Size ³	26.2	26.2	36.2	28.5	26.5
UNDERGRADUATE STUDIES					
No of Sections	232	220	215	225	231
Credit Hours Offered	675.5	654	630	660	682
Headcount	3,046	3,028	3,210	2913	3238
Credit Hours Produced	9,713	9,494	10,021	9042	10039
Credit Hours Produced /FTE/Faculty	173	174	190.9	164.4	176.7
Average Class Size	13.1	13.8	14.9	12.9	14.0
GRADUATE STUDIES					
No of Sections	28	19	16	18	21
Credit Hours Offered	55.5	34.5	40.5	42.5	48.5
Headcount	83	58	66	83	114
Credit Hours Produced	171	115	181.5	210	272
Credit Hours Produced /FTE Faculty	37	40	53	59	67
Average Class Size	3.8	3.1	4.1	4.6	5.4
TOTALS					
No of Sections	289	268	259	276	292
Credit Hours Offered	847	801	778.5	810.5	858.5
Headcount	3,245	3,845	4,290	3936	4414
Credit Hours Produced	12,928	12,635	13,294.5	1224.4	13,547
Credit Hours Produced /FTE/Faculty	183	189	205	181.3	189.5
Average Class Size	11.3	14.3	16.6	13.2	15.1

SOURCE: Institutional Research, Banner Database

1 Credit Hours Produced is derived by multiplying credit hours for each course by number of students enrolled in a course

2 FTE is "Credit hrs offered divided by 12 credits, where 12 credits is faculty load"

3 Average Class Size is "Headcount divided by number of sections"

Figure 2.7: Profile of Total Credit Hours Offered

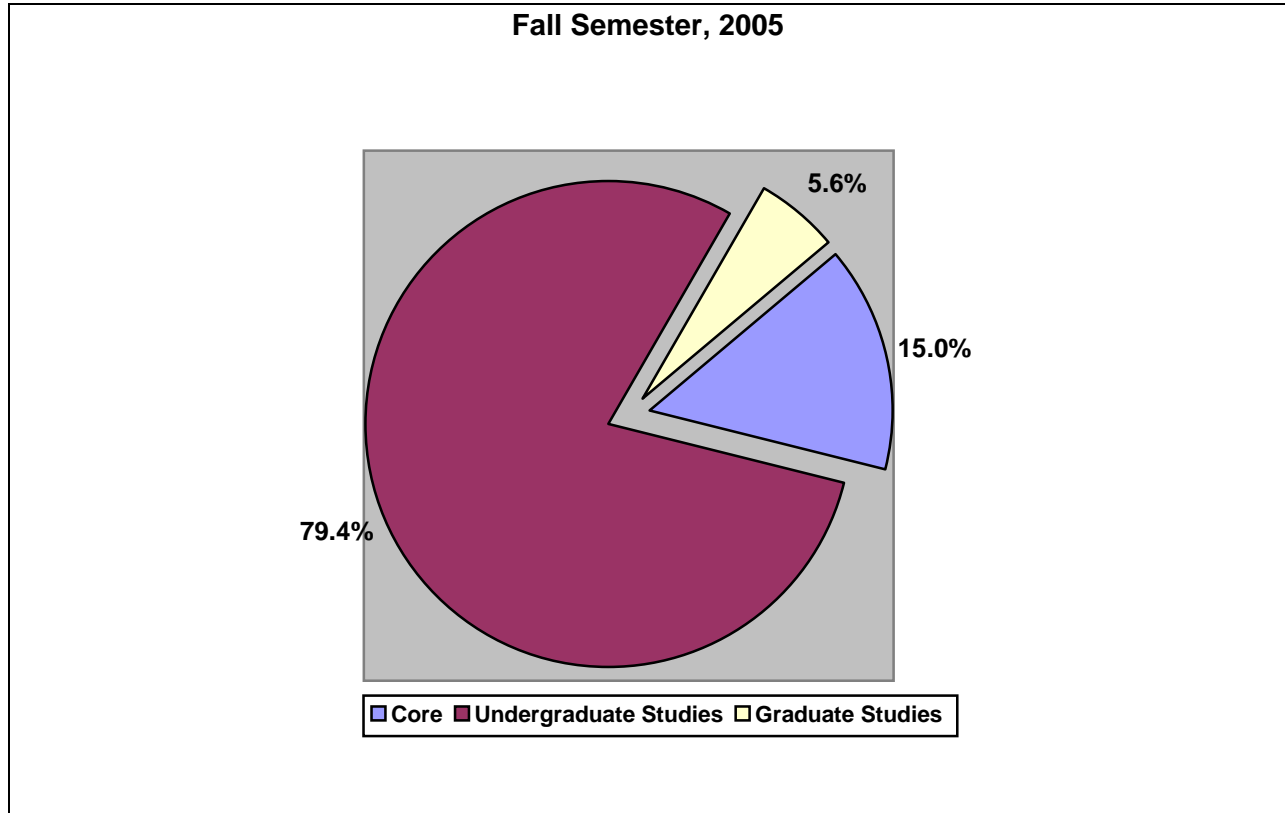


Table 2.16 Undergraduate Disciplines with Highest Credit Hours Produced

Fall Semester, 2005

Discipline	Number Sections	Credit Hours Produced	Fall 2005 Rank
SPANISH	16	1288	1
MATH	13	1236	2
PSYCHOLOGY	11	1062	3
BUSINESS ADMIN	15	832	4
BIOLOGY	17	772	5

Table 2.17: Distribution of Credit Hours Offered, Credit Hours Produced, Credit Hours Produced per FTE Faculty and Average Class Size**Fall Semester, 2005**

	Number of Sections	Credit Hours Offered	Enrollment	Credit Hours Produced	CHP/FTE-Faculty	Average Class Size
By Curricular Level:						
Core	40	128	1,062	3,236	305.3	26.5
Undergraduate Studies	231	682	3,238	10,039	176.7	14.0
Graduate Studies	21	48.5	114	272	67	5.4
Total	292	858.5	4,414	13,547	189.5	15.1

Core Curriculum by Course:						
100	8	0	253	0	0	31
110	10	40	253	1012	306	25
130	3	12	78	312	312	26
140	1	4	23	92	278	23
210	4	16	116	464	349	29
220	4	16	108	432	325	27
230	4	16	77	308	231	19
250	3	12	80	320	320	26
360	3	12	74	296	296	25
Total	40	128	1062	3236	305	26
Undergraduate Studies by Division/Program:						
BUA	18	61	295	942	92	16.4
HFA	95	271	968	3017	133	10.2
NSM	66	165	1195	3122	227	18.1
SSC	47	170	769	2926	206	16.4
Total	231	681	3238	10,039	177	14.0
Graduate Studies by Discipline:						
BIO	0	0	0	0	0	0
CHE	5	10.5	24	40	45.7	4.8
PHY	6	16	34	84	64.6	5.6
PSY	10	22	56	148	101	5.6
Total	21	48.5	114	272	68	5.4

UNDERGRADUATE CREDIT HOURS

Table 2.18: Credit Hours Offered, Credit Hours Produced, Credit Hours Produced per FTE Faculty and Average Class Size

Fall Semester, 2005

	NO. SECTIONS	CREDIT HOURS OFFERED	FTE FACULTY ENROLLED	CREDIT HOURS PRODUCED	CREDIT HOURS PRODUCED/ FTE-FAC	AVG CLASS SIZE
<u>BUA</u>						
ACC	3	11	0.9	34	112	11.3
BUA	7	21	1.7	160	485	22.8
ECO	3	10	0.8	48	151	16.0
FIN	3	11	0.9	32	110	10.6
MGT	2	8	0.6	21	84	10.5
TOTAL	18	61	5.1	295	942	16.4
<u>HFA</u>						
ART	10	40	3.3	76	304	7.6
DSP	7	22	1.8	55	171	7.8
ENG	7	28	2.3	107	428	15.3
HFA	9	23	1.9	47	131	5.2
<u>MFL</u>						
FRE	2	8	0.6	22	88	11.0
SPA	16	64	5.3	322	1288	82.6
MUS	38	62	5.2	285	391	7.5
RPH	6	24	2.0	54	216	9.0
TOTAL	95	271	22.6	968	3017	10.2
<u>HON</u>	5	14	1.2	11	32	2.2
<u>NSM</u>						
BIO	17	30	2.5	392	772	23.0
CHE	14	30	2.5	269	565	19.2
CSC	10	27	2.3	82	241	8.2
MTH	13	52	4.3	309	1236	23.7
NSCI	3	8	0.6	28	62	9.3
PHY	9	18	1.5	115	246	12.7
TOTAL	66	165	13.7	1195	3122	18.1
<u>SSC</u>						
EDU	7	20	1.6	60	165	18.6
HIS	5	20	1.6	85	340	17.0
PSC	8	32	2.6	106	424	40.7
PSY	11	41	3.4	270	1062	24.5
SOC	7	27	2.2	133	531	19.0
SPED	6	18	1.5	56	168	9.3
SSC	3	12	1.0	59	236	19.6
TOTAL	47	170	14.2	769	2926	16.4
UNDERGRAD						
TOTALS	231	681	56.7	3238	10,039	14.0

SOURCE: Institutional Research, Banner Data

CLASS SIZE**Table 2.21 Distribution of Class Size For Undergraduate Studies: Fall Semester 2005**

Size Range	BU	CORE	HFA	HON	NSM	SSC	Total
1 - 5	1	0	37	5	16	7	66
6 - 10	5	1	26	0	10	10	52
11-15	3	6	14	0	13	10	46
16-20	2	3	5	0	3	3	16
21-25	4	6	4	0	7	7	28
26-30	2	10	5	0	4	4	25
31-35	1	8	3	0	5	5	22
36-40	0	3	0	0	1	0	4
41-50	0	3	0	0	4	0	7
50 and Above	0	0	1	0	3	1	5
TOTAL	18	40	95	5	66	47	271

Table 2.22: Distribution of Class Size For Graduate Studies: Fall Semester 2005

Size Range	NSM	SSC	Total
1 - 5	4	6	10
6-10	7	2	9
11-15	0	2	2
Total	11	10	21

Table 2.23: Academic Performance of Students

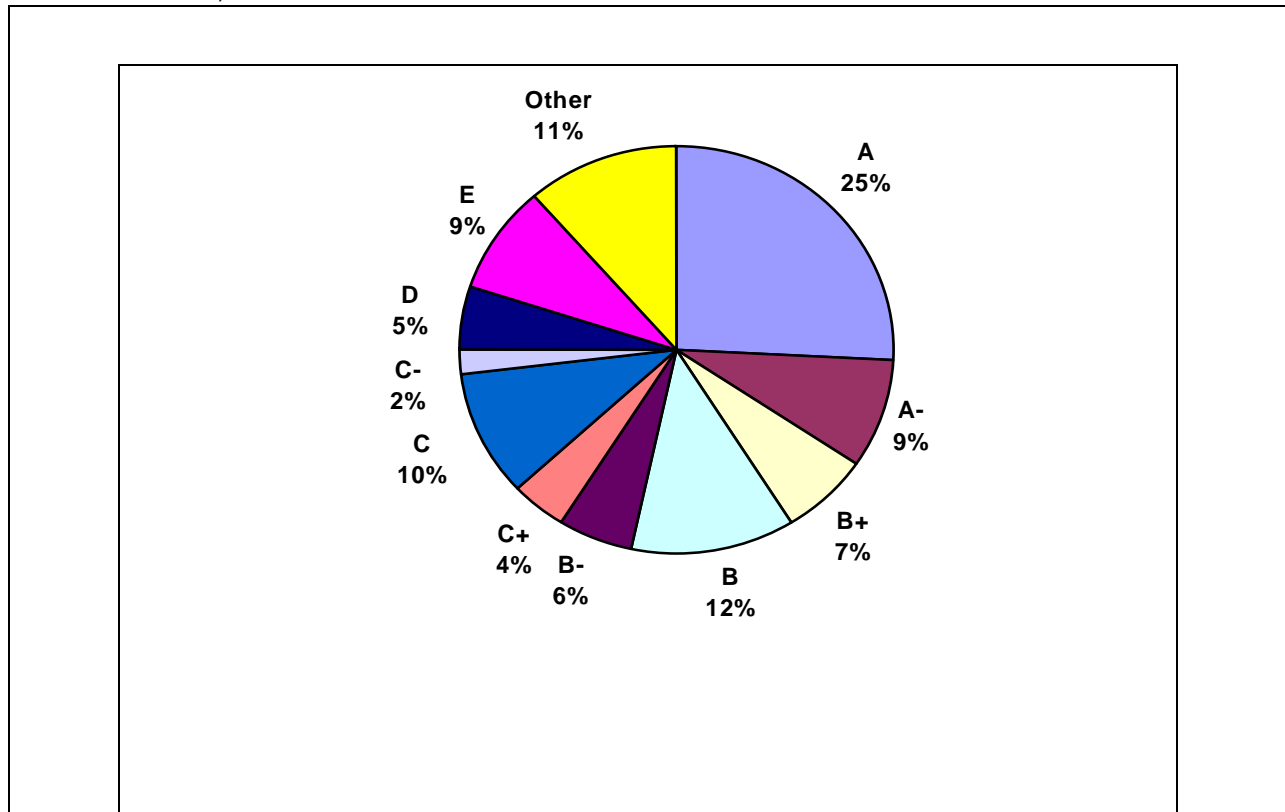
Fall Semester 2005

CLASS	4.00 GPA Fall Semester	DEAN'S LIST (3.30 GPA and Above) Fall Semester
Freshmen	5	36
Sophomores	7	28
Juniors	13	58
Seniors	3	22
Totals	28	144
% Undergraduate Enrollment	3.3%	16.7%

SOURCE: Banner Academic History

Figure 2.8: Profile of All Earned Grades: Fall 2005

Other = Withdrawn, Pass/Fail



DISTRIBUTION OF GRADES

PERCENT GRADE DISTRIBUTIONS BY PROGRAM - FALL 2005 (+/- Grades Combined)

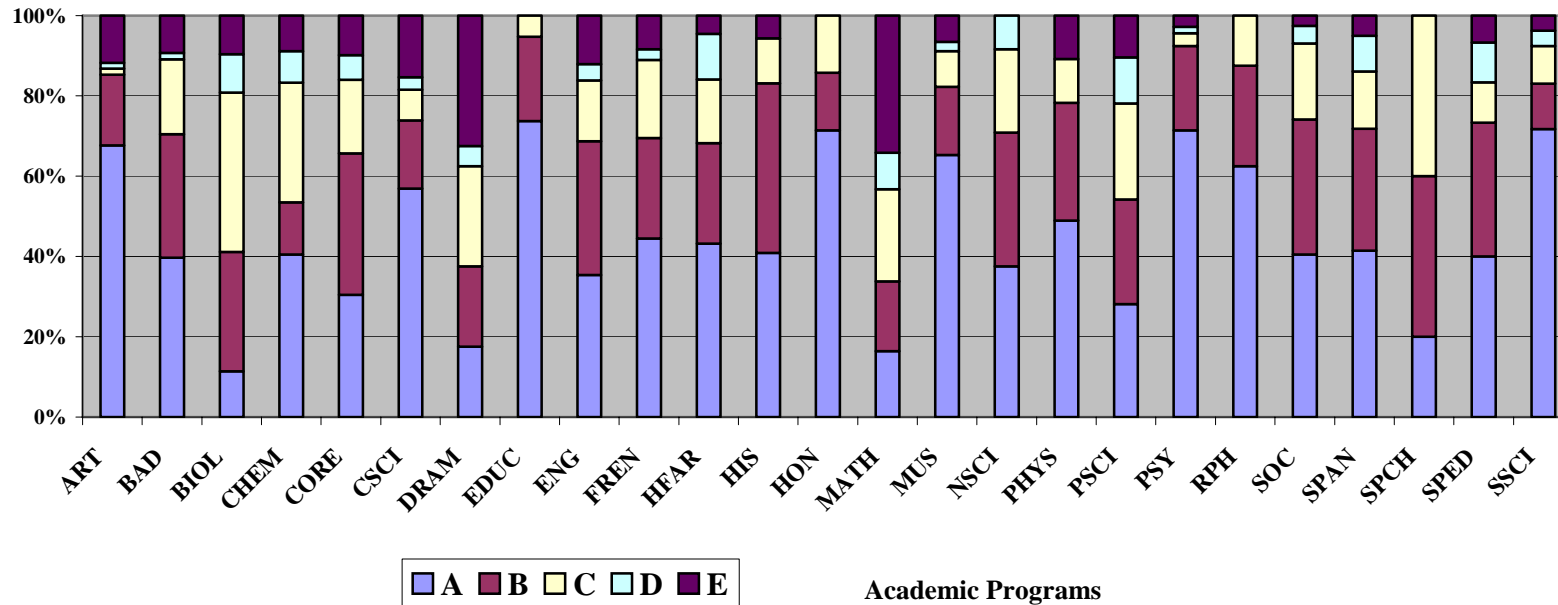


Table 2.26: Degrees Awarded by Major

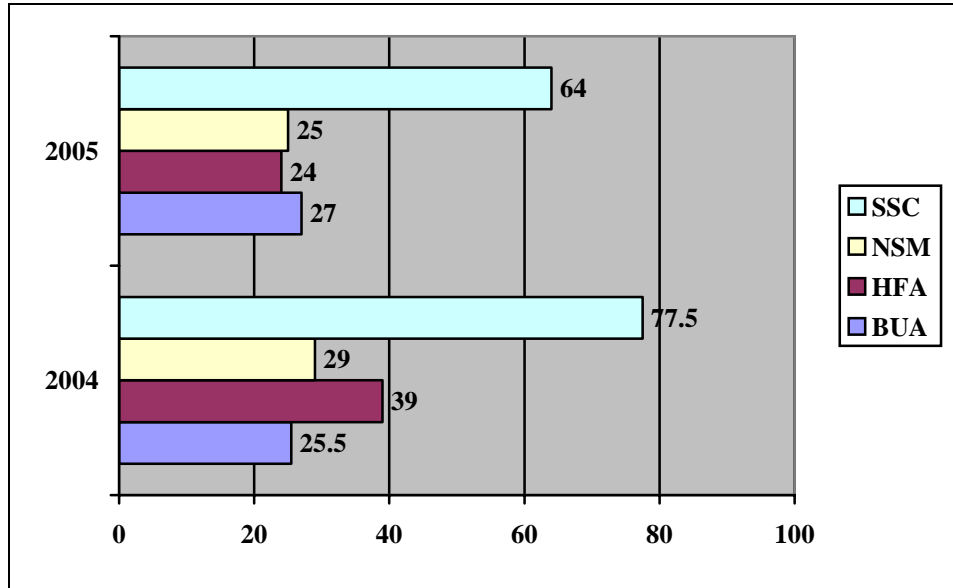
Commencements May 2001 through May 2005 (Including degrees completed in previous December)

	2001	2002	2003	2004	2005
BACHELOR DEGREES					
<u>Business Administration</u>	22	47	24	25.5	27
<u>HFA Division</u>					
ART	4	9	4.5	4	3.5
DRAMA & SPEECH	1	4	4	12.5	5
ENGLISH	17	10.5	8.5	10	8
MODERN FOR LANG	6	2.5	2	4	1.5
MUSIC	1	0	5	6.5	3
RELIGION & PHIL	2.5	1	5	1	3
HFA TOTAL	30.5	27	29	39	24
<u>NSM</u>					
BIOLOGY	13	10	17	17	17
CHEMISTRY	4	8	9	4	5
COMP SCI	2	11	3.5	6	3
MATH	0	0	1.5	1	0
PHYSICS	.5	7	3	1	0
Natural Science Total	19.5	36	34	29	25
<u>SOCIAL SCIENCES DIV</u>					
HISTORY	6	6.5	3.5	3.5	6
POLITICAL SCI	5	13	12.5	16.5	13
PSYCHOLOGY	38	35	38.5	49.5	32.5
SOCIOLOGY	4	9.5	7.5	6	6.5
SPECIAL ED	-	-	-	2	6
SSC TOTAL	53	64	62	77.5	64
GENERAL STUDIES	-	-	-	2	-
TOTAL BACHELOR DEGREES	124	174	149	171	140
MASTERS DEGREES					
BIOLOGY	2	1	-	0	1
CHEMISTRY	2	1	1	0	0
PHYSICS	4	6	-	3	4
PSYCHOLOGY	6	5	2	3	3
SOCIOLOGY	3	5	1	0	0
TOTAL MASTERS DEGREES	17	18	4	6	8
TOTAL DEGREES	142	192	153	177	148

Source: Banner

DEGREES CONFERRED

**Figure 2.9: Undergraduate Degrees Conferred by Division
Commencements 2004 and 2005**



**Table 2.27 Percent Distribution of Bachelor's Degrees Conferred by Major
Commencements 2004 and 2005**

	2004		2005
Psychology	28.9%	Psychology	23.2%
Business Admin	14.9%	Business Admin	19.2%
Biology	9.9%	Biology	12.1%
Political Science	9.6%	Political Science	9.6%
All Other Departments	36.7%	All Other Departments	36.3%

SOURCE: Banner

DEGREES CONFERRED

Figure 2.10: Degrees Conferred by Type

Commencement 2005

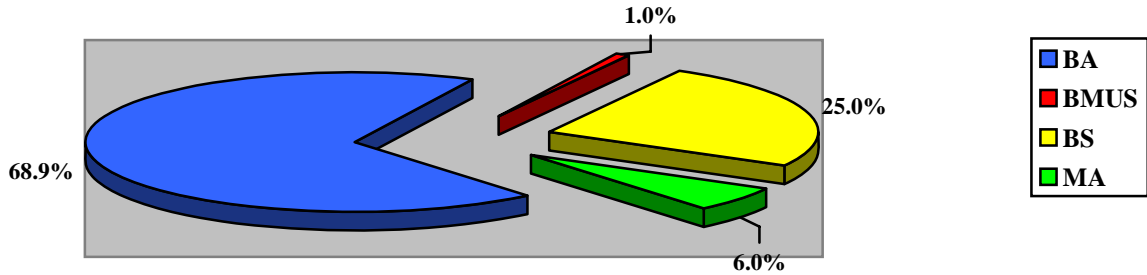


Table 2.28: Characteristics of Undergraduate Degree Recipients

Commencement, 2005

Percent Graduating in Four Years	48.5%
Percent Graduating in Five Years	19.9%
Percent Graduating in More than Five Years	8.1%
Percent Transferred to Fisk	23.5%
Other	0.0%
Percent Graduating with Honors:	
Phi Beta Kappa	%
Summa Cum Laude	%
Magna Cum Laude	%
Cum Laude	%
General University Honors	%
Departmental Honors	%

DEGREES CONFERRED

Table 2.29 Degrees Conferred by Gender and Discipline - Commencements 2004 and 2005

	2004			2005		
	M	F	TOTAL	M	F	TOTAL
BACHELORS OF ARTS						
<u>BUA</u>						
BUA	-	1	1	-	1	1
<u>HFA</u>						
ART	.5	1	1.5	-	-	-
DSP	2	10.5	12.5	-	5	5
ENG	2	8	10	2	6	8
FRE				-	-	-
MUS	1	1.5	2.5	-	2	2
RPS	1	-	1	2.5	.5	3
SPA		4	4	-	1.5	1.5
SUBTOTAL	6.5	26	32.5	4.5	16	20.5
<u>NSM</u>						
BIO	4	13	17	6	11	17
CHE	-	1	1	-	-	-
CSC		1.5	1.5	.5	-	.5
MTH	-	1	1	-	-	-
PHY	1	-	1	-	-	-
SUBTOTAL	5	16.5	21.5	6.5	11	17.5
<u>SSC</u>						
HIS	-	3.5	3.5	3	3	6
PSC	6	10.5	16.5	3	10	13
PSY	4	45.5	49.5	8	24.5	32.5
SOC	2	4	6	5	1	6
SPED	-	2	2	5	1	6
SUBTOTAL	12	65.5	77.5	20.5	43.5	64
General Studies	-	2	2	-	-	-
TOTAL B.A.	23.5	110	133.5	31.5	70.5	102
BACHELOR OF MUSIC						
MUS	1	3	4	-	1	1
SUBTOTAL	1	3	4	-	1	1
BACHELOR OF SCIENCE						
<u>BUA</u>						
BUA	8.5	15	23.5	16	10	26
SUBTOTAL	8.5	15	23.5	16	10	26
<u>HFA</u>						
ART	2.5	-	2.5	1.5	2	3.5
MUS	-	-	-	-	-	-
SUBTOTAL	2.5	-	2.5	1.5	2	3.5
<u>NSM</u>						
CHE	-	3	3	1	4	5
CSC	2.5	2	4.5	1	1.5	2.5
PHY	-	-	-	-	-	-
SUBTOTAL	2.5	5	7.5	2	5.5	7.5

TOTAL B.S.	14.5	23	37.5		19.5	17.5	37
TOTAL BACHELOR DEGREES	38	133	171		51	89	140
MASTERS OF ARTS	M	F	T		M	F	T
<u>NSM</u>							
BIO	-	-	-		-	1	1
CHE	-	-	-		-	-	-
PHY	3	-	3		4	-	4
SUBTOTAL	3	-	3		4	-	5
<u>SSC</u>							
PSY	-	3	3		-	3	3
SOC	-	-	-		-	-	-
SUBTOTAL	-	3	3		-	3	3
TOTAL MASTERS DEGREES	3	3	6		4	4	8
TOTAL DEGREES	41	136	177		55	93	148

RETENTION AND GRADUATION RATES

Table 2.30: Retention and Graduation Rates: Fall Semesters, 1996 through 2005

<u>RETENTION</u>	<u>1996</u>	<u>1997</u>	<u>1998</u>	<u>1999</u>	<u>2000</u>	<u>2001</u>	<u>2002</u>	<u>2003</u>	<u>2004</u>	<u>2005</u>
A. No. of new (First-Time) Freshmen.	175	159	224	242	248	151	220	231	178	214
B. No. of students from line A who returned for a second year.	149 (85.1%)	150 (94.3%)	196 (87.5%)	232 (95.9%)	186 (75.0%)	125 (83%)	185 (84.1%)	192 (83.1%)	154 (86.5%)	
C. No. of students from line A who returned for a third year.	133 (76.0%)	149 (93.7%)	175 (78.1%)	159 (65.7%)	166 (67%)	109 (72.2)	148 (67.3%)	160 (69.3%)		
D. No. of students from line A who returned for a fourth year.	114 (65.1%)	127 (79.9%)	149 (66.5%)	153 (63.2%)	132 (53.2%)	97 (64.2%)	133 (60.0%)			
E. No. of students from line A who returned for a fifth year.	30 (17.1%)	26 (16.3%)	22 (9.8%)	29 (12.0%)		25 (16.5%)				
F. No. of students from line A who returned for a sixth year.	4 (2.2%)	3 (1.9%)	2 (0.9%)			6 (2.4%)				
<u>GRADUATION</u>										
G. No. of students from line A who graduated in four years.	91 (52.0%)	86 (54.1%)	120 (53.4%)	107 (44.2%)	102 (41.1%)	62 (41.0%)				
H. No. of students from line A who graduated in five years.	102 (58.2%)	113 (71.1%)	147 (65.6%)	134 (55.4%)	130 (52.4%)					
I. No. of students from line A who graduated in six years.	110 (62.9%)	114 (71.6%)	152 (67.9%)	144 (59.5%)						

SOURCE: Institutional Research, Banner Database

FACULTY/STAFF PROFILES

QUICK FACTS

Faculty – Fall 2004

- Faculty Profile:

Full-Time Instructional Faculty	52
Division Directors	4
Department Chairs	11
On-Leave	4
Part-Time Instructional Faculty	39
Research Faculty	13
Total	104

- Faculty Profile by Gender:

Male	63
Female	41
Total	104

- Faculty by Highest Degree:

Doctoral	56
Master's	48
Total	104

- Percent Tenured:

Full-Time Instructional Faculty	58%
Part-Time Instructional Faculty	0%

- Full-Time Faculty Profile by Race:

Black	30
White	15
Asian	4
Hispanic	1
Other	2
Total	52

FALL 2004: Table 3.1 Full-Time Instructional Faculty

Division of Business Administration			
	RANK	HIGHEST DEGREE	DEGREE FIELD
Cambronero, Alfredo (Director)	Associate Professor	PhD	Economics
Cargill, Stafford	Assistant Professor	PhD	Economics
Division of Humanities and Fine Arts			
Art			
Fort, L. Fran	Lecturer	MAT	Art
Henry, Alicia, Chair	Assistant Professor	MFA	Art
Dramatics and Speech			
Fields, Peter (Chair)	Assistant Professor	PhD	Dance
Felder-Fentress, Persephone	Associate Professor	MFA	Theater
English			
Bracks, Lean'tin (Leave)	Associate Professor	PhD	English Literature
Clark, Jill	Assistant Professor	PhD	English
Davidson, Adenike	Associate Professor	PhD	English
Meyer, Adam (Chair)	Associate Professor	PhD	English
Popkin, David	Associate Professor	PhD	English
Modern Foreign Languages			
Brooks, Marcellus	Assistant Professor	MA	Spanish
Goavec, Della (Leave)	Assistant Professor	PhD	French
Meriwether, Curline	Lecturer	MA	Spanish
Nasitir, Robert	Assistant Professor	PhD	Spanish
Rasico, Nancy	Lecturer	MAT	Spanish
Music			
Autry, Philip (Chair)	Associate Professor	DMA	Music
Bumbulis, Valija	Assistant Professor	M. Music	Music (Voice)
Kwami, Paul	Curb-Beaman Professor of Music	M. Music	Music
Nash, Gary	Associate Professor	PhD	Music
Stafko, Diane	Assistant Professor	PhD	Music
Religious and Philosophical Studies			
Collier, Karen (Chair)	Associate Professor	PhD	Religion

Table 3.1: Full-Time Instructional Faculty – *Continued*

Division of Natural Science and Mathematics			
Dr. W. Eugene Collins, Director			
Biology	RANK	HIGHEST DEGREE	DEGREE FIELD
Gunasekaran, M.	Professor	PhD	Biology
Freeman-Junior, Phyllis (Leave)	Associate Professor	PhD	Biomedical Science
Ike, Justus	Associate Professor	PhD	Biology
McCarroll, Patricia	Lecturer, Core Coordinator	MS	Biology
Welch, Mary McKelvey (Chair)	Werthan Professor of Biology	PhD	Zoology
Chemistry			
Evans, Princilla (Chair)	Associate Professor	PhD	Chemistry
Lu, Weijie	Associate Professor	PhD	Chemistry
Pratt, Lawrence	Assistant Professor	PhD	Chemistry
Wingfield, Robert	Associate Professor	PhD	Chemistry
Mathematics & Comp Science			
Egariévwé, Steve	Assistant Professor	PhD	Physics
Hota, Sanjukta	Associate Professor	PhD	Mathematics
Mann, II, N. Horace	Associate Professor	PhD	Biomedical Engineering
Martin, Cathy	Associate Professor	PhD	Mathematics
Murray, Leroy	Associate Professor	MA, JD	Mathematics
Papousek, Elizabeth	Associate Professor	PhD	Mathematics
Smith, Ronald	Lecturer	MS	Mathematics
Physics			
Burger, Arnold	Associate Professor, Director of Materials Science Labs)	PhD	Physics
Morgan, Steven (Chair)	Professor	PhD	Physics
Mu, Richard	Associate Professor	PhD	Physics
Watson, Michael	Assistant Professor	PhD	Physics
Division of Social Science			
Dr. Reavis Mitchell, Director			
History			
Mitchell, Reavis (Chair)	Associate Professor	DA	History
Quirin, James	Professor	PhD	History
Wynn, Linda	Visiting Lecturer	MPA (Public Adm)	History
Political Science			
Adebanjo, Jennifer (Chair)	Associate Professor	PhD	Political Science
Nimley, Anthony	Professor	PhD	Political Science
Psychology			
Carson, Richard	Assistant Professor	PhD	Psychology
Cunningham, Rhonda	Visiting Assistant Professor	PhD	Psychology
Peters, Sheila (Chair)	Associate Professor	PhD	Psychology
Stadler, Jonathan	Visiting Professor	PhD	Psychology
Sociology & Anthropology			
Smith, Dani	Assistant Professor	PhD	Sociology
Wright, Earl	Associate Professor	PhD	Sociology

Teacher Education Program			
Debbie Thomas	Director, Special Education Program	EdD	Education (Curriculum Instruction)

Core Curriculum Instructional Faculty (Full-Time)

Patricia McCarroll, Coordinator

Autry, Philip	Associate Professor	DMA	Music
Collier, Karen	Associate Professor	PhD	Religion
Gunasekaran, Muthukamaran	Professor	PhD	Biology
Ike, Justus	Associate Professor	PhD	Biology
McCarroll, Patricia	Lecturer, Core Coordinator	MS	Biology
Meyer, Adam	Associate Professor	PhD	English
Mitchell, Reavis	Associate Professor	DA	History
Popkin, David	Associate Professor	PhD	English
Quirin, James	Professor	PhD	History
Smith, Ronald	Lecturer	MS	Mathematics
Stofko, Diane	Assistant Professor	PhD	Music
Wynn, Linda	Visiting Lecturer	MPA (Public Admin)	History
McCoy, Matthew	Lecturer	MA	Literature

Part-Time Instructional Faculty

Table 3.2: Part-Time Instructional Faculty

Division of Business Administration			
Kawatra, Sunil			Accounting
McNamee, Dennis	Adjunct Lecturer	JD	
Potts, Felicha	Adjunct Lecturer	MS	
Umontuen, Nicholas	Adjunct Lecturer	MPA	Business Administration
Division of Humanities and Fine Arts			
Collins, L.M.	Professor Emeritus	PhD	English
Conkwright, Kathy	Adjunct Lecturer	BA	Communications
Davis, Garnett R.	Adjunct Lecturer	MM	Music
Duke, Christopher	Lecturer	MA	Music
Fisher, Joseph			Education
Grigsby, Paul	Adjunct Lecturer	EdD	Art
Guillard, Cecile	Visiting Professor in French	PhD	French
Hardy, William	Adjunct Lecturer	DMIN	Religious and Phil. Studies
Jones, Theodore	Lecturer	MFA	Art
Lorenzo-Garcia, Alicia	Visiting Professor	MA	Spanish
Mitchell, Jacqueline	Adjunct Associate Professor	PhD	Speech Communication
Newby, Linda			Music
Steele, Earlie			Education
Stewart, Tanesha			Education
Wilkinson, Carlton	Adjunct Lecturer	MFA	Art

Division of Natural Science and Mathematics (Part-Time)			
Cleveland, James	Adjunct Lecturer	MS	Chemistry
Frierson, Eli	Adjunct Lecturer	MeD	Mathematics
McShepard, Gerard	Adjunct Lecturer	MS	Biology
Qian, Lei	Adjunct Lecturer	PhD	Computer Science
Wallace, Bryan	Laboratory Instructor	MS	Physics
Division of Social Science (Part-Time)			
Bellard, Stephanie	Adjunct Lecturer	MA	Psychology
Hays, Lemika			Psychology
Karpos, Mary	Visiting Professor **	PhD	Sociology
Kilcrease, Karolyn	Adjunct Lecturer	Med	Special Education
Sawyers, James	Adjunct Lecturer	Med	Admin /Supervision
Smith, Derek	Adjunct Lecturer	Med	Instructional Effectiveness
Smith, Tarik A.	Adjunct Lecturer	MA	Social Sciences
Core Curriculum (Part-Time)			
Crenshaw, Tiffany		MS	Core 230
Crowder, Stephanie	Lecturer	PhD	New Testament
Hale, Gwendolyn			Core 110
Henderson, Frances	Adjunct Lecturer	PhD	Core 110
Mohammadpour, Kouros			Core 130
Pratt, Menah	Adjunct Lecturer	PhD	Core 110
Tribble, Sherman	Lecturer	PhD	Religious & Theological Studies

Notes:

* Full-Time Administrator

**Vanderbilt University Exchange Professor

RESEARCH FACULTY AND STAFF

Table 3.3: Research Faculty and Staff

NAME	RANK	HIGHEST DEGREE	RESEARCH AREAS
Bai, Lihua	Research Assistant	PhD	Crystal Growth and Characterization
Bayssie, Mekonen			
Caulfield, John	Distinguished Research Professor	PhD	Holography , Optical Logic
Crenshaw, Tiffany	Research Technician	MA	Natural Science and Math
Feng, Zhe			
Groza, Michael	Research Assistant	BS	Radiation Detectors
Hawrami, Rastgo			
Pan, Zhengda	Research Associate Professor	PhD	Optical Materials, Laser Spectroscopy, and Fiber Optics
Qian, Lei	Research Assistant	PhD	Optical Logic, Mathematical Logic, and Computer Security
Roy, Utpal			
Sambandam, Senthil	Research Associate	PhD	Electrical Contacts to SiC, and Growth of Carbon Nanostructures
Ueda, Akira	Research Assistant Professor	PhD	Physics
Vikram, Chandra	Research Professor	PhD	Holography , Speckle Metrology, Optical Logic, and Interferometry

FACULTY STATISTICS

Fall Semesters, 2004 and 2005

Table 3.4: Distribution of Full-Time Instructional Faculty by Division and Gender

DIVISIONS	2004					2005			
	M	F	TOT	%		M	F	TOT	%
Business Administration	2	1	3	5.6%		2	0	2	3.8%
Humanities & Fine Arts	8	11	19	35.2%		9	10	19	36.5%
Natural Sciences/ & Math	15	5	20	37.0%		13	6	19	36.5%
Social Sciences	5	7	12	22.2%		6	6	12	23.0%
TOTALS	30	24	54	100%		30	22	52	100%

*Individuals with non-teaching administrative appointments or on leave are not counted, even though they may retain tenured status.

Table 3.4.2: Distribution of Full-Time Instructional Faculty by Academic Discipline and Gender

DISCIPLINES	2004					2005		
	M	F	T	M		F	T	
ART	0	2	2		0	2	2	
BIOLOGY	2	2	4		2	2	4	
BUSINESS ADMIN	2	1	3		2	0	2	
CHEMISTRY	3	1	4		3	1	4	
COMPUTER SCIENCE	3	0	3		2	0	2	
DRAMATICS & SPEECH	1	2	3		1	1	2	
ENGLISH	2	1	3		3	2	5	
HISTORY	2	1	3		2	1	3	
MODERN FOREIGN LANG	2	3	5		2	2	4	
MATHEMATICS	2	2	4		2	3	5	
MUSIC	3	2	5		3	2	5	
PHYSICS	5	0	5		4	0	4	
POLITICAL SCIENCE	1	1	2		1	1	2	
PSYCHOLOGY	2	2	4		2	2	4	
RELIGION & PHIL. STUDIES	0	1	1		0	1	1	
SOCIOLOGY	0	1	1		1	1	2	
SPECIAL EDUCATION	0	1	1		0	0	0	
TEACHER CERTIFICATION	0	1	1		0	1	1	
TOTALS	30	24	54		30	22	52	

Table 3.5: Profile of Highest Earned Degree For Full-Time Instructional Faculty

Fall Semester, 2005			
	MASTERS	DOCTORATE	TOTAL
BUA	0	2	2
HFA	8	11	19
NSM	3	16	19
SSC	1	11	12
TOTAL	12	40	52
(%)	(22%)	(78%)	(100%)

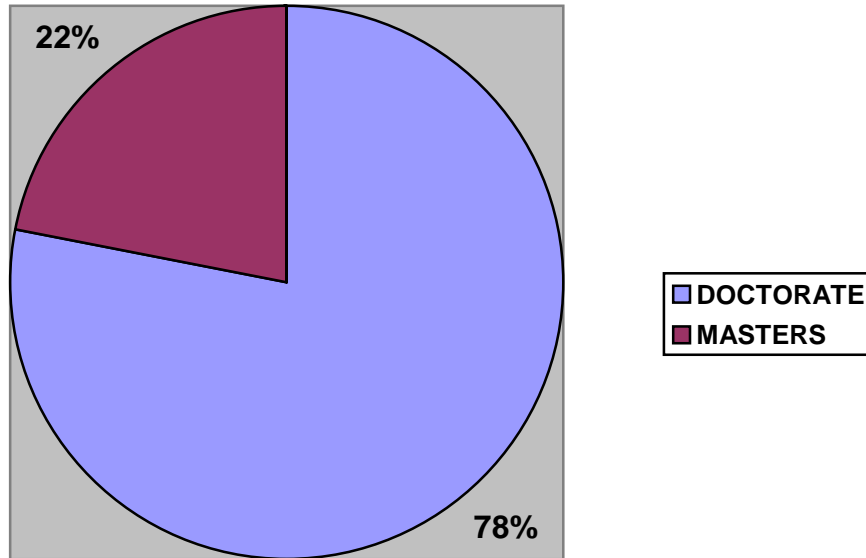


Table 3.6: Distribution of Academic Rank of Full-Time Instructional Faculty by Division

Fall Semester, 2005

	Professor	Associate Professor	Assistant Professor	Instructor	Lecturer / Other	Total
BUA	0	1	1	0	0	2
HFA	0	8	6	0	3	19
NSM	3	14	0	0	2	19
SSC	3	3	3	0	3	12
TOTALS	6	25	10	0	8	52
(%)	(11.5%)	(48.1%)	(19.2%)	(0%)	(15.3%)	(100.0%)

Figure 3.2 Profile of Academic Rank for Full-Time Faculty

Fall Semester, 2005

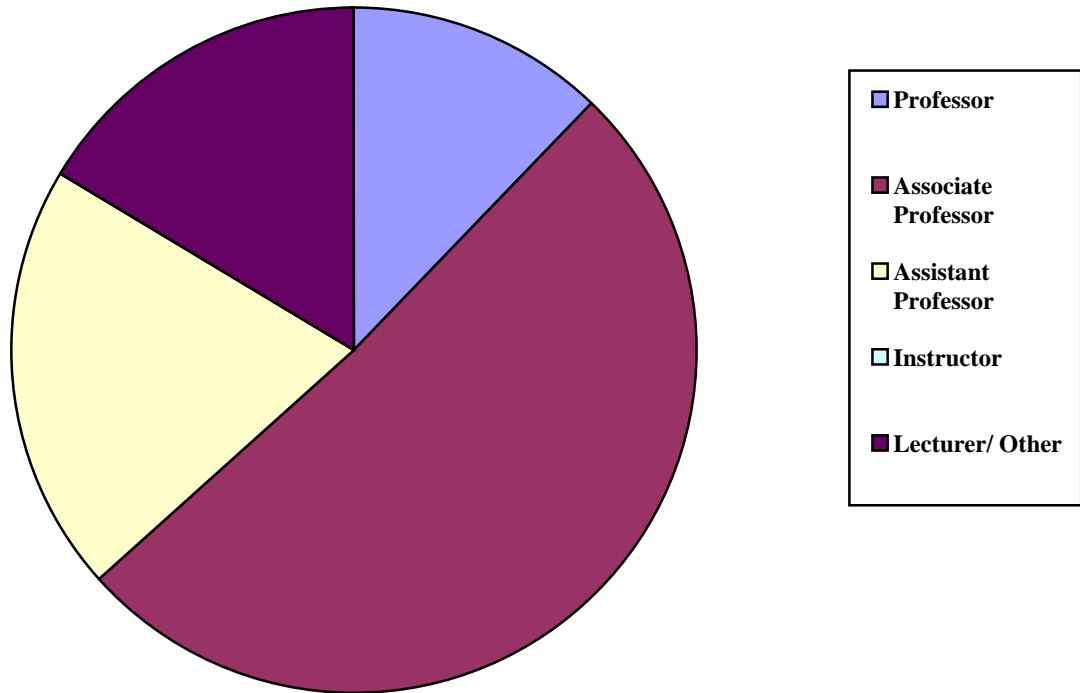


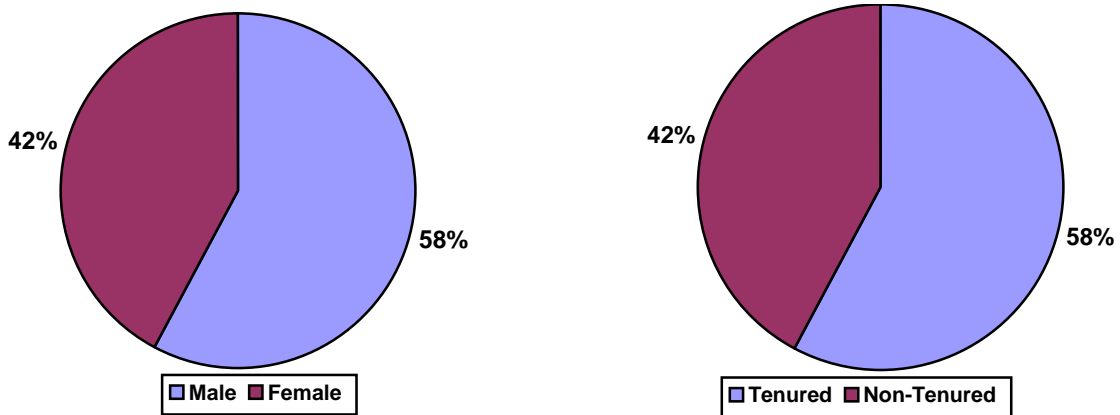
Table 3.7 Distribution of Gender and Tenure for Full-Time Instructional Faculty by Division

Fall Semester, 2005

	MALE		FEMALE		TOTALS	
	T	NT	T	NT	T	NT
BUA	1	1	0	0	1	1
HFA	5	4	3	7	8	11
NSM	10	3	5	1	15	4
SSC	3	3	3	3	6	6
SUBTOTALS	19	11	11	11	30	22
					(57.6%)	(42.3%)
TOTALS	30		22		52	
(%)	(57.6%)		(42.3%)		(100.0%)	

Figure 3.3: Profile of Gender and Tenure for Full-Time Instructional Faculty

Fall Semester, 2005

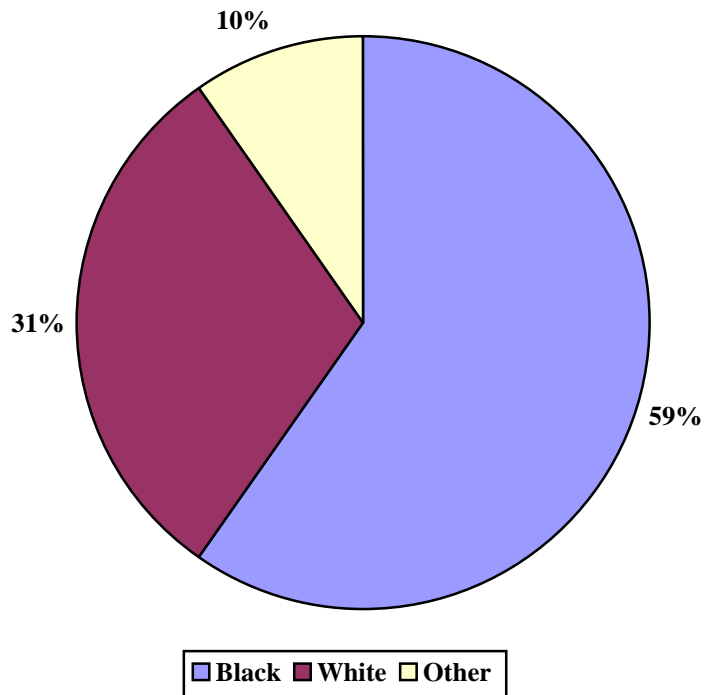


**Table 3.8: Distribution of Race for Full-Time Instructional Faculty by Division
Fall Semester, 2005**

	BLACK	WHITE	OTHER	TOTAL
BUA	1	0	1	2
HFA	11	8	0	19
NSM	10	5	4	19
SSC	9	3	0	12
TOTALS	31	16	5	52
	(59.6%)	(30.7%)	(9.6%)	(100%)

Figure 3.4 Profile of Race for Full-Time Faculty

Fall Semester, 2005



**Table 3.9: Distribution of Full-Time Instructional Faculty by Rank, Race and Gender
Fall Semesters, 2004 and 2005**

MALE

	2004				2005			
	B	W	O	TOTAL	B	W	O	TOTAL
PROFESSOR.	2	3	1	6	2	2	1	5
ASSOCIATE PROFESSOR	8	5	3	16	9	4	4	17
ASSISTANT PROFESSOR.	4	1	0	5	3	1	0	4
INSTRUCTOR	0	0	0	0	0	0	0	0
LECTURER	3	1	0	4	2	2	0	4
OTHER	0	0	0	0	0	0	0	0
TOTAL	17	10	4	31	14	8	4	30

FEMALE

	2004				2005			
	B	W	O	TOTAL	B	W	O	TOTAL
PROFESSOR	0	0	0	0	1	0	0	1
ASSOCIATE PROFESSOR	9	1	1	11	7	1	1	9
ASSISTANT PROFESSOR	4	4	0	8	2	4	0	6
INSTRUCTOR	0	0	0	0	0	0	0	0
LECTURER	3	1	0	4	4	1	0	5
OTHER	0	0	0	0	1	0	0	1
TOTAL	16	6	1	23	15	6	1	22

Table 3.11: Distribution of Full-Time Instructional Faculty by Highest Degree Earned, Race and Gender

Fall Semesters, 2004 and 2005

	MALE							
	2004				2005			
	Black	White	Other	TOTAL	Black	White	Other	TOTAL
DOCTORATE	12	9	4	25	12	8	5	25
MASTERS	4	1	0	5	4	1	0	5
TOTAL	16	10	4	30	16	10	4	30

	FEMALE							
	2004				2005			
	Black	White	Other	TOTAL	Black	White	Other	TOTAL
DOCTORATE	10	4	1	15	10	4	1	15
MASTERS	7	2	0	9	5	2	0	7
TOTAL	17	6	1	24	15	6	1	22

SOURCE: Banner Data

Table 3.13: Instructional and Non-Instructional Full-Time and Part-Time Faculty: Fall Semester, 2004

Division/Program	FT Faculty	PT Faculty ¹	FT (FTE)	PT (FTE) ²	TOTAL FTE
BUA	2	2 (12 hrs)	2	1	3
HFA	19	10 (44 hrs)	19	3.6	22.68
NSM	19	7 (33 hrs)	19	2.7	21.7
SSC	12	13 (63 hrs)	12	5.2	17.2
CORE ³	0	7 (48 hrs)	0	4	4
HONORS ³	0	0(0 hrs)	0	0	0
TOTAL	52	39 (200 hrs)	52	16.5	68.5

¹This column gives both the part-time faculty headcount and the number of credit hours taught by part-timers in the academic area

²Part-time FTEs are calculated by dividing the number of credit hours taught by part-time faculty by 12, which is a full-time teaching load.

³Since full-time faculty instructors are associated with a Division, not Core or Honors, it somewhat misleadingly appears that for these latter programs there are no faculty who are employed full-time. In actuality fifteen full-time faculty taught one or more Core courses and three full-time faculty taught Honors courses

Source: Banner Data

GENERAL INFORMATION

QUICK FACTS

- Tuition and Fees, Fall Semester, 2005:

Tuition	\$6,240
Activity Fee	\$190
Technology Fee	\$160

- Estimated Academic Year Cost for on-campus student, 2005-06:

Tuition and Fees	\$ 13,180
Room and Board	\$ 6,730
Books and Supplies	\$ 1,000
Transportation	\$ 1,800
Personal Expenses	\$ 2,000
TOTAL	\$ 24,710

TUITION AND FEES

Table 4.1 Tuition and Student Activity Fee

1996-97 through 2005-06

	Student Activity Fee	Technology Fee	Tuition	Tuition And Fees
2005-06	380	320	12,480	13,180
2004-05	360	320	11,770	12,450
2003-04	335	300	10,900	11,535
2002-03	310	-	10,090	10,400
2001-02	300	-	9,489	9,789
2000-01	300	-	8,740	9,040
1999-00	290	-	8,480	8,770
1998-99	270	-	8,000	8,270
1997-98	250	-	7,500	7,750
1996-97	250	-	7,078	7,328

Figure 4.1 Tuition and Student Fees: 1996-97 through 2005-06

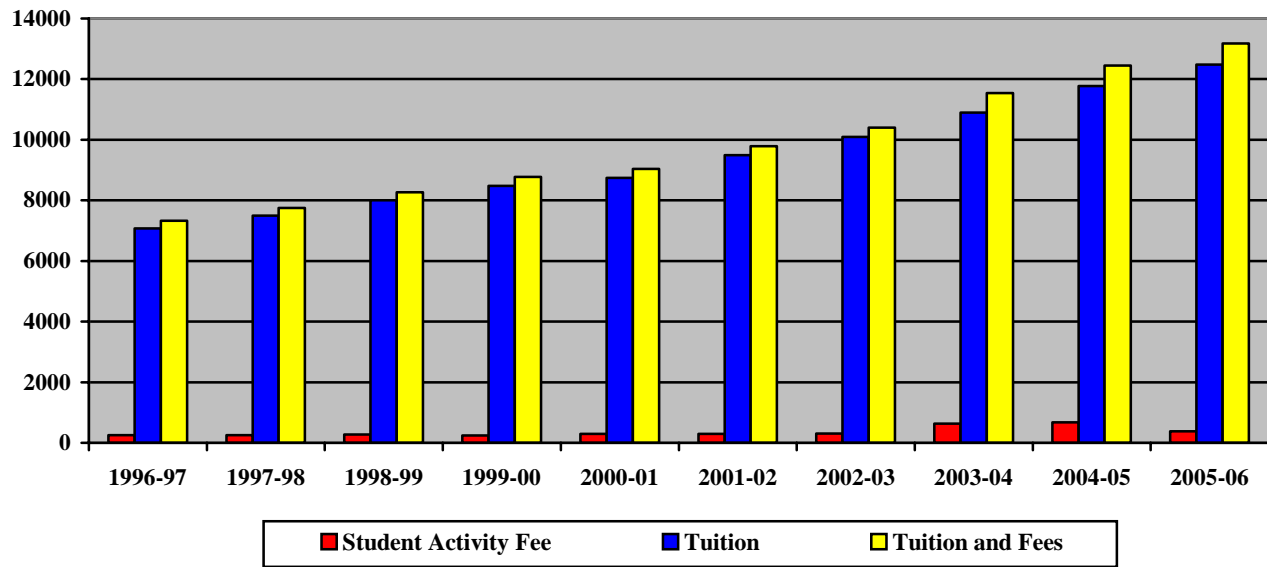


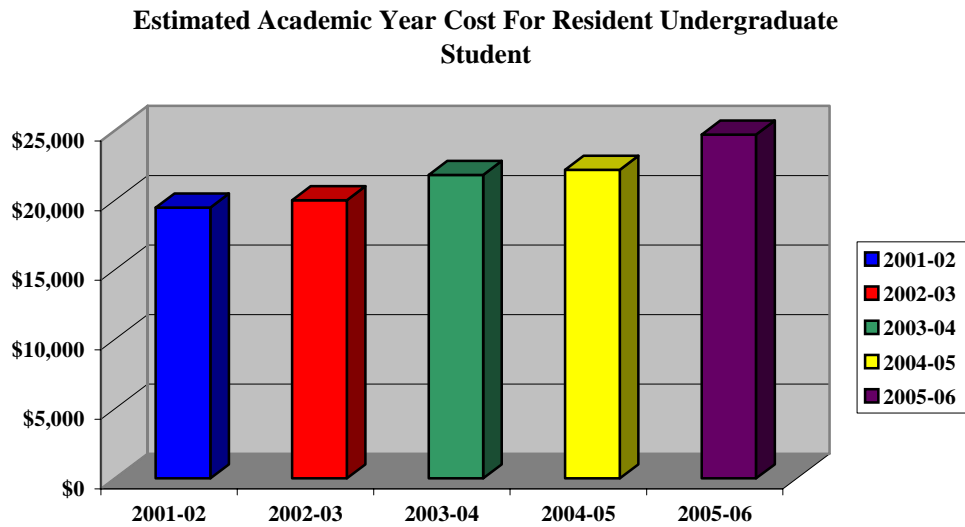
Table 4.2 Estimated Academic Year Cost for Resident Undergraduate Student

2001-2002 to 2005-06

	2001-02	2002-03	2003-04	2004-05	2005-06
Tuition & Fees	\$9,789	\$10,400	\$11,535	\$12,450	\$12,480
Room and Board	\$5,182	\$5,340	\$5,770	\$6,230	\$6,730
Books and Supplies	\$1,000	\$1,000	\$1,000	\$1,000	\$1,000
Transportation	\$1,700	\$1,450	\$1,450	\$1,000	\$1,800
Personal Expenses	\$1,800	\$1,800	\$2,050	\$1,500	\$2,000
Total Estimated Cost	\$19,471	\$19,990	\$21,805	\$22,180	\$24,710

NOTE: The estimated academic year cost is used to determine a student's financial aid need

Figure 4.2 Tuition and Student Fees: 2001-2002 to 2005-06

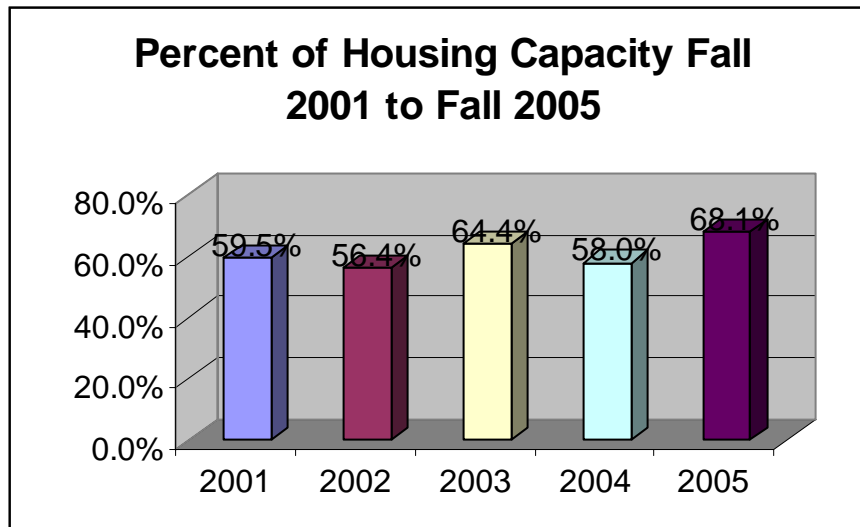


Housing

Table 4.3 Capacity and Occupancy: 2001-2005

	Crosthwaite	Jubilee	Livingstone	Shane	Total
Capacity	206	148	226	271	851
Fall 2005 Occupancy	140	137	126	177	580
(% Capacity)	(24.1%)	(25.5%)	(21.7%)	(30.5%)	(68.1%)
Capacity	206	146	220	324	896
Fall 2004 Occupancy	140	117	63	206	526
(% Capacity)	(68.0%)	(80.0%)	(29.0%)	(64.0%)	(58.0%)
Capacity	206	146	220	324	896
Fall 2003 Occupancy	140	138	112	187	577
(% Capacity)	(68%)	(93%)	(51%)	(58%)	(64.4%)
Capacity	206	146	220	324	896
Fall 2002 Occupancy	90	131	137	147	505
(% Capacity)	(43.7%)	(89.7%)	(62.3%)	(45.4%)	(56.4%)
Capacity	0	146	220	324	896
Fall 2001 Occupancy	NA	124	163	246	533
(% Capacity)	NA	84.9%	74.1%	75.9%	59.5%

Figure 4.2 Student Housing Occupancy



FACILITIES

Table 4.4 University Buildings by Square Footage

Building Name	Gross Square Footage	Year Constructed	Year of Last Major Renovation
Adult Student Complex	5,800	1992	-
Basic College	7,925	1955	
Biology Research Lab	1,600	1993	
Boyd House	2,762	1921	1996
Burrus Hall	6,620	1935	
Carnegie	11,994	1907	1994
Cravath	24,520	1929	2002
Crosthwaite Residence Hall	47,086	1962	2002
DuBois	33,189	1959	
Faculty Apartments	41,784	1969	
Harris House	2,868	1876	
Honors Program Building	3,376	1992	-
Johnson Gymnasium	27,552	1946	-
Jubilee Residence Hall	55,392	1873	
Library and Learning Center	74,610	1969	-
Little Theatre	2,685	1888	
New Livingstone Residence hall	52,217	1962	-
Memorial Chapel	10,008	1892	1992
Park-Johnson	32,595	1953	2001
President's Residence	4,510	1969	-
Race Relations Institute	2,500	1945	-
Richardson Alumni House	1,690	1905	
Science Lab Building	3,600	1973	-
Shane Residence Hall	86,680	1973	
Adams K. Spence	31,238	1953	
Talley-Brady Chemistry Building	30,021	1931	1991
Van Vechten Gallery	7,460	1881	

STUDENT AFFAIRS

Table 4.5 Fraternities and Sororities: 2004-05

Social Organization	Year Established On Campus
Fraternities	
OMEGA PSI PHI, Eta Psi Chapter	1926
ALPHA PHI ALPH, Alpha Chi Chapter	1927
PHI BETA SIGMA, Alpha Gamma Chapter	1927
Sororities	
ALPHA KAPPA ALPHA, Pi Chapter	1927
SIGMA GAMMA RHO, Alpha Upsilon Chapter	1945
ZETA PHI BETA, Kappa Gamma Chapter	1966

Table 4.6 Student Organizations

<u>Organization</u>	<u>Purpose</u>
---------------------	----------------

Student Governing Organizations

Pan Hellenic Council	Governing body of Greek organizations
Residence Hall Councils	Represents residents of and organizes residence halls
Student Government Association	Provides for student involvement in the institution
Freshmen Class	
Sophomore Class	
Junior Class	
Senior Class	
Student Athletic Advisory Committee	

Production Organizations

Fisk Forum	Student-run newspaper
The Spirit	Student publication of poetry and prose
Phi Mu Alpha Sinfonia	Men's Choral Group
Jazz Ensemble	Performance jazz group
Jubilee Singers	Fisk's premier performance group
Modern Black Mass Choir	Perform gospel works
Orchesis	Performing Dance Group
Oval	Student Year Book
Pep Squad	Promotes school spirit
Stagecrafters	Dramatic Performances
University Choir	Official Chapel Choir
Ladies of R.A.G.E. Dance Team	Performs dance routines primarily at half-time
WFSK Radio	Fisk University Operated
Fisk Television	Fisk University Operated

Honor Societies

BETA KAPPA CHI	Recognizes Achievement and excellence in all sciences
MORTAR BOARD	Recognizes Support scholarship in all fields of study
PHI BETA KAPPA	Recognizes undergraduate achievement in liberal arts
SIGMA XI	Recognizes achievement in scientific research

Table 4.6 Student Organizations – Continued

Organization	Organization	
<u>Departmental Honoraries</u>		
ALPHA GAMMA MU	Foreign Languages	
ALPHA KAPPA DELTA	Sociology	
DELTA MU DELTA	Business	
LAMDA IOTA TAU	Literature	
PSI CHI	Psychology	
Pi Sigma Alpha	Political Science	
W.E.B. DuBois Honors Program	University Honors Program	
<u>Departmental and Professional Societies</u>		
Business Club	Promotes Application of business practices	
Pre-Health Careers Club	Promotes student interests in pursuing health careers	
Psychology Club	Promotes interaction between students and faculty in psychology	
Spanish Club	Promotes interest in the language and culture of Spain	
Tanner Art Society	Fosters support and interest in the arts	
Teacher Education Club	Promotes interest in careers in teaching	
French Club	Promotes interest in the language and culture of France	
Investment Club		
Sociology Club	Promotes interaction between students and faculty in sociology	
Political Science Club	Promotes interaction between students and faculty in political science	
Society of Physics Students	Promotes interaction between students and faculty in physics	
Alpha Phi Omega	National Service Organization	
Phi Mu Alpha, Zeta Rho Chapter (Sinfonic Club)	Professional Music Fraternity for Men	
National Organization for the Professional Advancement of Black Chemists and Chemical Engineers	Promotes interest in chemistry and related fields	
<u>Geographical Clubs and Organizations</u>		
Arkansas Club	Kentucky Club	
Chicagoland Club	St. Louis Club	
Dillard/Xavier Club	Michigan Club	
DC/MD/VA Club	Ohio Club	
Georgia Club	Tennessee Club	
<u>Religious and Spiritual Organizations</u>		
Baptist Student Union	Royal Life Ministry	
Chapel Assistants	Wesley Foundation	
Every Nation Campus Ministries	Y.E.S. Ministries (Young Excited and Saved)	
IMANI Praise Team (Religious Interpretive Dance Group)		
LIFT		
Mt. Zion College Ministry		
Muslim Students Association		
Nation of Islam Students		
Pentecostal Tabernacle Club		
<u>Political, Sports and Social Organizations</u>		
Big Sister Mentoring and Etiquette	Highlighter Club	Race Relations Student Org.
Honda Campus All-Star Challenge	Pep Squad	The Black Research Coalition
Cheerleaders	Kings of '07	White Gloves and Silver Spoons
NAACP	Perfect Gentlemen	Women of Perfection
Recycle Club	Anti Apathy	

Cultural Organizations

African Student Association
Caribbean Student Union

International Student Association

Other

FUSA (Fisk University Student Ambassadors)
Pre-Alumni Club
Students In Free Enterprise (SIFE)
Collegiate 100
Target Hope
Young Scholars Club

Admissions support group. Provides official University tours.
Alumni-In-Training program
Promotes interest in free enterprise

INSTITUTIONAL ADVANCEMENT

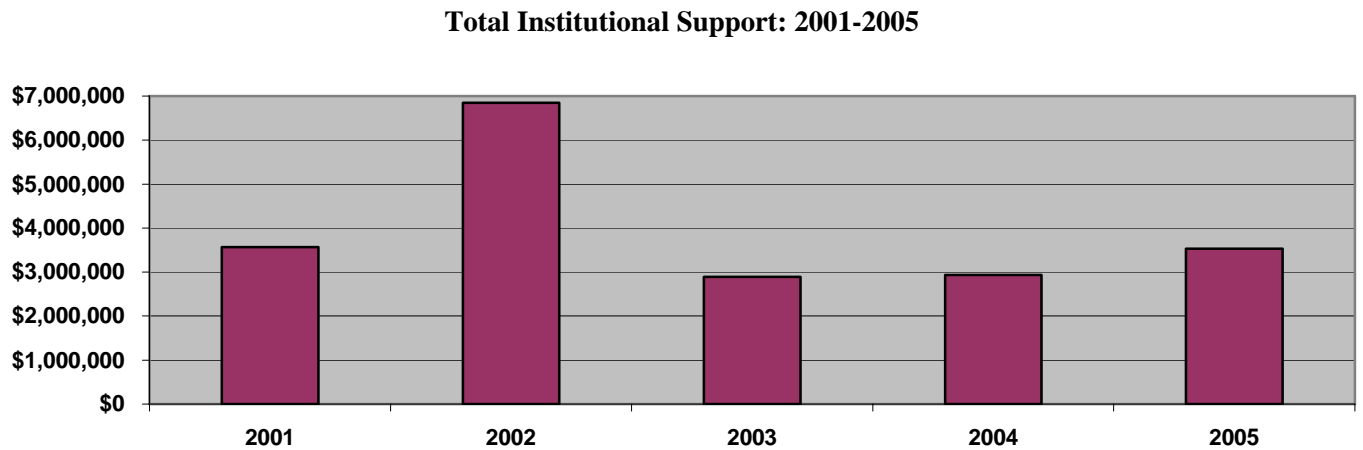
The Office of Institutional Advancement is responsible for generating gifts from the private sector to increase contributions and constituent support to accomplish the mission and goals of the University. This Office also serves as the liaison for all fundraising initiatives including the General Alumni Association.

Sources of Support

Table 4.7 Sources of Major Institutional Support – Fiscal Years 2001-2005

Source	2001	2002	2003	2004	2005
Alumni	1, 231, 605	877,299	794,899	622,708	773,217
Non-Alumni	459,909	4,232,950	321,935	383,198	144,029
Corporations	428,912	489,561	501,329	460,359	279,210
Foundations	657,451	178,212	536,065	177,050	485,992
Other	792,333	1,069,266	736,772	1,276,145	1,818,008
TOTAL	3,570,210	6,847,288	2,891,000	2,937,558	3,531,705

Figure 4.7 Private Gifts and Grants – Fiscal Years 2001-2005



ALUMNI**Table 4.8 Geographical Distribution of Alumni – as of November 2005**

STATE		STATE		STATE	
Alabama	212	Maine	5	Oregon	15
Alaska	3	Maryland	3521	Pennsylvania	150
Arizona	30	Massachusetts	72	Rhode Island	2
Arkansas	42				
California	522	Michigan	301	South Carolina	93
Colorado	27	Minnesota	30	Tennessee	1126
Connecticut	52	Mississippi	83	Texas	386
Delaware	29	Missouri	163	Utah	0
District of Columbia	157	Montana	1	Vermont	0
Florida	289	Nebraska	7	Virginia	188
Georgia	572	Nevada	23	Washington	26
Hawaii	8	New Hampshire	4	West Virginia	4
Idaho	1	New Jersey	159	Wisconsin	44
Illinois	479	New Mexico	6	Wyoming	1
Indiana	153	New York	310		
Iowa	4	North Carolina	166		
Kansas	23	North Dakota	0	Puerto Rico	0
Kentucky	88	Ohio	366	Virgin Island	20
Louisiana	97	Oklahoma	50		
				TOTAL	6940

Table 4.9 Foreign Country Residence of Alumni, as of November 2005

COUNTRY	NUMBER
APO	3
Bahamas	51
Bermuda	0
British West Indies	1
Canada	5
China	2
England	1
Germany	2
Jamaica	1
Mexico	0
Nigeria	2
South Africa	1
Sweden	0
West Indies	3
Zimbabwe	2
	TOTAL

74

Table 4.10 Alumni Clubs, as of November 2005

LOCATION	STATE	CLUB PRESIDENT/CONTACT
Atlanta	GA	Linda L. Smith '81
Austin	TX	Trent Spears '02
Nassau	Bahamas	Judson F. Eneas, MD '67
Baltimore	MD	Peter Buchanan '54
Birmingham	AL	Newstell Dowdell '53
Chicago	IL	Eleta J. Murray '74
Cincinnati	OH	Anna E. Hutchinson '96
Cleveland	OH	Robert Wiley '76
Dallas	TX	Vincent Leal '76
Gary/NW Indiana	IN	Chester Bell '52
Hampton Roads Club	VA	George Tillerson, III '67
Houston	TX	Dr. Harold B. Crawford '65
Huntsville	AL	David Points '77
Indianapolis	IN	Raymond O. Pierce '51
Los Angeles	CA	Elroy Bond '57
Memphis	TN	Jeannette McKinley '96
Miami	FL	Brenda Benedict Lee '68
Milwaukee	WI	Helen Kelley '52
Nashville	TN	Faye Weaver '67
New York/New Jersey	NY/NJ	Karen Maynard '82
Oakland/San Francisco Area	CA	Alphonso Campbell '54
Philadelphia	PA	Vivian Gonzalez '69
Washington DC	MD	Gloria Elliott '72
Executive Director (Acting)		Adrienne T. Latham '68

Table 4.13 General Alumni Association of Fisk University – Board of Trustees 2005

OFFICERS	BOARD
Chairman Will J. Carter '57	Denise C. Bridgeford-Lightner, MD '86 Andrew L. Brown Jr. '85 Linda Brown Coleman, Ph.D. '70
Vice Chair Carita Harrison Reaves '68	Tena Walton Gardner '65 Vivian Gonzalez '69 P. Gregory Johnson '70
Treasurer Elna Green Benefee '63	Grace Kelly-Driver '55 Sandra Lawson, Ph.D. '67 Sharon Wilson Murphy '72
General Counsel Denise Billye Sanders, JD '74	Donna Daniels Rice '64 William E. Settle '77 Linda L. Smith '81
Secretary Janis Edwards Marley '68	Genevieve M. Stewart '70 Samuel L. Williams, Jr. '68 Stephanie V. Williams '72
Parliamentarian Andrew L. Brown, Jr. '85	

FINANCES

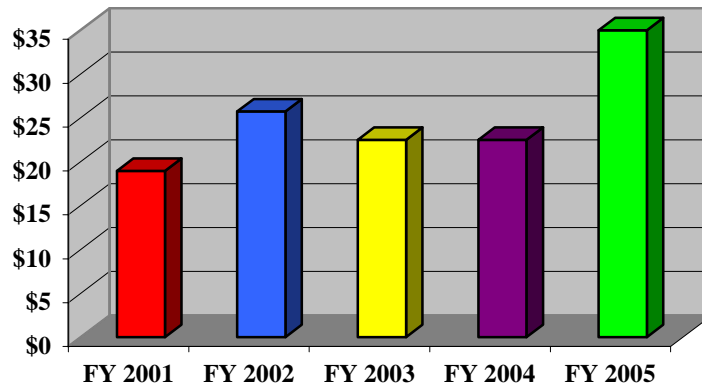
FINANCIAL PROFILE

CURRENT FUND REVENUES, EXPENDITURES AND BALANCES

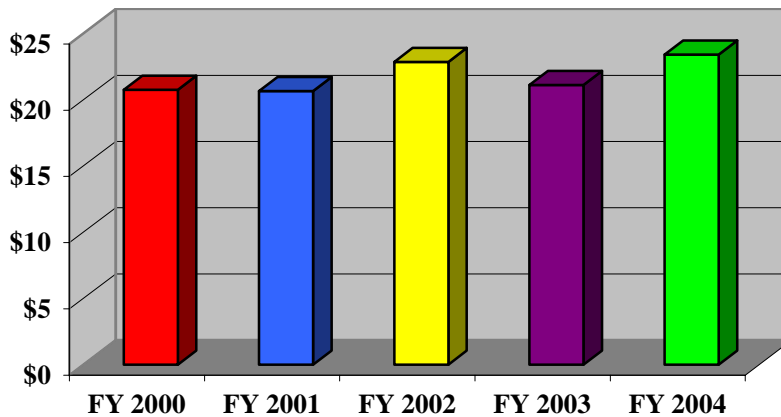
FY 2000 through FY 2004

Figure 5.1 Current Fund Revenues, Expenditures and Balances

TOTAL CURRENT FUND REVENUES



TOTAL CURRENT FUND EXPENDITURES



TOTAL CURRENT FUND BALANCE

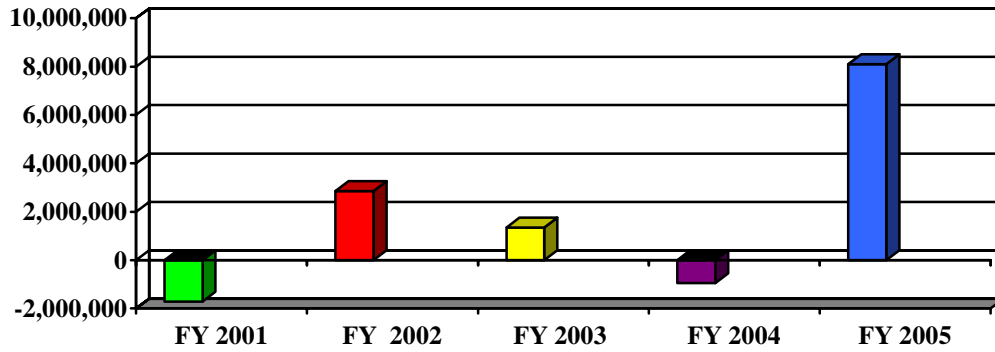


Table 5.1 Current Fund Revenues, Expenditures and Balances

	FY 2001	FY 2002	FY 2003	FY 2004	FY 2005
TOTAL CURRENT FUND REVENUES	\$18,941,372	\$25,717,380	\$22,472,189	\$22,462,503	\$34,958,704
TOTAL CURRENT FUND EXPENDITURES	\$20,654,495	\$22,855,248	\$21,124,685	\$23,408,657	\$26,857,225
CURRENT FUND BALANCE	(\$1,713,123)	\$2,862,132	\$1,347,504	(\$946,154)	\$8,101,479

SOURCE: Financial Affairs

CURRENT FUND REVENUES

FY 2001 through FY 2005

Figure 5.2 Current Fund Revenues, Five-Year Average: FY 2001-FY 2005

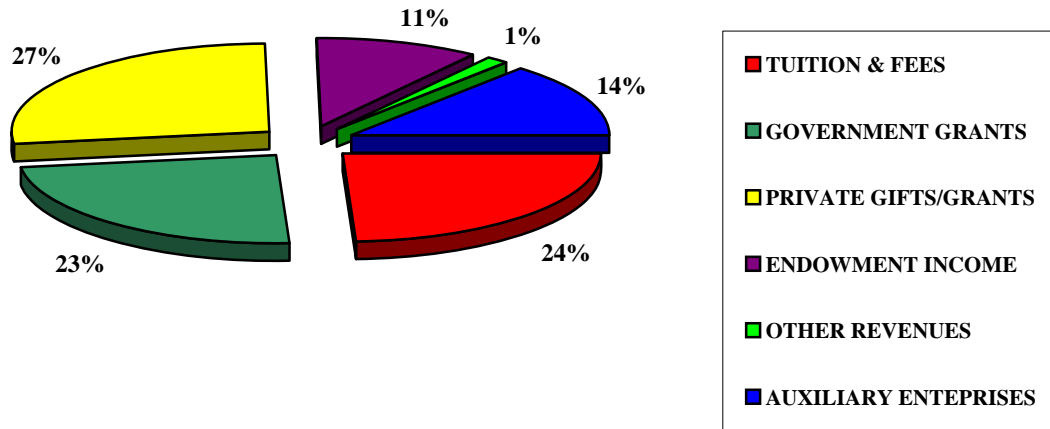


Table 5.2 Current Fund Revenues

	FY 2001	FY 2002	FY 2003	FY 2004	FY 2005
TUITION & FEES	\$3,877,536	\$6,083,519	\$6,299,054	\$6,935,345	\$7,212,667
GOVERNMENT GRANTS	5,690,938	4,486,459	5,535,492	5,831,815	\$7,782,769
PRIVATE GIFTS/GRANTS	6,412,283	11,962,184	5,830,833	4,750,259	\$4,750,259
ENDOWMENT INCOME	(1,057,058)	41,034	1,387,208	994,122	\$11,798,417
OTHER REVENUES	688,270	309,678	387,983	300,217	0
TOTAL EDUCATION & GENERAL REVENUES	\$15,611,969	\$22,882,874	19,440,570	18,811,758	\$21,544,112
AUXILIARY ENTERPRISES	\$3,329,403	\$2,834,506	\$3,031,619	\$3,650,745	\$3,388,076
TOTAL CURRENT FUND REVENUES	\$18,941,372	\$25,717,380	\$22,472,189	\$22,462,503	\$34,958,704

SOURCE: Financial Affairs

EDUCATION AND GENERAL REVENUES

FY 2001 through FY 2005

Figure 5.3 Education and General Revenues, Five-Year Average: FY 2001-FY 2005

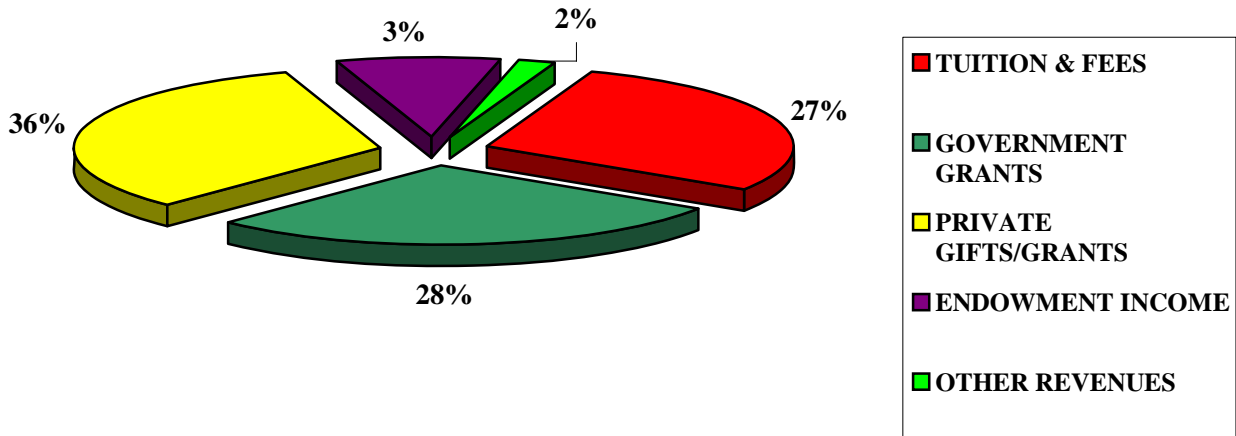


Table 5.3 Percent Distribution Of Total Educational And General Revenues:

	FY 2001	FY 2002	FY 2003	FY 2004	FY 2005
TUITION & FEES	25%	27%	32%	37%	23%
GOVERNMENT GRANTS	36%	20%	28%	31%	25%
PRIVATE GIFTS/GRANTS	41%	52%	30%	25%	15%
ENDOWMENT INCOME	-7%	0%	7%	5%	37%
OTHER REVENUES	4%	1%	2%	2%	0%
TOTAL EDUCATION & GENERAL REVENUES	\$15,611,969	\$22,882,874	19,440,570	18,811,758	\$31,544,112
FULL YEAR FTE ENROLLMENT	861	806	853	879	871
E&G REVENUES PER STUDENT	\$18,132	\$28,391	\$22,791	\$21,401	24,735

SOURCE: Financial Affairs

CURRENT FUND EXPENDITURES

FY 2000 through FY 2004

Figure 5.4 Current Fund Expenditures, Five-Year Average: FY 2000 - FY 2004

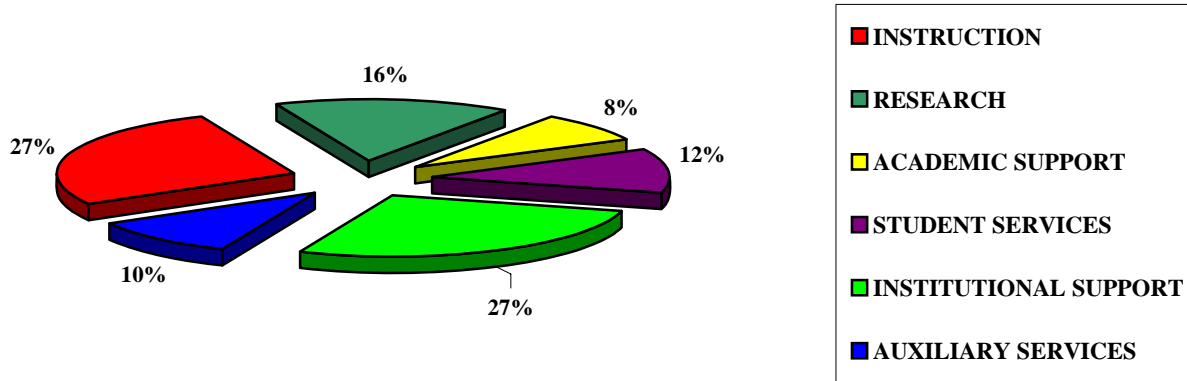


Table 5.4 Current Fund Expenditures

	FY 2001	FY 2002	FY 2003	FY 2004	FY 2005
INSTRUCTION	\$5,953,740	\$6,226,239	\$7,139,481	\$5,536,460	\$5,817,705
RESEARCH	3,708,986	3,401,923	2,516,881	3,291,193	\$5,711,061
ACADEMIC SUPPORT	1,096,190	1,149,324	1,598,815	2,475,797	\$2,917,228
STUDENT SERVICES	2,131,265	2,540,941	2,550,763	2,972,681	\$3,270,260
INSTITUTIONAL SUPPORT	5,447,269	6,506,671	4,397,241	7,497,297	\$7,424,819
SCHOLARSHIPS/FELLOWSHIPS	-	-	-	-	-
TOTAL E & G EXPENDITURES	18,337,450	19,825,098	18,203,181	21,773,428	\$25,141,073
AUXILIARY SERVICES	2,317,046	3,030,150	2,921,504	1,635,229	\$1,716,152
TOTAL CURRENT FUND EXPENDITURES	\$20,654,496	\$22,855,248	\$21,124,685	\$23,408,657	\$26,857,225

SOURCE: Financial Affairs

EDUCATION AND GENERAL EXPENDITURES
PERCENT DISTRIBUTION

FY 2001 through FY 2005

Figure 5.5: Percent Distribution of Education and General Expenditures

Five-Year Average: FY 2001 - FY 2005

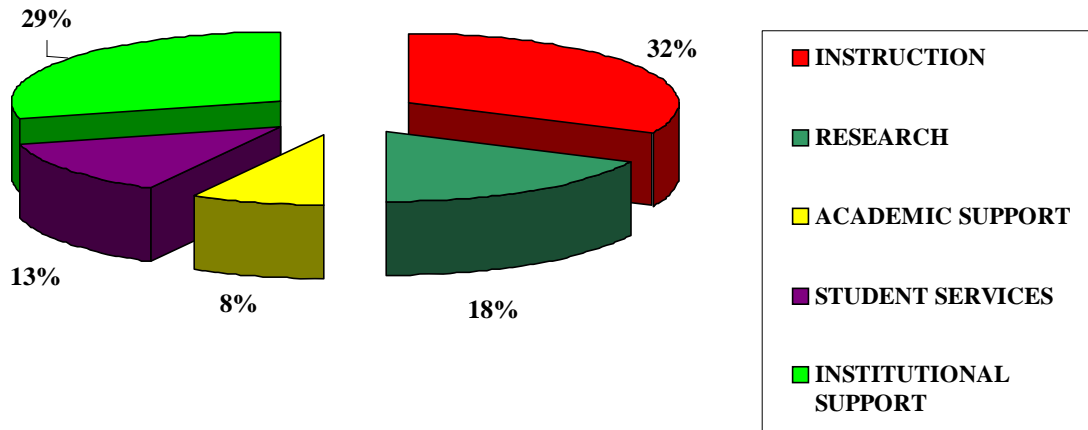


Table 5.5 Percent Distribution of Total Education and General Expenditures

	FY 2001	FY 2002	FY 2003	FY 2004	FY 2005
INSTRUCTION	32%	31%	39%	25%	23%
RESEARCH	20%	17%	14%	15%	23%
ACADEMIC SUPPORT	6%	6%	9%	12%	12%
STUDENT SERVICES	12%	13%	14%	14%	13%
INSTITUTIONAL SUPPORT	30%	33%	24%	34%	30%
SCHOLARSHIPS/FELLOWSHIPS	-	-	-	-	-
TOTAL E & G EXPENDITURES + MT	18,337,450	19,825,098	18,203,181	21,773,428	\$25,141,073

SOURCE: Financial Affairs

Year Ended June 30, 2005

**STATEMENTS OF CURRENT FUNDS, REVENUES,
EXPENDITURES, AND OTHER CHANGES**

(With Comparative Totals for FY2004)

Table 5.6 Statements of Current Funds, Revenues, Expenditures, and Other Changes

REVENUES:		2004	2005
	TUITION AND FEES***	6,935,345	7,212,657
	PRIVATE GIFTS AND GRANTS	4,750,259	4,573,434
	GOVERNMENT GRANTS/CONTRACTS	5,831,815	7,782,769
	INVESTMENT INCOME	994,122	11,636,916
	SALES/AUXILIARY ENTERPRISES	3,650,745	3,338,076
	OTHER INCOME	300,217	203,351
	TOTAL REVENUES	\$22,462,503	\$34,958,704

EXPENSES:		2004	2005
	INSTRUCTION	5,536,460	5,817,705
	RESEARCH	3,291,193	5,711,061
	ACADEMIC SUPPORT	2,475,797	2,917,228
	STUDENT SERVICES	2,972,681	3,270,260
	INSTITUTIONAL SUPPORT	7,497,297	7,424,810
	EXPENSES/AUXILIARY ENTERPRISES	1,635,229	1,716,152
	TOTAL EXPENSES	\$23,408,657	\$26,857,225
	CHANGE IN ASSETS	(\$946,154)	\$8,101,479

SOURCE: FY 2004 and FY 2005 Audit Reports

*** Tuition and fees do not include scholarships and fellowships, which were \$2,802,138 for 2004 and \$2,949,644 for 2005