

DECEMBER
2004

OFFICE OF INSTITUTIONAL RESEARCH

FISK UNIVERSITY

The Fact Book 2004-2005

Fisk University
Nashville, TN 37208-3051

<i>INTRODUCTION</i>	1
QUICK FACTS	2
A STATEMENT OF PURPOSE	3
THE MISSION	3
BOARD OF TRUSTEES	4
HIGHLIGHTS OF FISK’S HISTORY	5
PRESIDENTS OF FISK UNIVERSITY	8
ORGANIZATIONAL CHART	9
ADMINISTRATION	10
ACADEMIC CALENDAR	12
<i>STUDENT AND ACADEMIC PROGRAM PROFILE</i>	14
QUICK FACTS	15
ADMISSIONS	17
FINANCIAL AID	22
ENROLLMENT	24
MAJOR PROGRAMS	29
CREDIT HOURS	30
CLASS SIZE	34
ACADEMIC ACHIEVEMENT	35
DISTRIBUTION OF GRADES	37
DEGREES CONFERRED	38
RETENTION AND GRADUATION RATES	43
<i>FACULTY/STAFF PROFILES</i>	44
QUICK FACTS	45
FISK UNIVERSITY INSTRUCTIONAL FACULTY	46
RESEARCH FACULTY AND STAFF	50
FACULTY STATISTICS	51
<i>GENERAL INFORMATION</i>	58
HOUSING	62
FACILITIES	63
STUDENT AFFAIRS	64

INSTITUTIONAL ADVANCEMENT 67
ALUMNI..... 70
***FINANCES*..... 71**
HIGHLIGHTS OF FY 2003 72
FINANCIAL PROFILE 72
CURRENT FUND REVENUES, EXPENDITURES AND BALANCES 73
CURRENT FUND REVENUES 75
EDUCATION AND GENERAL REVENUES 76
CURRENT FUND EXPENDITURES 77
PERCENT DISTRIBUTION OF 78
EDUCATION AND GENERAL EXPENDITURES 78
STATEMENTS OF CURRENT FUNDS, REVENUES,..... 79
EXPENDITURES, AND OTHER CHANGES 79

INTRODUCTION

The Fisk University Fact Book is an annual compilation of academic and financial statistical data about the university. It provides a snapshot of our operations that can be used to evaluate institutional effectiveness. The academic data is concentrated on the fall semester of the year, since this is the semester of record for most external reports. Certain functions, such as graduation and financial reporting, lend themselves to being expressed for the entire academic and fiscal years and are so reported

Fisk College and Normal School

- The Fisk College and Normal School opened for classes January 9, 1866.
-

Fisk University

- Fisk School was incorporated as Fisk University August 12, 1867.
 - The original Fisk Jubilee Singers departed Nashville October 6, 1871, to raise money for the University.
 - Jubilee Hall was formally dedicated in 1876, becoming the first permanent structure built in America for educating African Americans.
 - In 1930, Fisk became the first historically black college to gain accreditation by the Southern Association of Colleges and Schools.
 - Professional Accreditations:
 1. American Chemical Society
 2. National Association of Schools of Music
 3. Council of Graduate Schools
 4. International Assembly for Collegiate Business Education
 - Fisk University's Academic Calendar is based on the semester system.
 - Degrees offered are:
 - Bachelor of Arts
 - Bachelor of Music
 - Bachelor of Science
 - Master of Arts
-

Fisk University Rankings

U.S. News and World Report in its 2004 Edition of "America's Best Colleges" ranks Fisk University among the Tier 3 National Liberal Arts Colleges. The National Science Foundation ranks Fisk University as one of the highest per capita producers in the nation for the number of its African American Baccalaureates who go on to earn the Doctorate in the Natural Sciences. For the seventh consecutive year, Fisk is included in Princeton Reviews "Top 351 Colleges and Universities."

A STATEMENT OF PURPOSE

2004 Fisk University Fact Book

Since its founding in 1866, Fisk has committed itself to providing an excellent liberal arts education for students irrespective of race, gender, and religion. While from its earliest days the university has exhibited a concern for the needs and problems of black Americans, it has always been an academic haven to all citizens of America and the world. Indeed, of the eight members of the first graduating class, two were white and five were women. Fisk University's traditional mission of leadership development and support for pioneering research is conducted in an atmosphere of respect for ethnic diversity.

As the twenty-first century begins, opportunities for leaders from all ethnic segments of America

THE MISSION

are increasing. The cultural landscape of our world demands leaders who possess the skill, knowledge, vision and values that enable them to work effectively with others. Historically black institutions are among the best examples of colleges and universities that preserve cultural heritage, offer academic excellence and present leadership opportunities to black students and other ethnic groups.

The mission of Fisk University is to provide a liberal arts education of highest quality. The University's primary goal is to prepare students to be skilled, resourceful, and imaginative leaders who can effectively address the challenges of life in a technological society, a pluralistic nation and a multicultural world.

Table 1.1 Members of the Board of Trustees (2003-04 Academic Year)

Member	Resident City
Mrs. Paula A. Banks	Chicago, IL
Mrs. Carolyn J. Booker	Atlanta, GA
Mrs. Barbara L. Bowles	Chicago, IL
Dr. Leantin Bracks (faculty representative)	Nashville, TN
Mrs. Carolyn Hogan Byrd	Atlanta, GA
Mr. Davis H. Carr	Nashville, TN
Mr. Will J. Carter	Washington, DC
Mr. Virgis W. Colbert	Milwaukee, IL
Mr. Mike Curb	Nashville, TN
Mr. Dennis Deveaux (student representative)	Nashville, TN
Mr. Reynaldo P. Glover	Chicago, IL
Mr. Ernest G. Green	Washington, DC
Mrs. Ann B. Holliday	Wilmington, DE
Dr. Adrienne Lash Jones	Shaker Heights, OH
Mrs. Leatrice B. McKissack	Nashville, TN
Mr. Robert W. Norton	New York, NY
Mrs. Aaronetta Hamilton Pierce	San Antonio, TX
Dr. Thomas C. Rozzell	Falls Church, VA
Mr. Michael D. Shmerling	Nashville, TN
Ms. Yvonne E. Thompson	Holland, OH
Mr. Cal Turner	Nashville, TN
Mr. Walter C. Watkins, Jr.	Detroit, MI
Eugene A. White, M.D.	Shaker Heights, OH

HIGHLIGHTS OF FISK'S HISTORY

2004 Fisk University Fact Book

Table 1.2 Selected Events from Fisk's History

Year	Event
1865	John Ogden, the Reverend Erastus Milo Cravath, and the Reverend Edward P. Smith established the Fisk School in Nashville.
1866	On January 9, Fisk convened its first classes.
1867	On August 12, Fisk School was incorporated as Fisk University.
1871	On October 6, the original Jubilee Singers departed Fisk to raise money.
1873	January 1, groundbreaking ceremony held for Jubilee Hall.
1875	Reverend E. M. Cravath became the first President of Fisk University. Fisk graduated its first class consisting of eight students that included two women and two whites.
1876	Jubilee Hall was formally dedicated.
1878	Fisk's first Missionaries, Albert P. Miller and Andrew E. Jackson, graduated. Upon leaving the Mendi Mission, Miller in a short address left Fisk its motto: "Her Sons and Daughters Are Ever On The Alter."
1880	The Mozart Society, the first Musical Organization in Tennessee, was formed. In later years, the Society becomes the Fisk University Choir.
1882	Livingston Hall was erected through a \$60,000 gift by Mrs. Valerie Stone.
1883	The Fisk Herald began.
1884	The Fisk Alumni Association was founded.
1885	The Music Department was created.
1888	W.E.B. DuBois graduated.
1889	The Gymnasium and workshop (presently) Van Vechten Art Gallery) was created.
1891	Bennett Hall, named from the Reverend H.S. Bennett, was elected at the cost of \$25,000.
1892	Fisk Memorial Chapel was built with a legacy of \$25,000 from the estate of Clinton B. Fisk.
1893	First Football Team was organized.
1901	James G. Merrill became the second President of Fisk, in June.
1906	Chase Hall (Science Building) was erected on the site where the statue of W.E.B. DuBois now stands.
1908	The Carnegie Library (now the Academic Building) was erected.
1909	George A. Gates was elected third President of Fisk.
1915	Fayette A. McKenzie became the fourth President of Fisk.
1925	Fisk students strike against the Administration policies of President McKenzie on February 4.
1926	Thomas E. Jones was selected the fifth President of Fisk.
1927	The Fisk News was established as an Alumni Publication; Fisk celebrated its first Homecoming.
1930	Fisk became the first Historically Black College to gain accreditation by the Southern Association of Colleges and Schools.

Table 1.2 Selected Events from Fisk's History - Continued

Year	Event
1931	James Weldon Johnson was appointed to the Adam K. Spence Chair in Creative Writing.
1945	Effective July 1946, President Jones resigns.
1946	Charles S. Johnson was appointed the sixth and first black President of Fisk.
1948	The Fisk Forum, the student newspaper, was established.
1949	Georgia O'Keefe presented Fisk with the Alfred Stieglitz collection of Modern Art.
1952	Fisk became the first black college to be granted a charter to establish a chapter of the Phi Beta Kappa Honor Society.
1956	Charles S. Johnson dies, October 28.
1957	Stephen J. Wright was elected the seventh President of Fisk.
1960	The Nashville sit-in movement was organized by John Lewis, '67.
1966	Fisk held her Centennial Celebration.
1967	James R. Lawson was selected the eighth President of Fisk.
1969	The Modern Black Mass Choir was organized.
1972	Fisk attained an enrollment of 1559, the largest in the college's history.
1975	James Lawson resigned as President.
1977	Walter J. Leonard became the ninth President of Fisk.
1978	Fisk's entire campus was officially designated an historical district by the U.S. Department of Interior.
1980	The name, Jubilee Singers, became a registered trademark.
1981	The Jubilee Singers Memorial Bridge opened.
1984	Walter Leonard resigned as President of Fisk; Henry Ponder became the tenth President.
1988	Cecilia N. Adkins, '43, became the first woman elected chair of the Fisk University Board of Trustees.
1990	Fisk begins restoration of historic buildings after receiving an initial United States Congressional Grant.
1991	Fisk breaks ground for the Honors Building, the first new building in twenty years.
1996	The Historic Fisk Race Relations Institute is reestablished with a grant from the W.K. Kellogg Foundation; Henry Ponder resigns as President of Fisk.
1997	Rutherford H. Adkins became the eleventh President of Fisk.
1998	President Adkins dies February, after serving only eight months.
1999	John L. Smith, Jr. became the twelfth President of Fisk.
2001	Carolynn Reid-Wallace becomes the thirteenth President of Fisk.
2003	Carolynn Reid-Wallace resigns as President of Fisk.
2004	Charles Fuget became interim President of Fisk.

Source: Library, 1997 Homecoming Committee

PRESIDENTS OF FISK
UNIVERSITY

Erastus M. Cravath
1875 – 1900

James G. Merrill
1901 – 1908

George A. Gates
1909 – 1912

Fayette A. McKenzie
1915 – 1925

Thomas E. Jones
1926 – 1945

Charles S. Johnson
1946 – 1956

Stephen J. Wright
1957 – 1966

James R. Lawson
1967 – 1975

Walter J. Leonard
1977 – 1984

Henry Ponder
1984 – 1996

Rutherford H. Adkins
1997 – 1998

John L. Smith, Jr.
1999 – 2001

Carolynn Reid-Wallace
2001 – 2003

Hazel R. O'Leary
2004 - Present

ORGANIZATIONAL CHART

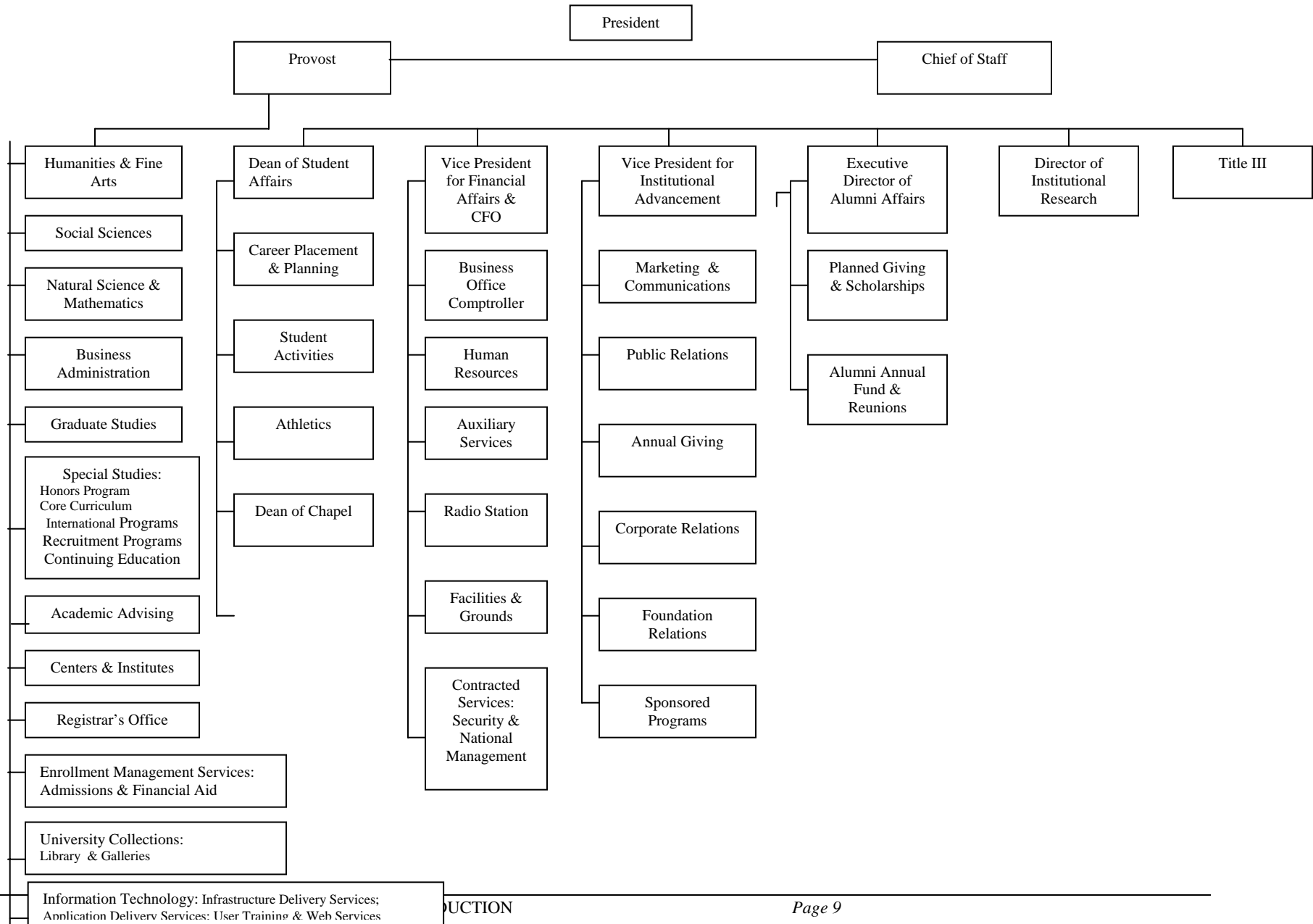


Table 1.3: Senior Administrators (Fall 2004)

Senior Administrators	AREA
	Office of the President
Hazel R. O'Leary	President
Angela Curry	University Counsel & Secretary to the Board
	Office of Financial Affairs
Amanda Fowler	VP for Finance and Chief Financial Officer
Michael Wilson	Comptroller
	Office of Administrative Services
Marie Lang	VP for Administrative Services
Jim Adams	Director, Facilities & Grounds
	INSTITUTIONAL ADVANCEMENT
Joan Bahner	Vice President for Institutional Advancement
Adrienne Latham	Director of Alumni Affairs
Vacant	Director of Advancement Services
Vacant	Director for Corporate & Foundation Relations
	Office of the Provost
Lean'tin Bracks	Provost and Dean of Academic Affairs
Debbie Thomas	Associate Provost for Institutional Effectiveness
Alfredo Cambrono	Director, Business Administration Division
Leantin Bracks	Director, Humanities & Fine Arts Division
W. Eugene Collins	Director, Natural Science & Mathematics Division
Reavis Mitchell	Director, Social Science Division
Princilla Evans	Director, Graduate Studies
James Quirin	Director, W.E.B. DuBois Honors Program
Vacant	Director, Race Relations Division
Enrique Silberman	Director, NASA Research Center
Victor Simmons	Curator, University Galleries
Jessie C. Smith	Director, Library & Learning Resource Center
Lisa Dixon	Registrar
Vacant	Director of Sponsored Programs
	Office of Information Services
John Springer	Chief Information Officer, Dir. of Institutional Research
Tsehay Demeke	Dir. of Academic Computing
Vacant	Dir. of Administrative Computing
	Student Affairs
Vacant	Dean of Student Affairs

Jason Meriwether	Associate Dean of Student Affairs
Sy Jones	Director, Career Planning & Placement
Lynwood Berry	Director, Orientation & Student Activities
Larry Glover	Director of Athletics
	Office of Admission
William Carter	Director of Admission
Vacant	Director of Financial Aid

Table 1.3: Senior Administrators - Continued

	NASA RESEARCH CENTER
Enrique Silberman	Director, NASA Research Center
W. Eugene Collins	Associate Director, Research Center

ACADEMIC CALENDAR

2004 Fisk University Fact Book

Table 1.4 Academic Calendar Overview, Fall 2004 – Fall 2005

FALL SEMESTER 2004

Classes Begin	Tuesday	September 2
Thanksgiving Vacation	Thursday - Friday	November 27 - 28
Classes End	Thursday	December 11
Final Exams End	Thursday	December 18

SPRING SEMESTER 2005

Classes Begin	Wednesday	January 7
Spring Vacation	Monday - Friday	March 1 - 5
Classes End	Tuesday	April 20
Final Exams End	Wednesday	April 28
Commencement	Monday	May 3

FALL SEMESTER 2005

Classes Begin	Monday	August 31
Thanksgiving Vacation	Wednesday - Friday	November 24-26
Classes End	Tuesday	December 9
Final Exams End	Wednesday	December 16

STUDENT AND ACADEMIC PROGRAM PROFILE

Students

- Average SAT for Entering Freshmen, Fall Semester 2004:

<u>Verbal</u>	<u>Math</u>	<u>Combined</u>
468	444	923

- Average ACT for Entering Freshmen, Fall Semester 2004:

Composite: **19.0**

- Average High School GPA for Entering Freshmen, Fall Semester 2004

Average: **2.96**

- Admissions, Fall Semester 2004

	Number Applied	Number Accepted	Accepted Yield	Number Enrolled	Enrollment Yield
Freshman	1170	953	66.2%	231	31.0%
Transfer	169	132	78.1%	66	50.0%

- Students at Fisk represent 36 states, The District of Columbia, The U.S. Virgin Islands, and 6 foreign countries.
- Fall Semester 2004 Headcount:

Full-Time	799
Part-Time	43
Total	842

Full-Time Equivalent Students 853

- Credit hours produced by curricular area, Fall Semester 2004:

	Credit Hours Produced
Core Curriculum	3,092
Undergraduate Studies (excluding core)	10,021
Graduate Studies	181.5
Total	13,294.5

- Degrees Conferred by Division, Academic Year 2003-04:

	Bachelors	Masters
Business Administration	24	---
Humanities and Fine Arts	29	---
Natural Science and Math	34	1
Social Science	62	3
Total	149	4

- First-to-Second year retention: 84%
- Graduation Rates:
 - Four-Year Rate 52%
 - Five-Year Rate 58%
 - Six-Year Rate 61%

ADMISSIONS

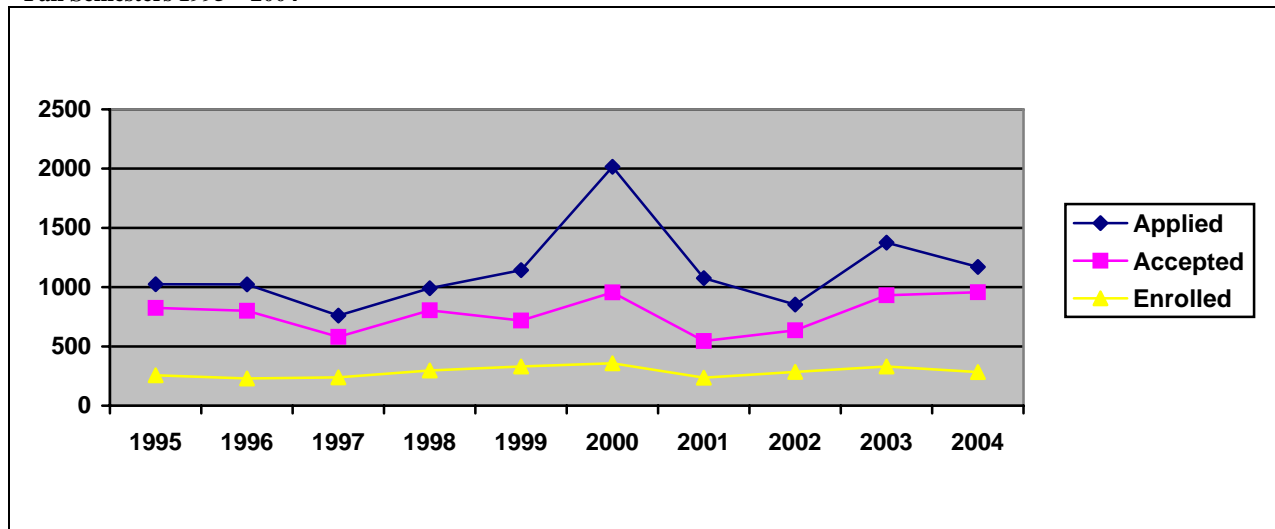
Table 2.1 New Student Admissions (Includes transfer, re-admits and graduate)

Fall Semesters, 1995-2004

	Number Applied	Number Accepted	Acceptance Yield	Number Enrolled	Enrollment Yield
2004	1170	957	81.8%	284	29.7%
2003	1376	932	67.7%	331	35.5%
2002	853	636	74.6%	285	34.6%
2001	1,076	546	50.7%	236	43.2%
2000	2,015	956	47.4%	358	37.4%
1999	1,143	718	62.8%	331	42.4%
1998	991	804	81.8%	297	36.1%
1997	760	581	76.4%	239	41.4%
1996	1,023	800	78.2%	230	28.8%
1995	1,025	825	80.5%	257	31.2%

Figure 2.1 New Student Applicants by Admission Status

Fall Semesters 1995 – 2004

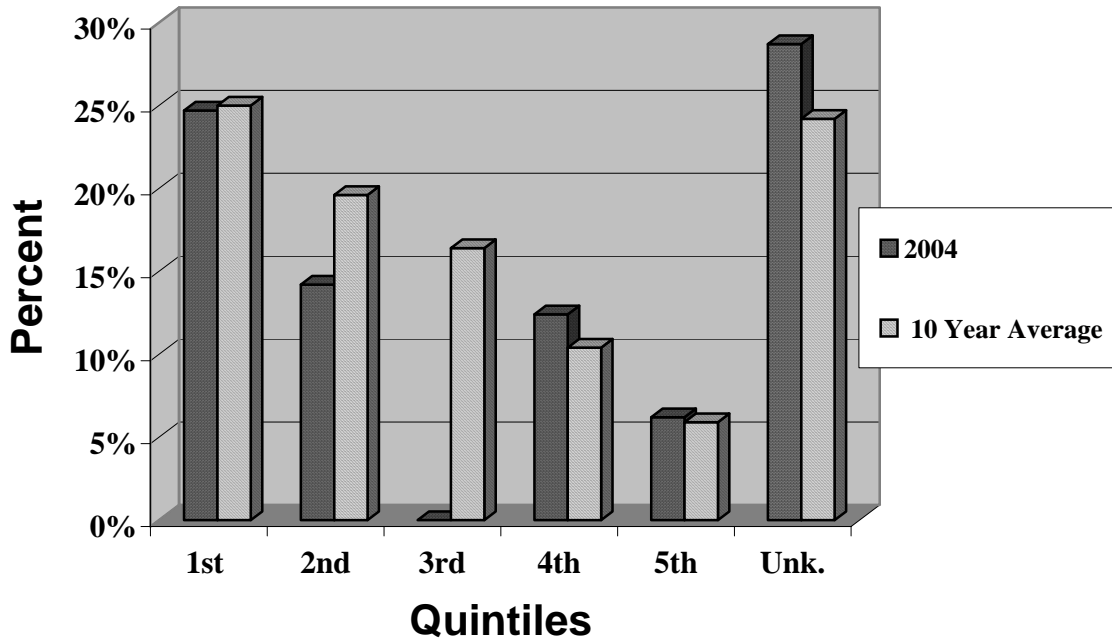


ADMISSIONS

Table 2.2 Percent Distribution of High School Rank
Fall Semesters, 1995-2004

	First Quintile	Second Quintile	Third Quintile	Fourth Quintile	Fifth Quintile	% Unknown Rank
2004	24.7%	14.2%	14.6%	12.4%	6.2%	28.7%
2003	27.3%	14.7%	11.7%	13%	7.8%	25.1%
2002	22.2%	18.6%	15.9%	8.2%	4.5%	30.5%
2001	25.8%	21.9%	18.5%	12.6%	2.6%	17.9%
2000	27.0%	24.6%	13.7%	10.5%	7.7%	18.5%
1999	19.0%	16.1%	9.1%	6.2%	4.1%	54.1%
1998	27.2%	21.0%	12.9%	11.2%	4.0%	23.7%
1997	25.0%	24.4%	18.6%	10.3%	7.7%	14.1%
1996	24.0%	21.1%	25.7%	7.4%	6.9%	14.9%
1995	27.3%	19.5%	22.9%	12.2%	3.9%	14.2%
10 Year Avg	25.0%	19.6%	16.4%	10.4%	5.9%	24.2%

Figure 2.2 Fall 2004 and Ten-Year Average of High School Rank by Quintile



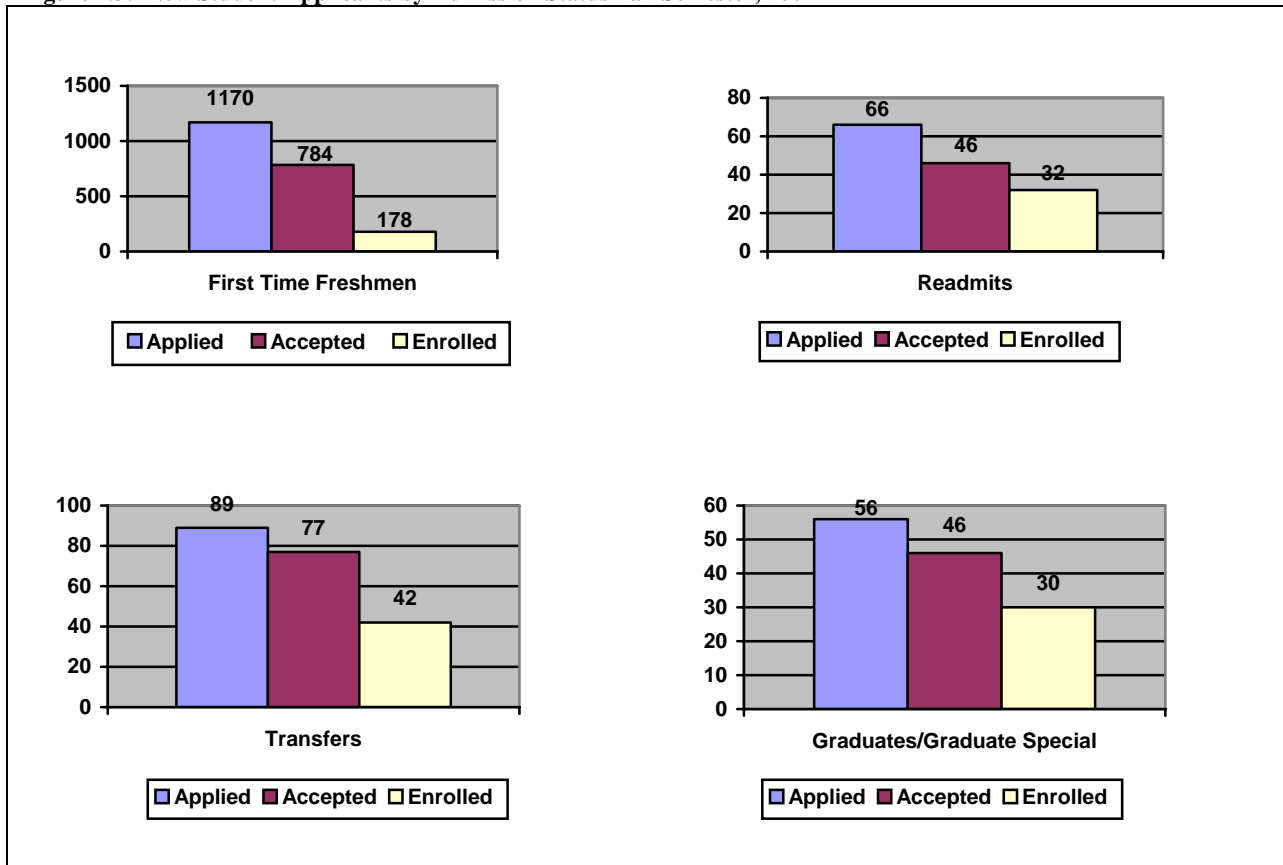
- First quintile is the highest class rank
- Unk. means “unknown”

ADMISSIONS

Table 2.3: Entering Status of New Students, Fall Semester, 2004

	First-Time Freshmen	Transfers	Readmits	Graduates	Graduate Special	Transient and Exchange	Total
Number Applied	955	89	66	36	20	4	1170
Number Accepted	784	77	46	28	18	4	957
Accepted Yield	82.1%	79.8%	69.7%	77.8%	90.0%	100%	81.8%
Number Enrolled	178	42	32	14	16	2	284
Enrollment Yield	22.7%	54.5%	69.6%	50.0%	88.9%	50.0%	29.7%

Figure 2.3: New Student Applicants by Admission Status Fall Semester, 2004



ADMISSIONS

Table 2.4: Admissions of First-Time Freshmen, Fall 2004

	<u>Entering Test Scores</u>	
	SAT	ACT
Range	670 - 1330	12 – 26
75 th Percentile	990	21
Mean	923	19.0
25 th Percentile	800	17
Number students submitting scores	81	121
<hr/>		
	<u>High School GPA</u>	
Range	1.50 – 3.96	
75 th Percentile	3.4	
Mean	2.96	
25 th Percentile	2.5	
Number students submitting scores	174	
<hr/>		
	<u>High School Rank</u>	
Percent in Top 10%	20%	
Percent in Top 50%	61%	
Number students submitting scores	127	

ADMISSIONS

**Table 2.5 Distribution of First Time Freshman Enrollment by Geographic Region and State
Fall Semester, 2004**

<u>EAST</u>			<u>SOUTH</u>		
Connecticut	0		Alabama	2	
District of Columbia	2		Florida	3	
Maryland	8		Georgia	8	
Massachusetts	1		Mississippi	3	
New Hampshire	0		North Carolina	1	
New Jersey	1		South Carolina	1	
New York	5		Tennessee	47	
Pennsylvania	1		Virginia	1	
Total	18 (10.1%)		Total	66 (37.1%)	
 <u>MIDWEST</u>			 <u>SOUTHWEST</u>		
Illinois	24		Arkansas	2	
Indiana	0		Louisiana	0	
Iowa	0		New Mexico	0	
Kansas	0		Oklahoma	0	
Kentucky	5		Texas	7	
Michigan	2		Total	9 (5.1%)	
Minnesota	0				
Missouri	8		 <u>WEST</u>		
Ohio	10		Arizona	0	
Wisconsin	2		California	23	
West Virginia	0		Colorado	0	
Total	51 (28.6%)		Idaho	1	
			Nevada	0	
			Oregon	0	
			Washington	1	
			Total	25 (14.0%)	
			 <u>FOREIGN</u>		
			Total	9 (5.1%)	
			 <u>GRAND TOTAL</u>		
				178	

Table 2.6 Financial Aid Summaries: 1999-2003 to 2003-04

	<u>1999-00</u>	<u>2000-01</u>	<u>2001-02</u>	<u>2002-2003</u>	<u>2003-2004</u>
Grants¹	1,330,425	1,325,104	\$1,809,660	\$1,867,816	\$1,854,449
Loans²	4,840,334	5,222,629	4,931,958	6,107,801	\$5,781,973
Self Help³	221,120	217,392	219,863	220,920	11,952
Scholarships⁴	1,673,629	2,054,649	1,814,322	2,573,203	\$3,418,799
TOTAL AID	\$8,065,508	\$8,819,774	\$8,775,803	\$10,769,740	\$11,067,173
Unduplicated Recipients	780	730	699	733	831
Total Aid Per Student	\$10,340	\$11,967	\$12,555	\$14,693	\$13,318
GRANTS:					
-Average Grant/Student	\$1,706	\$1,798	\$2,589	\$2,548	\$2,232
-Percent of Total Aid	16.5%	15.0%	20.6%	17.3%	16.7%
LOANS:					
-Average Loan/ Student	\$6,205	\$7,086	\$7,056	\$8,333	\$6,957
-Percent of Total Aid	60.0%	59.2%	56.3%	56.7%	52.2%
SELF-HELP:					
-Average Amount Student	\$283	\$295	\$315	\$301	\$14
-Percent of Total Aid	2.7%	2.4%	2.5%	2.1%	0.1%
SCHOLARSHIPS:					
-Average Scholarship/ Student	\$2,146	\$2,788	\$2595	\$3,511	\$4,114
-Percent of Total Aid	20.8%	23.3%	20.7%	23.9%	30.9%

¹ Pell, SEOG, State

²Stafford, Perkins, Plus

³College Work Study, University Work

⁴UNCF, University, Outside Sources

FINANCIAL AID

Table 2.7 Financial Aid Allocations 2002-03 and 2003-04

TYPE OF AID	2002 – 2003		2003-2004	
	Number of Students	Amount Awarded	Number of Students	Amount Awarded
Pell Grants	615	\$1,318,752	472	\$1,432,679
SEOG	223	260,425	224	239,225
College Work Study	167	220,920		11,592
Stafford Loans	718	4,422,107	892	3,333,101
Perkins Loans	45	126,858	164	442,345
Plus Loans	171	1,558,836	156	1,415,003
Academic Scholarship/Grants	199	2,219,644		2,556,702
State Scholarship/Grants	98	288,639	63	154,965
Other Scholarship/Grants	68	353,559	312	862,097
	\$10,769,740		\$11,067,173	

Source: Financial Aid Office

Figure 2.4 Percent Distribution of Financial Aid by Category: 1999-00 through 2003-04

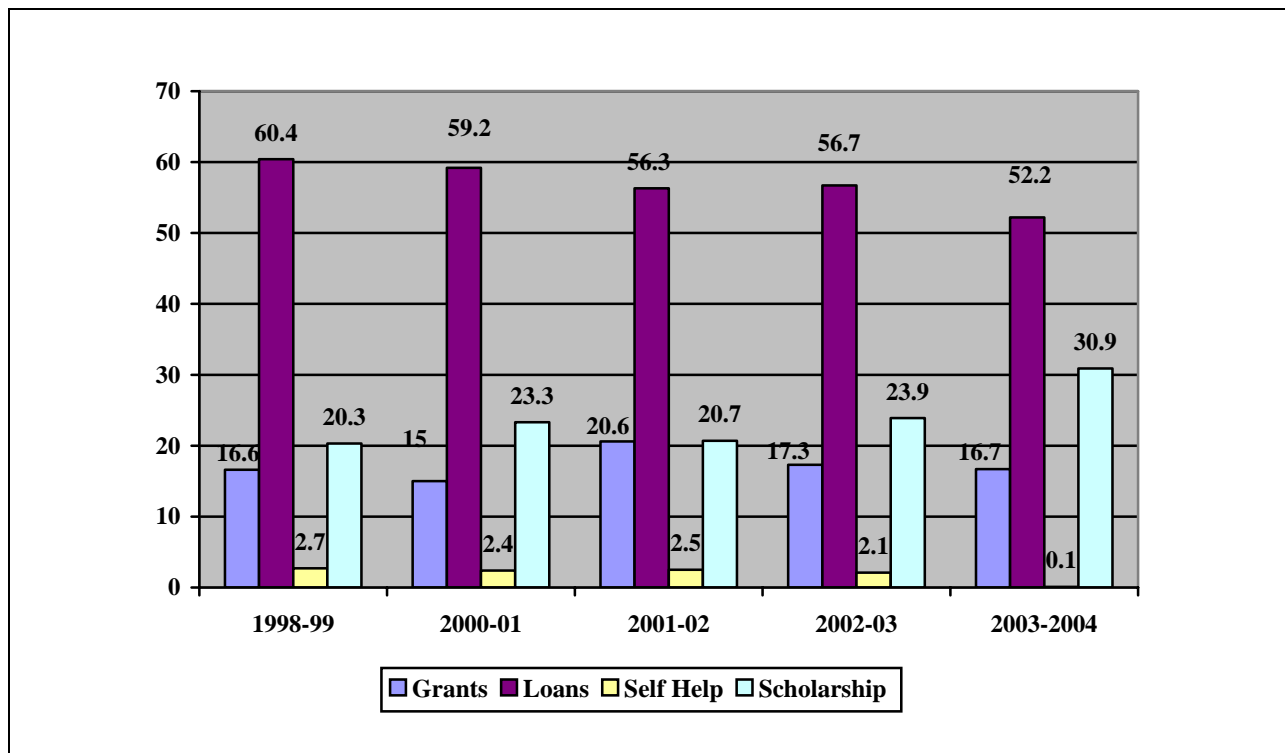


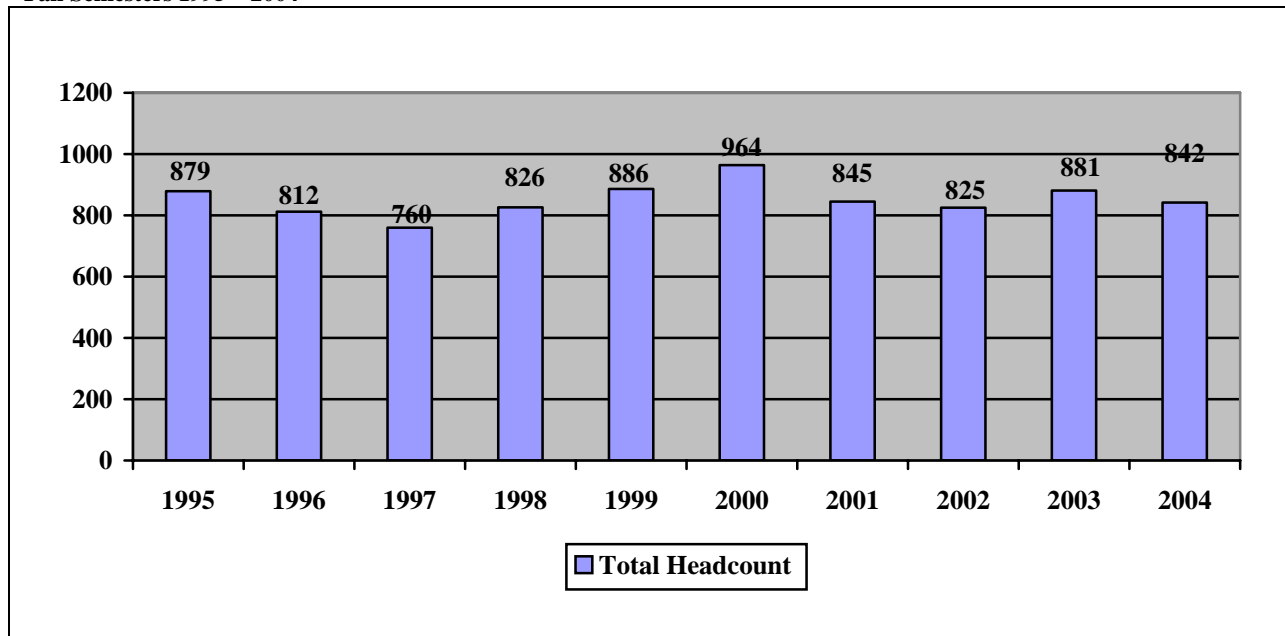
Table 2.8: Total Headcount by Gender

Fall Semesters 1995 – 2004

YEAR	MALE	FEMALE	TOTAL
2004	293	549	842
2003	278	603	881
2002	254	571	825
2001	260	625	845
2000	311	653	964
1999	268	618	886
1998	248	578	862
1997	226	534	760
1996	246	566	812
1995	265	614	879
Period Average	265	591	856
Average %	31%	69.0%	100%

Figure 2.5: Total Headcount

Fall Semesters 1995 – 2004



ENROLLMENT

Table 2.9: Total Headcount by Academic Classification*

Fall Semesters 1995 – 2004

YEAR	FRESHMEN	SOPHOMORES	JUNIORS	SENIORS	GRADUATE*	POST BAC	TOTALS
2004	342	191	142	119	29	19	842
2003	285	200	143	222	31		881
2002	339	170	175	108	33		825
2001	327	138	155	163	62		845
2000	375	172	149	148	120		964
1999	378	147	139	153	69		886
1998	322	120	128	189	67		826
1997	246	135	142	174	63		760
1996	292	144	147	185	44		812
1995	331	164	155	190	39		879
10 Year Average	326	154	149	167	56		855

*For historical reasons, the Graduate column before 2004 also includes Post-Baccalaureate students who are not in the graduate degree program, but are taking courses for such programs as teacher certification, after receiving a Bachelor's degree at Fisk or elsewhere. As of fall 2004, we are reporting these separately.

* Academic classifications are by earned credit hours (Freshman = 0-30; sophomore = 31-60; junior = 61-90; senior = 91-120). The large freshman count is to a certain extent due to the fact that many third semester students are still one or two credits shy of the 31 hours they need for sophomore status.

Table 2.10: Headcount by Class and Gender: Fall Semester, 2003

	Male	Female	Total
Freshmen	91	194	285
Sophomore	57	143	200
Junior	57	86	143
Senior	60	162	222
Graduate	11	12	23
Graduate, Special	2	6	8
-----	-----	-----	-----
Totals	278	603	881
(% Total)	31.6%	68.4%	100%

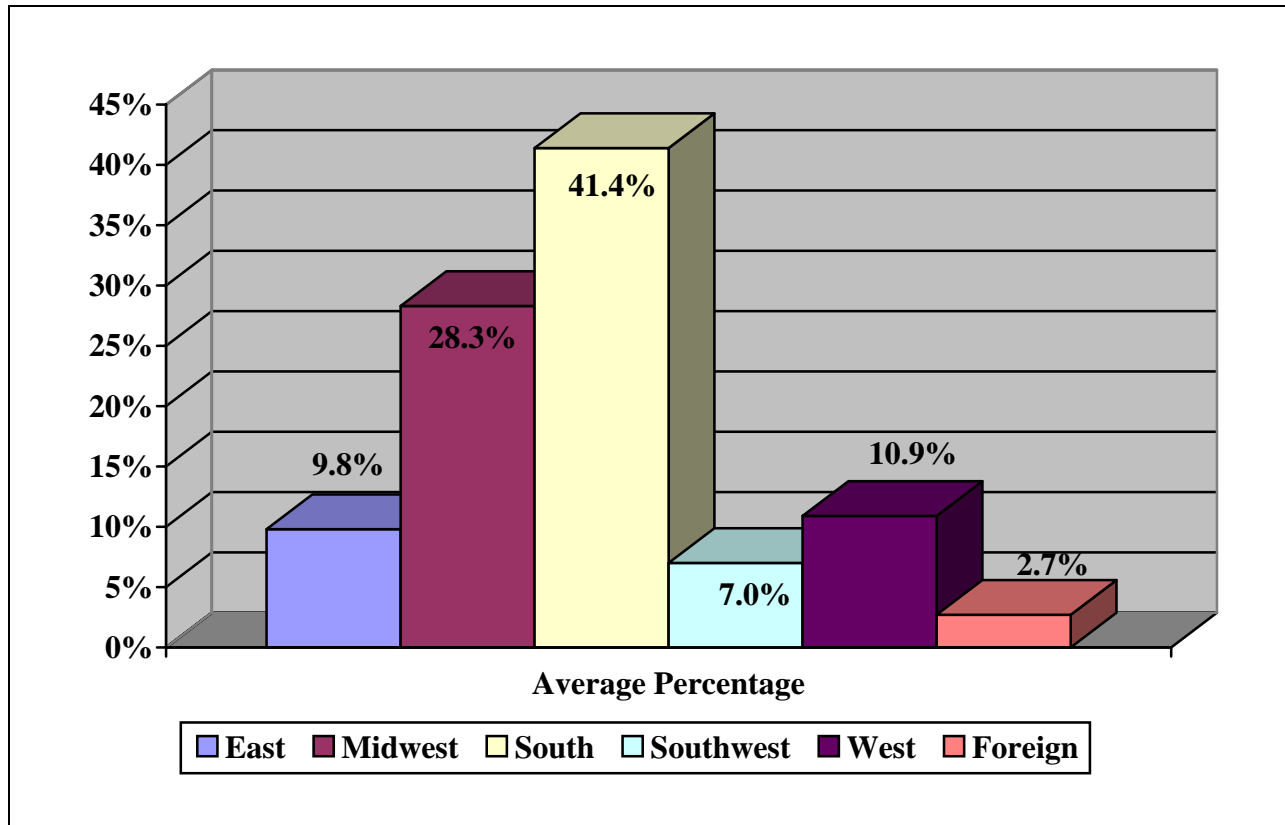
ENROLLMENT

Table 2.11 Percent Distribution of Headcount by Geographical Region

Fall Semesters 1994 – 2003

	EAST	MIDWEST	SOUTH	SOUTHWEST	WEST	FOREIGN	TOTAL COUNT
2004	8.92%	29.0%	40.4%	5.1%	12.4%	4.2%	842
2003	8.6%	30.3%	40.4%	5.8%	11.4%	3.6%	881
2002	8.3%	29.3%	40.7%	6.0%	11.6%	5.0%	825
2001	8.2%	28.9%	41.2%	6.9%	10.0%	5.0%	845
2000	8.0%	27.5%	44.8%	6.8%	9.9%	3.0%	964
1999	9.5%	28.4%	40.9%	7.2%	10.2%	3.8%	886
1998	10.0%	28.5%	41.8%	8.0%	10.0%	1.5%	826
1997	11.2%	27.4%	42.6%	7.6%	10.8%	0.4%	760
1996	11.2%	26.4%	41.3%	8.5%	12.6%	0.2%	812
1995	13.7%	27.1%	40.0%	8.4%	10.2%	0.6%	879
10 Year Average	9.8%	28.3%	41.4%	7.0%	10.9%	2.7%	852

Figure 2.6: Ten-Year Average of Percent Distribution of Headcount by Region: 1994-2004



ENROLLMENT

Table 2.12 Total Headcount Enrollment Distribution by Region and State

Fall Semesters 2003 and 2004

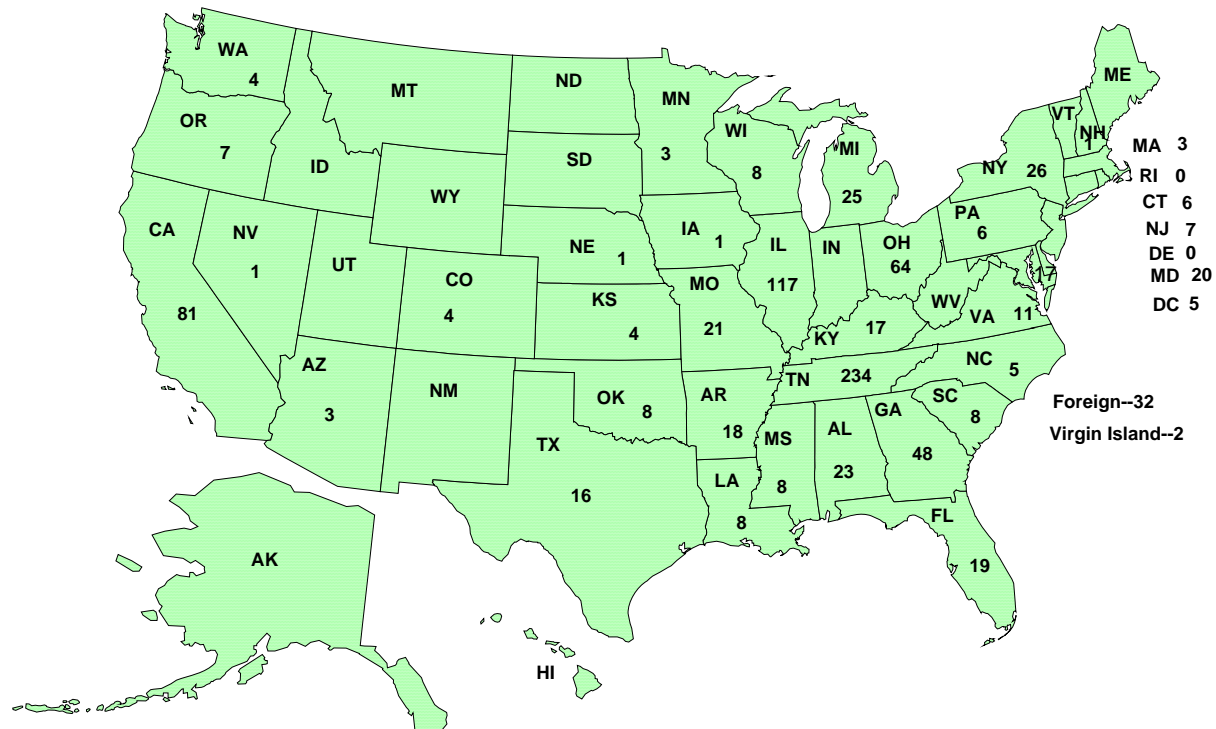
	2003	2004		2003	2004
<u>EAST</u>			<u>SOUTH</u>		
Connecticut	6	4	Alabama	23	18
Delaware	0	0	Florida	19	17
District of Columbia	5	7	Georgia	48	34
Maryland	20	21	Mississippi	8	12
Massachusetts	3	1	North Carolina	5	3
New Jersey	7	6	South Carolina	8	10
New York	26	26	Tennessee	234	233
New Hampshire	1	1	Virginia	11	13
Pennsylvania	6	7			
Rhode Island	0	0	TOTAL	356	340
Virgin Island	2	2			
TOTAL	76	75			
			<u>SOUTHWEST</u>		
			Arkansas	18	18
<u>MIDWEST</u>			Louisiana	8	6
Illinois	117	121	Oklahoma	8	4
Indiana	6	5	Texas	16	15
Iowa	1	1	TOTAL	50	43
Kansas	4	1			
Kentucky	17	14	<u>WEST</u>		
Michigan	25	20	Alaska	0	0
Minnesota	3	3	Arizona	3	1
Missouri	21	19	California	81	92
Nebraska	1	0	Colorado	4	3
Ohio	64	52	Nevada	1	0
Wisconsin	8	8	New Mexico	0	0
West Virginia	0	0	Oregon	7	3
TOTAL	267	244	Idaho	0	1
			Washington	4	4
			Hawaii	0	1
			TOTAL	100	105
			Virgin Islands	5	2
			Puerto Rico	0	2
			<u>INTERNATIONAL</u>	26	34
			<u>GRAND TOTAL</u>	825	842

ENROLLMENT

Table 2.13: Geographic Distribution of Headcount by State

Fall Semester 2003

Geographical Distribution of Fisk's Students - 2003



MAJOR PROGRAMS

2004 Fisk University Fact Book

Table 2.14: Distribution of Undergraduate Majors by Division and Discipline

Fall Semesters, 2000 through 2004

*Joint majors are weighted ½, once in each major field.

	2000	2001	2002	2003	2004
BUSINESS ADMINISTRATION					
Business Administration	104	100	132	108.5	116.5
DIVISION TOTAL	104	100	132	108.5	116.5
% DECLARED MAJORS	15.2%	17.6%	20.6%	17.2%	14.6%
% HEADCOUNT	11.5%	13.0%	16.7%	12.8%	13.8%
Humanities & Fine Arts					
Art	8	6	18.5	12.5	14.5
Dramatics & Speech	17	12	27	31	22
English	33	26	31	31.5	36.5
Modern Foreign Lang.	7	3	10	7	5
Music	14	17	13	23	25
Religion and Philosophy	4	1	9	5.5	8.5
DIVISION TOTAL	83	65	99.5	110.5	111.5
% DECLARED MAJORS	12.1%	11.5%	15.5%	17.5%	18.1%
% HEADCOUNT	9.2%	8.5%	12.6%	13%	14.0%
NSM					
Biology	164	117	94.5	122.5	116.5
Chemistry	25	20	26.5	28.5	28
Computer Science	45	44	19	26.5	22
Mathematics	13	12	9.5	9.5	4.5
Nursing (new in 2004)					26
Physics	17	11	9.5	3	6.5
DIVISION TOTAL	264	204	159	190	203.5
% DECLARED MAJORS	38.5%	36.0%	36.0%	30%	33.0%
% HEADCOUNT	29.3%	26.6%	26.6%	22.4%	25.6%
Social Science					
History	16	16	13	19.5	19
Pol Science	44	44	60.5	51.5	45
Psychology	121	121	157	127	88.5
Sociology	17	17	20	25	2
Special Education (new in 2003)					12
DIVISION TOTAL	198	198	250.5	223	185.5
% DECLARED MAJORS	34.9%	34.9%	39.0%	35.3%	30.1%
% HEADCOUNT	25.8%	25.8%	31.6%	26.2%	23.4%
TOTAL DECLARED MAJORS	567	567	641	632	617
% HEADCOUNT	73.8%	73.8%	80.9%	74.4%	77.8%
TOTAL UNDECLARED MAJORS	201	201	151	218	177
% HEADCOUNT	26.2%	26.2%	19.1%	25.6%	22.3%
TOTAL HEADCOUNT	768	768	792	850	794

CREDIT HOURS

Table 2.15: Distribution of Credit Hours Offered, Produced, and Produced Per FTE Plus Faculty and Average Class Size - Fall Semesters, 2000 through 2004

	2000	2001	2002	2003	2004
CORE CURRICULUM					
No of Sections	28	29	29	28	33
Credit Hours Offered	112	116	112	108	108
Headcount	802	761	759	1,014	940
Credit Hours Produced ¹	3,208	3,044	3,036	3,092	2992
Credit Hours Produced /FTE/Faculty ²	344	315	314	343.6	332.4
Average Class Size ³	28.64	26.2	26.2	36.2	28.5
UNDERGRADUATE STUDIES					
No of Sections	224	232	220	215	225
Credit Hours Offered	667.5	675.5	654	630	660
Headcount	3,598	3,046	3,028	3,210	2913
Credit Hours Produced	14,128	9,713	9,494	10,021	9042
Credit Hours Produced /FTE/Faculty	200	173	174	190.9	164.4
Average Class Size	16.06	13.1	13.8	14.9	12.9
GRADUATE STUDIES					
No of Sections	32	28	19	16	18
Credit Hours Offered	81.5	55.5	34.5	40.5	42.5
Headcount	136	83	58	66	83
Credit Hours Produced	313	171	115	181.5	210
Credit Hours Produced /FTE Faculty	46	37	40	53	59
Average Class Size	3.67	3.8	3.1	4.1	4.6
TOTALS					
No of Sections	278	289	268	259	276
Credit Hours Offered	864	847	801	778.5	810.5
Headcount	4,538	3,245	3,845	4,290	3936
Credit Hours Produced	14,649	12,928	12,635	13,294.5	1224.4
Credit Hours Produced /FTE/Faculty	203	183	189	205	181.3
Average Class Size	16.32	11.3	14.3	16.6	13.2

SOURCE: Institutional Research, Banner Database

1 Credit Hours Produced is derived by multiplying credit hours for each course by number of students enrolled in a course

2 FTE is "Credit hrs offered divided by 12 credits, where 12 credits is faculty load"

3 Average Class Size is "Headcount divided by number of sections"

CREDIT HOURS

Figure 2.7: Profile of Total Credit Hours Offered

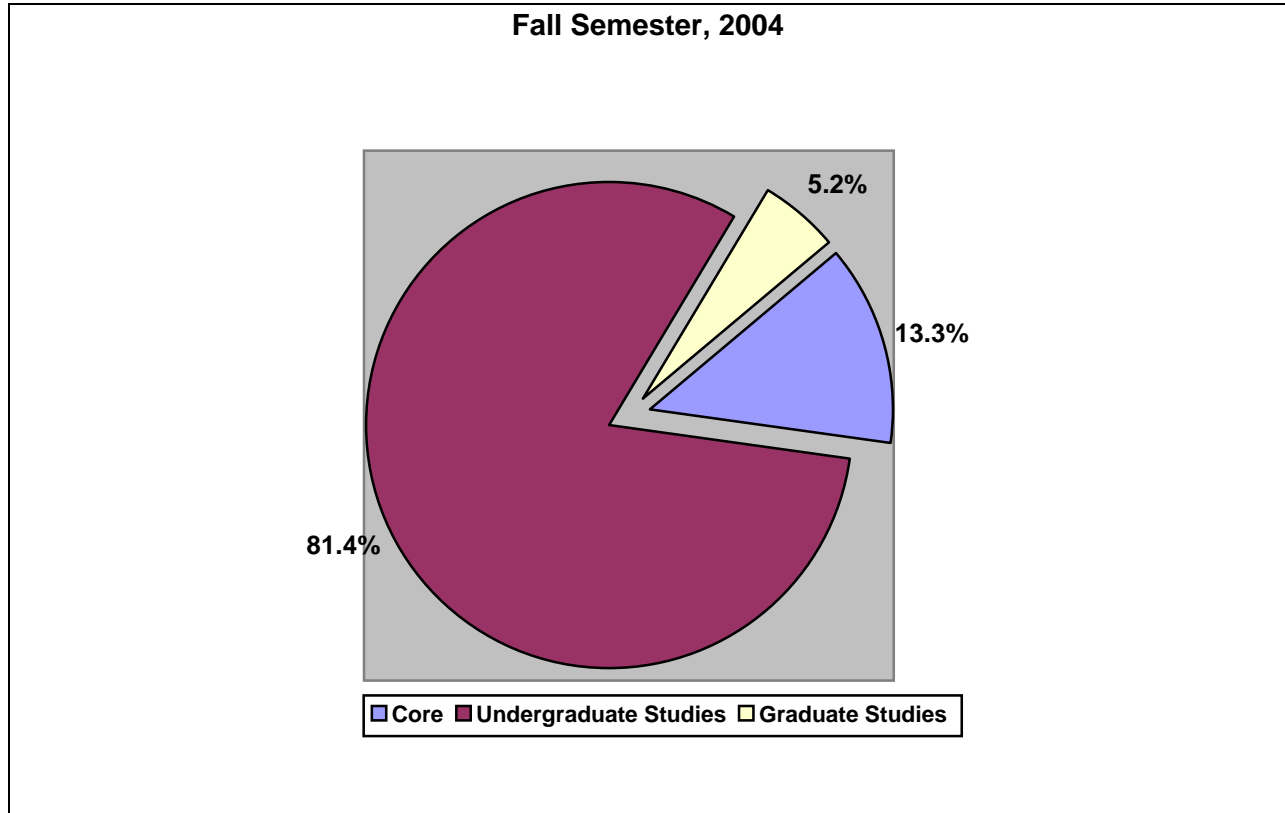


Table 2.16 Undergraduate Disciplines with Highest Credit Hours Produced

Fall Semester, 2004

Discipline	Number Sections	Credit Hours Produced	Fall 2003 Rank
SPANISH	14	1124	2
MATH	12	984	4
PSYCHOLOGY	9	952	1
BUSINESS ADMIN	15	883	3
BIOLOGY	14	537	5

Table 2.17: Distribution of Credit Hours Offered, Credit Hours Produced, Credit Hours Produced per FTE Faculty and Average Class Size**Fall Semester, 2004**

	Number of Sections	Credit Hours Offered	Enrollment	Student Credit Hour Production	SCHP/FTE Faculty	Average Class Size
By Curricular Level:						
Core	28	108	1,014	3,333	343.6	36.2
Undergraduate Studies	215	630	3,210	10,021	190.9	14.9
Graduate Studies	16	40.5	66	181.5	53	4.1
Total	259	778.5	4,290	13,294.5	205	16.6

Core Curriculum by Course:

100	3	0	192	0	0	64
110	7	28	192	768	329	27.4
130	2	8	51	204	306	25.5
140	2	8	24	96	144	12
210	4	16	110	440	330	27.5
220	4	16	135	540	405	33.8
230	3	12	78	312	312	6.5
250	3	12	79	316	316	26.3
360	2	8	90	360	512	45
Total	30	108	940	2,992	332	31.3

Undergraduate Studies by Division/Program:

BUA	15	51	277	960	207	18.4
HFA	95	278	960	3093	133.5	10.1
NSM	64	154	985	2522	196.5	15.3
SSC	50	176	690	2543	173.4	13.8
Total	224	659	2,912	9116	166.0	13.0

Graduate Studies by Discipline:

BIO	0	0	0	0	0	0
CHE	3	6.5	14	22	40.6	4.7
PHY	6	14	32	86	73.7	5.3
PSY	9	22	37	102	55.6	4.1
Total	18	38.5	83	210	65.5	4.6

CREDIT HOURS

Table 2.18: Credit Hours Offered, Credit Hours Produced, Credit Hours Produced per FTE Faculty and Average Class Size

Fall Semester, 2004

	NO. SECTIONS	CREDIT HOURS OFFERED	FTE FACULTY	ENROLLED	STUDENT CREDIT HOUR PRODUCED	STUDENT CREDIT HOURS PRODUCED/ FTE-FAC	AVG CLASS SIZE
<u>BUA</u>							
ACC	3	11	0.9	39	128	134	13.0
BUA	6	18	1.5	148	128	140	24.7
ECO	4	7	0.6	53	167	286	13.3
FIN	2	7	0.6	21	72	123	10.5
MGT	3	8	0.7	16	64	96	5.3
TOTAL	18	51	4.3	277	883	208	15.4
<u>HFA</u>							
ART	10	40	3.3	91	364	109	9.1
DSP	9	32	2.6	59	192	144	6.6
ENG	6	24	2.0	113	452	226	18.8
HFA	6	18	1.5	47	136	91	7.8
<u>MFL</u>							
FRE	5	20	1.7	55	220	132	16.5
SPA	14	56	4.7	281	1124	241	20.6
MUS	38	64	5.3	249	345	65	7.8
RPH	6	24	2.0	65	260	130	12.0
TOTAL	87	278	23.2	960	3093	134	12.0
<u>HON</u>							
	4	10	0.8	8	23	28	2.0
<u>NSM</u>							
BIO	14	27	2.3	280	537	239	20.0
CHE	14	30	2.5	251	512	205	17.9
CSC	12	27	2.3	79	209	93	6.6
MTH	12	48	4	246	984	246	20.5
NSCI	3	6	0.5	31	60	120	10.3
PHY	8	16	1.3	98	220	165	12.3
TOTAL	65	154	12.8	985	2522	197	15.2
<u>SSC</u>							
EDU	12	34	2.9	73	199	68	6.1
HIS	5	17	1.4	64	247	174	12.8
PSC	7	28	2.3	83	332	142	11.9
PSY	9	33	2.8	253	952	346	28.1
SOC	5	19	1.6	78	311	196	15.6
SPED	6	18	1.5	45	135	90	7.5
SSC	4	8	0.7	26	104	156	26
TOTAL	48	176	14.7	690	2543	173	14.4
UNDERGRAD							
TOTALS	222	660	55.0	2913	9042	164	13.1

SOURCE: Institutional Research, Banner Data

Table 2.21 Distribution of Class Size For Undergraduate Studies: Fall Semester 2004

Size Range	BU	CORE	HFA	HON	NSM	SSC	Total
1 - 5	2	1	34	4	17	11	69
6 - 10	3	0	22	0	14	9	48
11-15	2	0	21	0	5	8	36
16-20	2	3	8	0	8	3	24
21-25	1	5	5	0	6	4	21
26-30	3	13	3	0	4	5	30
31-35	1	5	1	0	5	3	15
36-40	0	4	0	0	3	1	8
41-50	1	2	0	0	1	1	5
50 and Above	0	0	1	0	1	0	3
TOTAL	15	33	95	4	64	45	256

Table 2.22: Distribution of Class Size For Graduate Studies: Fall Semester 2004

Size Range	NSM	SSC	Total
1 - 5	6	6	12
6-10	4	2	6
Total	10	8	18

ACADEMIC ACHIEVEMENT

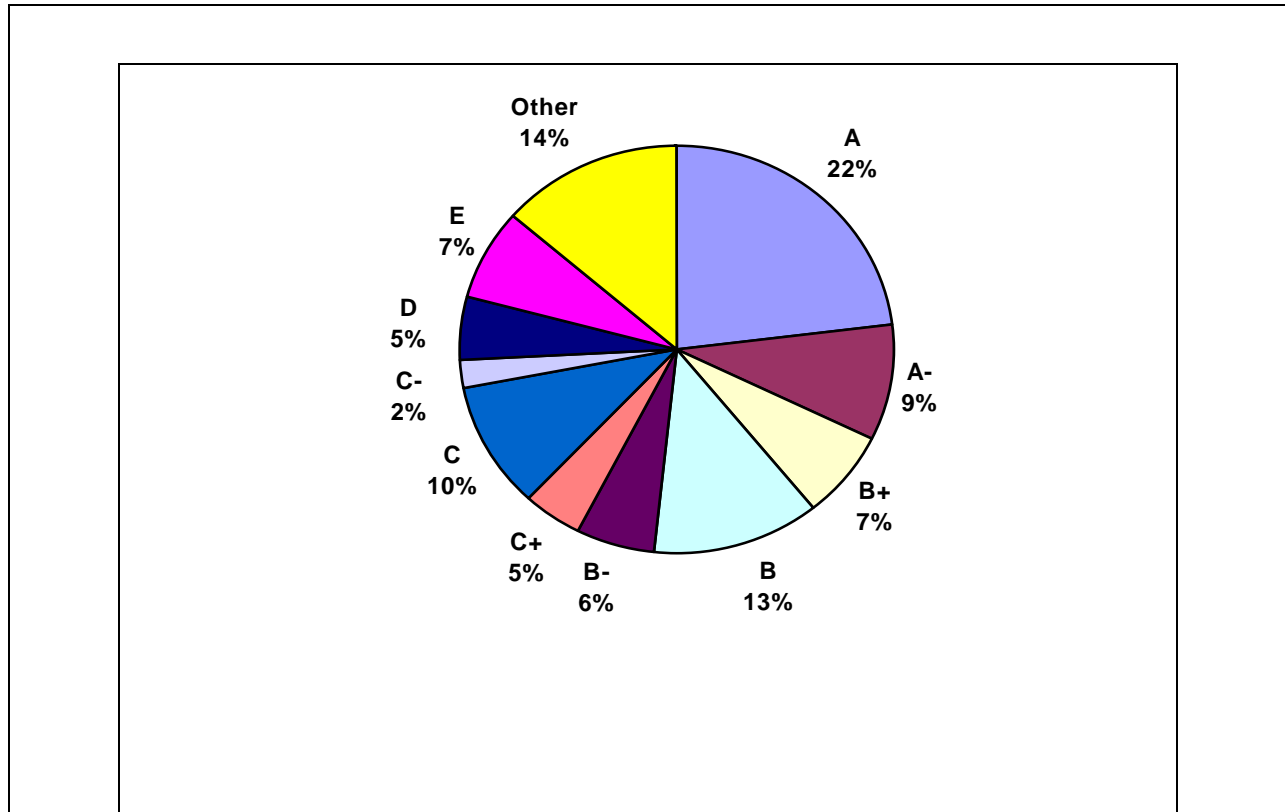
Table 2.23: Academic Performance of Students

Fall Semester 2004

CLASS	4.00 GPA Fall Semester	DEAN'S LIST (3.30 GPA and Above) Fall Semester
Freshmen	5	57
Sophomores	5	54
Juniors	5	52
Seniors	3	30
Totals		
	18	193
% Undergraduate Enrollment	2.2%	24.3%

SOURCE: Banner Academic History

Figure 2.8: Profile of All Earned Grades: Fall 2004



Other = Incompletes, Withdrawn, Pass/Fail

DISTRIBUTION OF GRADES

PERCENT GRADE DISTRIBUTIONS BY PROGRAM - FALL 2003 (+/- Grades Combined)

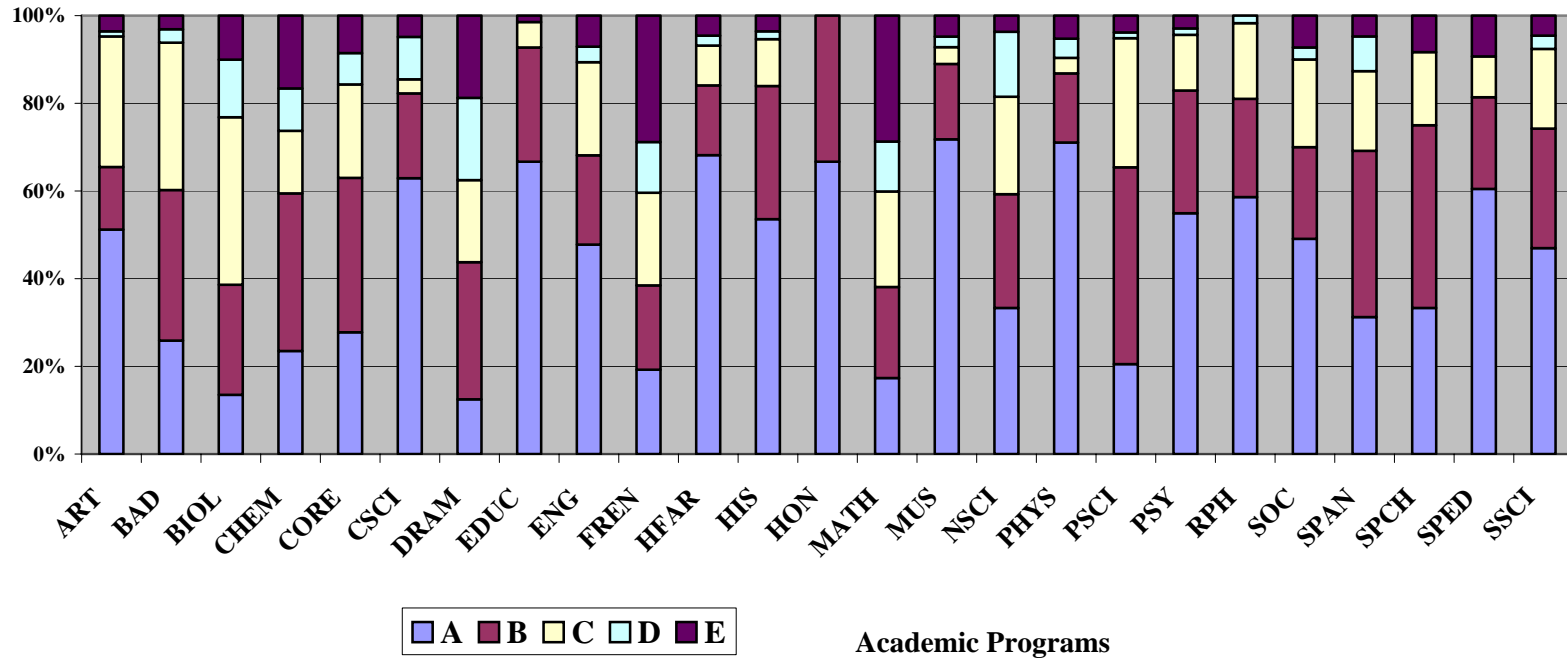


Table 2.26: Degrees Awarded by Major

Commencements May 2000 through May 2004 (Including degrees completed in previous December)

	2000	2001	2002	2003	2004
BACHELOR DEGREES					
<u>Business Administration</u>	26	22	47	24	25.5
<u>HFA Division</u>					
ART	1	4	9	4.5	4
DRAMA & SPEECH	4	1	4	4	12.5
ENGLISH	8	17	10.5	8.5	10
MODERN FOR LANG	2	6	2.5	2	4
MUSIC	6	1	0	5	6.5
RELIGION & PHIL	-	2.5	1	5	1
HFA TOTAL	21	30.5	27	29	39
<u>NSM</u>					
BIOLOGY	21	13	10	17	17
CHEMISTRY	3	4	8	9	4
COMP SCI	4	2	11	3.5	6
MATH	3	0	0	1.5	1
PHYSICS	3	.5	7	3	1
Natural Science Total	34	19.5	36	34	29
<u>SOCIAL SCIENCES DIV</u>					
HISTORY	3	6	6.5	3.5	3.5
POLITICAL SCI	15	5	13	12.5	16.5
PSYCHOLOGY	38	38	35	38.5	49.5
SOCIOLOGY	2	4	9.5	7.5	6
SPECIAL ED	-	-	-	-	2
SSC TOTAL	58	53	64	62	77.5
GENERAL STUDIES	-	-	-	-	2
TOTAL BACHELOR DEGREES	139	124	174	149	171
MASTERS DEGREES					
BIOLOGY	-	2	1	-	0
CHEMISTRY	1	2	1	1	0
PHYSICS	3	4	6	-	3
PSYCHOLOGY	1	6	5	2	3
SOCIOLOGY	2	3	5	1	0
TOTAL MASTERS DEGREES	7	17	18	4	6
TOTAL DEGREES	146	142	192	153	177

Source: Banner

DEGREES CONFERRED

Figure 2.9: Undergraduate Degrees Conferred by Division
Commencements 2003 and 2004

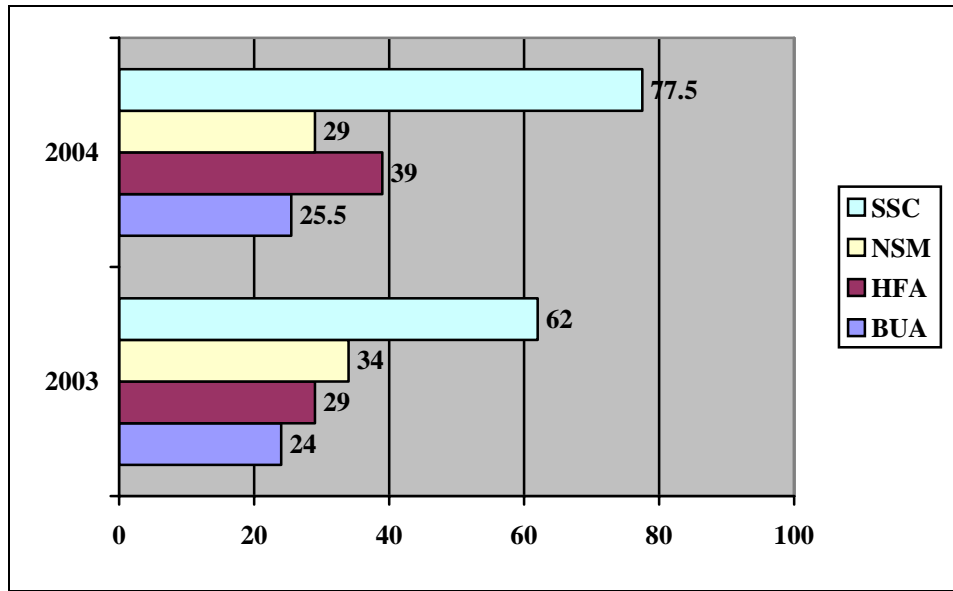


Table 2.27 Percent Distribution of Bachelor's Degrees Conferred by Major
Commencements 2003 and 2004

	2003		2004
Business Admin	25.8%	Psychology	28.9%
Psychology	16.1%	Business Admin	14.9%
Political Science	11.4%	Biology	9.9%
Computer Science	8.4%	Political Science	9.6%
All Other Departments	38.3%	All Other Departments	36.7%

SOURCE: Banner

DEGREES CONFERRED

Figure 2.10: Degrees Conferred by Type

Commencement 2004

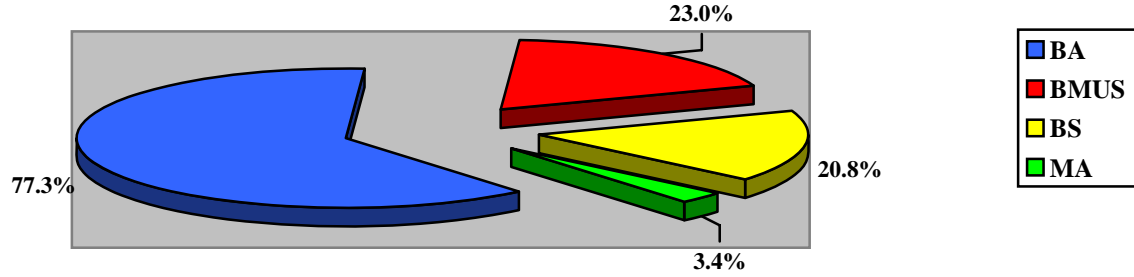


Table 2.28: Characteristics of Undergraduate Degree Recipients

Commencement, 2004

Percent Graduating in Four Years	61.6%
Percent Graduating in Five Years	15.1%
Percent Graduating in More than Five Years	5.8%
Percent Transferred to Fisk	15.7%
Other	1.7%
Percent Graduating with Honors:	
Phi Beta Kappa	7.4%
Summa Cum Laude	8.7%
Magna Cum Laude	13.4%
Cum Laude	12.8%
General University Honors	5.5%
Departmental Honors	36.2%

DEGREES CONFERRED

Table 2.29 Degrees Conferred by Gender and Discipline - Commencements 2003 and 2004

	2003			2004		
	M	F	TOTAL	M	F	TOTAL
BACHELORS OF ARTS						
<u>BUA</u>	-	1.5	1.5			
BUA		1.5	1.5			
<u>HFA</u>						
ART	-	1.5	1.5			
DSP	-	4	4			
ENG	1	7.5	8.5			
FRE	-	-	-			
MUS	1	-	1			
RPS	3	2	5			
SPA	-	2	2			
SUBTOTAL	5	17	22			
<u>NSM</u>						
BIO	4	13	17			
CHE	1	2	3			
CSC	-	1	1			
MTH	-	1.5	1.5			
PHY	-	-	-			
SUBTOTAL	5	17.5	22.5			
<u>SSC</u>						
HIS	-	3.5	3.5			
PSC	1	11.5	12.5			
PSY	9	29.5	38.5			
SOC	1	6.5	7.5			
SUBTOTAL	11	51	62			
TOTAL B.A.	21	87	108			
BACHELOR OF MUSIC						
MUS	1	-	1			
SUBTOTAL	1	-	1			
BACHELOR OF SCIENCE						
<u>BUA</u>						
BUA	9.5	13	22.5			
SUBTOTAL	9.5	13	22.5			
<u>HFA</u>						
ART	-	3	3			
MUS	-	3	3			
SUBTOTAL	-	6	6			
<u>NSM</u>						
CHE	3	3	6			
CSC	.5	2	2.5			
PHY	2	1	3			
SUBTOTAL	5.5	6	11.5			
TOTAL B.S.	15	25	40			
TOTAL BACHELOR						

DEGREES	37	112	149				
	M	F	T		M	F	TOTAL
MASTERS OF ARTS							
<u>NSM</u>							
BIO	1	-	1		-	-	-
CHE	1	-	1		-	1	1
PHY	5	1	6		-	-	-
SUBTOTAL	7	1	8		-	1	1
<u>SSC</u>							
PSY	-	5	5		-	2	2
SOC	1	4	5		1	-	1
SUBTOTAL	1	9	10		1	2	3
TOTAL MASTERS DEGREES	8	10	18		1	3	4
TOTAL DEGREES	61	131	192		38	115	153

RETENTION AND GRADUATION RATES

2004 Fisk University Fact Book

Table 2.30: Retention and Graduation Rates: Fall Semesters, 1995 through 2004

<u>RETENTION</u>	<u>1995</u>	<u>1996</u>	<u>1997</u>	<u>1998</u>	<u>1999</u>	<u>2000</u>	<u>2001</u>	<u>2002</u>	<u>2003</u>	<u>2004</u>
A. No of new (First-Time) Freshmen.		175	159	224	242	248	151	220	231	178
B. No. of students from line A who returned for a second year.		149 (85.1%)	150 (94.3%)	196 (87.5%)	232 (95.9%)	186 (75.0%)	125 (83%)	185 (84.1%)	192 (83.1%)	
C. No. of students from line A who returned for a third year.		133 (76.0%)	149 (93.7%)	175 (78.1%)	159 (65.7%)	166 (67%)	109 (72.2)	148 (67.3%)		
D. No. of students from line A who returned for a fourth year.		114 (65.1%)	127 (79.9%)	149 (66.5%)	153 (63.2%)	132 (53.2%)	97 (64.2%)			
E. No. of students from line A who returned for a fifth year.		30 (17.1%)	26 (16.3%)	22 (9.8%)	29 (12.0%)					
F. No. of students from line A who returned for a sixth year.		4 (2.2%)	3 (1.9%)	2 (0.9%)						
<u>GRADUATION</u>										
G. No of students from line A who graduated in four years.		91 (52.0%)	86 (54.1%)	120 (53.4%)	107 (44.2%)	102 (41.1%)				
H. No. of students from line A who graduated in five years.		102 (58.2%)	113 (71.1%)	147 (65.6%)	134 (55.4%)					
I. No. of students from line A who graduated in six years.		110 (62.9%)	114 (71.6%)	152 (67.9%)						

SOURCE: Institutional Research, Banner Database

FACULTY/STAFF PROFILES

Faculty – Fall 2003

- Faculty Profile:

Full-Time Instructional Faculty	51
Division Directors	4
Department Chairs	14
On-Leave	3
Part-Time Instructional Faculty	36
Research Faculty	12
Total	99

- Faculty Profile by Gender:

Male	66
Female	33
Total	99

- Faculty by Highest Degree:

Doctoral	69
Master's	30
Total	99

- Percent Tenured:

Full-Time Instructional Faculty	61%
Part-Time Instructional Faculty	0%

- Faculty Profile by Race:

Black	55
White	28
Asian	13
Hispanic	3
Total	99

FALL 2004: Table 3.1 Full-Time Instructional Faculty

Division of Business Administration			
	RANK	HIGHEST DEGREE	DEGREE FIELD
Cambronero, Alfredo (Director)	Associate Professor	PhD	Economics
Cargill, Stafford	Assistant Professor	PhD	Economics
Holman, Vinita	Assistant Professor	MBA	Accounting
Division of Humanities and Fine Arts			
Art			
Fort, L. Fran	Lecturer	MAT	Art
Henry, Alicia, Chair	Assistant Professor	MFA	Art
Dramatics and Speech			
Fields, Peter (Chair)	Assistant Professor	PhD	Dance
Felder-Fentress, Persephone	Associate Professor	MFA	Theater
Lambert, E. Jean	Associate Professor	PhD	Communications
English			
Bracks, Lean'tin	Associate Professor (Provost)	PhD	English Literature
Clark, Jill	Assistant Professor	PhD	English
Meyer, Adam (Chair)	Associate Professor	PhD	English
Popkin, David	Associate Professor	PhD	English
Modern Foreign Languages			
Brooks, Marcellus	Assistant Professor	MA	Spanish
Goavec, Della (Chair)	Assistant Professor	PhD	French
Meriwether, Curline	Lecturer	MA	Spanish
Nasitir, Robert	Assistant Professor	PhD	Spanish
Rasico, Nancy	Lecturer	MAT	Spanish
Music			
Autry, Philip, Chair	Associate Professor	DMA	Music
Bumbulis, Valija	Assistant Professor	M. Music	Music (Voice)
Kwami, Paul	Curb-Beaman Professor of Music	M. Music	Music
Nash, Gary	Associate Professor	PhD	Music
Stafko, Diane	Assistant Professor	PhD	Music
Religious and Philosophical Studies			
Collier, Karen, Chair	Associate Professor	PhD	Religion

Table 3.1: Full-Time Instructional Faculty – *Continued*

Division of Natural Science and Mathematics			
Dr. W. Eugene Collins, Director			
Biology	RANK	HIGHEST DEGREE	DEGREE FIELD
Gunasekaran, M.	Professor	PhD	Biology
Freeman-Junior, Phyllis	Associate Professor	PhD	Biomedical Science
Ike, Justus (Chair)	Associate Professor	PhD	Biology
McCarroll, Patricia	Lecturer, Core Coordinator	MS	Biology
Welch, Mary McKelvey (Sabbatical Leave)	Werthan Professor of Biology	PhD	Zoology
Chemistry			
Evans, Princilla (Chair)	Associate Professor	PhD	Chemistry
Lu, Weijie	Associate Professor	PhD	Chemistry
Pratt, Lawrence	Assistant Professor	PhD	Chemistry
Wingfield Robert	Associate Professor	PhD	Chemistry
Mathematics & Comp Science			
Egarievwe, Steve	Assistant Professor	PhD	Physics
Harris, Bobby (CS Coordinator)	Lecturer	MS	Computer Science
Hota, Sanjukta	Associate Professor	PhD	Mathematics
Mann, II, N. Horace	Associate Professor	PhD	Biomedical Engineering
Murray, Leroy	Associate Professor	MA, JD	Mathematics
Papousek, Elizabeth	Associate Professor	PhD	Mathematics
Smith, Ronald	Lecturer	MS	Mathematics
Physics			
Burger, Arnold	Associate Professor, Director of Materials Science Labs)	PhD	Physics
Collins, W. Eugene	Professor	PhD	Physics/Math
Morgan, Steven (Chair)	Professor	PhD	Physics
Mu, Richard	Associate Professor	PhD	Physics
Silberman, Enrique	Professor Emeritus	PhD	Physics
Springer, John (CIO and Dir. of Institutional Research)	Professor	PhD	Physics
Wallace, Bryan Kent	Laboratory Instructor	MS	Physics
Watson, Michael	Assistant Professor	PhD	Physics
Division of Social Science			
Dr. Reavis Mitchell, Director			
History			
Mitchell, Reavis (Chair)	Associate Professor	DA	History
Quirin, James	Professor	PhD	History
Wynn, Linda	Visiting Lecturer	MPA (Public Adm)	History
Political Science			
Adebanjo, Jennifer, Chair	Associate Professor	PhD	Political Science
Nimley, Anthony	Professor	PhD	Political Science
Psychology			
Carson, Richard	Assistant Professor	PhD	Psychology
Cunningham, Rhonda	Visiting Assistant Professor	PhD	Psychology
Peters, Sheila (Chair)	Associate Professor	PhD	Psychology
Stadler, Jonathan	Visiting Professor	PhD	Psychology

Sociology & Anthropology			
Smith, Dani	Assistant Professor	PhD	Sociology
Teacher Education Program			
Richard Bowers	Coordinator, Special Education Program	MS	Special Education
Steele, Earlie	Assistant Professor	EdD	Special Education
Debbie Thomas	Associate Professor	EdD	Education (Curriculum Instruction)

Core Curriculum Instructional Faculty (Full-Time)

Patricia McCarroll, Coordinator

Autry, Philip	Associate Professor	DMA	Music
Collier, Karen	Associate Professor	PhD	Religion
Gunasekaran, Muthukamaran	Professor	PhD	Biology
Ike, Justus	Associate Professor	PhD	Biology
Lambert, E. Jean	Associate Professor	PhD	Communications
Mann, N. Horace	Associate Professor	PhD	Biomedical Engineering
McCarroll, Patricia	Lecturer, Core Coordinator	MS	Biology
Meyer, Adam	Associate Professor	PhD	English
Mitchell, Reavis	Associate Professor	DA	History
Popkin, David	Associate Professor	PhD	English
Quirin, James	Professor	PhD	History
Smith, Ronald	Lecturer	MS	Mathematics
Stofko, Diane	Assistant Professor	PhD	Music
Watson, Michael	Assistant Professor	PhD	Physics
Wynn, Linda	Visiting Lecturer	MPA (Public Admin)	History

Part-Time Instructional Faculty

Table 3.2: Part-Time Instructional Faculty

Division of Business Administration			
McNamee, Dennis	Adjunct Lecturer		
Potts, Felicha	Adjunct Lecturer		
Umontuen, Nicholas	Adjunct Lecturer	MPA	Business Administration
Division of Humanities and Fine Arts			
Baldwin, Lewis	Visiting Professor		of Religious & Phil. Studies
Collins, L.M.	Professor Emeritus	PhD	English
Conkwright, Kathy	Adjunct Lecturer in Communications		Communications
Curry, Jason	Adjunct Lecturer		Religious and Phil. Studies
Davis, Garnett R.	Adjunct Lecturer		Music
Dobbins, Washington	Lecturer	MA	Communications
Duke, Christopher	Lecturer	MA	Music
Grigsby, Paul	Adjunct Lecturer		Art
Guillard, Cecile	Visiting Professor in French	PhD	French
Hardy, William	Adjunct Lecturer		Religious and Phil. Studies
Jones, Theodore	Lecturer	MFA	Art
LeFan, Bart	Adjunct Lecturer		Music
Lorenzo-Garcia, Alicia	Visiting Professor	MA	Spanish
Mitchell, Jacqueline	Adjunct Associate Professor	PhD	Speech Communication
Simmons, Victor	Adjunct Lecturer		Art
Wilkinson, Carlton	Adjunct Lecturer		Art
Anderson, Victor	Visiting Professor	PhD	Religion

Division of Natural Science and Mathematics (Part-Time)			
Cleveland, James	Adjunct Lecturer		Chemistry
Frierson, Eli	Adjunct Lecturer		Mathematics
McShepard, Gerard	Adjunct Lecturer		Biology
Qian, Lei	Adjunct Lecturer	PhD	Computer Science
Shute, Elizabeth	Adjunct Lecturer		Chemistry
Division of Social Science (Part-Time)			
Bellard, Stephanie	Adjunct Lecturer	MA	Psychology
Glover, Larry	Adjunct Lecturer	EdD	Teacher Certification
Karpos, Mary	Visiting Professor **	PhD	Sociology
Kilcrease, Karolyn	Adjunct Lecturer	MEd	Special Education
Murrell, Barbara	Adjunct Lecturer		Teacher Certification
Sawyers, James	Adjunct Lecturer	MEd	Admin /Supervision
Smith, Derek	Adjunct Lecturer	MEd	Instructional Effectiveness
Smith, Tarik A.	Adjunct Lecturer		Social Sciences
Sturnk, Daniel	Visiting Professor**	PhD	Psychology
Terrell, Teresa	Adjunct Lecturer		Sociology
Core Curriculum (Part-Time)			
Tribble, Sherman	Lecturer	PhD	Religious & Theological Studies
Ward, Robert	Lecturer	PhD	Political Science
Thieme, Darius	Professor Emeritus	PhD	Musicology
Crowder, Stephanie	Lecturer	PhD	New Testament

Notes:

* Full-Time Administrator

**Vanderbilt University Exchange Professor

RESEARCH FACULTY AND STAFF

Table 3.3: Research Faculty and Staff

NAME	RANK	HIGHEST DEGREE	RESEARCH AREAS
Caulfield, H. John	Distinguished Research Professor	PhD	Holography and Optical Information
Knudeson, David	Research Scientist	PhD	Physics
Cui, Yunlong	Research Associate	PhD	Semiconductor Crystals and Films
Roy, Utpal	Research Assistant Professor	PhD	Semiconductor Crystals and Films
Ueda, Akira	Research Associate	PhD	Nanophase Materials
Wu, Marvin	Research Assistant Professor	PhD	Nanophase Materials
Zavalin, Andrey	Research Assistant Professor	PhD	Nanophase Materials
Groza, Michael	Research Associate	MS	Photonic Materials & Devices
Guo, Mingsheng (Mike)	Research Associate	PhD	Photonic Materials & Devices

FACULTY STATISTICS

Fall Semesters, 2003 and 2004

Table 3.4: Distribution of Full-Time Teaching Faculty by Division and Discipline

DIVISIONS	2003					2004			
	M	F	TOT	%		M	F	TOT	%
Business Administration	2	1	3	5.9		2	1	3	5.6%
Humanities & Fine Arts	7	12	19	37.3		8	11	19	35.2%
Natural Sciences/ & Math	12	5	17	33.3		15	5	20	37.0%
Social Sciences	6	6	12	23.5		5	7	12	22.2%
TOTALS	7	24	51	100		30	24	54	100%

*Individuals with non-teaching administrative appointments or on leave are not counted, even though they may retain tenured status.

Table 3.4.2: Distribution of Full-Time Faculty by Gender and Academic Discipline

DISCIPLINES	2003					2004		
	M	F	T	M		F	T	
ART	0	2	2		0	2	2	
BIOLOGY	2	3	5		2	2	4	
BUSINESS ADMIN	2	1	3		2	1	3	
CHEMISTRY	2	0	2		3	1	4	
COMPUTER SCIENCE	3	0	3		3	0	3	
DRAMATICS & SPEECH	1	2	3		1	2	3	
ENGLISH	2	2	4		2	1	3	
HISTORY	2	1	3		2	1	3	
MODERN FOREIGN LANG	1	3	4		2	3	5	
MATHEMATICS	2	2	4		2	2	4	
MUSIC	3	2	5		3	2	5	
PHYSICS	3	0	3		5	0	5	
POLITICAL SCIENCE	1	1	2		1	1	2	
PSYCHOLOGY	2	2	4		2	2	4	
RELIGION & PHIL. STUDIES	0	1	1		0	1	1	
SOCIOLOGY	1	1	2		0	1	1	
SPECIAL EDUCATION					0	1	1	
TEACHER CERTIFICATION		1	1		0	1	1	
TOTALS	27	24	51		30	24	54	

Table 3.5: Profile of Highest Earned Degree For Full-Time Teaching Faculty

Fall Semester, 2004

	MASTERS	DOCTORATE	TOTAL
BUA	1	2	3
HFA	7	12	19
NSM	3	17	20
SSC	1	11	12
TOTAL	12	42	54
(%)	(22%)	(78%)	(100%)

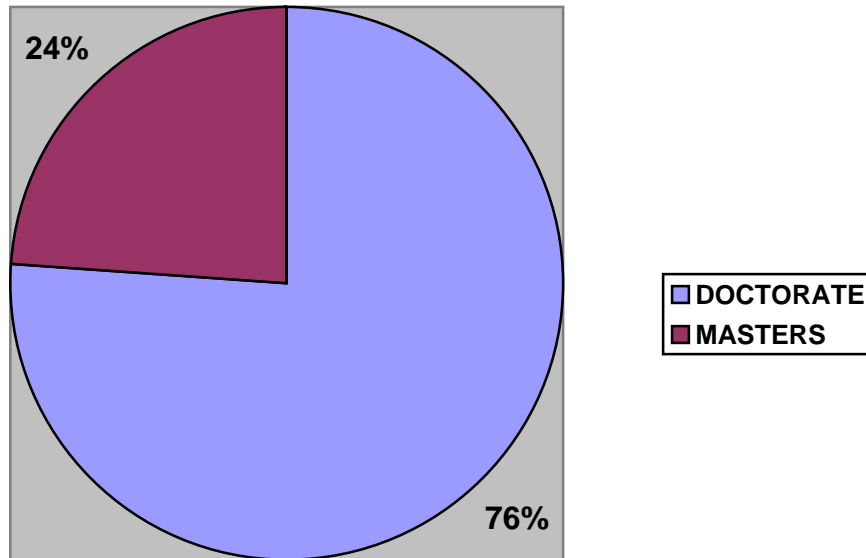


Table 3.6: Distribution of Academic Rank of Full-Time Teaching Faculty by Division

Fall Semester, 2004

	Professor	Associate Professor	Assistant Professor	Instructor	Lecturer / Other	Total
BUA	0	1	2	0	0	3
HFA	0	9	6	0	4	19
NSM	3	13	1	0	3	20
SSC	3	4	4	0	1	12
TOTALS	6	27	13	0	8	54
(%)	(11.1%)	(50.0%)	(24.1%)	(0%)	(14.8%)	(100.0%)

Figure 3.2 Profile of Academic Rank for Full-Time Faculty

Fall Semester, 2004

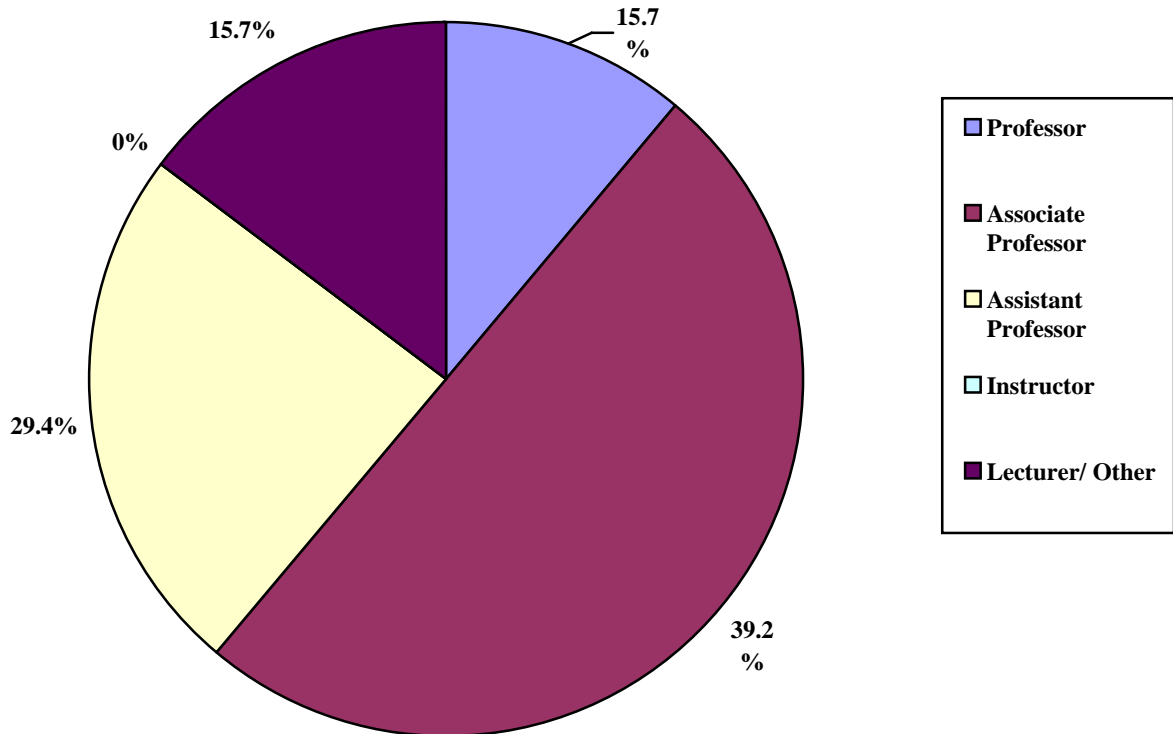


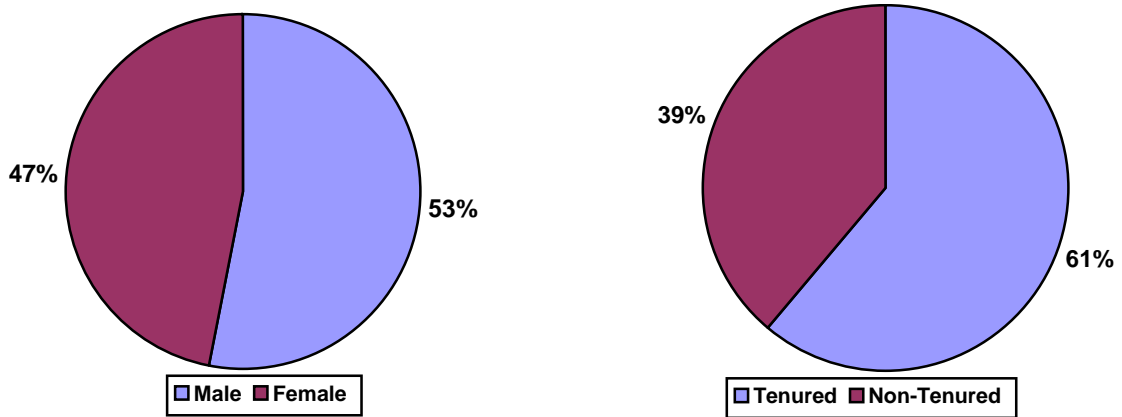
Table 3.7 Distribution of Gender and Tenure for Full-Time Faculty by Division

Fall Semester, 2003

	MALE		FEMALE		TOTALS	
	T	NT	T	NT	T	NT
BUA	1	1	1	0	2	1
HFA	4	3	5	7	9	10
NSM	8	4	4	1	12	5
SSC	4	2	4	2	8	4
SUBTOTALS	17	10	14	10	31	20
					(61%)	(39%)
TOTALS	27		24		51	
(%)	(53%)		(47%)		(100.0%)	

Figure 3.3: Profile of Gender and Tenure for Full-Time Faculty

Fall Semester, 2003

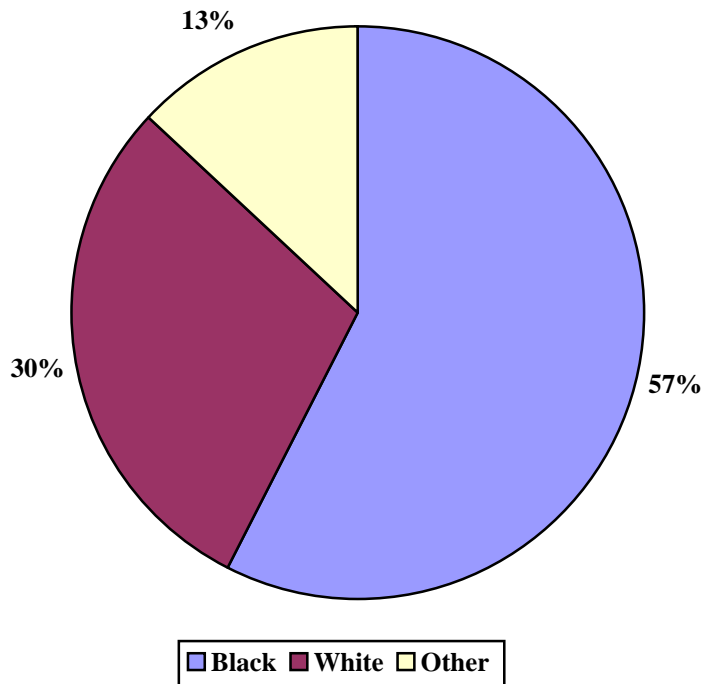


**Table 3.8: Distribution of Race for Full-Time Faculty by Division
Fall Semester, 2003**

	BLACK	WHITE	OTHER	TOTAL
BUA	2	0	1	3
HFA	11	8	0	19
NSM	10	5	5	20
SSC	8	3	1	12
TOTALS	31	16	7	54
	(57.4%)	(29.6%)	(13.0%)	(100%)

Figure 3.4 Profile of Race for Full-Time Faculty

Fall Semester, 2004



**Table 3.9: Distribution of Full-Time Faculty by Rank, Race and Gender
Fall Semesters, 2003 and 2004**

MALE

	2003				2004			
	B	W	O	TOTAL	B	W	O	TOTAL
PROFESSOR.	2	3	1	6	2	3	1	6
ASSOCIATE PROFESSOR	6	3	2	11	8	5	3	16
ASSISTANT PROFESSOR.	6	1	0	7	4	1	0	5
INSTRUCTOR	-	-	-	0	0	0	0	0
LECTURER	2	1	0	3	3	1	0	4
OTHER	0	0	0	0	0	0	0	0
TOTAL	16	8	3	27	16	8	3	3

FEMALE

	2003				2004			
	B	W	O	TOTAL	B	W	O	TOTAL
PROFESSOR	1	1	-	2	0	0	0	0
ASSOCIATE PROFESSOR	8	1	-	9	9	1	1	11
ASSISTANT PROFESSOR	3	4	1	8	4	4	0	8
INSTRUCTOR	-	-	-	0	0	0	0	0
LECTURER	4	1	-	5	3	1	0	4
OTHER	0	-	-	0	0	0	0	0
TOTAL	16	7	1	24	16	6	1	23

Table 3.11: Distribution of Full-Time Faculty by Highest Degree Earned, Race and Gender

Fall Semesters, 2003 and 2004

	MALE							
	2003				2004			
	Black	White	Other	TOTAL	Black	White	Other	TOTAL
DOCTORATE	12	7	3	22	12	9	4	25
MASTERS	3	1	0	4	4	1	0	5
TOTAL	15	8	3	26	16	10	4	30

	FEMALE							
	2003				2004			
	Black	White	Other	TOTAL	Black	White	Other	TOTAL
DOCTORATE	11	3	1	15	10	4	1	15
MASTERS	7	2	1	10	7	2	0	9
TOTAL	18	5	2	25	17	6	1	24

SOURCE: Academic Affairs, Human Resources

Table 3.13: Instructional and Non-Instructional Full-Time and Part-Time Faculty: Fall Semester, 2004

Division/Program	FT Faculty	PT Faculty ¹	FT (FTE)	PT (FTE) ²	TOTAL FTE
BUA	3	3 (17 hrs)	3	1.4	4.4
HFA	19	16 (69 hrs)	19	5.8	24.8
NSM	20	5 (21hrs)	20	1.8	21.8
SSC	12	10 (65 hrs)	12	5.4	17.4
CORE³	0	7(48 hrs)	0	4	4.0
HONORS³	0	1(4 hrs)	0	.33	.33
TOTAL	54	42 (160 hrs)	54	20.73	72.73

¹This column gives both the part-time faculty headcount and the number of credit hours taught by part-timers in the academic area

²Part-time FTEs are calculated by dividing the number of credit hours taught by part-time faculty by 12, which is a full-time teaching load.

³Since full-time faculty instructors are associated with a Division, not Core or Honors, it somewhat misleadingly appears that for these latter programs there are no faculty who are employed full-time. In actuality fifteen full-time faculty teach one or more Core courses. Two full-time faculty and one part-time instructor taught Honors courses

Source: Academic Affairs and Banner Data

GENERAL INFORMATION

QUICK FACTS

- Tuition and Fees, Fall Semester, 2004:

Tuition	\$5,885
Activity Fee	\$180
Technology Fee	\$160

- Estimated Academic Year Cost for on-campus student, 2003-04:

Tuition and Fees	\$11,535
Room and Board	\$5,770
Books and Supplies	\$1,000
Transportation	\$1,450
Personal Expenses	\$2,050
TOTAL	\$21,805

TUITION AND FEES

Table 4.1 Tuition and Student Activity Fee

1994-95 through 2003-04

	Student Activity Fee	Technology Fee	Tuition	Tuition And Fees
2004-05	\$360	\$320	\$11,770	\$12,450
2003-04	335	300	10,900	11,535
2002-03	310	-	10,090	10,400
2001-02	300	-	9,489	9,789
2000-01	300	-	8,740	9,040
1999-00	290	-	8,480	8,770
1998-99	270	-	8,000	8,270
1997-98	250	-	7,500	7,750
1996-97	250	-	7,078	7,328
1995-96	250	-	6,490	6,740

Figure 4.1 Tuition and Student Fees: 1994-95 through 2003-04

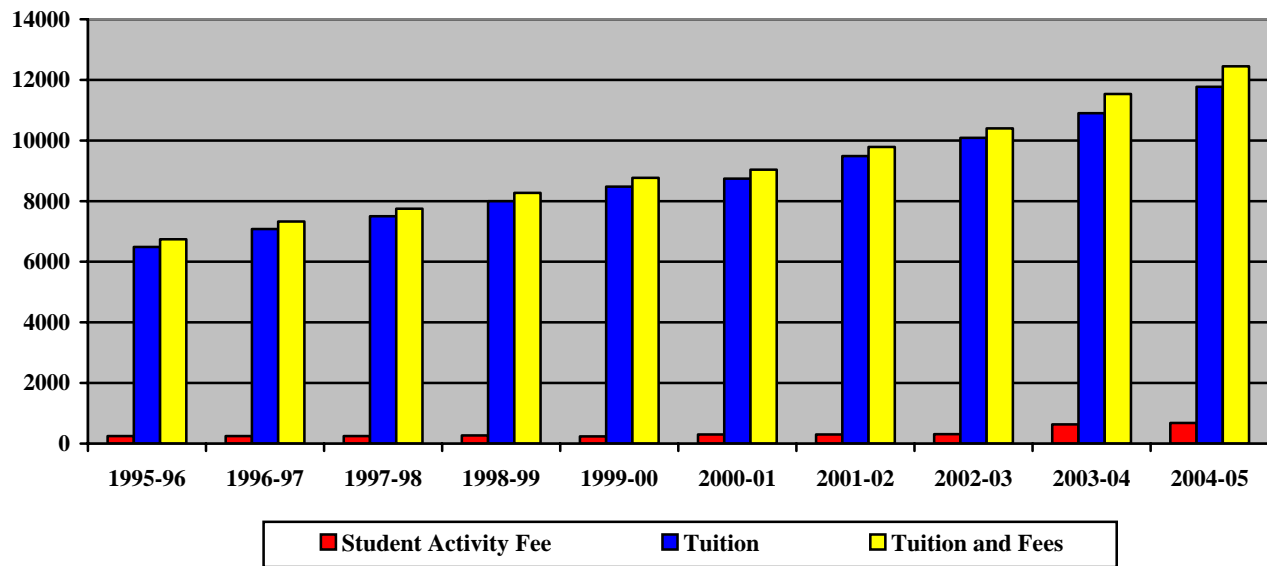


Table 4.2 Estimated Academic Year Cost for Resident Undergraduate Student

1999-2000 to 2003-04

	2000-01	2001-02	2002-03	2003-04	2004-05
Tuition & Fees	\$ 9,040	\$9,789	\$10,400	\$11,535	\$11,770
Room and Board	5,030	5,182	5,340	\$5,770	\$6,230
Books and Supplies	1,000	1,000	1,000	\$1,000	\$1,000
Transportation	1,700	1,700	1,450	\$1,450	\$1,000
Personal Expenses	1,800	1,800	1,800	\$2,050	\$1,500
Total Estimated Cost	\$18,570	\$19,471	\$19,990	\$21,805	\$21,980

NOTE: The estimated academic year cost is used to determine a student's financial aid need

Figure 4.2 Tuition and Student Fees: 2000-2001 to 2004-05

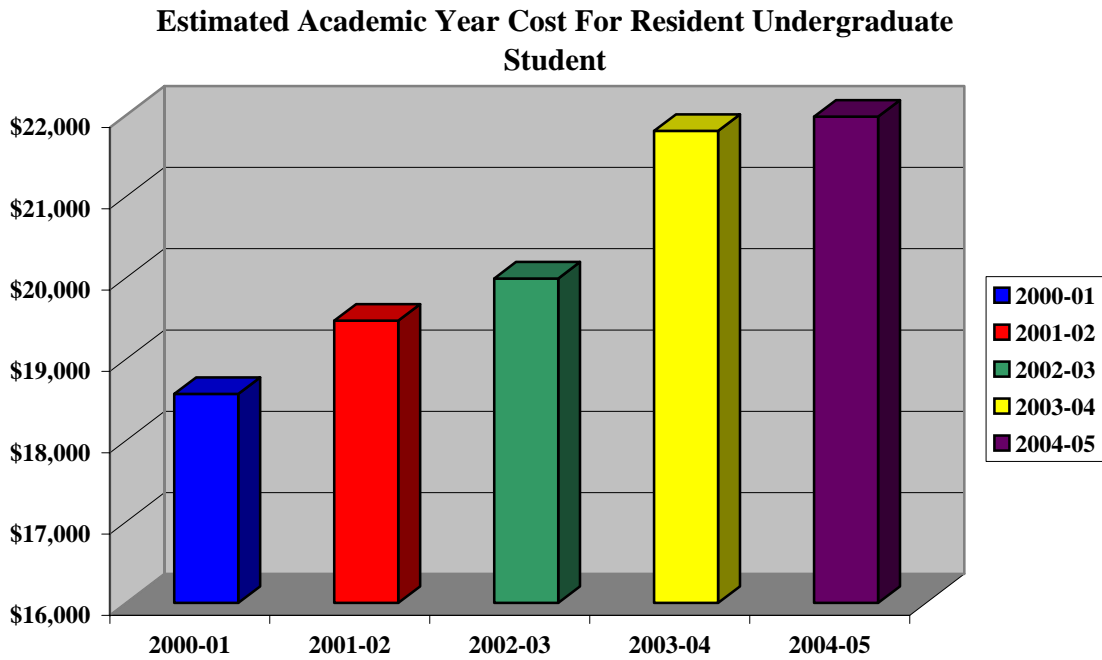
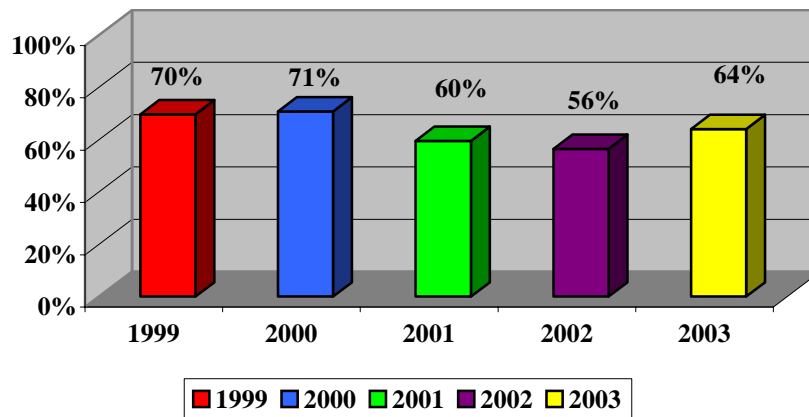


Table 4.3 Capacity and Occupancy: 1999-2003

	Crosthwaite	Jubilee	Livingstone	Shane	Total
Capacity	206	146	220	324	896
2000	158	119	155	172	604
(% Capacity)	(76.7%)	(81.5%)	(81.6%)	(55.1%)	(70.7%)
Capacity	0	146	220	324	896
Fall 2001	NA	124	163	246	533
(% Capacity)	NA	84.9%	74.1%	75.9%	59.5%
Capacity	206	146	220	324	896
Fall 2002 Occupancy	90	131	137	147	505
(% Capacity)	(43.7%)	(89.7%)	(62.3%)	(45.4%)	(56.4%)
Capacity	206	146	220	324	896
Fall 2003 Occupancy	140	138	112	187	577
(% Capacity)	(68%)	(93%)	(51%)	(58%)	(64.4%)
Capacity	206	146	220	324	896
Fall 2004 Occupancy					
(% Capacity)	(68%)	(93%)	(51%)	(58%)	(64.4%)

Figure 4.2 Student Housing Occupancy



FACILITIES

Table 4.4 University Buildings by Square Footage

Building Name	Gross Square Footage	Year Constructed	Year of Last Major Renovation
Adult Student Complex	5,800	1992	-
Basic College	7,925	1955	
Biology Research Lab	1,600	1993	
Boyd House	2,762	1921	1996
Burrus Hall	6,620	1935	
Carnegie	11,994	1907	1994
Cravath	24,520	1929	2002
Crosthwaite Residence Hall	47,086	1962	2002
DuBois	33,189	1959	
Faculty Apartments	41,784	1969	
Harris House	2,868	1876	
Honors Program Building	3,376	1992	-
Johnson Gymnasium	27,552	1946	-
Jubilee Residence Hall	55,392	1873	
Library and Learning Center	74,610	1969	-
Little Theatre	2,685	1888	
New Livingstone Residence hall	52,217	1962	-
Memorial Chapel	10,008	1892	1992
Park-Johnson	32,595	1953	2001
President's Residence	4,510	1969	-
Race Relations Institute	2,500	1945	-
Richardson Alumni House	1,690	1905	
Science Lab Building	3,600	1973	-
Shane Residence Hall	86,680	1973	
Adams K. Spence	31,238	1953	
Talley-Brady Chemistry Building	30,021	1931	1991
Van Vechten Gallery	7,460	1881	

Table 4.5 Fraternities and Sororities: 2003-04

Social Organization	Year Established On Campus
Fraternities	
OMEGA PSI PHI, Eta Psi Chapter	1926
ALPHA PHI ALPH, Alpha Chi Chapter	1927
KAPPA ALPHA PSI, Alpha Delta Chapter	1927
PHI BETA SIGMA, Alpha Gamma Chapter	1927
Sororities	
DELTA SIGMA THETA, Alpha Beta Chapter	1926
ALPHA KAPPA ALPHA, Pi Chapter	1927
SIGMA GAMMA RHO, Alpha Upsilon Chapter	1945
ZETA PHI BETA, Kappa Gamma Chapter	1966

Table 4.6 Student Organizations

Organization	Purpose
<u>Student Governing Organizations</u>	
Pan Hellenic Council	Governing body of Greek organizations
Residence Hall Councils	Represents residents of and organizes residence halls
Student Government Association	Provides for student involvement in the institution
<u>Production Organizations</u>	
Fisk Forum	Student-run newspaper
Fisk Herald	Student publication of poetry and prose
Fisk Sinfonias	Men's Choral Group
Jazz Ensemble	Performance jazz group
Jubilee Singers	Fisk's premier performance group
Modern Black Mass Choir	Perform gospel works
Orchesis	Performing Dance Group
Oval	Student Year Book
Pep Squad	Promotes school spirit
Stagecrafters	Dramatic Performances
University Choir	Official Chapel Choir
University Song Leaders	Performs dance routines primarily at half-time
WFSK Radio	Fisk University Operated
Fisk Television	Fisk University Operated
<u>Honor Societies</u>	
BETA KAPPA CHI	Recognizes Achievement and excellence in all sciences
MORTAR BOARD	Recognizes Support scholarship in all fields of study
PHI BETA KAPPA	Recognizes undergraduate achievement in liberal arts
SIGMA XI	Recognizes achievement in scientific research

Table 4.6 Student Organizations – Continued

Organization	Organization	
<u>Departmental Honoraries</u>		
ALPHA GAMMA MU	Foreign Languages	
ALPHA KAPPA DELTA	Sociology	
DELTA MU DELTA	Business	
LAMDA IOTA TAU	Literature	
PSI CHI	Psychology	
Pi Sigma Alpha	Political Science	
W.E.B. DuBois Honors Program	University Honors Program	
<u>Departmental and Professional Societies</u>		
Association of Computing Machinery Club	Promotes and increases knowledge and applications of modern computing machinery	
Business Club	Promotes Application of business practices	
Pre-Health Careers Club	Promotes student interests in pursuing health careers	
Psychology Club	Opportunities and responsibilities in chemistry	
Spanish Club	Promotes interaction between students and faculty in psychology	
Tanner Art Society	Promotes interest in the language and culture of Spain	
Teacher Education Club	Fosters support and interest in the arts	
French Club	Promotes interest in careers in teaching	
Investment Club	Promotes interest in the language and culture of France	
Political Science Club		
Sociology Club		
Political Science Club	Promotes interaction between students and faculty in sociology	
Society of Physics Students	Promotes interaction between students and faculty in political science	
Alpha Phi Omega	Promotes interaction between students and faculty in physics	
Phi Mu Alpha, Zeta Rho Chapter (Sinfonic Club)	National Service Organization	
National Organization for the Professional Advancement of Black Chemists and Chemical Engineers	Professional Music Fraternity for Men	
Society of Physics Students	Promotes interest in chemistry and related fields	
Alpha Phi Omega		
National Service Organization		
<u>Geographical Clubs and Organizations</u>		
Alabama Club	Georgia Club	Ohio Club
Arkansas Club	Kansas Club	Oklahoma Club
California Club	Michigan Club	Oregon Club
Chicago Club	Missouri Club	Tennessee Club
DC/MD/VA Club	NY/NJ Club	Tri-State Area
<u>Religious and Spiritual Organizations</u>		
Baptist Student Union	Royal Life Ministry	
Chapel Assistants	Wesley Foundation	
IMANI Praise Team (Religious Interpretive Dance Group)	Y.E.S. Ministries (Young Excited and Saved)	
Interfaith Ministry		
LYLAS (Love You Like A Sister)		
Mt. Zion Tutorial		
Muslim Students Association		
Nation of Islam Students		
Pentecostal Tabernacle Club		

Political, Sports and Social Organizations

Big Sister Mentoring and Etiquette
Honda Campus All-Star Challenge
Cheerleaders
NAACP

National Black Women's Health
Pep Squad
R.E.A.D. Club
Rage Dance Team
Recycle Club

Song Leaders
Student of the Circle
of Association of Black Psychology

Cultural Organizations

African Student Association
Caribbean Student Union

International Student Association

Other

FUSA (Fisk University Student Ambassadors)
Pre-Alumni Club
I Have A Future
Investment Club
Students In Free Enterprise (SIFE)

Admissions support group. Provides official University tours.
Alumni-In-Training program
Mentoring Program
Promotes interest in finance
Promotes interest in free enterprise

The Office of Institutional Advancement is responsible for generating gifts from the private sector to increase contributions and constituent support to accomplish the mission and goals of the University. This Office also serves as the liaison for all fundraising initiatives including the General Alumni Association.

Sources of Support

Table 4.7 Sources of Major Institutional Support – Fiscal Years 1999-2003

Source	1999	2000	2001	2002	2003
Alumni	850,168	807,771	1,231,605	877,299	794,899
Non-Alumni	277,162	120,556	459,909	4,232,950	321,935
Corporations	357,714	2,290,971	428,912	489,561	501,329
Foundations	1,381,030	989,986	657,451	178,212	536,065
Other	1,096,704	996,824	792,333	1,069,266	736,772
TOTAL	3,962,778	5,206,108	3,570,210	6,847,288	2,891,000

Figure 4.7 Private Gifts and Grants – Fiscal Years 1999-2003

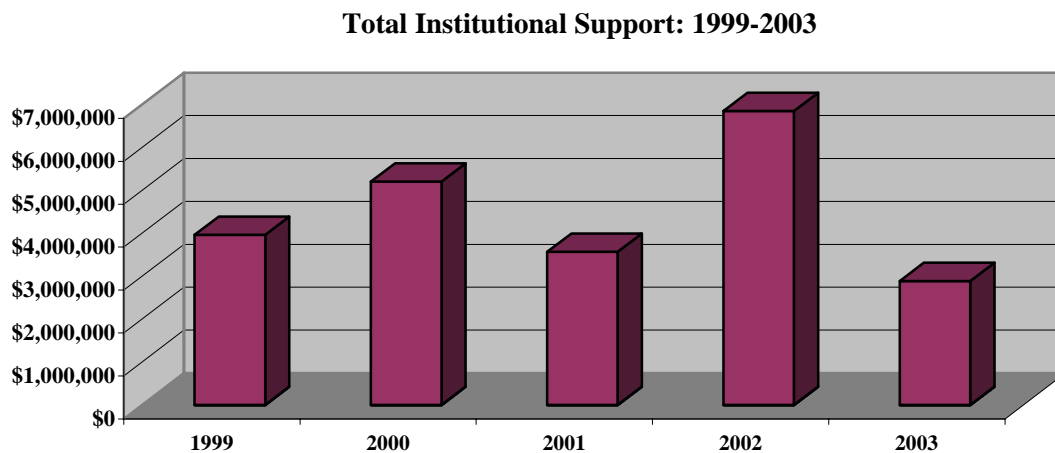


Table 4.8 Geographical Distribution of Alumni – as of December 2004 (Good Addresses)

STATE		STATE		STATE	
Alabama	224	Maine	5	Oregon	19
Alaska	3	Maryland	352	Pennsylvania	158
Arizona	31	Massachusetts	78	Rhode Island	2
Arkansas	49				
California	535	Michigan	308	South Carolina	102
Colorado	27	Minnesota	30	Tennessee	1261
Connecticut	55	Mississippi	81	Texas	409
Delaware	29	Missouri	159	Utah	0
District of Columbia	164	Montana	1	Vermont	0
Florida	293	Nebraska	7	Virginia	199
Georgia	593	Nevada	26	Washington	29
Hawaii	8	New Hampshire	4	West Virginia	3
Idaho	1	New Jersey	166	Wisconsin	47
Illinois	487	New Mexico	10	Wyoming	1
Indiana	157	New York	327		
Iowa	3	North Carolina	166		
Kansas	23	North Dakota	0	Puerto Rico	0
Kentucky	96	Ohio	387	Virgin Island	20
Louisiana	101	Oklahoma	48		
				TOTAL	6957

Table 4.9 Foreign Country Residence of Alumni, as of December 2004 (Good Addresses)

COUNTRY	NUMBER
APO	2
Bahamas	27
Bermuda	0
British West Indies	1
Canada	2
China	2
England	1
Germany	2
Jamaica	1
Mexico	0
Nigeria	2
South Africa	1
Sweden	0
West Indies	3
Zimbabwe	2
	TOTAL
	46

Table 4.10 Alumni Clubs, as of December 2004

LOCATION	STATE	CLUB PRESIDENT/CONTACT
Atlanta	GA	Linda L. Smith '81
Austin	TX	Trent Spears '02
Nassau	Bahamas	Judson F. Eneas, MD '67
Baltimore	MD	Peter Buchanan '54
Birmingham	AL	Newstell Dowdell '53
Chicago	IL	Andrew L. Brown '85
Cincinnati	OH	Anna E. Hutchinson '96
Cleveland	OH	Robert Wiley '76
Miami Valley of Ohio	OH	Monica Rhea '79
Detroit	MI	Maurice Shane '67
Gary/NW Indiana	IN	Chester Bell '52
Hampton Roads Club	VA	George Tillerson, III '67
Houston	TX	Dr. Harold B. Crawford '65
Indianapolis	IN	Raymond O. Pierce '51
Los Angeles	CA	Elroy Bond '57
Memphis	TN	Pamela Strickland Quarles '86
Miami	FL	Brenda Benedict Lee '68
Milwaukee	WI	Helen Kelley '52
Nashville	TN	Faye Weaver '67
New Orleans	LA	Karl Turner '77 & Vermuta Dickson Moore '47
New York/New Jersey	NY/NJ	Deborah Perry '81
Oakland/San Francisco Area	CA	Alphonso Campbell '54
Philadelphia	PA	Vivian Gonzalez '69
Twin Cities	MN	James Montague, Jr. '84
Washington DC	MD	Gloria Elliott '72
Executive Director (Acting)		Adrienne T. Latham '68

Table 4.13 General Alumni Association of Fisk University – Board of Trustees 2004-05

OFFICERS	BOARD
Chairman Will J. Carter '57	Denise C. Bridgeford-Lightner, MD '86 Andrew L. Brown Jr. '85 Linda Brown Coleman, Ph.D. '70
Vice Chair Carita Harrison Reaves '68	Tena Walton Gardner '65 Vivian Gonzalez '69 P. Gregory Johnson '70
Treasurer Elna Green Benefee '63	Grace Kelly-Driver '55 Sandra Lawson, Ph.D. '67 Sharon Wilson Murphy '72
General Counsel Denise Billye Sanders, JD '74	Deborah Perry '81 Donna Daniels Rice '64 Linda L. Smith '81
Secretary Janis Edwards Marley '68	William E. Settle '77 Samuel L. Williams, Jr. '68 Stephanie V. Williams '72
Parliamentarian Andrew L. Brown, Jr. '85	

FINANCES

FINANCIAL PROFILE

- Total current fund revenues for FY 2003 were approximately \$22.5 million, down 12% from 2002.
- Government grants and contracts for FY 2003 were up 23% from FY 2001 and private gifts and grants were down 51% for the same period. In FY 2003, net tuition and fees was \$6.3 million, compared with \$6.1 in FY 2001.
- Education and general (E & G) revenues per student were \$22,791 for FY 2003, down \$5,600 from FY 2002 level.
- Tuition and Fees (32%) and private gifts and grants (30%) combine for about two-thirds (62%) of all revenues for 2003.
- Total current fund expenditures were \$21.1 million for FY 2003, down 8% from FY 2002.
- Academically related expenditures for 2003 totaled 62% of E & G expenditures: cost of instruction, 39%; research, 14%; and academic support, 9%. The five-year average for research is 19% of E & G expenditures.
- Net auxiliary enterprise revenue for FY 2003 was \$110,115

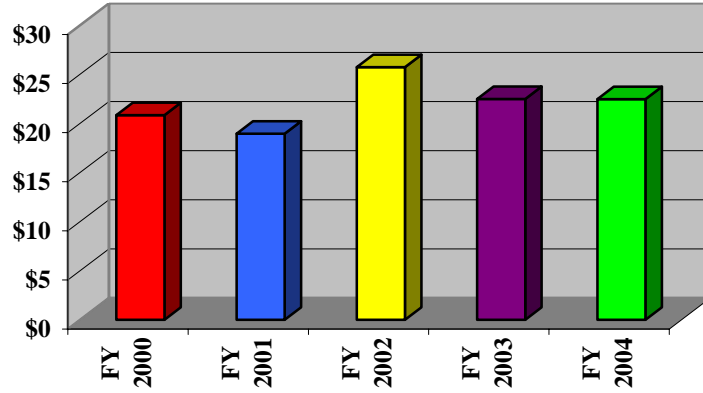
2004 Annual Fact Book

**CURRENT FUND REVENUES, EXPENDITURES AND
BALANCES**

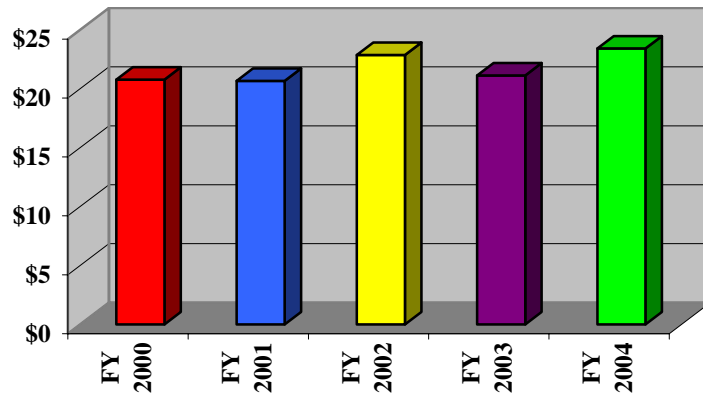
FY 2000 through FY 2004

Figure 5.1 Current Fund Revenues, Expenditures and Balances

TOTAL CURRENT FUND REVENUES



TOTAL CURRENT FUND EXPENDITURES



TOTAL CURRENT FUND BALANCE

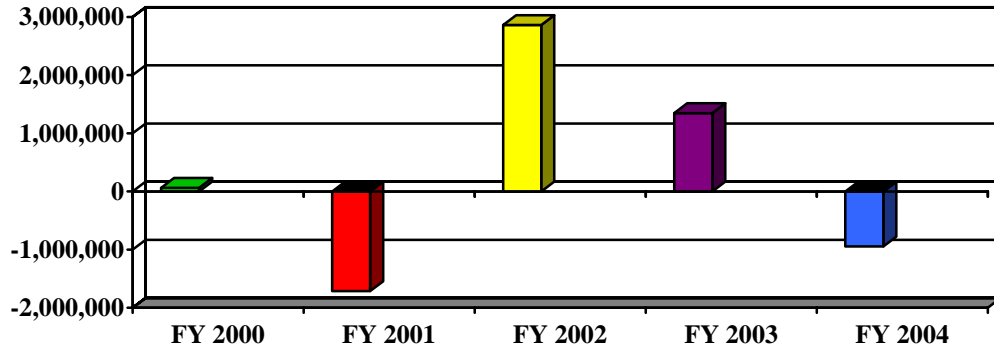


Table 5.1 Current Fund Revenues, Expenditures and Balances

	FY 2000	FY 2001	FY 2002	FY 2003	FY 2004
TOTAL CURRENT FUND REVENUES	\$20,826,572	\$18,941,372	\$25,717,380	\$22,472,189	\$22,462,503
TOTAL CURRENT FUND EXPENDITURES	\$20,764,583	\$20,654,495	\$22,855,248	\$21,124,685	\$23,408,657
CURRENT FUND BALANCE	\$61,989	(\$1,713,123)	\$2,862,132	\$1,347,504	(\$946,154)

SOURCE: Financial Affairs

CURRENT FUND REVENUES

FY 2000 through FY 2004

Figure 5.2 Current Fund Revenues, Five-Year Average: FY 2000-FY 2004

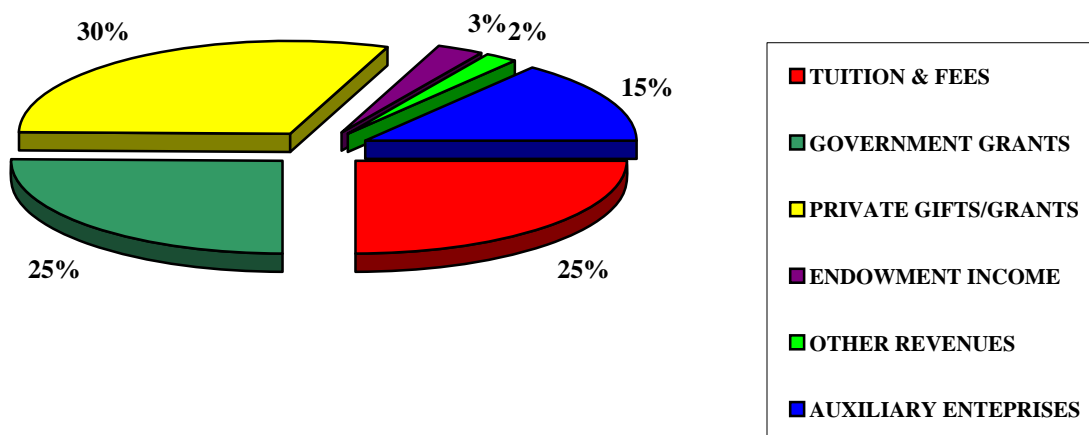


Table 5.2 Current Fund Revenues

	FY 2000	FY 2001	FY 2002	FY 2003	FY 2004
TUITION & FEES	\$4,487,465	\$3,877,536	\$6,083,519	\$6,299,054	\$6,935,345
GOVERNMENT GRANTS	6,234,026	5,690,938	4,486,459	5,535,492	5,831,815
PRIVATE GIFTS/GRANTS	4,760,400	6,412,283	11,962,184	5,830,833	4,750,259
ENDOWMENT INCOME	1,636,099	(1,057,058)	41,034	1,387,208	994,122
OTHER REVENUES	504,175	688,270	309,678	387,983	300,217
TOTAL EDUCATION & GENERAL REVENUES	17,622,165	\$15,611,969	\$22,882,874	19,440,570	18,811,758
AUXILIARY ENTERPRISES	3,204,407	3,329,403	2,834,506	3,031,619	3,650,745
TOTAL CURRENT FUND REVENUES	\$20,826,572	\$18,941,372	\$25,717,380	\$22,472,189	\$22,462,503

SOURCE: Financial Affairs

EDUCATION AND GENERAL REVENUES

FY 2000 through FY 2004

Figure 5.3 Education and General Revenues, Five-Year Average: FY 2000-FY 2004

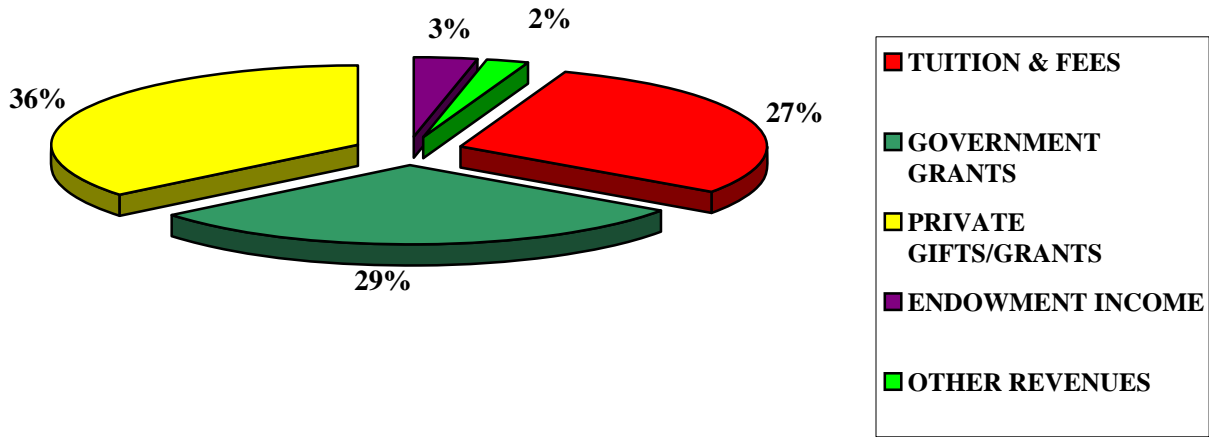


Table 5.3 Percent Distribution Of Total Educational And General Revenues:

	FY 2000	FY 2001	FY 2002	FY 2003	FY 2004
TUITION & FEES	25%	25%	20%	32%	36.9%
GOVERNMENT GRANTS	36%	36%	27%	28%	31.0%
PRIVATE GIFTS/GRANTS	27%	41%	52%	30%	25.3%
ENDOWMENT INCOME	9%	-7%	.2	7%	5.3%
OTHER REVENUES	3%	5%	1%	3%	1.5%
TOTAL EDUCATION & GENERAL REVENUES	\$17,622,165	\$15,611,969	\$22,882,874	19,440,570	18,811,758
FULL YEAR FTE ENROLLMENT	909	861	806	853	
E&G REVENUES PER STUDENT	\$22,912	\$18,132	\$28.391	22,791	

SOURCE: Financial Affairs

CURRENT FUND EXPENDITURES

FY 2000 through FY 2004

Figure 5.4 Current Fund Expenditures, Five-Year Average: FY 2000 - FY 2004

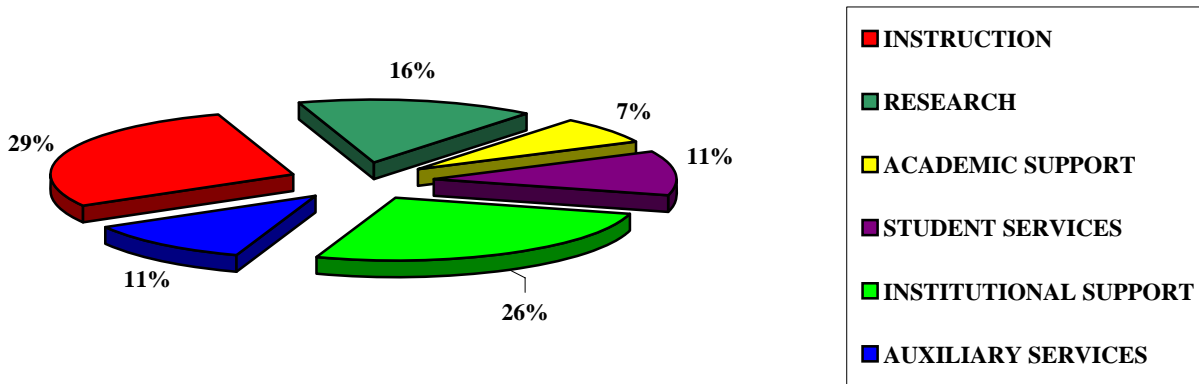


Table 5.4 Current Fund Expenditures

	FY 2000	FY 2001	FY 2002	FY 2003	FY 2004
INSTRUCTION	\$5,817,375	\$5,953,740	\$6,226,239	\$7,139,481	\$5,536,460
RESEARCH	4,533,312	3,708,986	3,401,923	2,516,881	3,291,193
ACADEMIC SUPPORT	1,164,918	1,096,190	1,149,324	1,598,815	2,475,797
STUDENT SERVICES	2,172,256	2,131,265	2,540,941	2,550,763	2,972,681
INSTITUTIONAL SUPPORT	4,705,573	5,447,269	6,506,671	4,397,241	7,497,297
SCHOLARSHIPS/FELLOWSHIPS	-	-	-	-	-
TOTAL E & G EXPENDITURES	18,393,434	18,337,450	19,825,098	18,203,181	19,306,518
AUXILIARY SERVICES	2,371,150	2,317,046	3,030,150	2,921,504	1,635,229
TOTAL CURRENT FUND EXPENDITURES	\$20,764,584	\$20,654,496	\$22,855,248	\$21,124,685	\$23,408,657

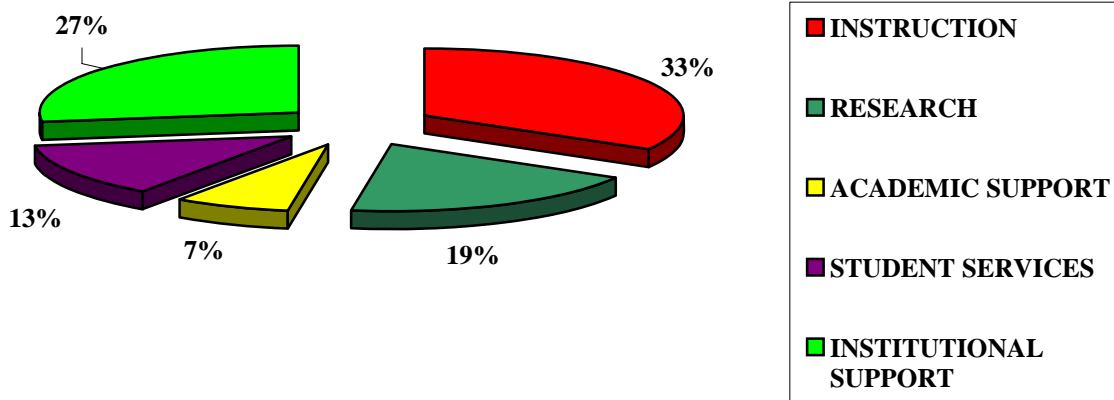
SOURCE: Financial Affairs

PERCENT DISTRIBUTION OF EDUCATION AND GENERAL EXPENDITURES

FY 1999 through FY 2003

Figure 5.5 Percent Distribution of Education and General Expenditures

Five-Year Average: FY 1999 - FY 2003



*Expenditures are averaged over the period in which the University has used the new FASB standard 117 in preparing financial statement.

Table 5.5 Percent Distribution Of Total Education And General Expenditures

	FY 2000	FY 2001	FY 2002	FY 2003	FY 2004
INSTRUCTION	32%	32%	31%	39%	
RESEARCH	24%	20%	17%	14%	
ACADEMIC SUPPORT	6%	6%	6%	9%	
STUDENT SERVICES	12%	12%	13%	14%	
INSTITUTIONAL SUPPORT	26%	30%	33%	24%	
SCHOLARSHIPS/FELLOWSHIPS	-	-	-		
TOTAL E & G EXPENDITURES + MT	18,393,433	18,337,450	19,825,098	18,203,181	

SOURCE: Financial Affairs

**STATEMENTS OF CURRENT FUNDS, REVENUES,
EXPENDITURES, AND OTHER CHANGES**

Year Ended June 30, 2004
(With Comparative Totals For 2003)

Table 5.6 Statements of Current Funds, Revenues, Expenditures, and Other Changes

REVENUES:		2003	2004
	TUITION AND FEES***	6,299,054	
	PRIVATE GIFTS AND GRANTS	5,830,833	
	GOVERNMENT GRANTS/CONTRACTS	5,535,492	
	INVESTMENT INCOME	1,387,208	
	SALES/AUXILIARY ENTERPRISES	3,031,619	
	OTHER INCOME	387,983	
	TOTAL REVENUES	\$22,472,189	

EXPENSES:		2003	2004
	INSTRUCTION	7,139,481	
	RESEARCH	2,516,881	
	ACADEMIC SUPPORT	1,598,815	
	STUDENT SERVICES	2,550,763	
	INSTITUTIONAL SUPPORT	4,397,241	
	EXPENSES/AUXILIARY ENTERPRISES	2,921,504	
	TOTAL EXPENSES	21,124,685	
	CHANGE IN ASSETS	1,347,504	

SOURCE: FY 2003 and FY 2004 Audit Reports

*** Tuition and fees do not include scholarships and fellowships, which were \$2,573,203 for 2003 and \$ for 2004